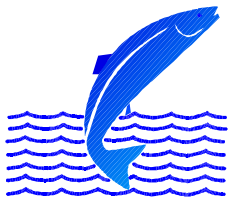


**Icelandic Salmon, Trout and Charr
Catch Statistics 2003**

Guðni Guðbergsson

June 2004

VMST-R/0415



VEIÐIMÁLASTOFNUN
Institute of Freshwater Fisheries

Vagnhöfði 7, 110 Reykjavík. Phone: + 354 5676400; Fax: + 354 5676420

www.veidimal.is

guдни.gudbergsson@veidimal.is

CONTENTS

INTRODUCTION.....	1
METHODS.....	2
RESULTS.....	3
The 2003 fishery.....	3
Age composition of the salmon catch.....	4
DISCUSSION.....	5
REFERENCES.....	7
FIGURES	8-11
TABLES.....	12-25

INTRODUCTION

There are five fish species in freshwater in Iceland. These are the salmonid species, Atlantic salmon (*Salmo salar*), brown trout (*Salmo trutta*) and arctic charr (*Salvelinus alpinus*). The other two are, European eel (*Anquilla anquilla*) and three-spined sticklebacks (*Gasterosteus aculeatus*). Of these species salmon has the highest economic value.

The fishing season in Icelandic rivers is 3 1/2 months during the period from 20th of May to 30th of September. The daily fishing period is 12 hours, between sunset to dawn, and fishing is always closed between 3 AM to 7 AM. In most Icelandic rivers rod and line is the only fishing gear allowed. Only a fixed number of rods are used in each river as decided by the Directorate of Freshwater Fisheries. In the early 1970s when the number of rods allowed in each river was decided a rule of thumb of 1fish/day/rod, on the average was applied. The fishing effort has remained almost unchanged for the past 30 years.

Net fishery is almost exclusively in the largest glacial rivers. In the net fishery gillnets are the most common fishing method and draftnet are used on few places. The weekly net fishing period is from Tuesday morning at 10 AM to Friday evening at 10 PM. The weekend closure is to allow fish migration to the up rivers regions.

There has been a general ban on ocean salmon fishing in Icelandic waters since 1932. An exception to that were 5 localities in the western part of Iceland (Vesturland) (Figure 1). At these localities coastal gillnets were used. These fishing rights were permanently bought out in 1998 by fishery associations in nearby rivers and with governmental support. This was possible since salmon caught by anglers are of much higher value than salmon caught in the net fishery. All salmon harvested in Iceland is in fresh water and mostly based on single stock fishery.

The fishing rights go with the ownership of the land adjacent to the rivers. The landowners are usually farmers. All the landowners of the fishing rights in a river system have by law to form a fishery association, which manages the exploitation of the fish stocks, within the frame set by the law. Usually the fishery association rents or leases the fishing rights to angling clubs or directly to anglers. The entire riverbank is accessible to the limited number of rods allowed. Most rivers have fishing lodges with high quality accommodation.

The catch is recorded in special logbooks in the fishing lodges. The logbook recordings were established in 1946. At the end of each fishing season the logbooks from every river are gathered and statistical information are processed by the Institute of Freshwater Fisheries. The information processed are sent back to the fisheries associations as well as new logbooks before the next fishing season.

Statistics from Icelandic rivers for the 2003 fishing season have now been processed and the main results are in this report. This work is based on Gudbergsson (2004), Lax- og silungsveiðin 2003, a report from the Institute of Freshwater Fisheries (in Icelandic). Statistics have been compiled this way since 1974.

METHODS

Iceland is divided into statistical regions regarding salmon catches (Figure 1) Information on the catch in each region is summarized in tables. The results from all regions are then combined for the whole country. The catch statistics for each river is summarized by the fishing gear used. The harvesting methods used are rod and line, gillnets or draftnets. Ocean ranching harvest have also been summarised. However, there has not been any release of smolts for commercial ocean ranching of salmon since 1998.

By tradition the weight of freshwater fish in Iceland was measured in pounds where 1 pound = 500 g. Before the 1999 fishing season this was changed to kg and the accuracy of 0,1 kg was anticipated. Fish length is measured to the nearest cm. For each fish, date of catch, pool name and number and name of the fisherman is recorded in the logbook. Fishing pools are commonly numbered in the logbooks for ease of computer processing.

The salmon catch can be divided by weight into grilse (1SW, one sea winter) and salmon (2SW, two sea winter). Males up to 4 kg and females up to 3.5 kg are grilse and larger fish are salmon. This deviation in to sea age has been confirmed with aging by scales. Salmon older than 2 winters at sea are rare in Iceland and repeated spawning has been in low percentages in later years.

Brown trout and arctic charr are caught in many rivers as a by-catch with the salmon. In other rivers these are the most dominant species. In some rivers brown trout and arctic charr are the dominant species at certain areas of the rivers especially at slow flowing areas at the lower

parts of the rivers. In this report stationary trout and sea-trout were combined, and the same applies for sea-run arctic charr and stationary arctic charr.

In the rod fishery catch-and-release has been increasing in popularity and is on voluntarily basis by the anglers. In most recent years, anglers have been encouraged by the Institute of Freshwater Fisheries, the Federation of Icelandic river owners and the Association of Icelandic angling clubs to release two sea winter salmon in order to protect the two sea winter salmon stock component that have steadily been decreased in number since the mid 1980s. The catch statistics is processed for both the total catch and the catch landed.

RESULTS

The 2003 fishery

A total of 34.111 salmon were caught in rod fisheries in Icelandic rivers in 2003 where of 5.361 (15,7%) was released and the catch landed (caught and retained) was 28.750 salmon (Table 1). The catch landed was 86.653 kg by weight. In the rod fishery the catch of grilse (1SW) was 23.039 fish and 56.013 kg and 5.711 salmon (2SW) weighing 30.633 kg. Of the released fish 3.530 (13,3%) were grilse and 1.826 (24,2%) salmon. Of the statistical regions the highest number of fish was caught in the rod fishery was in Vesturland 15.494 fish where off 1.934 was released and the catch landed 13.560 fish and 35.573 kg. There were lower catch recorded in other areas (Table 1).

The catch in the net fishery was in total 7.582 fish and 23.012 kg. The highest number of fish was caught in Suðurland, 6.767 fish (Table 2). Of the net catch 4.480 and 12.274 kg was grilse and 3.102 and 10.738 kg was salmon. There were no reports of harvest from ocean ranching in 2003.

The total combined catch landed (rod and nets) in Iceland were 36.332 fish and 109.665 kg where off 27.519 were 1SW and 8.813 2SW. The 1SW catch was 68.287 kg and 2SW catch was 41.371 kg (Table 3).

The total number of brown trout caught in rod fishery was 39.645 fish where off 6.449 were released and the catch landed 33.196 kg (table 4). The total number of Arctic charr in rod fishery was 31.169 fish where off 2.003 was released and the catch landed 29.166 fish and 24.980 kg.

In 2003 344 (1%) fewer salmon were caught than in 2002 (table 5; figure 2) and 1,9% lower than the average catch in the period from 1974 to 2002. The salmon catch in the net fishery increased by 65,4% from the 2002 fishing season and the catch was close to the half of the average catch in the period from 1974-2002 (Table 5, Figure 3).

No ocean ranching activities have been since 1998. In previous years, substantial activities of ocean ranching with Atlantic salmon was operated in Iceland reaching up to 168 thousand fish caught in 1993 (Table 5; Figure 4).

The highest number of salmon caught in rod fishery was in River Langá 2.263 fish with Þverá-Kjarrá in second place with 1.872 fish and Ytri-Rangá in third place with 1.723 salmon. The list of top 10 salmon rivers is shown in table 6. It is worth noticing that the top 10 list changes if it only includes the landed catch.

The top 10 list of brown trout is shown in table 7 and the top 10 list of Arctic charr is shown in table 8. Since 1987 the catch of brown trout and arctic charr have increased (Figure 5 and 6).

The rod catch for individual rivers are listed by statistical areas in tables 9-15. The salmon catch in most Icelandic rivers are listed in table 16 in the period from 1974-2003 including average catch, maximum and minimum catch in the period. The rod catch for brown trout from 1987-2003 is listed in table 17 and for arctic charr in table 18.

The catch in the net fishery divided by species, rivers and regions is listed in table 19. The highest catch was in River Þjórsá that is a glacial river in Southwest Iceland.

Age compositions of the salmon catch

The sea-age composition of salmon is shown in figure 7. The figure includes the rivers with yearly catch records since 1970 and includes at the average 88% of the annual salmon catch. It is worth noting that after high catch in the 1980s the catch of 1SW salmon decreased after 1979 and improved after 1985. The 2SW salmon showed similar pattern but instead of improving like the 1SW fish the 2SW salmon stock component have shown a steady decline since the mid 1980s.

DISCUSSION

Since 1932 there has been a general ban on ocean fishery for salmon in Icelandic waters with the exception of few locations with coastal fishery. The number of nets used in river has been decreasing due to lease of nets and buy-out of fishing rights, by anglers and river owners. Now the fishing rights in coastal areas have been bought-out permanently with the support from the government. Since the 1998 fishing season all salmon were harvested in freshwater. The number of rods allowed and used in Icelandic salmon rivers has been almost the same for the past 30 years. With stable effort the catch can to large extent be used as an indicator for the size of the salmon run. It can also be seen from the catch statistics that the salmon catch in rivers in the same area show similar fluctuations.

The proportion of 2SW fish is usually higher in rivers in the north and northeast Iceland than in the south and southwest. Since 1981-1983 the number of 2SW salmon has been declining. This happens although the sex ratio of the run is stable with close to 65% females for MSW and 20% for 1SW for the period from 1973. That relates to higher mortality at the second year at sea in the later years (Gudbergsson and Gudjonsson 2003). The reasons for this is not clear but this seems to be connected to environmental factors in the ocean (Gudjonsson et al. 1995) that are most likely poor conditions at the feeding grounds for salmon at their second year at sea. These changes have more effects to the catch in rivers with high proportion of 2SW salmon.

There are considerable fluctuations between years in the salmon catch in Iceland. Usually salmon catch in rivers in the same region fluctuate together. The size of the salmon run depends on the number of smolts produced in each river and their survival at sea. It seems to be that common factors affect the production of smolts in the rivers in the same area and also the return rate from the ocean. Climatic factors are of greatest importance and significant correlation has been found between the catch of grilse and ocean temperature at the time the smolts are migrating in the spring or early summer (Scarnecchia 1984; Antonsson et al. 1996).

The exploitation rate in the rod fisheries, in Icelandic rivers, has been estimated to be between 30-80% (Gudjonsson 1986). Recent information on exploitation in the rod fishery indicates that it can, in some rivers, be as high as 50-60% for 1SW salmon and 60-80% (Gudjonsson et al. 1996). Further studies on exploitation and the size of the spawning stock in Icelandic salmon rivers are needed.

The numbers of brown trout and Arctic charr caught in the rod fishery in Iceland have generally been increasing for the last decade. This is likely to relate to better recordings of the catch, increased popularity of trout and charr fishery. The catch records are believed to reflect the fluctuations in the run at least for the past few years. Anglers are encouraged to record the trout and charr catch in the same manner as the salmon catch. The catch records give valuable information on fluctuation in salmon stocks and stock compositions. The catch is also an indicator on the prospects of catch in rivers and for evaluation the price of fishery.

REFERENCES

- Antonsson, Th., Gudbergsson, G. and Gudjónsson, S. 1996. Environmental continuity in fluctuation of fish stocks in the North Atlantic Ocean, with particular reference to Atlantic salmon. *North American Journal of Fisheries Management* 16:540-547.
- Gudbergsson, G. 2002. Lax- og silungsveiðin 2001. Report from The Institute of Freshwater Fisheries, VMST-R/0207. 27 pp.
- Guðni Guðbergsson og Sigurður Guðjónsson 2003. Marine mortality of Atlantic salmon in Iceland. pp 110-114. In: *Marine mortality of Atlantic salmon, Salmo salar L: methods and measures*. E.C.E. Potter, N. Ó Maoilédigh og G. Chaput (Eds.) Canadian Science Advisory Secretariat. Research Document 2003/101.
- Gudjónsson, Th. 1986. Exploitation of Atlantic Salmon in Iceland. In: *Atlantic Salmon: Planning for the future*. (ed.) Derik Mills and David Piggins.
- Gudjónsson, S. Einarsson, S.M., Antonsson, Th. and Gudbergsson, G. 1995. Relation of grilse/salmon ratio to environmental changes in several wild stocks of Atlantic salmon (*Salmo salar*) in Iceland. *Can. J. Fish. Aquat. Sci.* 52:1385-1398.
- Scarnecchia, D.L. 1984. Climatic and oceanic variations affecting yield of Icelandic stocks of Atlantic salmon. *Can. J. Fish. Aquat. Sci.*, Vol 41, pp 917-935.
- Scarnecchia, D.L. 1984. Forecasting yields of two-sea-winter Atlantic salmon (*Salmo salar*) from Icelandic Rivers. *Can. J. Fish. Aquat. Sci.*, 8:1234-1240.
- Scarnecchia, D.L., Isaksson, A., White, S.E. 1989. New and revised catch forecasts for two-sea-winter Atlantic salmon (*Salmo salar*) in Icelandic rivers. *J. Appl. Ichthyol.* 5:101-110.

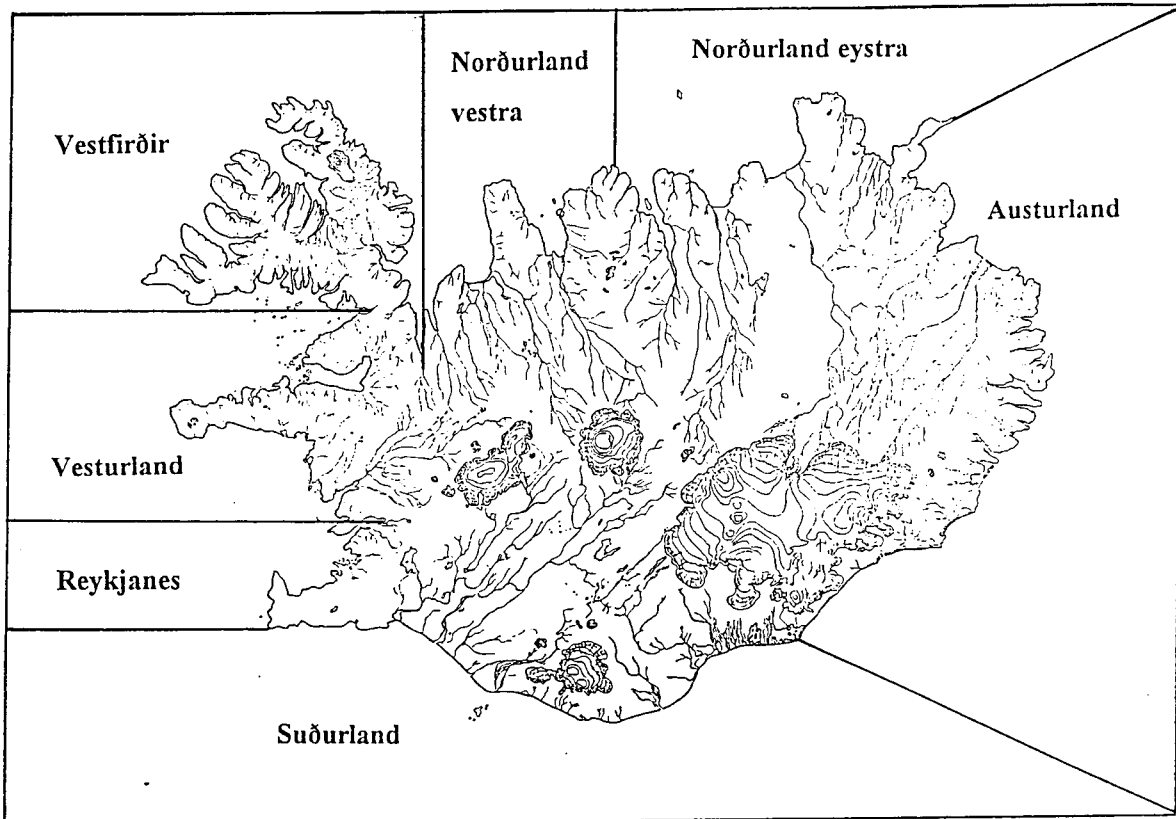


Figure 1. Statistical regions for the Atlantic salmon, brown trout and Arctic charr catch in Iceland.

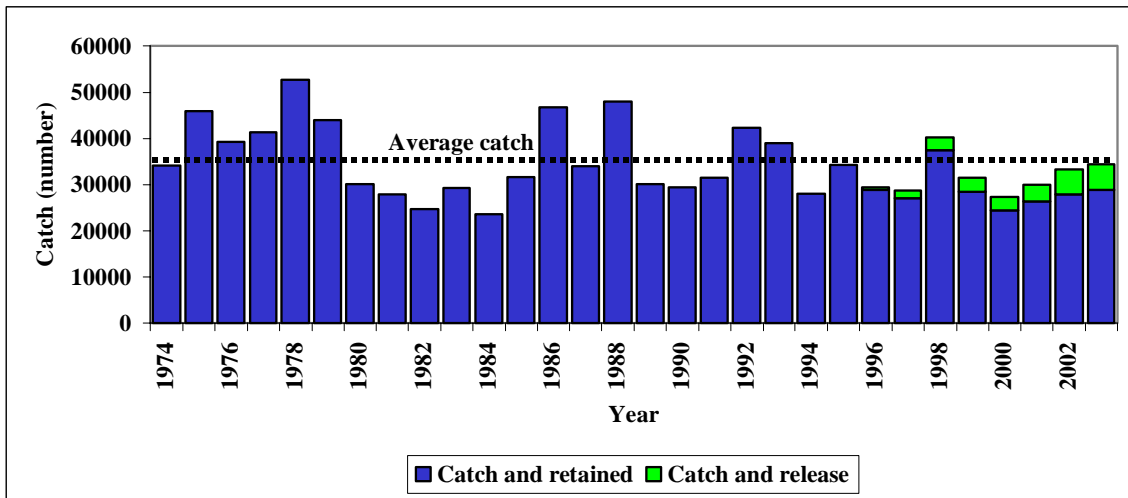


Figure 2. Salmon catch in rod and line fishery in Iceland 1974 - 2003.

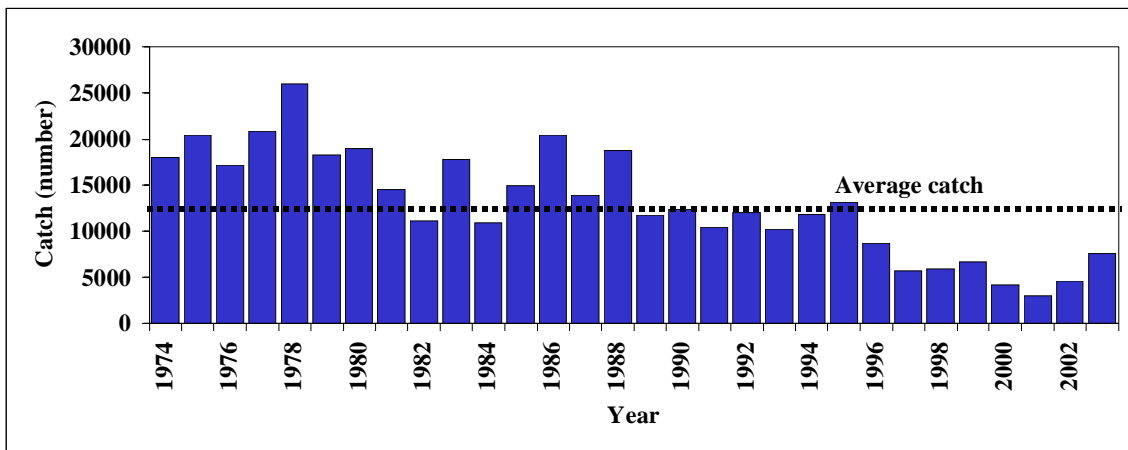


Figure 3. Salmon catch in gillnet fishery in Iceland 1974 - 2003.

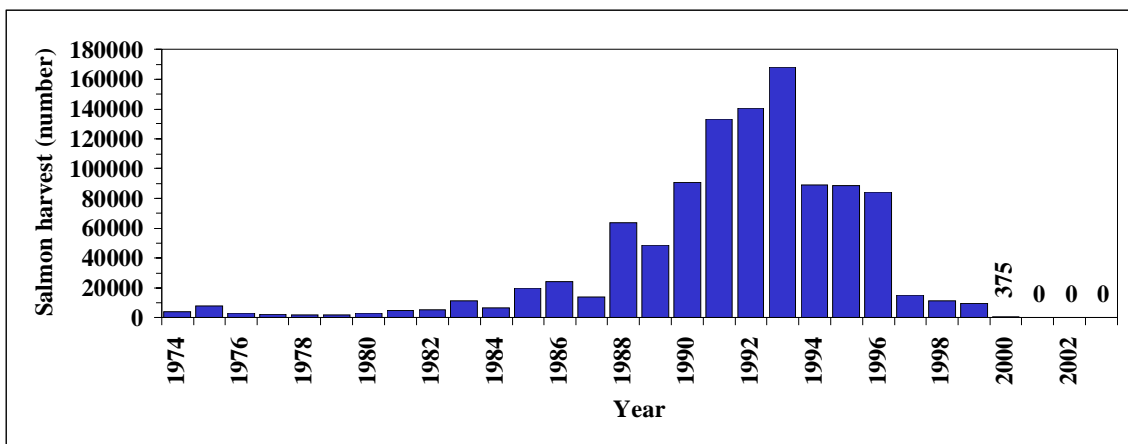


Figure 4. Salmon harvest in ocean ranching in Iceland 1974-2003.

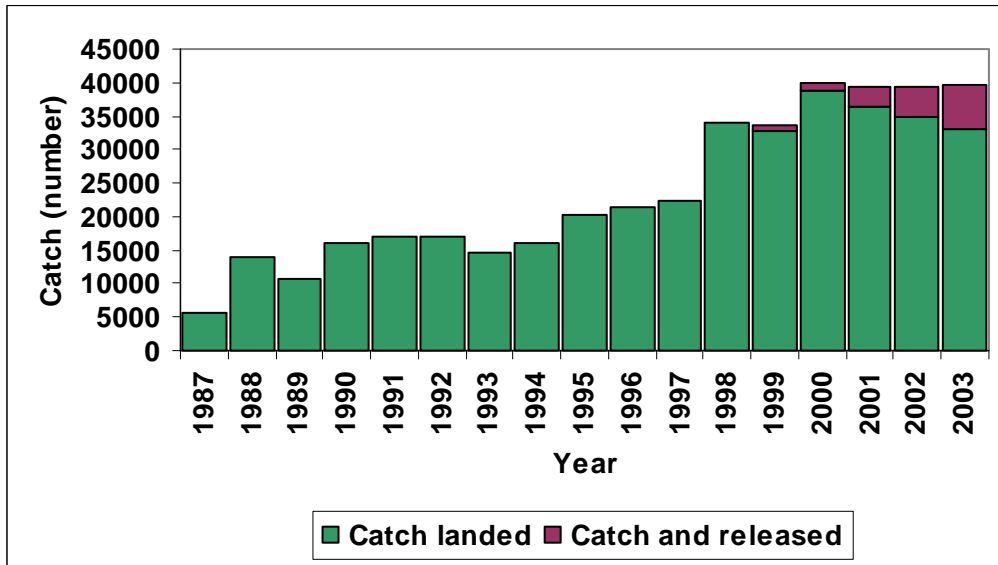


Figure 5. The catch of brown trout in the rod fishery in Iceland 1987-2003, including catch and release.

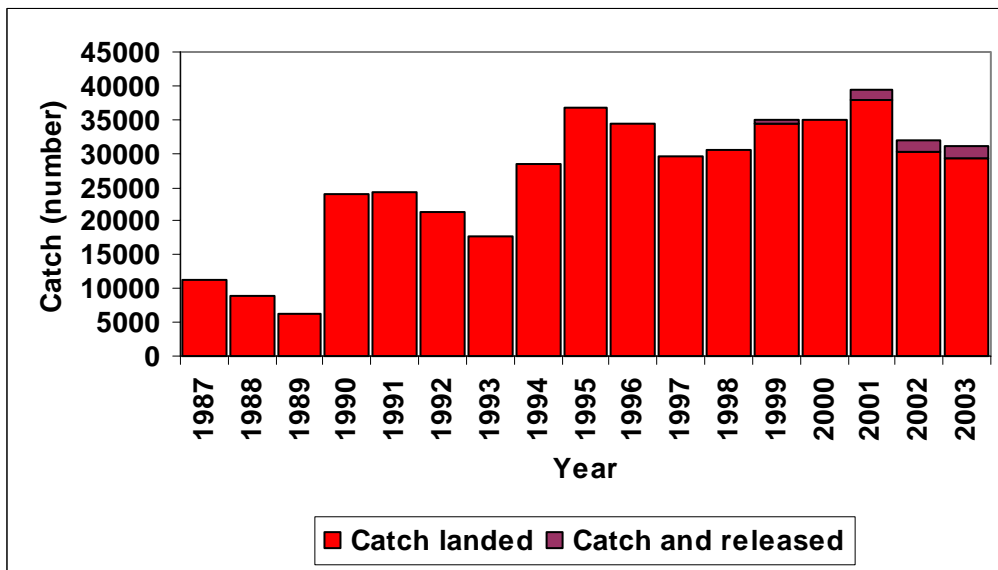


Figure 6. The catch of Arctic charr in the rod fishery in Iceland 1987-2003, including catch and release.

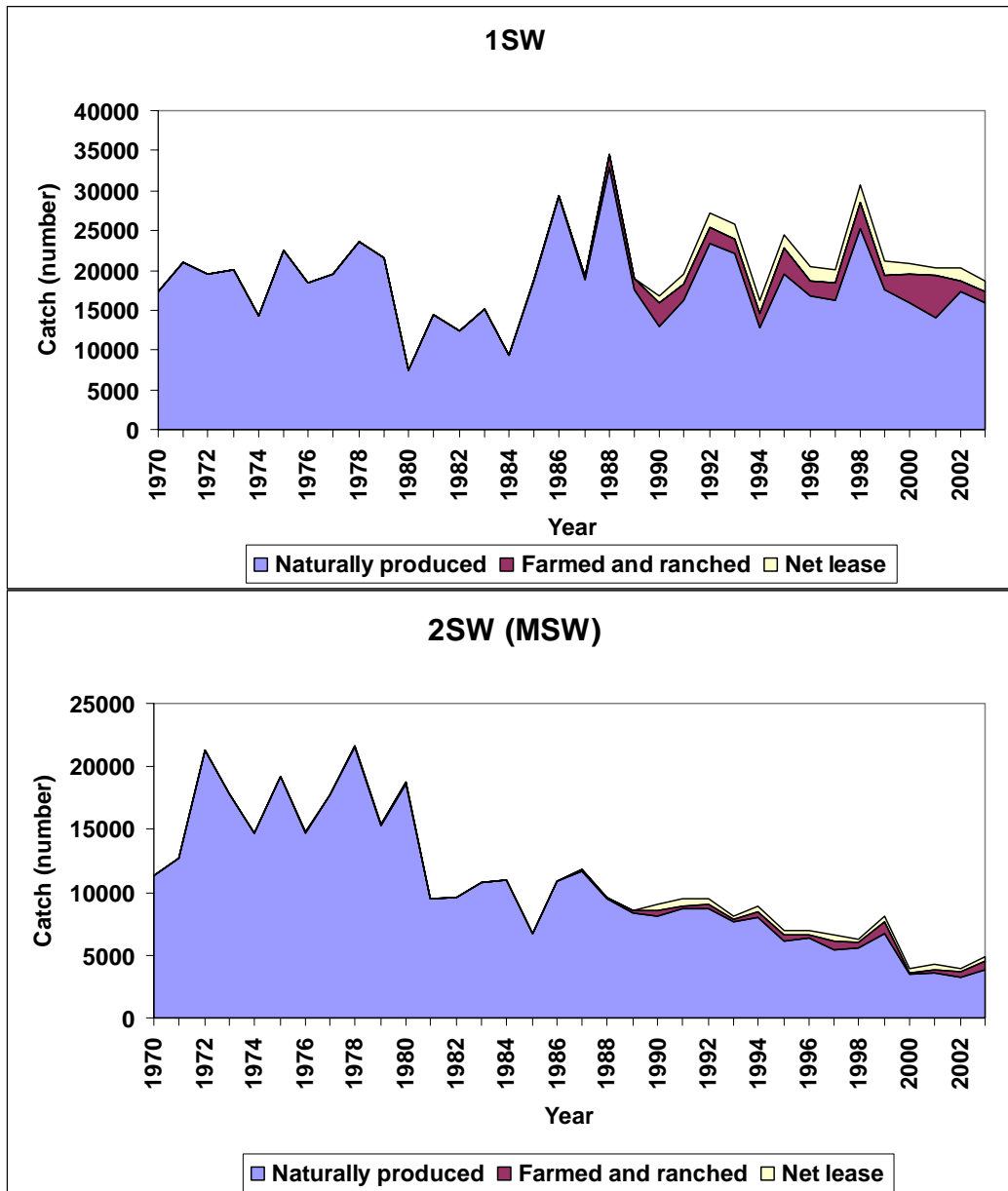


Figure 7. The sea-age composition of Atlantic salmon in the rod catch in Icelandic rivers 1970-2003. The estimated number of fish from net lease and of framed origin is shown.

Table 1. Salmon catch, rod and line, in Icelandic rivers 2003.

Region	Salmon catch, rod and line											
	Catch	Released	Released	Released	Catch	Catch	Catch	MW	Catch	Catch	MW	Catch
	(number)	(number)	1SW	2SW	landed	landed	1SW	1SW	1SW	2SW	2SW	2SW
Reykjanes	3170	657	614	43	2513	6280	2389	2,39	5709	124	4,60	571
Vesturland	15494	1934	1695	239	13560	35573	12438	2,44	30300	1122	4,70	5273
Vestfirðir	726	24	18	6	702	2085	567	2,42	1371	135	5,24	707
Norðurland vestra	3356	631	347	284	2725	9311	1830	2,42	4430	895	5,45	4881
Norðurland eystra	2539	501	169	327	2038	8543	922	2,26	2084	1116	5,79	6459
Austurland	3708	1406	541	865	2302	8967	1087	2,12	2305	1215	5,48	6662
Suðurland	5118	208	146	62	4910	15894	3806	2,58	9814	1104	5,51	6080
Total	34111	5361	3530	1826	28750	86653	23039	2,43	56013	5711	5,36	30633

Table 2. Salmon catch, nets, in Icelandic river 2003.

Region	Salmon catch, nets						Ranched	
	Catch	Catch	Catch	Catch	Catch	Catch	Catch	Catch
	(number)	(kg)	number	(kg)	(number)	(kg)	(number)	(kg)
Reykjanes	0	0	0	0	0	0	0	0
Vesturland	683	1913	573	1719	110	194	0	0
Vestfirðir	0	0	0	0	0	0	0	0
Norðurland vestra	10	35	9	27	1	8	0	0
Norðurland eystra	99	383	52	125	47	258	0	0
Austurland	23	104	11	42	12	62	0	0
Suðurland	6767	20577	3835	10361	2932	10216	0	0
Total	7582	23012	4480	12274	3102	10738	0	0

Table 3. Total salmon catch in Icelandic rivers 2003, rod, gillnets and ranched.

Region	Salmon catch total (rod, nets and ocean ranched)						Percentage of total	
	Catch	Catch	Catch	Catch	Catch	Catch	Number	Weight
	(number)	(kg)	number	(kg)	(number)	(kg)	%	%
Reykjanes	2513	6280	2389	5709	124	571	6,9	5,7
Vesturland	14243	37486	13011	32019	1232	5467	39,2	34,2
Vestfirðir	702	2085	567	1371	135	707	1,9	1,9
Norðurland vestra	2735	9346	1839	4457	896	4889	7,5	8,5
Norðurland eystra	2137	8926	974	2209	1163	6717	5,9	8,1
Austurland	2325	9071	1098	2347	1227	6724	6,4	8,3
Suðurland	11677	36471	7641	20175	4036	16296	32,1	33,3
Total	36332	109665	27519	68287	8813	41371	100,0	100,0

Table 4. Catch of brown trout and Arctic charr in rod and line fishery in Icelandic river and lakes in 2003.

Region	Catch with rod and line				Catch with rod and line			
	Brown trout (searun and stationary)				Arctic charr (searun and stationary)			
	Catch (number)	Catch and released	Catch landed (number)	Catch landed (kg)	Catch (number)	Catch and released	Catch landed (number)	Catch landed (kg)
Reykjanes	2363	70	2293	1268	299	0	299	143
Vesturland	2394	82	2312	2675	2949	99	2850	2639
Vestfirðir	74	0	74	67	1332	58	1274	695
Norðurland vestra	6121	904	5217	3394	10046	91	9955	8928
Norðurland eystra	9512	2475	7037	9553	4592	296	4296	4186
Austurland	1169	39	1130	966	3293	161	3132	2067
Suðurland	17187	2879	14308	17216	8619	1298	7321	6279
Total	38820	6449	32371	35139	31130	2003	29127	24937

Table 5. The salmon catch in Iceland 1974 - 2003 by catch method.
Percentage of wild salmon in the total catch is shown.

Year	Rod catch	Catch and released	Released (%)	Rod catch retained	Net catch	Catch rod and net	Ocean ranching	Total catch number	Wild salmon (%)
1974	34107			34107	18044	52151	3765	55916	93,3
1975	45882			45882	20402	66284	7720	74004	89,6
1976	39249			39249	17130	56379	3247	59626	94,6
1977	41302			41302	20864	62166	2405	64571	96,3
1978	52679			52679	25946	78625	1953	80578	97,6
1979	43955			43955	18306	62261	1967	64228	96,9
1980	30007			30007	18992	48999	3138	52137	94,0
1981	27777			27777	14478	42255	4626	46881	90,1
1982	24671			24671	11107	35778	5340	41118	87,0
1983	29267			29267	17761	47028	11194	58222	80,8
1984	23582			23582	10912	34494	6595	41089	83,9
1985	31621			31621	14942	46563	19750	66313	70,2
1986	46671			46671	20437	67108	24100	91208	73,6
1987	33907			33907	13960	47867	14140	62007	77,2
1988	47979			47979	18781	66760	64017	130777	51,0
1989	30082			30082	11738	41820	48617	90437	46,2
1990	29443			29443	12339	41782	90726	132508	31,5
1991	31492			31492	10454	41946	133203	175149	23,9
1992	42309			42309	12062	54371	140763	195134	27,9
1993	39025			39025	10197	49222	168427	217649	22,6
1994	28042			28042	11846	39888	89225	129113	30,9
1995	34241			34241	13185	47426	88527	135953	34,9
1996	29436	669	2,3	28767	8668	37435	84365	121800	30,7
1997	28640	1558	5,4	27082	5735	32817	15248	48065	68,3
1998	40286	2826	7,0	37460	5939	43399	11223	54622	79,5
1999	31438	3055	9,7	28383	6657	35040	9648	44688	78,4
2000	27257	2918	10,7	24432	4170	28602	375	28977	98,7
2001	29943	3611	12,1	26332	3043	29375	0	29375	100,0
2002	33767	5985	17,7	27782	4583	32365	0	32365	100,0
2003	34111	5361	15,7	28750	7582	36332	0	36332	100,0
1974 - 2002 average:	34761	2946		34053	13196	47248	36355	83604	56,5

Table 6. Top 10 lists of salmon rivers in 2003 including catch landed and catch and released and for catch landed only.

No	River	Salmon Catch ¹		No	River	Catch landed
1	Langá	2263		1	Langá	1957
2	Þverá og Kjarrá	1872		2	Þverá og Kjarrá	1783
3	Ytri-Rangá	1723		3	Eystri-Rangá	1697
4	Eystri-Rangá	1720		4	Ytri-Rangá	1585
5	Laxá í Kjós og Bugða	1656		5	Laxá í Dölum	1379
6	Selá í Vopnafirði	1558		6	Norðurá	1247
7	Hofsá	1483		7	Laxá í Kjós og Bugða	1025
8	Norðurá	1444		8	Selá í Vopnafirði	872
9	Laxá í Dölum	1394		9	Hofsá	870
10	Grímsá og Tunguá	1156		10	Hvítá í Borgarfirði	858

¹ Includes catch landed and catch and released

Table 7. Top 10 list of river or lakes with brown trout in 2003 including both migratory and stationary fish stocks.

No	River or Lake	Brown trout catch
1	Veiðivötn	9334
2	Fremri Laxá á Ásum	3646
3	Laxá í Mývatnssveit	3434
4	Laxá í Laxárdal	1703
5	Reykjadalsá	1247
6	Meðalfellsvatn	1228
7	Grenlækur	1189
8	Litlaá	1022
9	Hróarsholtslækur	924
10	Laxá í Aðaldal	905

Table 8. Top 10 list of river or lakes with arctic charr in 2003 including both migratory and stationary fish stocks.

No	River or Lake	Arctic charr catch
1	Hlíðarvatn	2411
2	Flókadalsá og vötn	2279
3	Víðidalsá og Fitjá	2144
4	Arnarv.-Stóra og Austurá	1897
5	Veiðivötn	1770
6	Eyjafjarðará	1678
7	Vatnsdalsá	1430
8	Skógaá	1380
9	Brúará	1209
10	Vesturdalsá	1002

Table 9. Number and weight in the rod catch in Reykjanes in 2003. Total catch, catch landed, mean weight, grilse/salmon ratio of Atlantic salmon, brown trout and Arctic charr (MW = mean weight (kg)).

River	Salmon						Grilse (1SW)			Salmon (2SW)			Brown trout			Arctic charr		
	Catch	Released	Catch landed	Weight landed	MW	grilse/salmon	Catch	Landed	Weight Landed	Catch	Landed	MW	Catch	Landed	MW	Catch	Landed	MW
Elliðaár	472	3	469	1181	2.5	46.2	462	460	2.5	10	9	4.2	1	1	4.0	0	0	0.0
Elliðavatn													646	646	0.5	260	260	0.5
Úlfarsá (Korpa)	273	8	265	654	2.5	33.1	265	257	2.4	8	8	3.9	64	64	1.2	0	0	0.0
Leirvoggsá	558	6	552	1263	2.3	54.8	548	542	2.2	10	10	5.3	140	139	1.1	1	1	0.4
Kiðafellsá *			0															
Laxá í Kjós	1457	541	916	2355	2.6	13.3	1355	847	2.4	102	69	4.4	233	165	1.7	0	0	0.0
Bugða	200	89	111	287	2.6	14.4	187	105	2.4	13	6	4.8	5	5	0.9	1	1	1.5
Meðalfellsvatn	10	0	10	29	2.9	0.0	8	8	2.5	2	2	4.2	1228	1228	0.3	34	34	0.2
Brynjudalsá	77	3	74	192	2.6	10.0	70	69	2.5	7	5	4.0	3	3	1.1	0	0	0.0
Botnsá	123	7	116	319	2.8	7.2	108	101	2.3	15	15	5.6	43	42	1.3	3	3	1.4
Djúpavatn *																		
Reykjanes Total:	3170	657	2513	6280		18.0	3003	2389		167	124		2363	2293		299	299	

* no records

Table 10. Number and weight in the rod catch in Vesturland in 2003. Catch, landed, mean weight, grilse/salmon ratio of Atlantic salmon, brown trout and Arctic charr (MW = mean weight (kg)).

River	Salmon						Grilse (1SW)			Salmon (2SW)			Brown trout			Arctic charr		
	Catch	Released	Catch landed	Weight landed	MW	grilse/salmon	Catch	Landed	Weight Landed	Catch	Landed	MW	Catch	Landed	MW	Catch	Landed	MW
Vötn í Svínadal	5	0	5	10	1.9		5	5	1.9	0	0	0.0	32	32	0.8	31	31	0.5
Selós og Þverá	100	0	100	243	2.4	10.1	91	91	2.2	9	9	4.4	66	66	1.1	2	2	0.5
Laxá í Leirársveit	1133	337	796	1973	2.5	19.2	1077	764	2.4	56	32	4.5	179	140	1.5	24	24	1.2
Leirá í Leirársveit	2	0	2	6	3.0	1.0	1	1	1.5	1	1	3.5	38	33	1.2	19	18	1.2
Hvítá í Borgarfirði	861	3	858	2390	2.8	5.9	737	735	2.4	124	123	4.8	595	592	1.1	17	17	1.4
Hvítá í Borg. Efrilut	57	0	57	160	2.8	6.1	49	49	2.4	8	8	4.8	67	67	1.1	584	584	1.4
Andakvílsá	245	10	235	636	2.7	11.9	226	218	2.5	19	17	4.9	7	7	0.9	203	202	0.6
Grímsá og Tunguá	1156	346	810	2225	2.7	9.2	1043	740	2.5	113	70	5.0	175	174	1.5	1	1	1.2
Flókadalsá	334	4	330	761	2.3	32.4	324	320	2.3	10	10	3.9	2	2	1.1	0	0	0.0
Reykjadalsá	156	1	155	438	2.8	6.4	135	134	2.6	21	21	4.4	35	34	1.2	13	13	1.6
Þverá og Kjarrá	1872	89	1783	4946	2.8	6.8	1633	1566	2.5	239	217	4.9	299	298	1.2	15	15	1.0
Norðurá	1444	197	1247	3159	2.6	7.0	1264	1104	2.3	180	143	4.6	159	156	1.2	22	22	1.0
Norðlingafjöt *																		
Gljúfurá	88	0	88	205	2.3	21.0	84	84	2.3	4	4	4.1	16	16	0.9	0	0	0.0
Langá	2263	306	1957	4991		23.1	2169	1874	2.5	94	83	4.2	0	0	0.0	0	0	0.0
Urriðará	80	3	77	191	2.5	19.0	76	75	2.4	4	2	4.1	80	80	0.7	3	3	0.9
Álftá og Veita	278	3	275	779	2.9	6.7	242	241	2.6	36	34	4.7	238	229	1.1	2	2	0.7
Hítará	448	5	443	1202	2.7	11.4	412	407	2.6	36	36	4.4	36	35	1.2	126	120	1.1
Haffjarðará	1007	559	448	1239	2.9	7.5	889	413	2.6	118	35	4.9	74	57	1.2	105	72	1.4
Núpa í Eyjahreppi	4	0	4	13	3.3	3.0	3	3	2.8	1	1	5.0	8	8	1.0	8	8	1.0
Laxá í Miklaholtshr.	19	0	19	44	2.3	8.5	17	17	2.2	2	2	3.7	43	43	0.9	50	50	1.0
Straumfjarðará	379	3	376	995	2.6	14.2	354	351	2.5	25	25	4.7	14	14	1.4	38	38	1.1
Vatnasvæði Lýsu	59	0	59	186	3.2	5.6	50	50	2.8	9	9	4.9	28	28	0.3	60	60	0.5
Staðará *																		
Gríshólsá og Bakká	5	0	5	14	2.7	4.0	4	4	2.3	1	1	4.5	137	135	0.9	128	119	0.8
Fróðá	15	3	12	36	3.0	4.0	12	10	2.7	3	2	4.3	3	3	0.5	145	112	0.7
Setbergsá	47	0	47	122	2.6	5.7	40	40	2.4	7	7	4.0	0	0	0.0	1	1	1.0
Laxá á Skógarströnd	169	0	169	412	2.4	32.8	164	164	2.4	5	5	4.1	0	0	0.0	0	0	0.0
Svínafossá *			0															
Dunká	169	0	169	438	2.6	20.1	161	161	2.5	8	8	4.5	0	0	0.0	3	3	0.6
Hörudalsá *																		
Skrauma *																		
Miðá og Tunguá	159	0	159	396	2.5	16.7	150	150	2.4	9	9	4.1	0	0	0.0	273	273	0.8
Haukadalsá neðri	640	5	635	1584	2.5	13.2	595	593	2.3	45	42	4.6	0	0	0.0	50	50	1.0
Haukadalsá efri	10	0	10	32	3.2	2.3	7	7	2.6	3	3	4.7	0	0	0.0	453	450	0.6
Laxá í Dölum	1394	15	1379	3656	2.7	11.4	1282	1271	2.4	112	108	5.0	5	5	0.8	31	31	0.6
Ljárskógarvötn	0	0	0	0	0.0	0.0	0	0	0.0	0	0	0.0	23	23	1.2	0	0	0.0
Fáskrúð	182	3	179	427	2.4	19.2	173	170	2.3	9	9	5.0	0	0	0.0	0	0	0.0
Glerá	16	0	16	34	2.1		16	16	2.1	0	0	0.0	2	2	0.7	0	0	0.0
Laxá í Hvammssveit	33	4	29	58	2.0		33	29	2.0	0	0	0.0	2	2	0.9	1	1	0.8
Flekkudalsá	284	35	249	599	2.4	20.8	271	238	2.3	13	11	4.3	9	9	1.0	6	6	0.6
Krossá	95	0	95	225	2.4	12.6	88	88	2.2	7	7	4.8	18	18	0.6	48	48	0.4
Búðardalsá	245	3	242	651	2.7	7.4	216	215	2.5	29	27	4.5	1	1	0.5	0	0	0.0
Staðarhólsá og Hvolsa	41	0	41	97	2.4	40.0	40	40	2.3	1	1	5.0	3	3	0.7	487	474	0.9
Vesturland Total:	15494	1934	13560	35573	2.3	10.4	14133	12438		1361	1122		2394	2312		2949	2850	

* no records

Table 11. Number and weight in the rod catch in Vestfirðir 2003. Catch, landed, mean weight, grilse/salmon ratio of Atlantic salmon, brown trout and Arctic charr (MW = mean weight (kg)).

River	Salmon						Grilse (1SW)			Salmon (2SW)			Brown trout			Arctic charr		
	Catch	Released	Catch landed	Weight landed	MW	grilse/salmon	Catch	Landed	Weight Landed	Catch	Landed	MW	Catch	Landed	MW	Catch	Landed	MW
Gufudalsá	0	0	0	0	0.0		0	0	0.0	0	0	0.0	0	0	0.0	546	533	0.4
Þorskafjarðará	0	0	0	0	0.0		0	0	0.0	0	0	0.0	0	0	0.0	169	127	0.6
Fjarðarhornská	33	3	30	85	2.8	3.1	25	23	2.2	8	7	4.9	0	0	0.0	116	116	0.5
Mórudalsá	45	0	45	126	2.8	3.1	34	34	2.2	11	11	4.9	0	0	0.0	15	15	1.0
Suðurfossá *			0															
Botnsá	3	0	3	7	2.4		3	3	2.4	0	0	0.0	0	0	0.0	17	17	0.4
Heydalsá *			0															
Langadalsá	150	8	142	388	2.7	4.0	120	113	2.1	30	29	5.2	0	0	0.0	64	63	0.8
Ísafjarðará	14	0	14	36	2.5	6.0	12	12	2.2	2	2	4.7	0	0	0.0	10	8	0.6
Laugardalsá	324	10	314	860	2.7	13.1	301	293	2.5	23	21	4.6	72	72	0.9	21	21	1.9
Laugarbólsvatn	23	0	23	71	3.1	1.9	15	15	2.3	8	8	4.5	0	0	0.0	0	0	0.0
Hvannadalsá *			0															
Selá í Skjaldfannardal	0	0	0	0			0	0	0.0	0	0	0.0	0	0	0.0	68	68	1.0
Þjarnarfjarðará *			0															
Selá í Steingrímsf.	19	0	19	67	3.5	1.7	12	12	2.7	7	7	5.0	0	0	0.0	232	232	0.5
Staðará í Steingr. *			0															
Víðidalsá í Steingr.	8	0	8	40	5.0	0.3	2	2	2.4	6	6	5.8	0	0	0.0	0	0	0.0
Hrófá	29	0	29	89	3.1	3.1	22	22	2.3	7	7	5.4	1	1	1.0	47	47	0.7
Prestbakkaá	8	0	8	31	3.9	1.0	4	4	1.9	4	4	5.9	0	0	0.0	0	0	0.0
Krossá	29	0	29	124		0.9	14	14	2.4	15	15	6.0	0	0	0.0	0	0	0.0
Víkurá	39	3	36	154	4.2	0.7	16	15	2.3	23	21	5.6	1	1	1.0	26	26	0.5
Laxá í Hrótafirði	2	0	2	7	3.5	1.0	1	1	2.5	1	1	4.2	0	0	0.0	1	1	1.2
Vestfirðir Total:	726	24	702	2085	2.9	4.0	581	563		145	139		74	74		1332	1274	

* no records

Table 12. Number and weight in the rod catch in Nordurland vestra 2003. Catch, landed, mean weight, grilse/salmon ratio of Atlantic salmon, brown trout and Arctic charr (MW = mean weight (kg)).

River	Salmon						Grilse (1SW)			Salmon (2SW)			Brown trout			Arctic charr		
	Catch	Released	Catch landed	Weight landed	MW	grilse/salmon	Catch	Landed	Weight Landed	Catch	Landed	MW	Catch	Landed	MW	Catch	Landed	MW
Hrótafjarðará og Síká	164	11	153	513	3.3	2.4	116	106	2.4	48	47	5.4	4	4	0.5	303	296	1.2
Tjarnará	36	0	36	109	3.0	2.0	24	24	2.0	12	12	5.0	0	0	0.0	138	138	2.4
Hamarsá	1		1	3	3.0		1	1	3.0	0	0	0.0	0	0	0.0	30	30	0.6
Miðfjarðará	577	69	508	1584	3.1	2.7	422	371	2.4	155	137	5.2	22	22	1.2	225	223	1.3
Arnarv.-Stóra og Austurá													392	392	0.8	1897	1851	0.6
Víðidalsá og Fitjá	588	12	576	2106	3.7	1.9	388	383	2.5	200	193	6.0	60	60	1.8	2144	2225	1.5
Vatnsdalsá	547	448	99	380	4.5	1.0	276	63	2.6	271	36	6.4	729	712	0.9	1430	1411	0.8
Giljá	3	0	3	11	3.5	2.0	2	2	2.7	1	1	5.0	1	1	1.0	2	2	0.7
Gljúfurá	47	0	47	160	3.4	1.9	31	31	2.4	16	16	5.4	1	1	0.5	16	16	1.2
Laxá á Ásum	308	44	264	680	2.6	10.0	280	240	2.4	28	24	4.8	7	7	0.8	1	1	1.5
Fremri Laxá á Ásum	15	0	15	37	2.5		15	15	2.4	0	0	0.0	3646	3041	0.4	8	7	0.4
Blanda	504	12	492	1847	3.7	1.2	275	268	2.4	229	224	5.3	23	23	1.6	78	78	1.0
Svartá	276	2	274	1014	3.7	1.2	150	149	2.4	126	125	5.3	29	24	1.1	139	139	1.1
Langavatn á Refas.			0										93	93	1.3	1	1	1.0
Seyðisá *			0															
Blöndulón *			0															
Laxá á Refasveit	82	0	82	291	3.6	1.6	50	50	2.3	32	32	5.5	8	8	0.8	3	3	0.5
Hallá &			0															
Laxá í Nesjum	11	0	11	49	4.5	0.4	3	3	2.2	8	8	5.3	0	0	0.0	0	0	0.0
Fossá á Skaga	12	0	12	54	4.5	1.4	7	7	2.6	5	5	5.2	0	0	0.0	0	0	0.0
Laxá á Skaga &																		
Húseyjarkvísl	63	21	42	128	3.4	2.5	45	33	2.6	18	9	5.2	587	361	1.4	27	18	0.6
Sæmundará	18	9	9	25	3.3	2.6	13	8	2.7	5	1	5.0	18	18	1.2	239	239	1.0
Norðurá í Skagafirði *																		
Héraðsvötn	0	0	0	0	0.0	0.0	0	0	0.0	0	0	0.0	0	0	0.0	0	0	0.0
Hjaltadalsá og Kolka	28	0	28	95	3.4	1.8	18	18	2.4	10	10	5.2	7	5	1.3	389	365	1.1
Hrollleifsdalsá	3	0	3	8	2.5		3	3	2.5	0	0	0.0	75	72	0.8	409	405	0.6
Flókadalsá og vötn	24	0	24	72	3.0	5.0	20	20	2.5	4	4	5.7	419	373	0.8	2279	2255	0.4
Fljótaá	49	3	46	145	3.2	3.5	38	35	2.5	11	11	5.4	0	0	0.0	288	252	1.2
Total	3356	631	2725	9311	71.4		2177	1830		1179	895		6121	5217		10046	9955	

* no records
& fishery closed

Table 13. Number and weight in the rod catch in Nordurland eystra 2003. Catch, landed, mean weight, grilse/salmon ratio of Atlantic salmon, brown trout and Arctic charr (MW = mean weight (kg)).

River	Salmon						Grilse (1SW)			Salmon (2SW)			Brown trout			Arctic charr		
	Catch	Released	Catch landed	Weight landed	MW	grilse/salmon	Catch	Landed	Weight Landed	Catch	Landed	MW	Catch	Landed	MW	Catch	Landed	MW
Ólafsfjarðará *																		
Svarfaðardalsá	0	0	0	0	0.0		0	0	0.0	0	0	0.0	80	80	1.1	310	310	0.9
Þorvaldsdalsá *																		
Hörgá	1	0	1	3	3.0		1	1	3.0	0	0	0	43	43	1.0	935	935	1.0
Eyjafjarðará	12	0	12	32	2.7	5.0	10	10	2.2	2	2	5.0	418	415	1.3	1678	1640	1.0
Frjóska	166	5	161	661	4.0	1.0	83	79	2.1	83	82	6.0	73	68	1.2	736	671	1.0
Djúpá	63	1	62	229	3.7	1.2	34	33	2.2	29	29	5.4	0	0	0.0	0	0	0.0
Skjálfandalfjót	346	3	343	1275	3.7	1.2	187	186	2.2	159	157	5.5	35	35	1.0	338	338	0.5
Laxá í Aðaldal	624	228	396	2059	5.2	0.6	226	140	2.7	398	256	6.8	905	654	1.2	37	35	1.3
Laxá í Laxárdal													1703	1249	1.7	8	7	1.2
Laxá í Mývatnssveit													3434	2441	1.4	6	5	0.7
Laxá í Mýv. Haganes													258	234	1.2	5	5	1.2
Kráká *																		
Reykjadalsá	90	84	6	25	3.4	2.9	67	2	2.9	23	4	4.8	1247	1184	0.7	19	11	0.7
Mýrarkvísl	103	0	103	291	2.8	3.9	82	82	2.2	21	21	5.1	0	0	0.0	0	0	0.0
Litlaá	3	0	3	8	2.2		3	3	2.2	0	0	0.0	1022	323	1.8	249	68	1.6
Skjálftavatn	0	0	0	0	0.0		0	0	0.0	0	0	0.0	144	144	1.2	119	119	1.0
Brunná *			0															
Deildará	93	9	84	254	3.2	1.8	60	59	2.2	33	25	4.9	71	71	1.7	17	17	0.8
Ormarsá	233	34	199	756	4.0	0.9	109	105	2.3	124	94	5.5	97	97	2.4	53	53	1.2
Svalbarðsá	291	76	215	913	4.5	0.4	83	78	2.3	208	137	5.4	10	10	0.9	19	19	1.2
Sandá	151	7	144	632	4.4	0.6	56	54	2.2	95	90	5.8	0	0	0.0	0	0	0.0
Hafrónsá	237	53	184	896	5.0	0.3	51	45	2.2	186	139	5.8	9	9	1.5	28	28	1.5
Kverká	10	0	10	49	4.9	0.3	2	2	2.2	8	8	5.6	0	0	0.0	27	27	1.6
Hölkna	105	1	104	425	4.1	0.5	37	37	2.0	68	67	5.2	1	1	2.0	4	4	1.2
Bakkaá (Vf. Sandvíkur	11	0	11	35	3.1	1.2	6	6	2.1	5	5	4.4	9	9	0.7	4	4	0.7
Total	2539	501	2038	8543	3.4	0.8	1097	922		1442	1116		9559	7067		4592	4296	

* no records

Table 14. Number and weight in the rod catch in Austurland 2003. Catch, landed, mean weight, grilse/salmon ratio of Atlantic salmon, brown trout and Arctic charr (MW = mean weight (kg)).

River	Salmon						Grilse (1SW)			Salmon (2SW)			Brown trout			Arctic charr		
	Catch	Released	Catch landed	Weight landed	MW	grilse/salmon	Catch	Landed	Weight Landed	Catch	Landed	MW	Catch	Landed	MW	Catch	Landed	MW
Miðfjarðá og Kverká	152	26	126	469	3.1	0.8	67	62	2.1	85	64	5.3	2	2	0.8	4	4	0.5
Selá í Vopnafirði	1558	686	872	3244	3.7	1.1	804	444	2.1	754	428	5.4	7	4	0.7	63	57	0.7
Vesturdalsá	175		175	624	3.1	1.3	98	98	2.1	77	77	5.4	0	0	0.0	1002	1002	0.4
Hofsá	1440	602	838	3615	4.6	0.4	424	308	2.1	1016	530	5.6	58	57	1.2	276	276	0.7
Sunnudalsá	43	11	32	77	2.5	6.2	37	28	2.1	6	4	4.6	0	0	0.0	0	0	0.0
Gilsá og Selfljót	31	0	31	99	3.2	1.8	20	20	2.2	11	11	5.0	93	93	0.8	447	447	0.8
Kelduá *																		
Fjarðará, Borgarf.	9	0	9	18	2.0	8.0	8	8	1.8	1	1	3.6	17	17	0.6	49	49	0.7
Fjarðará, Seyðisfirði	1	0	1	3	3.0		1	1	3.0	0	0	0.0	0	0	0.0	507	507	0.7
Fjarðará, Loðmundarf	5	0	5	12	2.5		5	5	2.5	0	0	0.0	16	16	1.0	122	111	1.0
Sléttuá í Reyðarfirði	4	0	4	14	3.5		1	1	1.5	3	3	4.2	0	0	0.0	132	130	0.8
Breiðdalsá	202	58	144	584	3.9	1.0	102	65	2.2	100	79	5.6	517	496	0.7	628	486	0.9
Geithellnaá *																		
Laxá í Nesjum	88	23	65	208	3.7	2.3	61	47	2.4	27	18	5.3	459	445	1.0	63	63	0.5
Austurland Total:	3708	1406	2302	8967	2.4	0.8	1628	1087		2080	1215		1169	1130		3293	3132	

* no records

Table 15. Number and weight in the rod catch in Sudurland 2003. Total catch, catch landed, mean weight, grilse/salmon ratio of Atlantic salmon, brown trout and Arctic charr (MW = mean weight (kg)).

River	Salmon						Grilse (1SW)			Salmon (2SW)			Brown trout			Arctic charr		
	Catch	Released	Catch landed	Weight landed	MW	grilse/salmon	Catch	Landed	Weight Landed	Catch	Landed	MW	Catch	Landed	MW	Catch	Landed	MW
Brunná *																		
Laxá, Brúará, Djúpa	3	0	3	6	2.1		3	3	2.1	0	0	0.0	116	115	2.4	17	17	0.8
Eldvatn á Brunas. *																		
Fossálar	0	0	0	0	0.0		0	0	0.0	0	0	0.0	40	40	1.9	56	56	0.7
Vatnamót	3	0	3	16	5.2		0	0	0.0	3	3	5.2	894	581	2.0	11	11	0.9
Hólmasvæði	0	0	0	0	0.0		0	0	0.0	0	0	0.0	239	239	2.6	3	3	0.8
Geirlandsá	36	1	35	104	3.0	3.5	28	27	2.3	8	8	5.5	140	130	2.5	44	43	1.0
Skaftá			0										19	19	1.5			
Hörgsá á Síðu	7	0	7	22	3.1	2.5	5	5	2.3	2	2	5.2	37	34	1.6	4	2	0.5
Fjaðrá *																		
Hæðargarðsvatn *																		
Holtsá *																		
Tungulækur	10	5	5	21	3.4	0.0	6	2	2.5	4	3	4.6	569	125	2.3	38	13	0.9
Grenlækur	1	0	1	2	2.0		1	1	2.0	0	0	0.0	1189	616	1.8	209	126	1.6
Steinsmýrarvötn	0	0	0	0	0.0		0	0	0.0	0	0	0.0	152	112	1.1	79	68	1.4
Eldvatn í Meðallandi	3	0	3	7	2.3	2.0	2	2	2.4	1	1	7.0	76	62	2.2	39	29	1.5
Tungufljót	25	1	24	82	3.5	2.1	17	17	2.8	8	7	5.1	345	255	2.7	62	62	1.1
Kúðafjót	0	0	0	0	0.0	0.0	0	0	0.0	0	0	0.0	0	0	0.0	0	0	0.0
Skálm	0	0	0	0	0.0	0.0	0	0	0.0	0	0	0.0	0	0	0.0	0	0	0.0
Hólsá í Áltaveri	0	0	0	0	0.0	0.0	0	0	0.0	0	0	0.0	52	20	1.8	13	12	1.5
Kelnatóakvísl í Áltaveri	0	0	0	0	0.0	0.0	0	0	0.0	0	0	0.0	0	0	0.0	8	8	1.0
Vatnsá og Kerlingadalsá	38	1	37	108	2.9	4.4	31	30	2.5	7	7	4.6	54	52	1.5	2	1	0.5
Heiðarvatn	5	0	5	14	2.9	1.5	3	3	2.1	2	2	4.0	410	407	1.0	433	427	0.5
Skógaá	64	0	64	339	5.3	0.2	11	11	2.2	53	53	5.9	92	92	0.7	1380	1370	0.8
Markarfljót, Álur *																		
Affall, A-Landeyjum	0	0	0	0	0.0	0.0	0	0	0.0	0	0	0.0	5	5	1.3	1	1	1.1
Ytri-Rangá	1723	138	1585	4954	3.1	4.6	1413	1322	2.6	310	263	5.8	610	207	1.5	48	43	1.4
Eystri-Rangá	1720	23	1697	5403	3.2	4.0	1375	1354	2.5	345	343	5.9	43	43	1.6	31	31	1.5
Þverá	133	4	129	424	3.3	2.8	98	94	2.5	35	35	5.5	119	118	1.0	10	10	1.6
Hróarslækur *																		
Minnivallarlækur	0	0	0	0	0.0	0.0	0	0	0.0	0	0	0.0	502	70	2.4	7	0	0.0
Galatlækur	0	0	0	0	0.0	0.0	0	0	0.0	0	0	0.0	260	0	1.5	0	0	0.0
Kálfá	31	2	29	99	3.3	1.8	20	18	2.3	11	11	5.2	49	47	1.0	23	21	1.0
Fossá, Rauðá *																		
Kaldakvísl *																		
Kvíslaveita *																		
Botnsvatn *																		
Fellsendavatn *																		
Þórisvatn *																		
Veiðivötn													9334	9334	1.0	1770	1770	1.0
Þjórsá	55	0	55	220	4.0	0.5	18	18	2.9	37	37	4.5	61	31	1.5	12	9	1.5
Ápá *																		
Ölfusá	118	0	118	360	3.0	3.5	92	92	2.6	26	26	4.1	1006	1006	1.0	21	21	1.5
Hvítá	244	1	243	826	3.4	2.5	174	173	2.7	70	70	4.2	251	248	1.2	43	43	1.0
Brúará	46	1	45	174	3.8	1.3	26	25	2.7	20	20	5.2	35	35	0.8	1209	115	1.0
Tungufljót	0	0	0	0	0.0	0.0	0	0	0.0	0	0	0.0	0	0	0.0	7	7	1.0
Litla-Laxá	24	1	23	68	3.0	3.0	18	18	2.6	6	5	4.3	14	9	2.2	1	1	1.5
Stóra-Laxá	423	19	404	1446	3.6	2.3	295	283	2.8	128	121	5.4	48	47	1.2	24	24	1.2
Sog	370	11	359	1100	3.2	3.4	286	278	2.7	84	81	5.0	22	22	1.6	529	520	1.5
Ásgarðslækur	6	0	6	12	1.9	5.0	5	5	1.6	1	1	3.7	0	0	0.0	5	5	2.2
Varmá/Þorleifslækur	1	0	1	6			0	0	0.0	1	1	6.0	301	198	0.9	11	10	2.1
Hróarsholtslækur	28	0	28	77	2.8		25	25	2.4	3	3	5.7	924	810	1.0	38	38	0.7
Villingavatnsá	0	0	0	0	0.0	0.0	0	0	0.0	0	0	0.0	0	0	0.0	59	59	1.0
Hlíðarvatn	1	0	1	4	4.0		0	0	0.0	1	1	4.0	4	4	0.5	2411	2384	0.6
Suðurland Total:	5118	208	4910	15894	3.1	3.4	3952	3806		1166	1104		18012	15133		8658	7360	

* no records

Table 17 Catch of brown trout in some Icelandic rivers 1987 - 2003 migratory and stationary stocks are included.

River	Y E A R																	Average catch	Max catch	Min catch
	1987	1988	1989	1990	1991	1992	1993	1994	1995	1996	1997	1998	1999	2000	2001	2002	2003			
Laxá í Leirársveit	157	1448	194	219	221	223	180	183	153	157	116	189	239	176	209	406	179	273	1448	116
Andakflsá	4	6	1	5	0	2	1	0	3	1	7	3	4	8	4	2	67	7	67	0
Hvítá í Borgarfirði	152	190	99	192	0	149	155	364	305	722	264	583	358	924	663	486	662	369	924	0
Grímsá og Tunguá	71	49	49	74	4	216	108	357	188	30	136	213	189	250	291	313	175	160	357	4
Bverá og Kjarrá	35	80	36	99	0	121	98	109	152	247	101	247	263	463	266	258	299	169	463	0
Álftá	29	46	57	108	184	191	156	220	251	261	298	332	324	443	338	179	238	215	443	29
Hítará	5	17	14	30	23	23	39	0	34	61	33	25	30	29	28	38	36	27	61	0
Hörðudalsá	7	0	5	8	0	0	0	0	0	0	0	0	0	0	0	0	0	2	8	0
Miðá og Tunguá	0	0	0	1	0	4	0	1	0	0	0	0	0	2	2	0	0	1	4	0
Haukadalsá neðri	0	0	1	0	0	4	0	0	0	0	0	0	0	0	1	1	0	0	4	0
Haukadalsá efri	0	0	0	3	1	0	1	0	14	0	2	0	7	1	0	5	0	0	14	0
Staðarhólsá og Hvolsá	3	2	3	2	6	3	1	2	1	2	4	2	2	2	3	1	3	2	6	1
Fjarðarhornská	0	2	1	0	0	0	0	0	0	0	0	0	0	0	0	0	0	0	2	0
Selá í Steingrímsfirði	0	0	0	0	0	0	0	0	0	0	0	0	0	0	0	0	0	0	0	0
Staðará í Steingrímsfirði	0	0	0	0	1	0	0	0	0	0	0	0	0	14	0	0	0	0	14	0
Hrútafjarðará og Síká	1	1	0	2	7	1	0	0	2	1	2	0	1	0	1	2	4	1	7	0
Miðfjarðará	20	16	7	58	41	6	10	7	9	3	2	2	15	6	9	6	22	14	58	2
Viðudalsá og Fitjá	0	3	26	13	41	34	23	14	16	42	52	316	80	151	143	198	60	71	316	0
Vatnsdalsá	366	685	245	667	571	506	335	388	450	318	300	617	520	695	807	670	729	522	807	245
Fremri Laxá á Ásum	1069	2352	338	2965	4121	3911	2709	2744	2011	1301	2379	2567	2496	2980	3278	3666	3646	2620	4121	338
Húseyjarkvísl	60	7	12	426	476	483	369	540	373	349	407	373	349	397	277	559	587	356	587	7
Hrollleifsdalsá	0	0	13	7	34	102	59	53	113	32	126	86	73	81	87	75	63	126	0	0
Flókadalsá	87	27	93	111	109	54	82	0	81	29	36	169	244	263	249	419	128	419	0	0
Flijtá	0	0	3	0	10	0	0	0	0	0	1	1	0	0	1	0	1	0	10	0
Svarfaðardalsá	0	0	0	24	44	23	40	18	44	26	39	30	52	156	111	80	53	156	18	0
Hörgá	0	0	0	23	79	25	24	38	11	46	43	26	36	39	31	8	43	34	79	8
Eyjafjarðará	34	49	26	67	165	86	100	153	130	146	138	142	169	241	202	352	418	154	418	26
Fnjóská	20	8	14	14	31	25	12	45	27	31	53	25	44	22	28	40	73	30	73	8
Skjálfandaflljót	591	99	150	119	79	88	44	53	6	18	25	89	69	17	70	55	35	95	591	6
Laxá í Aðaldal	835	894	1079	1275	1465	1286	1307	705	900	594	929	1068	1232	1647	1796	1542	905	1145	1796	594
Laxá í Laxárdal	807	1075	1012	606	708	508	679	723	713	1020	1981	2099	2111	1848	1681	1703	1205	2111	508	0
Laxá í Mývatnssveit	2351	3786	3235	2186	1905	1808	1263	1558	1765	2680	5966	4214	4411	4015	2845	3388	2961	5966	1263	0
Litlárá	710	610	422	784	684	730	583	464	416	269	427	466	512	1662	922	1022	668	1662	269	0
Ormarsá	35	50	21	20	31	28	15	42	9	33	17	11	18	35	44	42	97	32	97	9
Selá í Vopnaf.	3	8	10	14	9	2	4	2	8	9	6	5	14	8	5	9	7	7	14	2
Vesturdalsá	3	1	9	5	4	4	0	6	1	1	0	0	19	2	0	0	0	3	19	0
Hofsá og Sunnudalsá	11	8	53	31	50	43	54	22	24	30	49	32	29	39	27	34	58	35	58	8
Gílsá og Selfljót	33	12	15	72	70	53	39	20	27	45	77	67	34	88	54	65	93	51	93	12
Breiðdalsá	197	31	15	148	169	245	117	307	242	306	375	214	146	143	315	285	517	222	517	15
Geirlandsá	362	303	356	193	88	109	108	118	251	235	389	274	151	237	159	193	140	216	389	88
Skaftá	442	1286	483	192	424	354	464	405	388	813	969	458	456	610	836	1498	1192	663	1498	192
Eldvatn í Meðallandi	84	170	92	35	27	38	112	129	171	192	161	215	57	53	58	78	76	103	215	27
Grenlækur	700	894	1425	1648	2640	2338	3311	3638	2730	2493	1679	1293	1264	864	1331	1189	1840	3638	700	0
Tungufljót	62	67	148	84	134	134	249	156	174	239	384	224	273	286	286	347	345	211	384	62
Heiðarvatn	0	0	215	399	301	373	284	255	116	102	212	269	277	326	609	378	410	302	609	102
Rangár og Fiská	0	0	179	163	527	359	337	230	393	635	468	487	494	547	216	772	415	772	163	0
Ölfusá	0	60	29	44	70	52	58	366	53	103	161	513	399	301	911	741	1006	304	1006	29
Sog	2	6	8	6	10	7	6	11	15	29	23	37	40	28	27	43	22	19	43	2
Hróarholtslækur	403	550	465	322	391	449	301	580	374	326	492	1011	680	765	931	949	924	583	1011	301

Table 18. Catch of Arctic charr in some Icelandic rivers 1987 - 2003 migratory and stationary stocks are included.

River	Y E A R																			Average catch	Max catch	Min catch
	1987	1988	1989	1990	1991	1992	1993	1994	1995	1996	1997	1998	1999	2000	2001	2002	2003					
Laxá í Leirársveit	0	7	7	1	4	6	18	14	21	4	35	62	42	43	124	48	24	27	7071	0		
Andakilsá	10	231	284	479	3	341	0	3	218	189	238	116	84	131	294	194	203	178	479	0		
Hvítá í Borgarfirði	27	9	15	19	613	88	106	14	12	4	4	78	11	2	886	653	601	185	886	2		
Grímsá og Tunguá	1	2	2	24	250	12	3	6	1	1	0	4	4	1	7	4	1	19	250	0		
Þverá og Kjarrá	3	9	111	76	113	14	35	25	9	7	63	2	5	8	19	13	15	31	113	2		
Álftá	0	1	2	1	4	6	10	9	2	3	6	6	0	7	0	4	2	4	10	0		
Hítará	193	134	132	234	518	396	184	0	259	131	426	7	344	146	136	129	126	206	518	0		
Hörðudalsá	18	291	231	614	451	340		271	423	361	1021	1003	453		907			491	1021	18		
Miðá og Tunguá	73	70	470	478	650	530	411	674	350	396	825	925	591	1009	593	273		520	1009	70		
Haukadalsá neðri	679	7	21	8	74	8	57	111	71	8	36	12	58	42	22	19	50	75	679	7		
Haukadalsá efri		22	14	237	919	149	267		590	739	593	892	949	731	93	644	453	486	949	14		
Staðarhólsá og Hvolsá	401	224	338	941	882	397	616	733	934	1490	1316	1469	1016	949	583	439	487	777	1490	224		
Fjarðarhornská	20	107	306	562	536	233	73	80	135	165			47		93	129	116	196	562	20		
Selá í Steingrímsfirði	261	12		627	334	259	77	404	145	356			171	246	529	0	90	68	212	529	0	
Staðará í Steingrímsfirði	584	35	13	183	385	265	254	163	201	92	164	288	76	297	275			219	584	13		
Hrútafjarðará og Síká	269	59	68	221	532	192	135	129	221	499	363	564	346	610	358	221	303	299	610	59		
Miðfjarðará	236	167	89	221	273	152	97	123	144	47	267	304	277	97	316	148	225	187	316	47		
Víðudalsá og Fitjú	1325	366	26	377	547	467	676	1214	3485	2782	1551	5568	3824	3138	1903	1143	2144	1796	5568	26		
Vatnsdalsá	727	1182	270	1642	1851	1112	1427	1058	812	2498	1861	1438	2755	2712	1919	1975	1430	1569	2755	270		
Fremri Laxá á Ásum	137	236	15	34	52	35	6	26	41	61	52	64	27	153	53	23	8	60	236	6		
Húseyjarkvísl	7	2	8	64	28	17	32	44	48	45	30	46	17	8	18	14	27	27	64	2		
Hrollleifsdalsá		47	45	221	401	410	381	628		218	198	377	325	311	281	397	409	310	628	45		
Flökadalsá	110	1028	280	2134	2198	1144	1040	1673	489	265	1135	655	2405	775	1539	1169	2279	1195	2405	110		
Fljótaá		1	44	627	643	881	1242	7071	6928	6931	1648	893	792	944	298	164	288	1837	7071	1		
Svarfaðardalsá				873		1049	668	1691	358	417	475	526	704	560	842	378	310	681	1691	310		
Hörgá				1692	1394	1238	1783	1590	1063	1245	1293	1229	856	1216	1373	1110	935	1287	1783	856		
Eyjafjarðará	1557	1467	127	2123	2836	3095	3080	3319	2151	2098	3625	3137	2900	2620	2931	1954	1678	2394	3625	127		
Fnjóská	496	217	238	390	469	239	251	550	391	339	409	579	700	612	695	370	736	452	736	217		
Skjálfandaflljót	275	338	561	391	331	160	173	198	151	214	506	403	658	1034	356	357	338	379	1034	151		
Laxá í Aðaldal	35	187	114	137	86	48	114	57	52	29	64	52	48	115	121	91	37	82	187	29		
Laxá í Laxárdal	18	0	13	8	1	4	1	2	6	18	83	3	13	3	2	8		11	83	0		
Laxá í Mývatnssveit		1	63	3	2	2	1	0	1	1	24	329	142	28	2	2	0	38	329	0		
Litlá		297	307	310	368	551	259	220	193	131	104	97	123	117	388	199	249	245	551	97		
Ormarsá	245	114	141	181	175	127	131	126	103	101	68	93	129	128	56	62	53	120	245	53		
Selá í Vopnaf.	249	56	52	211	105	103	51	106	84	164	115	37	55	72	53	49	63	96	249	37		
Vesturdalsá	506	51	78	513	1402	726	321	383	474	872	1080	457	815	864	1079	502	1002	654	1402	51		
Hofsá og Sunnudalsá	357	32	143	67	357	471	268	261	183	344	250	246	557	744	30	207	276	282	744	30		
Gilsá og Selfljót	230	61	71	455	382	368	242	381	261	532	421	221	340	375	469	426	447	334	532	61		
Breiðdalsá	453	74	70	600	22	23	410	369	977	396	197	235	415	601	1121	567	628	421	1121	22		
Geirlandsá	60	69	48	29	50	43	40	39	48	43	28	26	27	54	44	50	44	44	69	26		
Skaftá	14	28	12	23	5	7	19	28	14	21	16	56	27	107	130	33	70	36	130	5		
Eldvatn í Meðallandi	21	22	3	21	3	27	19	6	60	114	61	29	27	16	50	48	39	33	114	3		
Grenlækur		78	12	151	247	177	288	273	403	290	294	223	114	128	212	283	209	211	403	12		
Tungufljót	63	37	28	107	65	46	43	85	67	60	53	52	52	40	66	130	62	62	130	28		
Heiðarvatn			106	203	213	319	159	296	131	89	498	616	385	331	1021	188	433	333	1021	89		
Rangár og Fiská				75	65	106	90	83	94	165	150	72	54	95	88	75	89	93	165	54		
Ölfusá		8	7	12	17	12	10	72	40	20	30	21	11	16	26	26	21	22	72	7		
Sog	255	312	227	426	558	173	130	209	316	914	754	860	455	451	765	752	529	476	914	130		
Hróarholtslækur	13	134	110	144	84	172	92	136	169	360	80	113	96	55	52	84	38	114	360	13		

Table 19. Catch in nets in 2003 in numer and weight (kg).

Area River	Salmon		Brown trout		Arctic charr	
	number	weight	number	weight	number	weight
Reykjanes	0	0	0	0	0	0
Borgarfjörður netaveiði	3	9	305	305	189	189
Gufuá	408	1142	5	7	0	0
Hvítá í Borgarfirði	272	762	289	289	1650	1650
Klettakotsvaðall (Fróðárvaða	0	0	0	0	165	121
Vesturland	683	1913	599	601	2004	1960
Vestfirðir	0	0	0	0	0	0
Arnarvatn-stóra						
Sölvabakki %					18	19
Héraðsvötn	10	35	164	128	665	247
Miklavatn í Fljótum *						
Miklavatn í Skagafirði *						
Norðurland vestra	10	35	164	128	683	266
Skjálfafljót	70	256			342	169
Vestmannsvatn	7	21	5400	2430	5400	2430
Skjálftavatn *						
Sandá #	11	59				
Hölná #	11	47				
Norðurland eystra	99	383	5400	2430	5742	2599
Miðfjarðará	9	61				
Lagarfljót	14	43				
Gilsá og Selfljót			14	9	16	19
Austurland	23	104	14	0	16	19
Skaftá	40	118	321	546	113	90
Kúðafljót \$	26	91	147	394	0	0
Mjóásvatn (Álftaveri) *						
Markarfljót *						
Kvíslaveitur *						
Veiðivötn			2942	4606	1576	789
Apavatn	3	17	6259	3476	23875	7166
Laugarvatn *						
Þjórsá	3573	10519	304	474	26	28
Hvítá í Árnassýslu	1523	5026	211	211	97	97
Ölfusá	1602	4806	1400	1400	50	50
Suðurland	6767	20577	11584	11107	25737	8220
Total	7582	23012	17761	14266	34182	13064

\$ Catch in draftnets included

Broodstock fishery

* No records