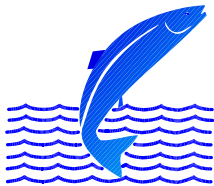


**Icelandic Salmon, Trout and Charr  
Catch Statistics 2007**

**Guðni Guðbergsson**

**May 2007**

**VMST/08024**



**VEIÐIMÁLASTOFNUN**  
Institute of Freshwater Fisheries

## CONTENTS

INTRODUCTION.....	1
METHODS.....	2
RESULTS.....	3
The catch in 2007.....	3
Age composition of the salmon catch.....	5
DISCUSSION.....	5
REFERENCES.....	7
FIGURES .....	8-12
TABLES.....	12-26

## INTRODUCTION

There are five native fish species in freshwater in Iceland. These are the salmonid species, Atlantic salmon (*Salmo salar*), brown trout (*Salmo trutta*) and arctic charr (*Salvelinus alpinus*). The other two are, European eel (*Anquilla anquilla*) and three-spined sticklebacks (*Gasterosteus aculeatus*). Of these species salmon has the highest economic value.

The fishing season in Icelandic rivers is at the maximum of 105 days in the period from 20<sup>th</sup> of May to 30<sup>th</sup> of September. In rivers where salmon fishery is mainly based on release of reared salmon smolts the fishing season can be extended to 120 days and throughout October with permission from the Fisheries Management Authorities. The daily fishing period is usually 12 hours, and the fishery must be closed for 84 hours each week. In most Icelandic rivers rod and line is the only fishing gear allowed. A fixed number of rods are used in each river as decided by the Fisheries Management Authorities. In the early 1970s when the number of rods allowed in each river was decided a rule of thumb of 1 fish/day/rod, on the average was applied. The fishing effort has remained almost unchanged since 1970. Each Fishery association needs to make a harvest plan that outlines the management strategy. The harvest plans need approval by the Fisheries Management authority after a review by the Institute of Freshwater Fisheries.

Net fishery is almost exclusively in the largest glacial rivers with salmon production in clear-water tributaries. In the net fishery gillnets are the most common fishing method and draftnet are used at few locations. The weekly net fishing period is from Tuesday morning at 10 AM to Friday evening at 10 PM. The weekend closure is to allow fish migration to the up rivers regions.

There has been a general ban on ocean salmon fishing in Icelandic waters since 1932. An exception to that were few localities in the western coast of Iceland (Vesturland) (Figure 1). At these localities coastal gillnets were used. These fishing rights were permanently bought out in 1997 by fishery associations in nearby rivers and with governmental support. This was possible since salmon caught by anglers are of much higher value than salmon caught in the net fishery. All salmon harvested in Iceland is in freshwater and mostly based on single stock fishery.

The fishing rights go with the ownership of the land adjacent to the rivers. The landowners are usually farmers. All the landowners of the fishing rights in a river system have by law to form a fishery association, which manages the exploitation of the fish stocks, within the frame

set by the law. Usually the rivers fishery association rents or leases the fishing rights to angling firms, angling clubs or directly to anglers. The entire riverbank is accessible to the limited number of rods allowed. Most rivers have fishing lodges with high quality accommodation.

The catch is recorded in special logbooks in the fishing lodges. The logbook recording system was established in 1946. At the end of the fishing season the logbooks from every river are gathered and statistical information are processed by the Institute of Freshwater Fisheries. The results are sent back to the fisheries associations as well as new logbooks before the next fishing season.

Catch statistics from Icelandic rivers for the 2007 fishing season have now been processed and the main results are summarized in this report. This work is based on Gudbergsson (2008), *Lax- og silungsveiðin 2007*, a report from the Institute of Freshwater Fisheries (in Icelandic). The salmon trout and charr statistics have been compiled this way since 1974.

## **METHODS**

Iceland is divided into statistical regions regarding to salmon catches (Figure 1). Information on the catch is summarized in tables for each region. The results from all regions are then combined for the whole country. The catch statistics for each river is summarized by fishing gear used. The harvesting methods used are rod and line, gillnets or draftnets. The number of fish released (catch and release) from the rod fisheries are recorded. In previous years ocean ranching harvest has also been summarised. However, there has not been any release of smolts for commercial ocean ranching of salmon since 1998.

By tradition, the weight of freshwater fish in Iceland was measured in pounds where 1 pound = 500 g. Before the 1999 fishing season this was changed to kg and the accuracy of 0,1 kg was anticipated. Fish length is measured to the nearest cm. For each fish, date of catch, pool name and number, bait and catch and released, as well as of the fisherman is recorded in the logbook. Fishing pools are commonly numbered in the logbooks for ease of computer processing.

The salmon catch can be divided by weight into grilse (1SW, one sea winter) and salmon (2SW, two sea winter). Males up to 4 kg and females up to 3.5 kg are grilse and larger fish are salmon. This deviation in to sea age has been confirmed with aging by scales. Salmon with

more than 2 winters at sea are rare in Iceland and repeated spawning has been in low percentages in later years.

Brown trout and Arctic charr are caught in many rivers as a by-catch with the salmon. In other rivers these are the most dominant and targeted fish species. In some rivers brown trout and Arctic charr are the dominant species at certain areas of the rivers especially at slow flowing areas at the lower parts of the rivers. In this report stationary trout and sea-trout were combined, and the same applies for sea-run Arctic charr and stationary Arctic charr.

In the rod fishery catch-and-release has been increasing in popularity and is on voluntarily basis by the anglers. In most recent years, anglers have been encouraged by the Institute of Freshwater Fisheries, the Federation of Icelandic river owners and the Association of Icelandic angling clubs to release two-sea winter salmon in order to protect the two-sea winter salmon stock component that have steadily declined in number since the mid 1980s. The catch statistics is processed for both the total catch including catch and released and the catch landed in numbers of fish and weight.

In Iceland the rod catch in few rivers is based on release of hatchery reared salmon smolts. The catch in these rivers were close to 15 thousand fish in 2007 and 33 tonnes that is close to 1/3 of the total rod catch. The catch in these rivers was recorded separately since catch figures are often used as a measure of stock abundance of wild salmon.

## **RESULTS**

### **The catch in 2007**

A total of 53.703 salmon were caught in rod fisheries in Icelandic rivers in 2007 where of 9.691 (18%) was released and the catch landed (caught and retained) was 44.012 salmon (Table 1). The catch landed was 107.999 kg by weight. In the rod fishery the catch of grilse (1SW) were 40.902 fish and 93.708 kg and 3.110 salmon (2SW) weighing 14.291 kg. Of the total number of released fish 6.673 (14,0%) were grilse and 3.614 (53,7%) salmon. Of the statistical regions the highest number of fish was caught in the rod fishery was in Sudurland region 17.949 fish where off 1.116 was released and the catch landed 16.833 fish and 41.035 kg. There were lower catch recorded in other areas (Table 1).

The catch in the net fisheries was in total 6.826 fish and 18.575 kg. The highest number of fish was caught in Suðurland region, 6.493 fish (Table 2). Of the net catch 6.160 and 15.270

kg was grilse (1SW) and 666 and 3.160 kg was salmon (2SW). There were no reports of harvest from ocean ranching in 2007.

The total combined salmon catch landed (rod and nets) in Iceland 2007 was 50.838 fish and 126.574 kg where-off 47.062 were 1SW and 3.776 2SW. The 1SW catch was 108.978 kg and 2SW catch was 17.596 kg (Table 3).

The total number of brown trout caught in rod fishery was 45.630 fish where-off 8.512 were released and the catch landed 37.118 fish and 40.821 kg (table 4). The total number of Arctic charr in rod fishery was 25.019 fish where off 1.228 was released and the catch landed 23.791 fish and 18.132 kg.

The salmon catch in 2007 increased by 8.158 fish (17,9%) from the 2006 salmon season (table 5; figure 2). The catch in 2007 was 49,1% higher than the average catch in the 33 years period from 1974 to 2006. The total salmon catch in 2007, including rod catch in rivers with the majority of the catch originating from releases of hatchery reared smolts, was the 2<sup>nd</sup> highest in the period. The salmon catch in the net fishery was 14,7% higher than the catch in 2006 but the catch was close to the half of the average catch in the period from 1974-2006 (Table 5, Figure 3).

In 2007 the rod catch in rivers where the catch is based on release of hatchery reared smolts doubled from the previous year. The catch was close to 15 thousand fish and 33 tonnes. This catch was 28% of the total rod catch in Iceland. The rod catch of wild salmon in 2007 was 38.650 fish that was close to the catch in 2006 (38.568). The total catch of wild salmon was 29.391 compared to 29.925 in 2006 (Table 5, figure 3). The total number of released wild fish was 24%.

No ocean ranching activities have been since 1998. In previous years, substantial activities of ocean ranching with Atlantic salmon was operated in Iceland reaching up to 168 thousand fish caught in 1993 (Table 5; Figure 4).

The highest number of salmon caught in rod fishery was in River Eystri-Rangá 7.497 fish with River Ytri-Rangá in second place with 5.600 fish and River Thverá and Kjarrá in third place with 2.404 salmon. The list of top 10 salmon rivers is shown in table 6. The top 3 list for catch landed was the same.

The top 10 list of brown trout is shown in table 7 and the top 10 list of Arctic charr is shown in table 8. Since 1987, the catch of brown trout has increased with record catch in 2005 (Figure 5). The catch of Arctic charr have been decreasing since 2001 (Figure 6).

The rod catch records for individual rivers are listed by statistical areas in tables 9-15. The salmon catch in most Icelandic rivers are listed in table 16 in the period from 1974-2007 including average catch, maximum and minimum catch in the period. The rod catch for brown trout from 1987-2007 is listed in table 17 and for Arctic charr in table 18.

The catch in the net fishery divided by species, rivers and regions is listed in table 19. The highest catch was in River Thjórsá with 4.002 salmon. River Thjórsá is a glacial river in Southwest Iceland.

### **Age compositions of the salmon catch**

The sea-age composition of salmon is shown in figure 7. The figure includes the rivers with yearly catch records since 1970 and includes at the average 88% of the annual salmon catch. It is worth noting that after high catch in the 1980s the catch of 1SW salmon decreased after 1979 and improved after 1985. The 2SW salmon showed similar pattern but opposite the improving catch of 1SW fish the 2SW salmon stock component have shown a steady decline since the mid 1980s. This decline in number of 2SW salmon continued in 2007. This is of major concern and anglers are kindly asked to release 2SW females in order to prevent the 2SW component from over fishing and to conserve the 2SW genetic resource in the salmon stocks. If the decline of 2SW fish continues it will be almost extinct in 2020.

Catch and release in the rod fishery has increased from 1996 when first recorded and was 18% of the total rod catch in 2007 but 23,9% of the wild salmon (Figure 8). Catch and release was 14% of the total grilse (1SW) fish but 18,9 of the wild grilse (Figure 9). The proportion of catch and release of salmon (2SW) was 53,7% in total but 57,6 of the wild fish.

## **DISCUSSION**

Since 1932 there has been a general ban on ocean fishery for salmon in Icelandic waters with the exception of few locations with coastal fishery. The number of nets used in river has been decreasing due to lease of nets and buy-out of fishing rights, by anglers and river owners. Now the fishing rights in coastal areas have been bought-out permanently with support from the government. Since the 1998 fishing season all salmon were harvested in freshwater. The number of rods allowed and used in Icelandic salmon rivers has been almost the same since

1970. With stable effort the catch can to large extent be used as an indicator for the size of the salmon run. It can also be seen from the catch statistics that the salmon catch in rivers in the same area show similar fluctuations.

The proportion of 2SW fish is usually higher in rivers in the north and northeast Iceland than in the south and southwest. Since 1981-1983 the number of 2SW salmon has been declining. This happened although the sex ratio of the run is stable with close to 65% females for MSW and 20% for 1SW for the period from 1973. That relates to higher mortality at the second year at sea in the later years (Gudbergsson and Gudjonsson 2003). The reasons for this is not clear but this seems to be connected to environmental factors in the ocean (Gudjonsson et al. 1995) that are most likely poor conditions at the feeding grounds for salmon at their second year at sea. These changes have more effects to the catch in rivers with high proportion of 2SW salmon.

There are considerable fluctuations between years in the salmon catch in Iceland. Usually salmon catch in rivers in the same region fluctuate together. The size of the salmon run depends on the number of smolts produced in each river and their survival at sea. It seems to be that common factors affect the production of smolts in the rivers in the same area and also the return rate from the ocean. Climatic factors are of greatest importance and significant correlation has been found between the catch of grilse and ocean temperature at the time the smolts are migrating in the spring or early summer (Scarnecchia 1984; Antonsson et al. 1996).

The exploitation rate in the rod fisheries, in Icelandic rivers, has been estimated to be between 30-80% (Gudjonsson 1986). Recent information on exploitation in the rod fishery indicates that it can, in some rivers, be 50-60% for 1SW salmon and 60-80% (Gudjonsson et al. 1996, Jónsson et al. 2008). In rivers with fish counters it has been shown that the rod catch reflects the changes in stock size. Further studies on exploitation and the size of the spawning stock in Icelandic salmon rivers are needed.

The numbers of brown trout increased with record catch in 2005. Catch of Arctic charr have, on the other hand been decreasing during the past five years. The reasons for the decline in catch of Arctic charr are not known but can possibly relate to global warming. This needs further studies.

Anglers are encouraged to record the trout and charr catch in the same manner as the salmon catch i.e. record each fish with information on length weight and sex of each fish. The catch



records give valuable information on fluctuation in salmon stocks and stock compositions. The catch is also an indicator on the prospects of catch in rivers and for evaluation the price of fishing licences.

The continuous decline in the 2SW salmon component is of major concern. The Institute of Freshwater Fisheries has encouraged the Fisheries associations and the authorities to stop the fishing for 2SW salmon.

## REFERENCES

Antonsson, Th., Gudbergsson, G. and Gudjónsson, S. 1996. Environmental continuity in fluctuation of fish stocks in the North Atlantic Ocean, with particular reference to Atlantic salmon. *North American Journal of Fisheries Management* 16:540-547.

Gudbergsson, G. 2007. Lax- og silungsveiðin 2006. Report from The Institute of Freshwater Fisheries, VMST-R/0609. 26 pp.

Guðni Guðbergsson og Sigurður Guðjónsson 2003. Marine mortality of Atlantic salmon in Iceland. pp 110-114. In: *Marine mortality of Atlantic salmon, Salmo salar L: methods and measures*. E.C.E. Potter, N. Ó Maolédigh and G. Chaput (Eds.) Canadian Science Advisory Secretariat. Research Document 2003/101.

Gudjónsson, Th. 1986. Exploitation of Atlantic Salmon in Iceland. In: *Atlantic Salmon: Planning for the future*. (ed.) Derik Mills and David Piggins.

Gudjónsson, S. Einarsson, S.M., Antonsson, Th. and Gudbergsson, G. 1995. Relation of grilse/salmon ratio to environmental changes in several wild stocks of Atlantic salmon (*Salmo salar*) in Iceland. *Can. J. Fish. Aquat. Sci.* 52:1385-1398.

Ingi Rúnar Jónsson, Þórólfur Antonsson og Sigurður Guðjónsson 2008. Stofnstærð lax (*Salmo salar*) og bleikju (*Salvelinus alpinus*) í samhengi við veiði. *Fræðaging landbúnaðarins*. 5:234-241.

Scarnecchia, D.L. 1984. Climatic and oceanic variations affecting yield of Icelandic stocks of Atlantic salmon. *Can. J. Fish. Aquat. Sci.*, Vol 41, pp 917-935.

Scarnecchia, D.L. 1984. Forecasting yields of two-sea-winter Atlantic salmon (*Salmo salar*) from Icelandic Rivers. *Can. J. Fish. Aquat. Sci.*, 8:1234-1240.

Scarnecchia, D.L., Isaksson, A., White, S.E. 1989. New and revised catch forecasts for two-sea-winter Atlantic salmon (*Salmo salar*) in Icelandic rivers. *J. Appl. Ichthyol.* 5:101-110.

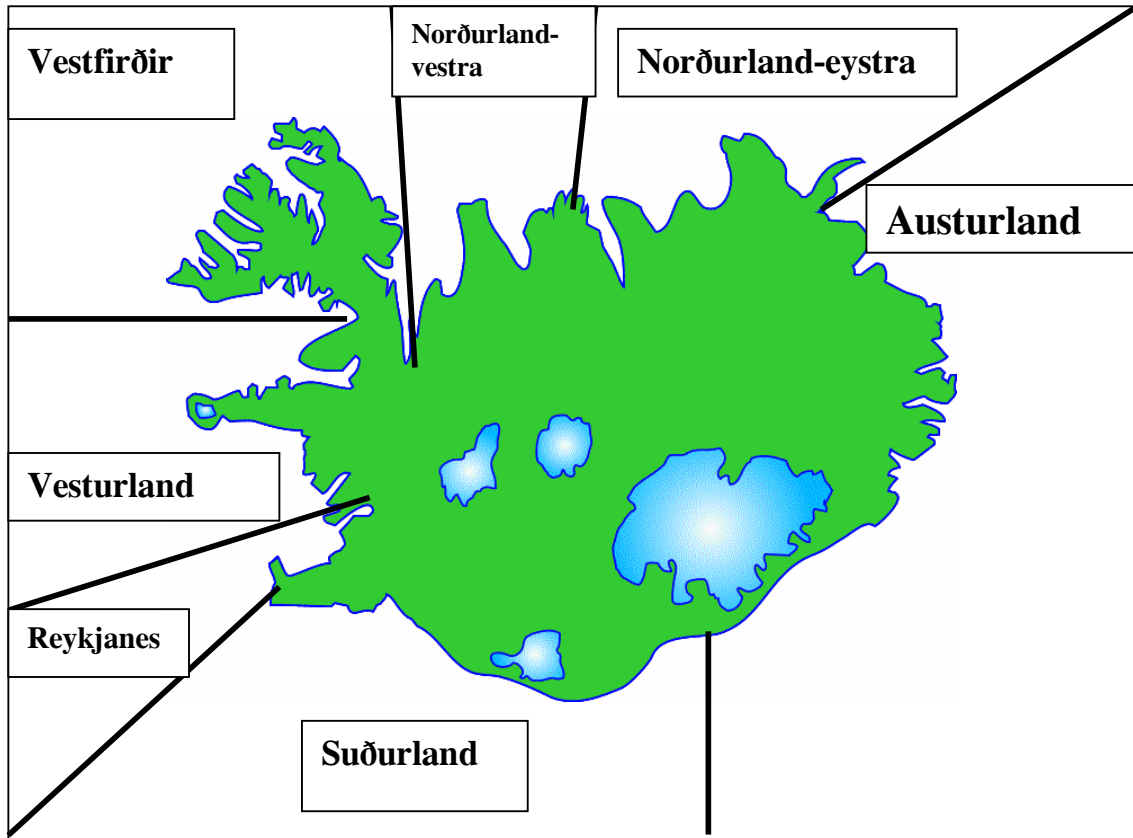


Figure 1. Statistical regions for the Atlantic salmon, brown trout and Arctic charr catch in Iceland.

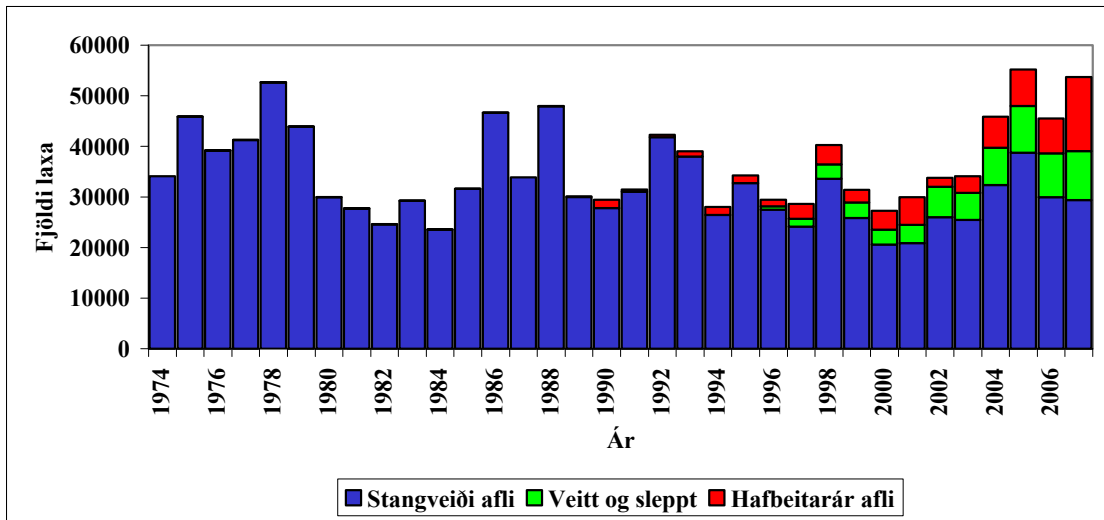


Figure 2. Salmon catch in rod and line fishery in Iceland 1974 - 2007. Catch landed, catch and released and catch in rivers with salmon fishery based mainly on smolt releases.

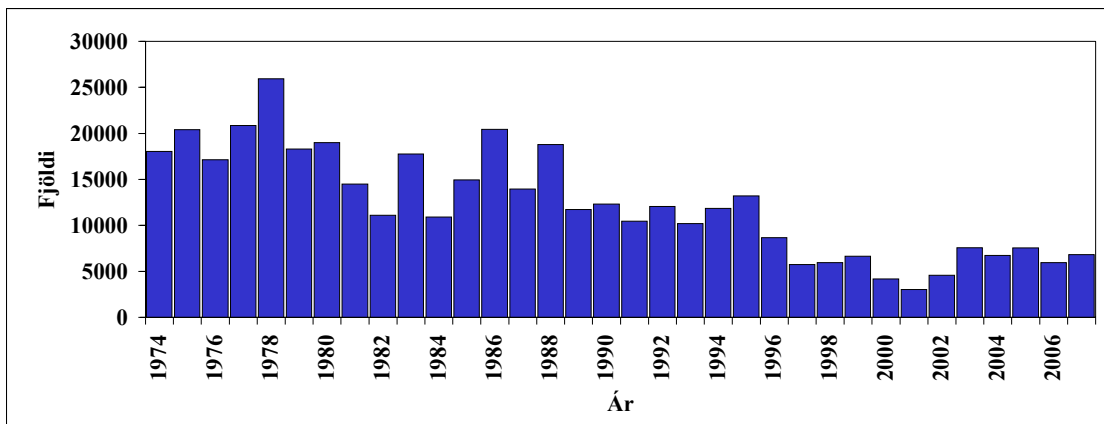


Figure 3. Salmon catch in gillnet fishery in Iceland 1974 - 2007.

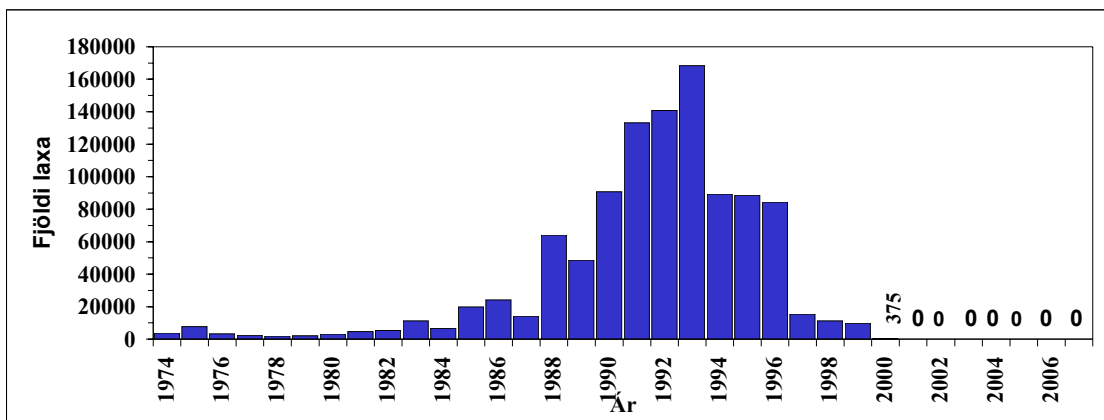


Figure 4. Salmon harvest in ocean ranching in Iceland 1974-2007.

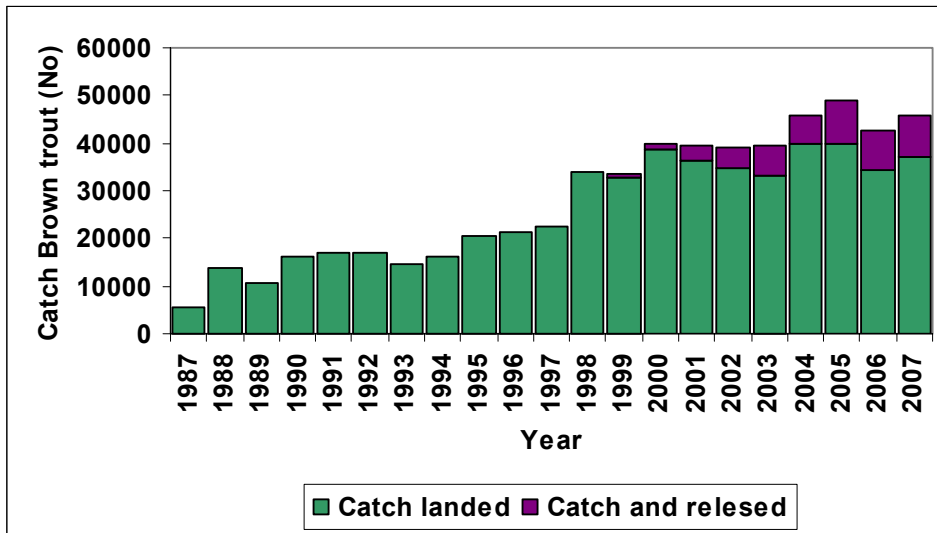


Figure 5. The catch of brown trout in the rod fishery in Iceland 1987-2007, including catch and release.

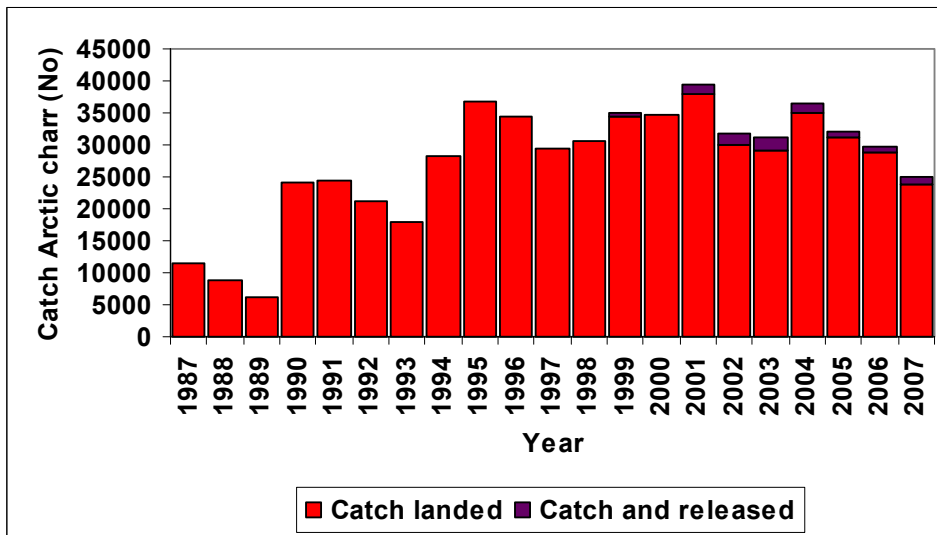


Figure 6. The catch of Arctic charr in the rod fishery in Iceland 1987-2007, including catch and release.

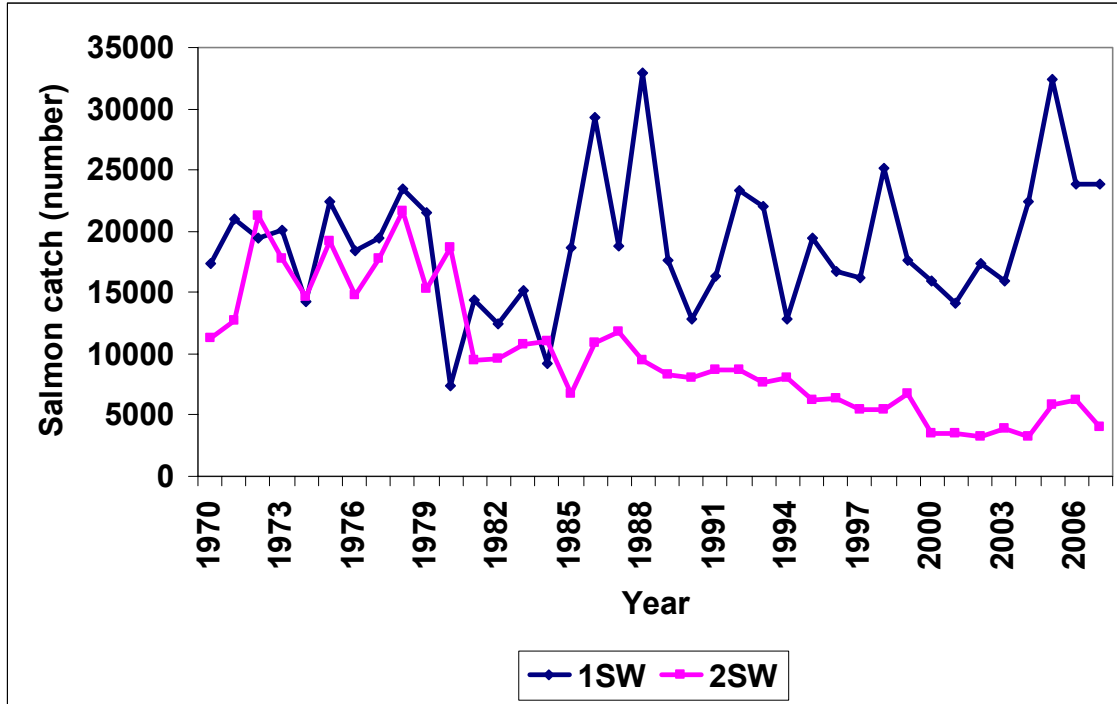


Figure 7. The sea-age composition of Atlantic salmon in rod catches in Icelandic rivers 1970-2007. The estimated number of fish from net lease and of framed origin is shown.

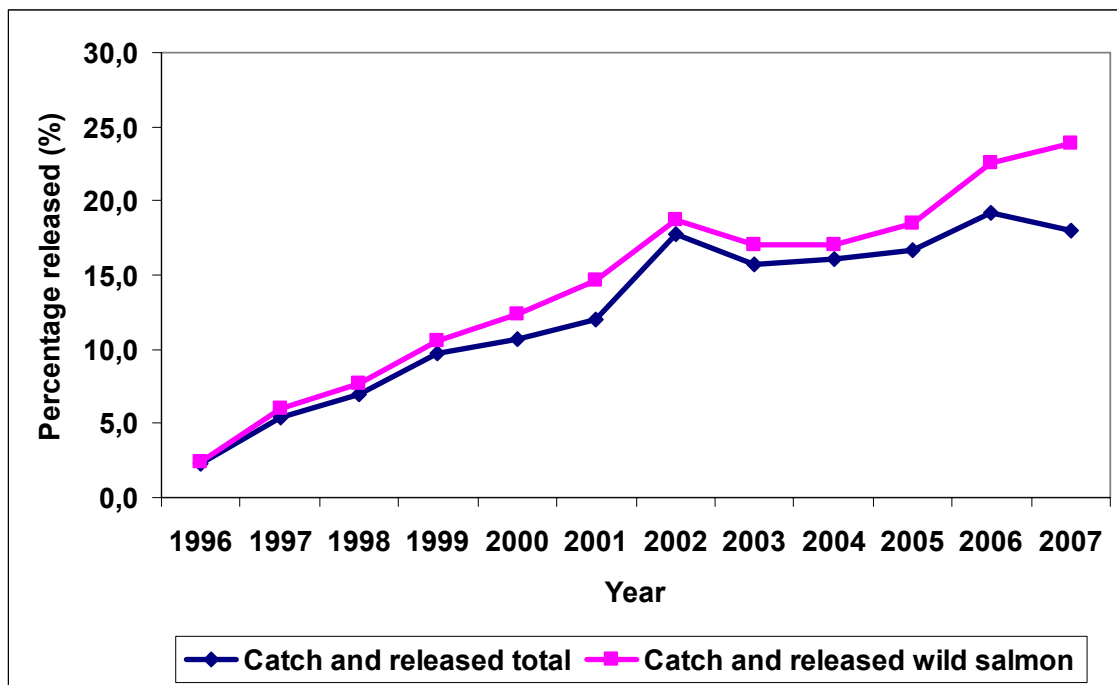


Figure 8. Percentage released fish for the rod catch in Icelandic salmon rivers in 1996-2007 for the total catch and for wild salmon only.

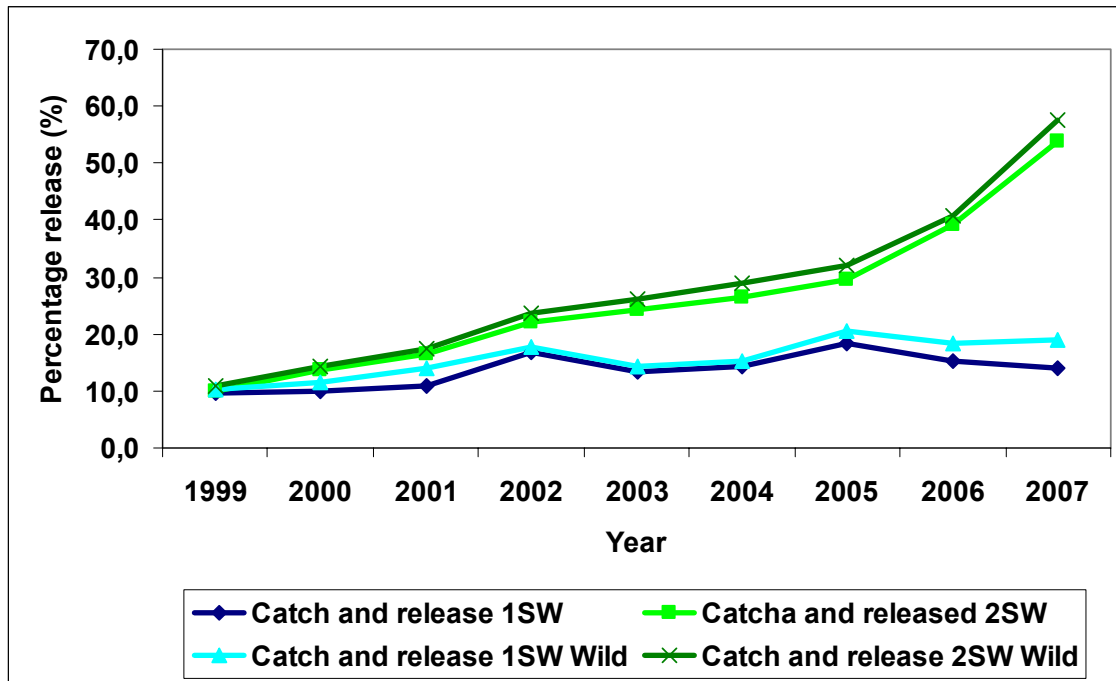


Figure 8. Percentage released fish for the rod catch in Icelandic salmon rivers in 1996-2007 for 1SW and 2SW salmon in the total catch and for wild salmon only.

Table 1. Salmon catch, rod and line, in Icelandic rivers 2007.

Region	Salmon catch, rod and line											
	Catch	Released	Released	Catch	Catch	Catch	MW	Catch	Catch	MW	Catch	
	(number)	(number)	1SW (number)	2SW (number)	landed (number)	landed (kg)	1SW number	1SW (kg)	1SW (kg)	2SW (number)	2SW (kg)	2SW (kg)
Reykjanes	2622	410	390	20	2212	4984	2142	2,23	4769	70	3,07	215
Vesturland	16421	2279	2017	151	14142	32613	13630	2,23	30395	512	4,33	2218
Vestfirðir	1286	99	77	22	1187	3002	1052	2,28	2397	135	4,48	605
Norðurland vestra	5932	1474	431	1750	4458	12020	3802	2,33	8872	656	4,80	3148
Norðurland eystra	3956	1451	910	541	2505	7105	1968	2,32	4561	537	4,74	2544
Austurland	5537	2862	1807	1055	2675	7240	2205	2,25	4957	470	4,86	2283
Suðurland	17949	1116	1041	75	16833	41035	16103	2,34	37757	730	4,49	3278
<b>Total:</b>	<b>53703</b>	<b>9691</b>	<b>6673</b>	<b>3614</b>	<b>44012</b>	<b>107999</b>	<b>40902</b>	<b>2,29</b>	<b>93708</b>	<b>3110</b>	<b>4,60</b>	<b>14291</b>

Table 2. Salmon catch, nets, in Icelandic river 2007.

Region	Salmon catch, nets						Ranched	
	Catch	Catch	Catch	Catch	Catch	Catch	Catch	
	(number)	landed (kg)	1SW number	1SW (kg)	2SW (number)	2SW (kg)	(number)	landed (kg)
Reykjanes	0	0	0	0	0	0	0	0
Vesturland	253	538	241	485	12	53	0	0
Vestfirðir	0	0	0	0	0	0	0	0
Norðurland vestra	29	70	27	62	2	8	0	0
Norðurland eystra	28	72	24	54	4	18	0	0
Austurland	23	63	20	48	3	15	0	0
Suðurland	6493	17832	5848	14621	645	3211	0	0
<b>Total:</b>	<b>6826</b>	<b>18575</b>	<b>6160</b>	<b>15270</b>	<b>666</b>	<b>3305</b>	<b>0</b>	<b>0</b>

Table 3. Total salmon catch in Icelandic rivers 2007, rod, gillnets and ranched.

Region	Salmon catch total (rod, nets and ocean ranched)						Percentage of total	
	Catch	Catch	Catch	Catch	Catch	Number	Weight	
	(number)	landed (kg)	1SW number	1SW (kg)	2SW (number)	2SW (kg)	%	%
Reykjanes	2212	4984	2142	4769	70	215	4,4	3,9
Vesturland	14395	33151	13871	30880	524	2271	28,3	26,2
Vestfirðir	1187	3002	1052	2397	135	605	2,3	2,4
Norðurland vestra	4487	12090	3829	8934	658	3156	8,8	9,6
Norðurland eystra	2533	7177	1992	4615	541	2562	5,0	5,7
Austurland	2698	7303	2225	5005	473	2298	5,3	5,8
Suðurland	23326	58867	21951	52378	1375	6489	45,9	46,5
<b>Total:</b>	<b>50838</b>	<b>126574</b>	<b>47062</b>	<b>108978</b>	<b>3776</b>	<b>17596</b>	<b>100</b>	<b>100</b>

Table 4. Catch of brown trout and Arctic charr in rod and line fishery in Icelandic river and lakes in 2007.

Region	Catch with rod and line Brown trout (sea-run and stationary)				Catch with rod and line Arctic charr (sea-run and stationary)			
	Catch	Catch and	Catch	Catch	Catch	Catch and	Catch	Catch
	(number)	released	landed (number)	landed (kg)	(number)	released	landed (number)	landed (kg)
Reykjanes	2029	62	1967	1135	142	2	140	49
Vesturland	2181	151	2030	2249	1796	64	1732	1403
Vestfirðir	100	0	100	97	1661	142	1519	669
Norðurland vestra	7477	1750	5727	4083	4058	86	3972	3772
Norðurland eystra	11975	4728	7247	8953	3058	373	2685	2895
Austurland	753	73	680	589	2437	271	2166	1802
Suðurland	21115	1748	19367	23715	11867	290	11577	7542
<b>Total</b>	<b>45630</b>	<b>8512</b>	<b>37118</b>	<b>40821</b>	<b>25019</b>	<b>1228</b>	<b>23791</b>	<b>18132</b>

**Table 5.** The salmon catch in Iceland 1974-2007 in numbers of fish. Total rod catch, rod catch landed, catch and release, catch in rivers with rod catch based mainly on smolt releases, net catch, harvest in Ocean ranching and total catch of salmon as well as the percentage of released fish.

Year	Rod catch	Catch landed	Catch and release	Catch and release total (%)	Ranched rod catch	Catch and release Ranched rod	Catch landed Ranched rod	Rod catch wild salmon number	Rod catch landed Wild salmon	Catch and release Wild salmon	Catch and release Wild (%)	Net catch landed	Rod and net catch total	Ocean ranched harvest	Total catch
1974	34107	34107			29		29	34078	34078	0	0	18044	52151	3765	55916
1975	45882	45882			57		57	45825	45825	0	0	20402	66284	7720	74004
1976	39249	39249			95		95	39154	39154	0	0	17130	56379	3247	59626
1977	41302	41302			46		46	41256	41256	0	0	20864	62166	2405	64571
1978	52679	52679			82		82	52597	52597	0	0	25946	78625	1953	80578
1979	43955	43955			98		98	43857	43857	0	0	18306	62261	1967	64228
1980	30007	30007			65		65	29942	29942	0	0	18992	48999	3138	52137
1981	27777	27777			80		80	27697	27697	0	0	14478	42255	4626	46881
1982	24671	24671			65		65	24606	24606	0	0	11107	35778	5340	41118
1983	29267	29267			22		22	29245	29245	0	0	17761	47028	11194	58222
1984	23582	23582			10		10	23572	23572	0	0	10912	34494	6595	41089
1985	31621	31621			17		17	31604	31604	0	0	14942	46563	19750	66313
1986	46671	46671			78		78	46593	46593	0	0	20437	67108	24100	91208
1987	33907	33907			32		32	33875	33875	0	0	13960	47867	14140	62007
1988	47979	47979			53		53	47926	47926	0	0	18781	66760	64017	130777
1989	30082	30082			80		80	30002	30002	0	0	11738	41820	48617	90437
1990	29443	29443			1622		1622	27821	27821	0	0	12339	41782	90726	132508
1991	31492	31492			453		453	31039	31039	0	0	10454	41946	133203	175149
1992	42309	42309			521		521	41788	41788	0	0	12062	54371	140763	195134
1993	39025	39025			1041		1041	37984	37984	0	0	10197	49222	168427	217649
1994	28042	28042			1576		1576	26466	26466	0	0	11846	39888	89225	129113
1995	34241	34241			1523		1523	32718	32718	0	0	13185	47426	88527	135953
1996	29436	28767	669	2,3	1298	0	1298	28138	27469	669	2,4	8668	37435	84365	121800
1997	28640	27082	1558	5,4	2960	5	2955	25680	24127	1553	6,0	5735	32817	15248	48065
1998	40286	37460	2826	7,0	3848	16	3832	36438	33628	2810	7,7	5939	43399	11223	54622
1999	31438	28383	3055	9,7	2536	2	2534	28902	25849	3053	10,6	6657	35040	9648	44688
2000	27257	24339	2918	10,7	3744	24	3720	23513	20619	2894	12,3	4170	28509	375	28884
2001	29943	26332	3611	12,1	5466	25	5441	24477	20891	3586	14,7	3043	29375	0	29375
2002	33767	27782	5985	17,7	1791	31	1760	31976	26022	5954	18,6	4583	32365	0	32365
2003	34111	28750	5361	15,7	3443	165	3278	30668	25472	5196	16,9	7582	36332	0	36332
2004	45831	38469	7362	16,1	6285	165	6120	39546	32349	7197	18,2	6742	45211	0	45211
2005	55168	45944	9224	16,7	7413	228	7185	47755	38759	8996	18,8	7560	53504	0	53504
2006	45545	36810	8735	19,2	6977	92	6885	38568	29925	8643	22,4	5953	42763	0	42763
2007	53703	44012	9691	18,0	15053	432	14621	38650	29391	9259	24,0	6826	50838	0	50838
<b>1974 - 2006 Average</b>	<b>36022</b>	<b>34467</b>	<b>4257</b>	<b>11,3</b>	<b>1451</b>	<b>66</b>	<b>1596</b>	<b>34403</b>	<b>32871</b>	<b>4596</b>	<b>13,5</b>	<b>12275</b>	<b>46907</b>	<b>31009</b>	<b>78855</b>



Table 6. Top 10 lists of salmon rivers in 2007 including catch landed and catch and released and for catch landed only.

No	River	Salmon Catch <sup>1</sup>	No	River	Catch landed
1	Eystri-Rangá	7497	1	Eystri-Rangá	7193
2	Ytri-Rangá	5600	2	Ytri-Rangá	5488
3	Þverá og Kjarrá	2404	3	Þverá og Kjarrá	2191
4	Selá í Vopnafirði	2227	4	Langá	1252
5	Langá	1456	5	Hvítá í Borgarfirði	1229
6	Norðurá	1447	6	Laxá í Dölum	1135
7	Hofsá og Sunnudalsá	1423	7	Norðurá	1103
8	Hvítá í Borgarfirði	1238	8	Blanda	1077
9	Laxá í Dölum	1145	9	Miðfjarðará	983
10	Miðfjarðará	1132	10	Ellidáur	850

<sup>1</sup> Includes catch landed and catch and released

Table 7. Top 10 list of river or lakes with brown trout in 2007 including both migratory and stationary fish stocks.

No	River or Lake	Brown trout catch
1	Veiðivötn	13272
2	Fremri Laxá á Ásum	4549
3	Laxá í Mývatnssveit	4354
4	Reykjadalsá	2157
5	Vatnsdalsá	1509
6	Laxá í Laxárdal	1437
7	Meðalfellsvatn	1329
8	Laxá í Aðaldal	1125
9	Hróarsholtslækur	980
10	Steinsmýrarvötn	843

Table 8. Top 10 list of river or lakes with Arctic charr in 2007 including both migratory and stationary fish stocks.

No	River or Lake	Arctic charr catch
1	Veiðivötn	8406
2	Víðidalsá og Fitjá	1725
3	Hlíðarvatn	1480
4	Vatnsdalsá	1000
5	Hörgá	860
6	Gufudalsá	737
7	Norðfjarðará	617
8	Eyjafjarðará	610
9	Fnjóská	598
10	Skógaá	586

**Table 9.** Number and weight in the rod catch in Reykjanes in 2007. Total catch, catch landed, mean weight, grilse/salmon ratio of Atlantic salmon, brown trout and Arctic charr (MW = mean weight (kg)).

River	Salmon					Grilse (1SW)			Salmon (2SW)			Brown trout			Arctic charr		
	Catch	Released	Catch landed	Weight landed	MW	Catch	Landed	Weight Landed	Catch	Landed	MW	Catch	Landed	MW	Catch	Landed	MW
Elliðaár	936	86	850	1987	2,3	923	837	2,3	13	13	4,3	0	0	0,0	0	0	0,0
Elliðavatn	3	0	3	6	2,0	3	3	2,0	0	0	0,0	300	300	0,6	19	19	0,5
Úlfarsá (Korpa)	210	21	189	395	2,1	207	186	2,1	3	3	3,7	59	59	1,7	1	1	0,8
Leirvogsa	379	7	372	751	2,0	378	372	2,0	1	0	4,0	119	107	1,2	4	3	0,7
Kiðafellsá	19	0	19	48	2,5	19	19	2,5	0	0	0,0	10	10	1,5	0	0	0,0
Laxá í Kjós	623	142	481	1102	2,5	574	440	2,3	49	41	2,3	195	153	1,9	1	1	0,5
Bugða	180	145	35	88	2,6	167	33	2,5	13	2	4,5	0	0	0,0	0	0	0,0
Meðalfellsvatn	34	0	34	74	2,2	34	34	2,2	0	0	0,0	1329	1321	0,3	116	115	0,3
Brynjudalsá	164	2	162	376	2,3	156	154	2,2	8	8	4,0	10	10	1,2	0	0	0,0
Botnsá	74	7	67	157	2,3	71	64	2,3	3	3	4,3	7	7	1,7	1	1	2,0
Djúpavatn *																	
<b>Reykjanes total:</b>	<b>2622</b>	<b>410</b>	<b>2212</b>	<b>4984</b>		<b>2532</b>	<b>2142</b>		<b>90</b>	<b>70</b>		<b>2029</b>	<b>1967</b>		<b>142</b>	<b>140</b>	

\* no records

**Table 10.** Number and weight in the rod catch in Vesturland in 2007. Catch, landed, mean weight, grilse/salmon ratio of Atlantic salmon, brown trout and Arctic charr (MW = mean weight (kg)).

River	Salmon					Grilse (1SW)			Salmon (2SW)			Brown trout			Arctic charr		
	Catch	Released	Catch landed	Weight landed	MW	Catch	Landed	Weight Landed	Catch	Landed	MW	Catch	Landed	MW	Catch	Landed	MW
Vötn í Svinadal	4	0	4	8	1,9	4	4	1,9	0	0	0,0	118	118	0,8	20	20	1,0
Selós og Þverá	121	1	120	282	2,3	116	115	2,2	5	5	4,3	80	8	1,2	0	0	1,0
Laxá í Leirársveit	820	105	715	1652	2,3	797	701	2,3	23	14	4,5	75	72	1,7	8	8	1,4
Leirá í Leirársveit *																	
Hafnará	86	0	86	191	2,2	83	83	2,1	3	3	4,2	0	0	0,0	0	0	0,0
Hvítá efri hl. og Norðlingafll.*																	
Hvítá í Borg. Neðrihl.	29	0	29	70	2,4	27	27	2,3	2	2	4,4	54	54	1,1	8	8	1,2
Hvítá í Borgarfirði &	1238	9	1229	2950	2,4	1176	1170	2,3	62	59	4,4	495	481	1,1	26	26	1,2
Gufuá	103	0	103	234	2,3	101	101	2,2	2	2	4,0	53	53	0,6	2	2	0,5
Andakilsá	246	16	230	562	2,4	238	222	2,4	8	8	6,0	6	6	0,9	28	28	0,7
Grimsó og Tunguá	1110	308	802	1802	2,2	1072	784	2,2	38	18	4,3	174	164	1,4	6	3	1,5
Flókadalsá	438	4	434	980	2,3	426	423	2,2	12	11	3,9	5	5	1,2	0	0	0,0
Reykjadalsá	194	2	192	459	2,4	188	187	2,3	6	5	3,9	15	15	0,9	3	3	1,8
Þverá og Kjarrá	2404	213	2191	5221	2,4	2272	2100	2,3	132	91	4,4	89	87	1,4	1	1	0,7
Norðurá	1447	344	1103	2350	2,1	1411	1088	2,1	36	15	4,6	116	112	1,2	22	20	1,4
Norðlingaflljót	638	31	607	1364	2,2	624	594	2,2	14	13	4,4	9	9	1,5	0	0	0,0
Gljúfurá	220	7	213	455	2,1	215	208	2,1	5	5	4,3	43	43	0,9	0	0	0,0
Langá	1456	204	1252	2664	2,1	1436	1236	2,1	20	16	4,4	2	2	2,0	0	0	0,0
Urrðoá	45	1	44	102	2,3	45	44	2,3	0	0	0,0	70	67	1,3	1	1	0,5
Álfhá og Veita	210	11	199	496	2,5	193	185	2,4	17	14	3,8	211	211	1,2	0	0	0,0
Hítará	563	31	532	1234	2,3	543	515	2,2	20	17	4,4	13	13	1,3	58	57	1,2
Hafjarðará	1079	767	312	774	2,7	933	301	2,4	146	11	4,7	113	75	0,9	66	39	1,1
Núpá í Eyjahreppi *			0														
Laxá í Miklaholtshr.*			0														
Straumfjarðará	451	48	403	957	2,4	431	389	2,3	20	14	4,5	90	90	1,2	34	34	0,6
Vatnasvæði Lýsu *			0														
Staðará *																	
Bakká	18	0	18	40	2,2	18	18	2,2	0	0	0,0	163	162	0,8	99	92	0,6
Grishólsá	2	0	2	3	1,6	2	2	1,6	0	0	0,0	53	53	0,6	46	46	0,5
Örlygsstaðaa-Kársst.	41	0	41	94	2,3	41	41	2,3	0	0	0,0	16	16	1,6	22	16	0,8
Fróða	114	78	36	84	2,2	112	35	2,2	2	1	4,7	3	3	0,7	39	39	0,9
Valshamarsá	14	0	14	25	1,8	14	14	1,8	0	0	0,0	13	13	0,8	0	0	0,0
Setbergsá	20	0	20	37	1,8	20	20	1,8	0	0	0,0	0	0	0,0	1	1	0,5
Stóra-Langadalsá	13	2	11	26	2,8	10	8	2,4	3	3	2,4	15	15	1,6	51	51	1,0
Laxá á Skógarströnd	70	0	70	136	1,9	70	70	1,9	0	0	0,0	18	18	0,9	1	1	1,5
Svinafossá	3	1	2	4	2,0	3	2	2,0	0	0	0,0	7	4	1,0	2	2	0,6
Dunká	106	0	106	247	2,3	101	101	2,2	5	5	4,3	0	0	0,0	0	0	0,0
Hörödalsá *			0														
Skrauma *																	
Miða og Tunguá	134	0	134	335	2,5	114	114	2,2	20	20	4,2	0	0	0,0	328	327	0,9
Haukadalsá neðri	640	34	606	1418	2,4	605	575	2,2	35	31	4,2	0	0	0,0	17	17	0,6
Haukadalsá efri	34	1	33	81	2,5	29	29	2,3	5	4	3,9	5	5	0,4	240	225	0,7
Laxá í Dölum	1145	10	1135	2693	2,4	1096	1087	2,3	49	48	4,3	4	4	1,3	12	12	0,9
Ljá	9	0	9	21	2,3	9	9	2,3	0	0	0,0	9	9	0,9	6	6	0,4
Ljárskógarvötn *			0														
Fáskrúð	322	30	292	703	2,4	302	273	2,3	20	19	4,3	1	1	2,2	3	3	0,9
Glerá	46	0	46	97	2,4	42	42	2,2	4	4	4,0	0	0	0,0	0	0	0,0
Laxá í Hvammssveit	58	4	54	113	2,1	56	52	2,1	2	2	4,0	0	0	0,0	7	7	0,7
Flekkudalsá	174	5	169	364	2,2	169	165	2,1	5	4	3,7	16	16	1,3	4	4	0,7
Krossá	106	1	105	211	2,0	100	99	1,9	6	6	3,7	18	17	0,6	85	85	0,4
Búðardalsá	322	11	311	735	2,4	295	289	2,2	27	22	4,3	7	7	1,4	1	1	2,0
Staðarhólsá og Hvolsá*	128	0	128	339	2,7	108	108	2,3	20	20	4,4	2	2	0,5	549	547	0,8
<b>Vesturland total:</b>	<b>16421</b>	<b>2279</b>	<b>14142</b>	<b>32613</b>		<b>15647</b>	<b>13630</b>		<b>774</b>	<b>512</b>		<b>2181</b>	<b>2030</b>		<b>1796</b>	<b>1732</b>	

\* No records

& Hvítá í Borgarfirði, Brenna, Svarthöfði, Straumar, Skuggi, Ferjukot-Norðurkot.

**Table 11.** Number and weight in the rod catch in Vestfirðir 2007. Catch, landed, mean weight, grilse/salmon ratio of Atlantic salmon, brown trout and Arctic charr (MW = mean weight (kg)).

River	Salmon					Grilse (1SW)			Salmon (2SW)			Brown trout			Arctic charr		
	Catch	Released	Catch landed	Weight landed	MW	Catch	Landed	Weight Landed	Catch	Landed	MW	Catch	Landed	MW	Catch	Landed	MW
Gufudalsá	10	0	10	28	2,7	9	9	2,6	1	1	4,0	10	10	0,7	737	709	0,5
Þorskafjarðará	33	0	33	75	2,3	31	31	2,2	2	2	4,2	2	2	1,0	203	139	0,6
Fjarðarhornská	111	0	111	250	2,2	103	103	2,1	8	8	4,2	6	6	0,9	184	174	0,6
Skálmardalsá	0	0	0	0	0,0	0	0	0,0	0	0	0,0	0	0	0,0	366	345	0,5
Mórudalsá *																	
Suðurfossá *																	
Botnsá *																	
Heydalsá *																	
Langadalsá	226	6	220	528	2,4	204	198	2,2	22	22	4,4	1	1	1,0	15	15	0,9
Ísafjarðará	26	1	25	74	3,0	19	19	2,5	7	6	4,4	0	0	0,0	4	4	0,6
Laugardalsá	229	13	216	540	2,5	205	195	2,3	24	21	4,5	79	79	1,0	0	0	0,0
Laugarbólsvatn	17	0	17	43	2,5	17	17	2,5	0	0	0,0	0	0	0,0	0	0	0,0
Hvannadalsá	136	14	122	315	2,6	125	112	2,4	11	10	4,5	0	0	0,0	8	8	1,1
Selá í Ísafjarðardjúpi			0												10	10	1,0
Þjarnarfjarðará*			0														
Selá í Steingrímsf.	78	1	77	237	3,1	54	53	2,5	24	24	4,3	0	0	0,0	81	74	0,9
Staðará í Steing. *	11	4	7	22	3,4	7	5	2,9	4	2	4,3	1	1	1,7	12	4	1,0
Miðdalsá *																	
Víðidalsá í Steingr.	147	0	147	407	2,8	120	120	2,3	27	27	4,7	0	0	0,0	17	17	0,5
Hrófá	61	1	60	145	2,4	56	55	2,2	5	5	4,4	0	0	0,0	4	4	0,9
Prestbakkaá	28	5	23	53	2,3	27	23	2,3	1	0	0,0	1	1	1,0	1	0	0,0
Krossá	76	0	76	186	2,4	70	70	2,2	6	6	5,3	0	0	0,0	4	4	0,5
Vikurá	83	54	29	69	2,9	69	29	2,4	14	0	5,4	0	0	0,0	14	11	0,6
Laxá í Hrútafirði	14	0	14	30	2,2	13	13	2,0	1	1	3,8	0	0	0,0	1	1	0,8
<b>Vestfirðir total:</b>	<b>1286</b>	<b>99</b>	<b>1187</b>	<b>3002</b>	<b>2,5</b>	<b>1129</b>	<b>1052</b>		<b>157</b>	<b>135</b>		<b>100</b>	<b>100</b>		<b>1661</b>	<b>1519</b>	

\* No records.

**Table 12.** Number and weight in the rod catch in Nordurland vestra 2007. Catch, landed, mean weight, grilse/salmon ratio of Atlantic salmon, brown trout and Arctic charr (MW = mean weight (kg)).

River	Salmon					Grilse (ISW)			Salmon (2SW)			Brown trout			Arctic charr		
	Catch	Released	Catch landed	Weight landed	MW	Catch	Landed	Weight Landed	Catch	Landed	MW	Catch	Landed	MW	Catch	Landed	MW
Hrútafjarðará og Siká	431	34	397	991	2,5	397	370	2,3	34	27	4,9	2	2	1,5	100	97	1,2
Tjarnará	37	0	37	85	2,3	33	33	2,1	4	4	4,2	0	0	0,0	57	57	1,0
Hamarsá	6	1	5	9	1,9	6	5	1,9	0	0	0,0	0	0	0,0	35	35	0,6
Miðfjarðará	1132	149	983	2525	2,6	984	880	2,3	148	103	4,9	41	41	1,1	61	58	0,9
Arnarv.-Stóra og Austurá *			0														
Viðisdalsá og Fitjá	728	64	664	1864	2,8	608	561	2,4	120	103	5,1	291	291	1,3	1725	1720	1,1
Vatnsdalsá	853	761	92	359	3,9	534	58	2,6	319	34	5,8	1509	1467	1,0	1000	956	0,8
Giljá %			0														
Gjúfurá	118	8	110	304	2,8	103	98	2,6	15	12	4,3	4	4	1,5	10	6	1,4
Laxá á Ásum	536	126	410	962	2,4	514	402	2,3	22	8	4,4	5	5	1,2	0	0	0,0
Fremri Laxá á Ásum	16	0	16	36	2,2	15	15	2,1	1	1	4,0	4549	3166	0,4	3	3	0,2
Blanda	1107	30	1077	3047	2,8	858	832	2,3	249	245	4,7	33	33	1,5	81	81	1,4
Svartá	301	45	256	700	2,7	251	212	2,3	50	44	4,8	25	24	1,5	2	2	1,5
Langavatn á Refas.*			0														
Seyðisá *			0														
Blöndulón *			0														
Laxá á Refasveit	208	3	205	569	2,8	166	166	2,3	42	39	4,8	10	10	1,0	1	1	0,5
Hallá *			0														
Laxá í Nesjum	17	0	17	61	3,6	11	11	2,6	6	6	5,3	0	0	0,0	0	0	0,0
Fossá á Skaga	30	0	30	98	3,2	22	22	2,8	8	8	4,7	5	5	1,0	3	3	0,8
Laxá á Skaga #			0														
Húseyjarkvisl	161	156	5	15	2,9	130	5	2,4	31	0	0,0	597	273	1,4	14	7	1,0
Sæmundará	141	14	127	330	3,0	118	108	2,5	23	19	2,5	51	51	1,4	188	188	0,7
Norðurá í Skagafirði *			0														
Héraðsvötn *			0														
Hjaltadalsá og í *			0														
Hofsá, Unadalsá	1	0	1	3	2,5	1	1	2,5	0	0	0,0	3	3	1,3	38	36	1,0
Grafará *			0														
Hrollleifsdalsá	8	0	8	26	3,2	5	5	2,5	3	3	4,7	170	170	1,0	152	152	0,7
Flókadalsá og vötn	11	0	11	23	2,1	11	11	2,1	0	0	0,0	181	181	1,0	380	374	0,6
Fljótaá	90	83	7	14	2,7	78	7	2,4	12	0	0,0	1	1	2,0	208	196	1,2
<b>Norðurland vestra total</b>	<b>5932</b>	<b>1474</b>	<b>4458</b>	<b>12020</b>		<b>4845</b>	<b>3802</b>		<b>1087</b>	<b>656</b>		<b>7477</b>	<b>5727</b>		<b>4058</b>	<b>3972</b>	

\* No records

% Recorded with River Vatnsdalsá

**Table 13.** Number and weight in the rod catch in Nordurland eystra 2007. Catch, landed, mean weight, grilse/salmon ratio of Atlantic salmon, brown trout and Arctic charr (MW = mean weight (kg)).

River	Salmon					Grilse (1SW)			Salmon (2SW)			Brown trout			Arctic charr		
	Catch	Released	Catch landed	Weight landed	MW	Catch	Landed	Weight Landed	Catch	Landed	MW	Catch	Landed	MW	Catch	Landed	MW
Olafsfjarðará *																	
Svarfaðardalsá *																	
Þorvaldsdalsá *																	
Hörgá	3	0	3	6	2,0	3	3	2,0	0	0	0	95	95	1,0	860	860	1,0
Eyjafjarðará	2	0	2	4	2,1	2	2	2,1	0	0	0,0	116	108	1,4	610	499	1,1
Fnjóská	346	17	329	988	3,0	258	246	2,4	88	83	4,9	42	42	1,5	598	563	1,2
Bakkaá í Fnjóskadal	0	0	0	0	0,0	0	0	0,0	0	0	0,0	18	18	1,2	61	61	1,2
Djúpá	100	10	90	254	2,8	84	77	2,5	16	13	4,6	0	0	0,0	0	0	0,0
Skjálfandafliót A-deild	747	3	744	1964	2,6	609	608	2,2	138	136	4,6	171	116	0,9	292	292	0,6
Skjálfandafliót B-deild												72	40	1,1	2	0	0,0
Laxá í Aðaldal	1055	933	122	428	3,5	741	91	2,8	314	31	5,4	1125	691	1,1	25	13	1,3
Laxá í Laxárdal												1437	933	1,6	2	2	2,1
Laxá í Mývatnssveit												4354	2430	1,4	0	0	0,0
Laxá í Mýv. Haganes												340	302	1,2	3	3	1,9
Arnarvatnsá og Helluvaðsá												778	52	0,8	2	0	0,0
Kráká												59	20	1,0	5	5	1,0
Reykjadalsá	43	21	22	57	2,6	27	22	2,6	16	0	0,0	2157	1790	0,8	116	113	0,6
Mýrarkvisl	49	21	28	67	2,6	43	26	2,4	6	2	4,4	207	70	1,0	0	0	0,0
Litlaá	9	1	8	21	3,0	8	8	2,6	1	0	6,1	619	273	1,5	67	29	1,4
Skjálftavatn *			0														
Brunná	0	0	0	0	0,0	0	0	0,0	0	0	0,0	38	10	2,0	229	61	1,3
Deildará	257	13	244	588	2,5	232	228	2,2	25	16	4,6	119	119	2,7	62	61	3,1
Ormarsá	182	27	155	438	3,0	126	120	2,4	56	35	4,5	79	79	1,0	69	68	1,1
Svalbarðsá	302	175	127	338	3,1	202	104	2,4	100	23	4,7	9	9	1,5	19	19	1,7
Sandá	268	139	129	408	3,6	161	88	2,5	107	41	5,1	3	3	1,2	2	2	1,1
Hafralónsá	481	86	395	1260	3,2	300	265	2,3	181	130	4,7	4	3	1,3	32	32	1,3
Kverká	11	2	9	23	3,3	7	7	1,9	4	2	5,6	3	3	1,2	0	0	0,0
Hölná	101	3	98	261	2,7	75	73	2,1	26	25	4,2	4	4	2,1	0	0	0,0
Bakkaá( Sandvík) *			0														
Lónsá og Sauðanesá	0	0	0	0	0,0	0	0	0,0	0	0	0,0	126	37	0,8	2	2	1,2
<b>Norðurland eystra total:</b>	<b>3956</b>	<b>1451</b>	<b>2505</b>	<b>7105,2</b>		<b>2878</b>	<b>1968</b>		<b>1078</b>	<b>537</b>		<b>11975</b>	<b>7247</b>		<b>3058</b>	<b>2685</b>	

\* no records

**Table 14.** Number and weight in the rod catch in Austurland 2007. Catch, landed, mean weight, grilse/salmon ratio of Atlantic salmon, brown trout and Arctic charr (MW = mean weight (kg)).

River	Salmon					Grilse (1SW)			Salmon (2SW)			Brown trout			Arctic charr		
	Catch	Released	Catch landed	Weight landed	MW	Catch	Landed	Weight Landed	Catch	Landed	MW	Catch	Landed	MW	Catch	Landed	MW
Miðfjarðá og Kverká	198	8	190	565	3,0	140	135	2,2	58	55	4,8	4	4	1,1	1	1	0,5
Gæsaflá og Bakkaá	25	2	23	60	2,6	23	22	2,5	2	1	4,7	0	0	0,0	0	0	0,0
Selá í Vopnafirði	2227	1382	845	2423	3,1	1477	627	2,2	750	218	4,8	4	4	1,0	33	24	1,3
Vesturdalsá	158	68	90	215	2,6	129	81	2,2	29	9	4,7	0	0	0,0	241	222	0,6
Hofsá	1364	864	500	1290	3,2	900	433	2,2	464	67	5,1	130	115	1,1	247	209	0,9
Sunnudalsá	59	43	16	36	2,8	42	15	1,9	17	1	4,8	0	0	0,0	0	0	0,0
Fögruhlíðará	20	1	19	41	2,2	20	19	2,2	0	0	0,0	33	13	0,9	204	177	0,9
Kaldá	102	31	71	150	2,2	100	71	2,1	2	0	0,0	16	16	1,5	121	92	1,0
Gilsá og Selfjót	103	0	103	249	2,4	94	94	2,2	9	9	4,8	215	215	0,8	310	310	0,8
Kelduá *																	
Fjarðará, Borgarf.	63	4	59	121	2,0	60	56	1,9	3	3	3,9	1	1	0,5	40	35	0,9
Fjarðará, Seyðisfirði	14	0	14	48	3,4	9	9	2,4	5	5	5,2	0	0	0,0	68	67	0,9
Norðfjarðará	32	0	32	76	2,4	31	31	2,3	1	1	3,5	1	1	0,3	617	569	0,9
Fjarðará, Loðmundarf.	41	16	25	53	2,2	36	25	2,1	5	0	0,0	3	3	0,7	147	91	0,7
Sléttuá í Reyðarfirði	2	0	2	3	1,6	2	2	1,6	0	0	0,0	0	0	0,0	142	135	0,7
Breiðdalsá	873	370	503	1381	2,8	740	436	2,4	133	67	5,0	309	273	0,7	263	231	0,8
Selá í Alftafirði	73	18	55	136	2,5	66	51	2,2	7	4	5,4	2	1	1,0	2	2	1,0
Geithellnaá *			0														
Hoffellsá *			0														
Laxá í Nesjum	183	55	128	393	3,0	143	98	2,6	40	30	4,6	35	34	1,5	1	1	1,0
<b>Austurland samtals:</b>	<b>5537</b>	<b>2862</b>	<b>2675</b>	<b>6847</b>	<b>2,6</b>	<b>4012</b>	<b>2205</b>		<b>1525</b>	<b>470</b>		<b>753</b>	<b>680</b>		<b>2437</b>	<b>2166</b>	

\* no records

**Table 15.** Number and weight in the rod catch in Sudurland 2006. Total catch, catch landed, mean weight, grilse/salmon ratio of Atlantic salmon, brown trout and Arctic charr (MW = mean weight kg).

River	Salmon					Grilse (1SW)			Salmon (2SW)			Brown trout			Arctic charr			
	Catch	Released	Catch landed	Weight landed	MW	Catch	Landed	Weight Landed	Catch	Landed	MW	Catch	Landed	MW	Catch	Landed	MW	
Brunná *																		
Laxá, Brúará, Djúpá	1	0	1	3	2,5	1	1	2,5	0	0	0,0	141	135	2,5	5	5	0,7	
Eldvatn á Brunas *			0															
Fossálar	1	0	1	3	3,0	1	1	3,0	0	0	0,0	63	63	2,1	9	9	1,0	
Vatnamót	11	0	11	33	3,0	8	8	2,6	3	3	4,0	626	323	2,2	3	3	0,9	
Hólmasvæði			0															
Geirlandsá	35	0	35	81	2,3	34	34	2,2	1	1	6,0	205	175	2,7	3	3	0,7	
Skaftá *			0															
Hörgsá á Síðu *			0															
Fjaðrá *			0															
Vikurflóð *			0															
Hæðargarðsvatn *			0															
Holtsá *			0															
Tungulækur	33	2	31	82	2,5	32	30	2,5	1	1	3,5	499	340	2,5	9	6	1,6	
Grenlækur	4	0	4	7	1,7	4	4	1,7	0	0	0,0	828	636	2,0	84	35	1,6	
Steinsmýrarvötn	1	0	1	3	2,5	1	1	2,5	0	0	0,0	843	700	1,1	37	32	1,1	
Eldvatn í Meðallandi	21	0	21	56	2,7	19	19	2,5	2	2	4,4	168	150	2,4	24	22	0,9	
Tungufljót	42	3	39	103	2,7	37	34	2,5	5	5	4,4	414	283	3,3	6	6	1,0	
Kúðafljót *																		
Skálm *			0															
Vatnsá og Kerlingadalssá	446	359	87	220	2,5	432	83	2,4	14	4	4,2	337	267	2,1	102	102	1,0	
Heiðarvatn *																		
Skógaá	503	4	499	1382	2,8	455	451	2,6	48	48	4,4	15	15	1,3	586	585	1,6	
Markarfljót, Álur	9	1	8	24	2,9	8	7	2,9	1	1	3,5	11	9	2,7	0	0	0,0	
Affall, A-Landeyjum *			0															
Ytri-Rangá	5600	112	5488	12879	2,4	5480	5373	2,3	120	115	4,5	0	0	0,0	0	0	0,0	
Ytri-Rangá efsta sv	647	30	617	1399	2,3	641	611	2,2	6	6	4,1	48	48	2,3	0	0	0,0	
Hólsá Vesturbakki	104	0	104	252	2,4	99	99	2,3	5	5	4,3	9	9	1,6	0	0	0,0	
Eystri-Rangá	7497	304	7193	16991	2,4	7281	6990	2,3	216	203	4,5	1	1	3,0	1	1	3,0	
Þverá *			0															
Hólsá Austurbakki	702	0	702	1979	2,8	613	613	2,6	89	89	4,5	412	397	2,3	14	12	2,0	
Hróarslækur *			0															
Minnvallarlækur	1	0	1	8	7,5	0	0	0,0	1	1	7,5	387	52	1,8	0	0	0,0	
Galtalækur			0									6	6	1,6	0	0	0,0	
Kálfá	72	22	50	130	2,8	61	45	2,4	11	5	5,2	24	22	1,3	18	18	1,3	
Fossá, Rauða *																		
Kaldakvísl												36	28	1,5	178	107	1,6	
Kvíslaveitur												257	257	1,3	0	0	0,0	
Botnsvatn *																		
Fellsendavatn												126	126	1,7	3	3	2,0	
Þórisvatn												409	409	1,8				
Veiðivötn												13272	13272	0,9	8406	8406	0,5	
Þjórsá	44	0	44	114	2,6	41	41	2,4	3	3	4,7	61	61	1,5	18	18	1,2	
Apá *																		
Apavatn *																		
Ólfúsá	324	4	320	912	2,9	269	267	2,6	55	53	4,3	71	70	1,3	4	4	1,1	
Hvítá	307	2	305	879	2,9	262	262	2,6	45	43	4,7	145	145	1,2	32	32	1,2	
Brúará	40	3	37	124	3,1	31	29	2,6	9	8	4,7	65	62	1,0	580	524	1,0	
Litla-Laxá *			0															
Stóra-Laxá	238	93	145	378	2,7	205	127	2,5	33	18	4,7	56	52	1,5	17	17	1,5	
Tungufljót	556	89	467	1240	2,7	512	432	2,5	44	35	4,5	22	22	1,9	1	1	1,5	
Sog	669	86	583	1641	2,8	591	517	2,6	78	66	4,6	55	54	1,6	177	154	1,7	
Asgarðslækur	0	0	0	0	0,0	0	0	0,0	0	0	0,0	0	0	0,0	0	0	0,0	
Varmá/Þorleifslækur	2	2	0	0	0,0	2	0	0,0	0	0	0,0	521	311	1,3	66	22	1,7	
Hróarholtslækur	39	0	39	113	3,2	24	24	2,4	15	15	3,7	980	865	1,5	4	3	0,7	
Hlíðarvatn	0	0	0	0	0,0	0	0	0,0	0	0	0,0	2	2	0,8	1480	1447	0,7	
<b>Suðurland total:</b>	<b>17949</b>	<b>1116</b>	<b>16833</b>	<b>41035</b>	<b>2,3</b>	<b>17144</b>	<b>16103</b>		<b>805</b>	<b>730</b>		<b>21115</b>	<b>19367</b>	<b>61,6</b>	<b>11867</b>	<b>11577</b>	<b>34,8</b>	

\* no records

Table 16. Salmon catch in most Icelandic Rivers 1974-2007.

River	Y E A R																											Average catch	Max catch	Min catch												
	1974	1975	1976	1977	1978	1979	1980	1981	1982	1983	1984	1985	1986	1987	1988	1989	1990	1991	1992	1993	1994	1995	1996	1997	1998	1999	2000				2001	2002	2003	2004	2005	2006	2007					
Elliðaár	2033	2071	1692	1328	1383	1336	938	1074	1219	1508	1331	1157	1083	1175	2006	1773	1384	1127	1393	1390	1132	1088	1211	568	492	424	592	414	478	472	645	954	900	936	1138	2071	414					
Úlfarsá (Korpa)	357	438	406	361	327	215	110	166	158	450	225	303	376	245	709	440	306	238	517	457	338	316	339	217	248	162	223	185	215	273	244	207	206	210	300	709	110					
Leirvogsa	332	739	544	474	463	386	136	213	322	514	320	438	324	291	1057	458	489	435	556	428	490	520	552	411	540	467	487	434	529	558	812	744	299	379	475	1057	136					
Laxá í Kjós	1270	1901	1973	1677	1648	1508	950	1290	927	1545	1273	871	1043	933	3422	1819	1370	1328	1053	1103	683	866	629	985	1192	1171	940	916	1483	1457	1305	1312	944	623	1274	3422	623					
Bugða	158	269	410	263	136	125	212	260	232	450	461	283	201	230	389	314	226	265	191	163	100	154	143	162	173	126	132	90	156	200	204	276	174	180	221	461	90					
Brynjudalsá	205	271	185	173	98	100	11	24	120	177	68	29	44	59	287	118	385	235	154	118	88	597	186	76	102	120	136	95	109	77	171	163	152	164	150	597	11					
Botnsá	247	194	158	146	171	242	121	77	92	100	70	54	117	33	209	80	105	148	97	61	58	127	65	20	92	73	124	94	139	123	120	116	102	74	113	247	20					
Laxá í Leirársveit	1116	1654	1288	1154	1252	899	707	670	545	708	742	860	1610	914	1887	1186	1052	850	652	747	853	1425	1368	697	816	1065	925	948	1102	1133	972	1294	675	820	1017	1887	545					
Andakilsá	235	331	262	187	237	138	69	104	89	108	106	101	145	136	203	122	97	134	85	109	125	118	154	184	63	177	79	95	94	245	129	233	268	246	153	331	63					
Hvítá	393	521	388	401	788	573	555	364	348	213	326	597	469	514	439	301	263	572	520	622	560	407	502	213	692	504	425	571	560	918	509	631	554	1238	513	1238	213					
Grímsá og Tunguá	1419	2116	1439	1103	1952	1527	869	845	717	1382	1061	1463	1836	825	1963	1200	756	1294	1864	1228	1485	1123	1484	1613	1705	1872	1048	1005	1116	1156	1085	1486	1114	1110	1331	2116	717					
Flökadalsá	411	613	432	263	547	377	266	181	234	281	303	351	384	282	293	182	241	350	322	387	341	288	233	319	360	347	380	362	473	334	523	410	437	438	351	613	181					
Reykjadalsá	156	275	185	112	120	105	56	80	100	91	58	42	69	42	33	75	77	157	107	40	25	97	36	94	95	73	72	33	80	156	183	205	107	196	101	275	25					
Þverá og Kjarná	1748	2690	2330	2368	3132	3558	1938	1245	1616	1901	1082	1550	2127	1703	1567	1327	1485	1979	2314	1554	1605	1638	1381	1633	2181	2136	1281	1210	1444	1872	1373	4165	2156	2404	1932	4165	1082					
Norðurá	1428	2132	1675	1470	2089	1995	1583	1185	1455	1643	856	1121	1523	1034	1359	867	1070	1267	1965	2117	1625	1697	1964	1899	2001	1676	1650	1337	2217	1444	1382	3138	2242	1447	1634	3138	856					
Gjufurá	150	522	356	400	461	286	130	101	184	225	110	138	280	73	181	133	97	171	286	192	150	356	209	240	152	134	104	99	167	88	166	255	185	220	206	522	73					
Langá	1379	2131	1568	1720	2405	1893	1049	735	1090	960	610	1155	1765	1023	1409	748	1000	951	1290	777	978	1400	1517	1366	1560	1641	1011	1407	1605	2263	2232	1912	1831	1456	1407	2405	610					
Urnóá	84	112	202	102	65	151	162	142	103	55	16	105	63	34	13	19	54	15	37	47	22	62	22	24	40	80	53	115	101	45	71	202	102	13	45	71	202	13				
Álftá	154	341	204	300	386	255	265	267	396	485	268	333	399	202	443	283	245	274	333	242	247	263	283	266	191	275	132	187	228	278	299	343	195	210	279	485	132					
Hítará	383	525	351	346	649	314	167	252	202	201	151	203	506	273	428	225	257	393	255	279	206	424	355	217	311	443	404	418	493	448	611	706	543	563	388	706	151					
Haffjarðará	613	559	595	624	950	701	494	465	562	625	549	562	1131	521	875	661	599	711	818	617	672	735	602	560	752	793	672	532	943	1007	1133	1290	1077	1079	738	1290	465					
Straumfjarðará	451	755	433	466	648	391	320	437	350	360	215	327	368	161	334	300	267	308	233	315	269	226	297	260	198	192	342	379	475	671	502	451	360	755	161	451	360	755	161			
Vatnshölsós og vötn					290	325	112	175	140	171	135	200	143		183	126	101	88	107	105	98	119	108	68	63	69	88	25	97	59	105	208	17	126	126	325	17					
Fróá		182	199	254	225	234	130	94	75	100			58	61	71	51	50	51	52	105	29	26	13	13			29	23	23	15	23	41	63	114	83	254	13					
Gríshölsá og Bakká	60	55	75	70	125	81	24	48	37	64	60	27	38																5	28	54	11	20	48	125	5	20	48	125	5		
Setbergsá					244	167	81	192	170	173	147	215	233	100	296	134	203	117	120	76	40	0	80	44	63	44	39	7	16	47	34	32	21	20	105	296	0					
Laxá á Skógarströnd	99	167	114	190	179	177	109	183	121	201	189	277	218	117	242	103	106	101	72	68	33	41	94	46	121	98	75	81	63	169	84	170	92	70	126	277	33	70	126	277	33	
Dunká					83	76	142	58	138	85	129	52	135	124	68	126	71	96	104	125	103	50	76	150	62	39	47	45	96	88	169	103	162	109	106	97	169	39	106	97	169	39
Skrauma	6	10			22	23	18	10			32	16	16	23				0	3	6	10	4	0	16			0	0							11	32	0	11	32	0		
Hörudalsá	74	55	55	51			51	55	27	87	50	79	43	18	116	78	62	77	68		17	17	23	17	13	5		17			1	7	14		44	116	1	44	116	1		
Miðá og Tunguá	117	245	121	146	135	203	85	182	132	161	128	46	101	35	200	118	90	88	214	112	42	58	48	31	103	93	40	80	60	159	76	258	218	134	119	258	31	134	119	258	31	
Haukadalsá	810	914	904	862	926	643	408	814	598	886	633	499	817	650	1232	511	540	703	776	632	407	394	626	331	916	646	348	577	426	640	455	710	522	640	659	1232	331	640	659	1232	331	
Laxá í Döllum	341	547	488	419	533	630	324	671	650	947	903	1600	1907	1408	2385	1006	1049	1227	1124	929	625	764	1032	764	1432	938	607	877	879	1394	1533	1881	1076	1145	1001	2385	324	1145	1001	2385	324	
Fléskrudá	202	298	136	242	226	261	140	190	154	214	165	257	449	381	464	203	226	183	330	212	96	157	187	144	265	145	143	221	170	182	194	283	178	322	224	464	96	322	224	464	96	
Flekkudalsá	300	462	343	342	467	509	293	255	237	249	189	133	244	129	360	140	145	241	262	247	100	109	192	148	226	131	108	131	229	284	227	290	217	174	239	509	100	174	239	509	100	
Krossá á Skaróströnd	106	120	109	81	106	156	115	157	126	203	93	27	117	51	208	99	30	100	125	114	44	100	72	28	50	71	33	52	134	95	208	187	196	106	106	208	27	106	208	27		
Búðardalsá	35				100	120	131	71	54	71	32	51	55	56	111	81	106	146	131	56	41	31	45	59	42	43	45	105	158	245	335	341	300	322	114	341	31	322	114	341	31	
Hvolsá og Staðarhólsá	126	136	185	163	180	90	18	140	111	100	144	137	323	101	768	163	331	327	306	274	243	313	83	25	61	18	26	46	27	41	78	73		128	160	768	18	128	160	768</		



Table 16. continued.

River	Y E A R																											Average catch	Max catch	Min catch										
	1974	1975	1976	1977	1978	1979	1980	1981	1982	1983	1984	1985	1986	1987	1988	1989	1990	1991	1992	1993	1994	1995	1996	1997	1998	1999	2000				2001	2002	2003	2004	2005	2006	2007			
Hrólufjarðará og Síka	194	291	228	262	346	312	253	288	220	287	195	345	536	259	532	252	200	359	459	411	176	288	205	201	243	218	141	126	168	164	631	514	339	431	296	631	126			
Mjólfjarðará	837	1414	1601	2581	2337	2132	1714	1213	926	882	583	1059	1719	1073	2081	1175	774	1112	1401	1023	668	1032	714	602	1772	1203	612	433	749	577	2228	1561	1198	1132	1239	2581	433			
Tjarnará á Vatnsnesi			34		112	82	53	56	36	53	23	55	25	0	40	18	51	23	40	9	30	0	37	61	32	10	6	39	36	53	52	50	37	38	112	0				
Víðisdalsá og Filtjá	1051	1140	1238	1792	1851	1948	1423	1392	1132	1082	625	713	1541	1563	2023	924	604	667	1473	1342	580	981	783	691	1081	1089	644	581	887	588	1745	1732	682	728	1127	2023	580			
Vatnsdalsá	706	832	571	1203	1466	1413	1033	985	721	879	699	856	1582	1496	1243	660	604	683	998	853	516	601	723	769	1149	629	323	584	850	547	964	1252	1020	853	890	1582	323			
Laxá á Ásum	1439	1881	1270	1439	1854	1650	956	1413	1036	1050	625	1440	1857	1157	1617	749	651	833	861	1458	805	1549	627	715	1136	430	770	562	559	308	462	679	365	536	1022	1881	308			
Blanda	1173	2363	1485	1367	2147	906	778	1412	861	511	495	766	1814	1243	1217	375	607	568	432	404	357	519	600	877	1984	1191	706	1086	833	504	1386	1591	1199	1107	1025	2363	357			
Svartá	420	232	96	46	295	469	444	125	73	147	132	330	391	462	275	118	105	108	363	495	400	547	244	532	619	213	170	283	260	276	398	221	303	301	291	619	46			
Laxá á Refasveit	79	58	41	71	94	146	153	71	39	57	70	111	144	132	140	96	156	117	297	227	144	143	104	139	179	105	69	88	169	82	154	254	242	208	129	297	39			
Hallá			171	185	197	138	96	57	111	86	109	55	62	62	50	30	45	56	53	28	48	57	38	31	8	22	0	53	91					100	72	197	0			
Fossá á Skaga	5	6		34	62	98	94	26	14	25	8	22	32	20	22	24	12	22	20	25	10	16	14	17	17	13	15	16	32	12	29	21	28	30	25	98	5			
Laxá á Skaga	120	134	73	140	200	220	245	161	113	93	74	134	138	176	137	70	103	70	144	106	26	30	38	41	79	10	0	0	0	0	0	24	0	85	245	0				
Sæmundará	115	116	160	212	303	112	70	52	29	75		139	94																						141	100	303	18		
Húseyjarkvísl	112	118	141	158	194	84	107	52	54	90	77	105	104	101	73	113	89	103	245	160	80	73	71	70	94	39	32	47	52	63	162	110	150	161	102	245	32			
Hofsá í Vesturdal	23	2		15			12	16	10	23																										13	23	0		
Kolka							12	12	11	7			24																							9	21	58	5	
Hrolleifsdalsá	20	24	28	41	41	65	17	4	7	4	25	15	24	10	18	16	18	16	55	7			4	1	13	1	4	11	6	3	8	12	16	8	17	65	1			
Flökadalsá í Fijótum					71	40	22	54	2	10		22	68	38	64	119	135	44	164	136	15	2	21	15	40	30	12	22	37	24	36	23	18	11	45	164	2			
Fjótá	204	189	173	269	316	199	165	125	71	60	68	83	150	112	93	323	388	135	282	203	78	102	73	119	284	51	49	114	152	49	256	259	86	90	158	388	49			
Eyjafjarðará					27	71	21	14	7	11	11	13	13	10	6	40	22	54	33	15	17	10	15	27	8	3	10	3	12	16	10	5	2	17	71	2				
Fniðská	386	268	250	273	554	446	527	257	323	98	107	120	144	93	124	112	121	135	554	411	128	60	95	156	286	157	197	146	311	166	444	460	383	346	254	554	60			
Skjálfandafjót	92	67	412	288	336	317	426	108	169	100	165	679	721	503	379	431	493	318	862	907	379	273	353	277	263	520	379	208	472	346	932	556	675	747	416	932	67			
Laxá í Aðaldal	1817	2326	1777	2699	3063	2372	2324	1455	1304	1109	1256	1911	2730	2422	2255	1619	1543	1439	2295	1983	1226	1116	1047	1227	1928	845	916	1042	1189	624	947	1025	825	1055	1609	3063	624			
Reykjadalsá og Eyvind	337	264	133	593	657	492	321	271	114	210	155	344	373	241	435	241	272	191	280	249	110	119	132	109	65	64	39	87	25	90	89	138	102	43	217	657	25			
Mýrarkvísl	210	201	121	181	221	197	169	242	179	248	215	388	490	252	287	239	188	243	390	266	139	234	160	270	212	122	49	83	258	103	357	385	306	49	225	490	49			
Ormarsá	123	117	147	275	286	119	124	54	45	87	73	203	350	275	278	264	187	156	335	366	169	163	181	141	134	108	163	143	199	233	295	216	187	182	188	366	45			
Deildará	158	189	168	224	357	164	111	93	27	55	69	234	253	178	173	145	142	88	281	391	173	206	82	141	192	65	144	122	194	93	273	177	135	257	169	391	27			
Svalbarðsá	234	172	155	240	257	158	167	51	36	41	29	161	171	176	198	238	135	136	289	384	145	215	177	98	159	124	92	143	236	291	231	292	283	302	183	384	29			
Sandá	288	238	315	474	418	411	380	138	53	47	35	257	340	403	290	182	81	100	354	434	204	209	152	91	177	190	143	128	212	151	197	260	268	268	232	474	35			
Hölná	135	118	92	219	130	66	73	26	26	25	11	109	121	131	144	105	91	55	150	130	45	78	44	36	53	47	59	77	84	105	84	140	135	101	90	219	11			
Hafralónsá	343	302	227	312	276	264	180	36	60	52	25	132	223	296	361	313	223	123	266	402	147	234	222	221	260	254	315	303	294	237	206	365	424	481	246	481	25			
Mjólfjarðará við Bakkafj.	147	144	183	248	242	135	80	39	15	39	32	116	168	206	186	235	136	101	192	172	60	170	96	101	145	116	108	98	165	152	141	195	155	198	139	248	15			
Selá í Vopnafirði	589	711	845	1463	1394	767	637	192	168	229	123	627	1258	1523	1102	895	634	772	1318	1092	631	1160	737	685	1140	991	1360	1108	1653	1558	1670	2316	2726	2227	1068	2726	123			
Vesturdalsá	391	329	326	513	498	268	141	42	34	61	47	280	197	380	231	226	163	116	264	321	218	329	201	216	159	71	129	124	269	175	88	102	104	158	211	513	34			
Hofsá og Sunnudalsá	1277	1117	1253	1273	1336	599	615	145	141	258	185	1219	1631	1710	1210	809	552	642	2238	2028	1012	1028	826	607	1008	1020	804	906	1877	1483	1864	1965	2058	1423	1121	2238	141			
Selífjót og Gilsá				77	32	19	7			6	15	16	65	70	32	12	5	26	42	90	98	16	32	8	18	25	20	22	41	26	31	47	60	45	103	37	103	5		
Fjarðará í Borgarf.eystri				44	27	13	5	1																													63	20	63	1
Breiðdalsá	126	123	76	248	412	248	153	41	20	21	4	78	158	257	185	104	91	116	226	130	72	180	92	63	85	128	171	233	325	202	700	815	937	873	226	937	4			
Laxá í Nesjum																																						84	202	8
Geitlandsá í V-Skaft.	56	162	59	99	91	88	65	59	42	51	46	49	26	32	62	47	74	93	86	27	20	38	52	47	30	12	14	31	41	36	19	13	23	35	50	162	12			
Eldvatn í Meðallandi	24	51	13	43	33	45	12	17	11	17	3	9	11	11	37	14	15	13	24	18	5	17	8	11	6	3	2	1	3	3	17	10	7	21	16	51	1			
Tungufjót			14	34	43	74	46	16	20	36	28	23	36	20	25																									

Table 17 Catch of brown trout in some Icelandic rivers 1987 - 2007. Migratory and stationary stocks are included.

River	Y E A R																				Average catch	Max catch	Min catch		
	1987	1988	1989	1990	1991	1992	1993	1994	1995	1996	1997	1998	1999	2000	2001	2002	2003	2004	2005	2006				2007	
Laxá í Leirársveit	157	1448	194	219	221	223	180	183	153	157	116	189	239	176	209	406	179	241	97	104	75	246	1448	75	
Andakilsá	4	6	1	5	0	2	1	0	3	1	7	3	4	8	4	2	67	9	3	3	6	7	67	0	
Hvítá í Borgarfirði	152	190	99	192	0	149	155	364	305	722	264	583	358	924	663	486	662	729	992	617	495	433	992	0	
Grímsá og Tunguá	71	49	49	74	4	216	108	357	188	30	136	213	189	250	291	313	175	339	119	171	174	167	357	4	
Þverá og Kjarrá	35	80	36	99	0	121	98	109	152	247	101	247	263	463	266	258	299	375	147	180	89	175	463	0	
Álfhá	29	46	57	108	184	191	156	220	251	261	298	332	324	443	338	179	238	309	269	189	211	221	443	29	
Hítará	5	17	14	30	23	23	39	0	34	61	33	25	30	29	28	38	36	42	43	27	13	28	61	0	
Höröudalsá	7	0	5	8	0	0	0	0	0	0	0	0	0	0	0	0	0	0	0	0	0	1	8	0	
Miðá og Tunguá	0	0	0	1	0	4	0	1	0	0	0	0	0	2	2	0	0	0	0	0	0	1	4	0	
Haukadalsá neðri	0	0	1	0	0	4	0	0	0	0	0	0	0	0	1	1	0	0	1	0	0	0	4	0	
Haukadalsá efri	0	0	0	3	1	0	1	0	14	0	2	0	7	1	0	5	1	0	0	0	5	2	14	0	
Staðarhólsá og Hvolsá	3	2	3	2	6	3	1	2	1	2	4	2	2	2	3	1	3	28	0	0	0	2	4	28	0
Fjarðarhórná	0	2	1	0	0	0	0	0	0	0	0	0	0	0	0	0	0	0	1	3	6	1	6	0	
Selá í Steingrímsfirði	0	0	0	0	0	0	0	0	0	0	0	0	0	0	0	0	1	0	0	0	0	0	1	0	0
Staðará í Steingrímsfirði	0	0	0	0	1	0	0	0	0	0	0	0	0	14	0	0	0	0	0	0	0	1	1	14	0
Hrútafjarðará og Siká	1	1	0	2	7	1	0	0	2	1	2	0	1	0	1	2	4	0	2	5	2	2	7	0	
Miðfjarðará	20	16	7	58	41	6	10	7	9	3	2	15	6	9	6	22	37	12	26	41	17	58	2	2	
Viðidalsá og Fitjá	0	3	26	13	41	34	23	14	16	42	52	316	80	151	143	198	60	307	364	166	291	111	364	0	
Vatnsdalsá	366	685	245	667	571	506	335	388	450	318	300	617	520	695	807	670	729	729	684	1567	1509	636	1567	245	
Frenri Laxá á Ásum	1069	2352	338	2965	4121	3911	2709	2744	2011	1301	2379	2567	2496	2980	3278	3666	3646	4602	3884	5279	4549	2993	5279	338	
Húseyjarkvist	60	7	12	426	476	483	369	540	373	349	407	373	349	397	277	559	587	427	330	397	597	371	597	7	
Hrollleifsdalsá	0	13	7	34	102	59	53	113	32	126	86	73	81	87	75	173	137	326	170	92	326	0	0		
Flókadalsá	87	27	93	111	109	54	82	0	81	29	36	169	244	263	249	419	401	398	311	181	167	419	0		
Fljótaá	0	3	0	10	0	0	0	0	0	1	1	0	0	0	1	0	1	0	0	1	1	1	10	0	
Svarfaðardalsá				24		44	23	40	18	44	26	39	30	52	156	111	80	61	123	65	59	156	18		
Hörgá				23	79	25	24	38	11	46	43	26	36	39	31	8	43	93	49	25	95	41	95	8	
Eyjafjarðará	34	49	26	67	165	86	100	153	130	146	138	142	169	241	202	352	418	483	389	232	116	183	483	26	
Fnjóska	20	8	14	14	31	25	12	45	27	31	53	25	44	22	28	40	73	79	111	49	42	38	111	8	
Skjálfaðalfjót	591	99	150	119	79	88	44	53	6	18	25	89	69	17	70	55	35	68	50	69	171	94	591	6	
Laxá í Aðaldal	835	894	1079	1275	1465	1286	1307	705	900	594	929	1068	1232	1647	1796	1542	905	1386	1513	1149	1125	1173	1796	594	
Laxá í Laxárdal	807	1075	1012	606	708	508	679	723	713	1020	1981	2099	2111	1848	1681	1703	1812	1982	1742	1437	1312	2111	508		
Laxá í Mývatnssveit	2351	3786	3235	2186	1905	1808	1263	1558	1765	2680	5966	4214	4411	4015	2845	3388	4481	5933	5972	5472	3462	5972	1263		
Litlaá		710	610	422	784	684	730	583	464	416	269	427	466	512	1662	922	1022	1014	626	393	273	649	1662	269	
Ormarsá	35	50	21	20	31	28	15	42	9	33	17	11	18	35	44	42	97	92	82	56	79	41	97	9	
Selá í Vopnaf.	3	8	10	14	9	2	4	2	8	9	6	5	14	8	5	9	7	18	3	4	4	7	18	2	
Vesturdalsá	3	1	9	5	4	4	0	6	1	1	0	0	19	2	0	0	0	0	2	0	0	3	19	0	
Hofsá og Sunnudalsá	11	8	53	31	50	43	54	22	24	30	49	32	29	39	27	34	58	133	113	75	130	50	133	8	
Gilsá og Selfljót	33	12	15	72	70	53	39	20	27	45	77	67	34	88	54	65	93	92	240	133	215	74	240	12	
Breiðdalsá	197	31	15	148	169	245	117	307	242	306	375	214	146	143	315	285	517	549	657	517	309	276	657	15	
Geirlandsá	362	303	356	193	88	109	108	118	251	235	389	274	151	237	159	193	140	404	231	187	205	223	404	88	
Skaftá	977	715	725	221	436	366	464	612	388	813	969	407	456	550	836	1305	1152	1093	1038	1171	689	733	1305	221	
Eldvatn í Meðallandi	84	170	92	35	27	38	112	129	171	192	161	215	57	53	58	78	76	151	168	172	168	115	215	27	
Grenlækur		700	894	1425	1648	2640	2338	3311	3638	2730	2493	1679	1293	1264	864	1331	1189	1700	1429	940	828	1717	3638	700	
Tungufljót	62	67	148	84	134	249	156	174	239	384	224	273	286	286	347	345	529	380	324	414	249	529	62		
Heiðarvatn			215	399	301	373	284	255	116	102	212	269	277	326	609	378	410					302	609	102	
Rangár og Fiská				179	163	527	359	337	230	393	635	468	487	494	547	216	772	934	594	398	470	456	934	163	
Ölfusá		60	29	44	70	52	58	366	53	103	161	513	399	301	911	741	1006	227	797	246	71	310	1006	29	
Sog	2	6	8	6	10	7	6	11	15	29	23	37	40	28	27	43	22	34	104	63	55	27	104	2	
Hróarholtslækur	403	550	465	322	391	449	301	580	374	326	492	1011	680	765	931	949	924	920	1266	914	980	666	1266	301	

Table 18. Catch of Arctic charr in some Icelandic rivers 1987 - 2007. Migratory and stationary stocks are included.

River	Y E A R																				Avarage catch	Max catch	Min catch		
	1987	1988	1989	1990	1991	1992	1993	1994	1995	1996	1997	1998	1999	2000	2001	2002	2003	2004	2005	2006				2007	
Laxá í Leirársveit	0	7	7	1	4	6	18	14	21	4	35	62	42	43	124	48	24	30	5	7	8	24	124	0	
Andakilsá	10	231	284	479	3	341	0	3	218	189	238	116	84	131	294	194	203	282	147	49	28	168	479	0	
Hvítá í Borgarfirði	27	9	15	19	613	88	106	14	12	4	4	78	11	2	886	653	601	664	342	312	26	214	886	2	
Grímsá og Tunguá	1	2	2	24	250	12	3	6	1	1	0	4	4	1	7	4	1	2	1	1	6	16	250	0	
Bverá og Kjarrá	3	9	111	76	113	14	35	25	9	7	63	2	5	8	19	13	15	10	3	5	1	26	113	1	
Álftá	0	1	2	1	4	6	10	9	2	3	6	6	0	7	0	4	2	3	0	5	0	3	10	0	
Hítará	193	134	132	234	518	396	184	0	259	131	426	7	344	146	136	129	126	80	57	23	58	177	518	0	
Hörödalsá	18	291	231	614	451	340		271	423	361	1021	1003	453		907		81	80	11			410	1021	11	
Miða og Tunguá		73	70	470	478	650	530	411	674	350	396	825	925	591	1009	593	273	432	184	120	328	469	1009	70	
Haukadalsá neðri	679	7	21	8	74	8	57	111	71	8	36	12	58	42	22	19	50	30	21	20	17	65	679	7	
Haukadalsá efri		22	14	237	919	149	267		590	739	593	892	949	731	93	644	453	276	278	135	240	433	949	14	
Staðarhólsá og Hvolsá	401	224	338	941	882	397	616	733	934	1490	1316	1469	1016	949	583	439	487	1000	375		549	757	1490	224	
Fjarðarhornsa	20	107	306	562	536	233	73	80	135	165			47		93	129	116	179	100	273	184	185	562	20	
Selá í Steingrímsfirði	261	12		229	334	259	77	404	145	356			171	246	529	0	90	68	640	217	81	81	221	640	0
Staðará í Steingrímsfirði	584	35	13	183	385	265	254	163	201	92	164	288	76	297	275							218	584	13	
Hrútafjarðará og Siká	269	59	68	221	532	192	135	129	221	499	363	564	346	610	358	221	303	180	158	159	100	271	610	59	
Miðfjarðará	236	167	89	221	273	152	97	123	144	47	267	304	277	97	316	148	225	235	180	216	61	185	316	47	
Viðisdalsá og Fitjá	1325	366	26	377	547	467	676	1214	3485	2782	1551	5568	3824	3138	1903	1143	2144	3004	1118	1460	1725	1802	5568	26	
Vatnsdalsá	727	1182	270	1642	1851	1112	1427	1058	812	2498	1861	1438	2755	2712	1919	1975	1430	1186	779	724	1000	1446	2755	270	
Fremri Laxá á Ásum	137	236	15	34	52	35	6	26	41	61	52	64	27	153	53	23	8	12	0	3	3	50	236	0	
Húseyjarkvísl	7	2	8	64	28	17	32	44	48	45	30	46	17	8	18	14	27	12	6	27	14	24	64	2	
Hrollleifsdalsá		47	45	221	401	410	381	628		218	198	377	325	311	281	397	409	346	261	166	152	293	628	45	
Flókadalsá	110	1028	280	2134	2198	1144	1040	1673	489	265	1135	655	2405	775	1539	1169	2279	2473	1084	499	380	1179	2473	110	
Fljótaá		1	44	627	643	881	1242	7071	6928	6931	1648	893	792	944	298	164	288	508	215	357	208	1534	7071	1	
Svarfaðardalsá				873	1049	668	1691	358	417	475	526	704	560	842	378	310	407	311	567			634	1691	310	
Hörgá				1692	1394	1238	1783	1590	1063	1245	1293	856	1216	1373	1110	935	964	896	670	860		1189	1783	670	
Eyjafljóðará	1557	1467	127	2123	2836	3095	3080	3319	2151	2098	3625	3137	2900	2620	2931	1954	1678	2052	1516	916	610	2181	3625	127	
Fnjóská	496	217	238	390	469	239	251	550	391	339	409	579	700	612	695	370	736	545	355	781	598	474	781	217	
Skjálfafljót	275	338	561	391	331	160	173	198	151	214	506	403	658	1034	356	357	338	239	116	218	292	348	1034	116	
Laxá í Aðaldal	35	187	114	137	86	48	114	57	52	29	64	52	48	115	121	91	37	27	22	8	25	70	187	8	
Laxá í Laxárdal		18	0	13	8	1	4	1	2	6	18	83	3	13	3	2	8	3	8	1	2	10	83	0	
Laxá í Mývatnssveit		1	63	3	2	2	1	0	1	1	24	329	142	28	2	2	0	13	13	15	5	32	329	0	
Litlaá		297	307	310	368	551	259	220	193	131	104	97	123	117	388	199	249	97	110	31	67	211	551	31	
Ormarsá	245	114	141	181	175	127	131	126	103	101	68	93	129	128	56	62	53	30	109	60	69	110	245	30	
Selá í Vopnaf.	249	56	52	211	105	103	51	106	84	164	115	37	55	72	53	49	63	60	50	18	33	85	249	18	
Vesturdalsá	506	51	78	513	1402	726	321	383	474	872	1080	457	815	864	1079	502	1002	557	342	223	241	595	1402	51	
Hofsá og Sunnudalsá	357	32	143	67	357	471	268	261	183	344	250	246	557	744	30	207	276	559	247	154	247	286	744	30	
Gilsá og Selfljót	230	61	71	455	382	368	242	381	261	532	421	221	340	375	469	426	447	491	429	347	310	346	532	61	
Breiðdalsá	453	74	70	600	22	23	410	369	977	396	197	235	415	601	1121	567	628	881	1193	405	263	471	1193	22	
Geirlandsá	60	69	48	29	50	43	40	39	48	43	28	26	27	54	44	50	44	38	21	8	3	39	69	3	
Skaftá	17	19	12	1	5	7	19	28	13	21	16	19	27	42	25	33	14	13	5	25	12	18	42	1	
Eldvatn í Meðallandi	21	22	3	21	3	27	19	6	60	114	61	29	27	16	50	48	39	61	19	67	24	35	114	3	
Grenlækur		78	12	151	247	177	288	273	403	290	294	223	114	128	212	283	209	267	252	145	84	207	403	12	
Tungufljót	63	37	28	107	65	46	43	85	67	60	53	52	52	40	66	130	62	79	74	23	6	59	130	6	
Heiðarvatn			106	203	213	319	159	296	131	89	498	616	385	331	1021	188	433					333	1021	89	
Rangár og Fiská				75	65	106	90	83	94	165	150	72	54	95	88	75	89	50	40	20	15	79	165	15	
Ölfusá		8	7	12	17	12	10	72	40	20	30	21	11	16	26	26	21	16	7	6	4	19	72	4	
Sog	255	312	227	426	558	173	130	209	316	914	754	860	455	451	765	752	529	508	449	102	177	444	914	102	
Hróarholtslækur	13	134	110	144	84	172	92	136	169	360	80	113	96	55	52	84	38	65	21	13	4	97	360	4	

**Table 19.** Catch in nets in 2007 in numer and weight (kg).

Area Area/River	Salmon		Brown trout		Arctic charr	
	number	weight	number	weight	number	weight
<b>Reykjanes</b>	<b>0</b>	<b>0</b>	<b>0</b>	<b>0</b>	<b>0</b>	<b>0</b>
<b>Reykjanes Total</b>	<b>0</b>	<b>0</b>	<b>0</b>	<b>0</b>	<b>0</b>	<b>0</b>
Borgarfjörður netcach ocean	3	4	33	25	8	8
Hvítá Borg. Lower part	2	5	144	109	85	56
Hvítá upper part and Norðurlingfl.	248	529	6	6	70	65
<b>Vesturland Total</b>	<b>253</b>	<b>538</b>	<b>183</b>	<b>140</b>	<b>163</b>	<b>129</b>
<b>Vestfirðir Total</b>	<b>0</b>	<b>0</b>	<b>0</b>	<b>0</b>	<b>0</b>	<b>0</b>
Héraðsvötn	29	70	130	132,6	1147	845,2
<b>Norðurland vestra Total</b>	<b>29</b>	<b>70</b>	<b>130</b>	<b>132,6</b>	<b>1147</b>	<b>845,2</b>
Skjálfandafljót	24	62			268	268
Vestmannsvatn	4	10	1250	625	1250	625
<b>Norðurland eystra Total</b>	<b>28</b>	<b>72</b>	<b>1250</b>	<b>625</b>	<b>1518</b>	<b>893</b>
Lagarfljót	23	63				
<b>Austurland Total</b>	<b>23</b>	<b>63</b>	<b>0</b>	<b>0</b>	<b>0</b>	<b>0</b>
Skaftá	10	34	271	429	4	5
Kúðafljót	62	163	198	592	0	0
Mjóásvatn (Álftaveri) *						
Markarfljót *						
Veðivötn			3210	3984	971	544
Þjórsá	4002	10511	316	673	20	20
Hvítá í Árnassýslu	1983	5973	102	181	70	49
Ölfusá	436	1151	57	118	4	3
<b>Suðurland Total</b>	<b>6493</b>	<b>17832</b>	<b>4154</b>	<b>5977</b>	<b>1069</b>	<b>621</b>
<b>Total</b>	<b>6826</b>	<b>18575</b>	<b>5717</b>	<b>6875</b>	<b>3897</b>	<b>2488</b>