

# Catch statistics for Icelandic rivers and lakes 2012

Guðni Guðbergsson



**VEIÐIMÁLASTOFNUN**  
Institute of Freshwater Fisheries



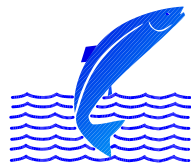
.....  
F I S K I S T O F A



VMST/13040

# Catch statistics for Icelandic rivers and lakes 2012

**Guðni Guðbergsson**



**VEIÐIMÁLASTOFNUN**  
Institute of Freshwater Fisheries



**FISKISTOFA**  
Directorate of Fisheries

Institute of Freshwater Fisheries  
**Keldnaholt, 112 Reykjavík**

Directorate of Fisheries  
**Dalshrauni 1, 220 Hafnarfirði**

**Reykjavik, June 2013**



**Contents**

Introduction..... 1

Methods..... 2

Results..... 3

Discussion..... 6

Acknowledgements..... 7

Referances..... 7

Figures ..... 10-14

Tables..... 15-33



## Introduction

There are five native fish species in freshwater in Iceland. These are the salmonid species, Atlantic salmon (*Salmo salar*), brown trout (*Salmo trutta*) and Arctic charr (*Salvelinus alpinus*). The other two are, European eel (*Anquilla anquilla*) and three-spined sticklebacks (*Gasterosteus aculeatus*). Of these species salmon has the highest economic value.

The salmon fishing season in Icelandic rivers is at the maximum of 105 days in the period from 20<sup>th</sup> of May to 30<sup>th</sup> of September. In rivers where salmon fishery is mainly based on release of reared salmon smolts the fishing season can be extended to 120 days and throughout October with permission from the Directorate of Fisheries (Fiskistofa). The daily fishing period is usually 12 hours, and the fishery must be closed for 84 hours each week. In most Icelandic rivers rod and line is the only fishing gear allowed. A fixed number of rods are used in each river. In most rivers fishing effort has remained almost unchanged since 1970. Each Fishery association needs to make a plan that outlines the management strategy. The management plan needs approval by the Directorate of Fisheries after a review by the Institute of Freshwater Fisheries. The length of the fishing season, gear and effort allowed for fishing landlocked brown trout and Arctic charr is decided by local fishery associations (landowners). The fishing season for sea trout (migratory brown trout) and sea charr (migratory Arctic charr) can be decided by fishery associations (landowners) from 1 April to 10<sup>th</sup> of October with an possible extension to 20<sup>th</sup> of October for fish stocks in good condition. The 10 day extension needs approval by the Directorate of Fisheries.

Net fishery is almost exclusively in the largest glacial rivers where angling possibilities are limited. In the net fishery gillnets are the most common fishing method and draftnet are used at few locations for brown trout and Arctic charr. The weekly net fishing period is from Tuesday morning at 10 AM to Friday evening at 10 PM. The weekly fishing period in net fisheries is 84 hours, the same as in the rod fishery. The weekend closure is to reduce fishing effort and allow fish migration to the up rivers regions and tributaries.

There has been a general ban on ocean salmon fishing in Icelandic waters since 1932. An exception to that were few localities (farms) in West Iceland with coastal fishery (Figure 1). At these localities coastal gillnets set from land were used. These fishing rights were permanently bought out in 1997 by fishery associations in nearby rivers and with governmental support. This was possible since salmon caught by anglers are of much higher value than salmon caught in the net fishery. All salmon harvested in Iceland is in freshwater and mostly based on single stock fishery.

The fishing rights go with the ownership of the land adjacent to the rivers. The landowners are usually farmers. All the landowners of the fishing rights in a river system have by law to form a fishery association, which manages the exploitation of the fish stocks, within the frame set by the law. Usually the rivers fishery association rents or leases the fishing rights to angling syndicates, angling clubs or directly to anglers. The entire riverbank is accessible to the limited number of rod fishermen that have fishing permit each day. Most rivers have fishing lodges with high quality accommodation.

The catch is recorded in special logbooks in the fishing lodges. The logbook recording system was established in 1946. At the end of the fishing season the logbooks from every river are gathered and statistical information are processed by the Institute of Freshwater Fisheries. A statistical report is sent back to the fisheries associations as well as new logbooks before the next fishing season. Online electronic catch recording in a central database is now possible and can be accessed through the Institute of Freshwater Fisheries web page ([http://www.veidimal.is/default.asp?Sid\\_Id=53634&tId=1&Tre\\_Rod=001|003|001|&qsr](http://www.veidimal.is/default.asp?Sid_Id=53634&tId=1&Tre_Rod=001|003|001|&qsr))

Catch statistics from Icelandic rivers and lakes for the 2012 fishing season have now been compiled and the main results are summarized in this report. This work is based on Gudbergsson (2013), Lax- og silungsveiðin 2012, a report from the Institute of Freshwater Fisheries (in Icelandic). The Atlantic salmon, brown trout and Arctic charr catch statistics have been compiled this way since 1987.

## **Methods**

Iceland is divided into statistical regions regarding to salmon catches (Figure 1). Information on the catch is summarized in tables for each region. The results from all regions are then combined for the whole country. The catch statistics for each river is summarized by fishing gear used. The harvesting methods used are rod and line, gillnets or draft-nets. The number of fish released (catch and release) from the rod fisheries are recorded. In previous years ocean ranching harvest has also been summarised. However, there has not been any release of smolts for commercial ocean ranching of salmon since 1998.

By tradition, the weight of freshwater fish in Iceland was measured in pounds where 1 pound = 500 g. By a decision made in 1999 this was changed to kg and the accuracy of 0,1 kg was anticipated. Fish length is measured to the nearest cm. For each fish, date of catch, pool name and number, type of bait, whether the fish is landed or released, as well as the name of the



fisherman is recorded in the logbook. Fishing pools are commonly numbered in the logbooks for ease of listing and computer processing.

The salmon catch can be divided by weight into grilse (1SW, one sea winter) and salmon (2SW, two sea winter). Males up to 4 kg and females up to 3.5 kg are grilse (one sea winter) and larger fish are salmon (multi sea winter) where off the vast majority is two sea winter salmon. This deviation into sea age has been confirmed with aging by scales with relatively little overlap in the weight distribution (Scarnecchia 1983). Salmon with more than 2 winters at sea are rare in Iceland and repeated spawning has been in low percentages in later years.

Brown trout and Arctic charr are caught in many rivers as a by-catch with the salmon. In other rivers these are the most dominant and targeted fish species. In some rivers brown trout and Arctic charr are the dominant species at certain parts of the rivers especially at slow flowing areas at the lower regions of the rivers. In this report stationary trout and sea-trout were combined, and the same applies for sea-run Arctic charr and stationary Arctic charr.

In the rod fishery the number of fish caught and releasee has been increasing. At first this was done on a voluntarily basis by the anglers but in few rivers catch and release is the only allowed fishing method. Many rivers have fly fishing only, release of two sea winter fish (fish larger than 69 cm) and bag limit of different magnitude is common. In most recent years, anglers have been encouraged by the Institute of Freshwater Fisheries, the Federation of Icelandic river owners and the Association of Icelandic angling clubs to release two-sea winter salmon in order to protect the two-sea winter salmon stock component. The catch statistics is processed for both the total catch including catch and released and the catch landed in numbers of fish and weight. Measure of length is more common than measure of weight for released fish. In cases where length is the only measure a known length weight relationship is used to calculate weight as a basis for determination of sea age composition of the catches.

In Iceland the rod catch in few rivers is based on the release of hatchery reared salmon smolts. The catch in these rivers were close to 9 thousand fish in 2012 and 26,5% of the total salmon rod catch. The catch in these rivers is reported separately since catch figures are often used as a measure of stock abundance of wild salmon and as a measure of spawning stock size. Unlike rivers with wild salmon populations, most of the rivers with releases of hatchery smolts for angling fishery have poor nursery areas and the returning adult fish do not contribute to spawning stock.

## Results

A total of 34.786 salmon were caught in rod fisheries in Icelandic rivers in 2012 where off 9.752 (28%) was released and the catch landed (caught and retained) was 25.034 salmon (Table 1). The catch landed by weight was 60.187 kg. In the rod fishery the catch of grilse (1SW) were 27.535 fish (79,2%) and 46.745 kg and 7.245 salmon (MSW) (20,8%) weighing 24.576 kg. Of the total number of released fish 5.224 (49%) were grilse and 4.519 (51 %) salmon. Of the statistical regions the highest number of fish was caught in the rod fishery in the Sudurland region 10.811 fish where off 735 were released and the catch landed was 10.076 fish and 23.113 kg. There were fewer fish recorded in other areas (Table 1).

The catch in the net fishery was 3.759 fish and 10.080 kg in total. In the net fisheries the highest number of fish was caught in the Sudurland region, 3.610 fish and 9.684 kg (Table 2). Of the net catch 2.888 fish was grilse (1SW) weighing 6.464 kg and 722 salmon (MSW) weighing 3.220 kg.

The total combined salmon catch landed (rod and nets) in Iceland 2012 was 28.793 fish and 70.267 kg, there off 25.300 (87,9%) were 1SW and 3.493 (12,1%) MSW. The total 1SW catch was 53.417 kg and the MSW catch was 16.850 kg (Table 3).

The total number of brown trout caught in rod fishery was 42.214 fish, 9.356 were released and the catch landed was 32.858 fish and 41.517 kg (table 4). The total number of Arctic charr in the rod fishery was 26.419 fish, 3.429 were released and the catch landed was 22.990 fish and 17.420 kg.

The salmon rod catch in 2012 was 20.920 fish (37,6%) lower than in the 2011 salmon season (table 5; figure 2). The total rod catch in 2012 was 14,1% lower than the average catch in the 38 years period from 1974 to 2011. The salmon catch in the net fishery was 4.970 fish (56,7%) lower than the catch in 2011 and 69% lower than the average catch in the period from 1974-2011 (Table 5, Figure 3).

In 2012 the rod catch in rivers where the catch is mainly based on releases of hatchery reared smolts was 9.244 fish that is 26,5% of the total catch and the catch was close to 30,6 tonnes. The rod catch of wild salmon in 2011 was 35.551 fish (Table 5, figure 3). In total 28% of the salmon rod catches was released and 37% of the wild salmon was released in the rod fishery.

The catch landed of wild salmon in 2012, rod and net catch combined, was 19.859 fish that is only 43,9% of the average catch landed in the period from 1974-2011 and 55,8% of the catch in 2011.

No commercial ocean ranching activities have been operating since 1998. In previous years, substantial activities of ocean ranching with Atlantic salmon was operated in Iceland reaching up to 168 thousand fish caught in 1993 as the highest catch (harvest) (Table 5; Figure 4).

The highest number of salmon caught in rod fishery was in River Ytri-Rangá 4.242 fish with River Eystri-Rangá in second place with 3.004 fish. The angling fishery both these rivers are based on releases of hatchery smolts. The angling catch in River Midfjardará came in third place with 1.610 wild salmon. The list of top 10 salmon rivers is shown in table 6. The top 3 list for catch landed was the same for Ytri-Rangá and Eystri-Rangá but River Langá was in the third place.

The top 10 list of brown trout is shown in table 7 and the top 10 list of Arctic charr is shown in table 8. The catch of brown in Iceland as a whole has been relatively stable for the past decade (Figure 5). The catch of Arctic charr has been generally decreasing since 2000 (Figure 6). The decrease in the Arctic charr catch may reflect the stock size and is causing serious concerns for the status of the spawning stocks in many rivers. The catch of brown trout has increased in many rivers while the Arctic charr have declined.

The rod catch records for individual rivers are listed by statistical areas in tables 9-15. The salmon catch in most Icelandic rivers are listed in table 16 for the period from 1974-2012 including average catch, maximum and minimum catch in the 39 year period. The rod catch of brown trout from 1987-2012 (26 years) is listed in table 17 and of Arctic charr is listed in table 18.

The catch in the net fisheries divided by species, rivers and regions is listed in table 19. The highest salmon catch was in River Thjórsá with 2.194 fish.

The sea-age composition of the salmon catches is shown in figure 7. The figure includes rivers with annual catch records since 1970 and includes 88% of the average the annual salmon catch. It is worth noticing that after high catch in the 1980s the catch of 1SW salmon decreased after 1979 and increased after 1985. The MSW salmon showed similar pattern until 1980 but opposite to the increasing catch of 1SW fish the MSW salmon stock component

showed a decline from the mid 1980's to 2000. After 2000 the declining trend of MSW salmon seems to have turned. Due to the decline of the MSW salmon component anglers are kindly asked to release MSW salmon in order to prevent the MSW component from overfishing and to conserve the MSW genetic resources in the salmon stocks.

Catch and release in the rod fishery has increased from 1996 when first recorded and was 28% of the total salmon rod catch in 2012 but 37% of the wild salmon (Figure 8). Catch and release was 19% of the total grilse (1SW) fish and 26,4% of the wild grilse (Figure 9). The proportion of catch and release of salmon (MSW) was 62,4% in total and 68% of the wild salmon.

Catch and release for brown trout and Arctic charr have increased and was 13% for Arctic charr and 22,5% for brown trout in 2012 (Figure 10).

## **Discussion**

Since 1932 there has been a general ban on ocean fishery for salmon in Icelandic waters with the exception of few locations with coastal fishery. The number of nets in rivers has been decreasing due to lease of nets, by river owner fisheries associations for not fishing. The fishing right in coastal areas was permanently bought out in 1997 by river owners with support from the government. From 1997 all salmon in Iceland were harvested in freshwater. The number of rods allowed and used in Icelandic salmon rivers has been stable since 1970. With stable effort the catch figures can to large extent be used as an indicator for changes in size of the salmon run. It can also be seen from the catch statistics that the salmon catch in rivers in the same area show similar fluctuations. Rivers where fish counters are operated show that exploitation remains stable over time although exploitation is slightly higher in years when the salmon run is low (Jonsson, Antonsson and Gudjonsson 2008, Gudbergsson and Antonsson 2008).

In Icelandic rivers the MSW salmon is dominated by 2SW fish. Longer sea phase than two years is rare and repeated spawning is in low percentages. The proportion of MSW fish is usually higher in rivers in the north and northeast Iceland than in the south and southwest regions. Since 1981-1983 the number of MSW salmon has been declining. This happened although the sex ratio of the run is stable with close to 65% females for MSW and 20% for 1SW for the period from 1973. That relates to higher mortality at the second year at sea in the later years (Gudbergsson and Gudjonsson 2003). The reason for this is not clear but this seems to relate to environmental conditions in the ocean (Gudjonsson et al. 1995). This might indicate changes in oceanic condition reflecting changes in the availability for food especially

for salmon at their second year at sea. These changes have affected the catch in rivers with high proportion of 2SW salmon and also the size of the spawning stock since MSW salmon are dominated by females that have double the number of eggs to the 1SW females.

There are considerable fluctuations between years in the salmon catch in Iceland. Usually salmon catch in rivers in the same region show similar fluctuations. The size of the salmon run depends on the number of smolts produced in each river and their sea survival. It seems that common factors affect the production of smolts in the rivers in the same area and also the sea survival. Climatic factors are of seems to have strongest effects and significant correlation has been found between the catch of grilse and ocean temperature at the time the smolts are migrating in the spring or early summer (Scarnecchia 1984; Antonsson et al. 1996).

The exploitation rate in the rod fisheries, in Icelandic rivers, has been estimated 30-80% (Gudjonsson 1986). Recent information on exploitation in the rod fishery indicates that it can, in some rivers, be 50-60% for 1SW salmon and 60-80% for 2SW salmon (Gudjonsson et al. 1996, Jónsson et al. 2008). In rivers with fish counters it has been shown that the rod catch reflects the changes in stock size. Further studies on exploitation and the size of the spawning stock in Icelandic salmon rivers are needed.

The brown trout catch was generally stable for the past 12 years the Icelandic rivers and lakes. Catch of Arctic charr on the other hand have shown a decrease from 2001. Rivers in southwest Iceland have shown the steepest decline in the catches of Arctic charr. The reasons for the decline in catch of Arctic charr are not known but can possibly relate to climate change. The mechanism for this is not fully understood and needs further studies. There are concerns that many Arctic charr stocks in southwest Iceland do not have any harvestable surplus. In this area the fishing right owners should take the necessary precautions for decreasing or stopping the exploitation before the size of spawning stock will become the limiting factor for the stock size.

Anglers are encouraged to record the trout and charr catch in the same manner as the salmon catch i.e. record each fish with information on length weight and sex of each fish etc. as listed in the log books. The catch record gives valuable information on fluctuation in fish stock and the compositions of the catches.

The continuous decline in the MSW salmon component is of major concern. The Institute of Freshwater Fisheries has encouraged the River Fisheries Associations to decrease the exploitation of the MSW salmon stock component.

### **Acknowledgements**

Many of the staff at the Institute of Freshwater Fisheries has contributed to the compilation of the catch statistics in 2012. We are in thankful to River Fishery Associations, fishing right owners, Syndicates and last but not least individual anglers that have contributed with recording their catch in the fishing log books.

### **References**

- Antonsson, Th., Gudbergsson, G. and Gudjonsson, S. 1996. Environmental continuity in fluctuation of fish stocks in the North Atlantic Ocean, with particular reference to Atlantic salmon. *North American Journal of Fisheries Management* 16:540-547.
- Gudbergsson, G. and Antonsson, Th. 2008. Tengsl stofnstærðar, sóknar og veiðihlutfalls hjá laxi í Elliðaánum. *Fræðaping landbúnaðrins* 5:242-249.
- Gudbergsson, G. 2013. Lax- og silungsveiðin 2012. Report from The Institute of Freshwater Fisheries, VMST/13039. 37 pp.
- Guðni Guðbergsson og Sigurður Guðjónsson 2003. Marine mortality of Atlantic salmon in Iceland. pp 110-114. In: *Marine mortality of Atlantic salmon, Salmo salar L: methods and measures*. E.C.E. Potter, N. Ó Maoiléigh og G. Chaput (Eds.) Canadian Science Advisory Secretariat. Research Document 2003/101.
- Gudjónsson, Th. 1986. Exploitation of Atlantic Salmon in Iceland. In: *Atlantic Salmon: Planning for the future*. (ed.) Derik Mills and David Piggins.
- Gudjónsson, S. Einarsson, S.M., Antonsson, Th. and Gudbergsson, G. 1995. Relation of grilse/salmon ratio to environmental changes in several wild stocks of Atlantic salmon (*Salmo salar*) in Iceland. *Can. J. Fish. Aquat. Sci.* 52:1385-1398.
- Ingi Rúnar Jónsson, Þórólfur Antonsson og Sigurður Guðjónsson 2008. Stofnstærð lax (*Salmo salar*) og bleikju (*Salvelinus alpinus*) í samhengi við veiði. *Fræðaping landbúnaðarins*. 5:234-241.
- Jonsson, I.R., Antonsson, TH. and Gudjonsson, S. 2008. *Icel, Agric. Sci.* 21:61-68.
- Scarnecchia, D.L. 1983. Age of sexual maturity in Icelandic stocks of Atlantic salmon (*Salmo salar*). *Can. J. Fish. Aquat. Sci.*, 40:1456-1468.

Scarnecchia, D.L. 1984. Climatic and oceanic variations affecting yield of Icelandic stocks of Atlantic salmon. *Can. J. Fish. Aquat. Sci.*, 41: 917-935.

Scarnecchia, D.L. 1984. Forecasting yields of two-sea-winter Atlantic salmon (*Salmo salar*) from Icelandic Rivers. *Can. J. Fish. Aquat. Sci.*, 8:1234-1240.

Scarnecchia, D.L., Isaksson, A., White, S.E. 1989. New and revised catch forecasts for two-sea-winter Atlantic salmon (*Salmo salar*) in Icelandic rivers. *J. Appl. Ichthyol.* 5:101-110.

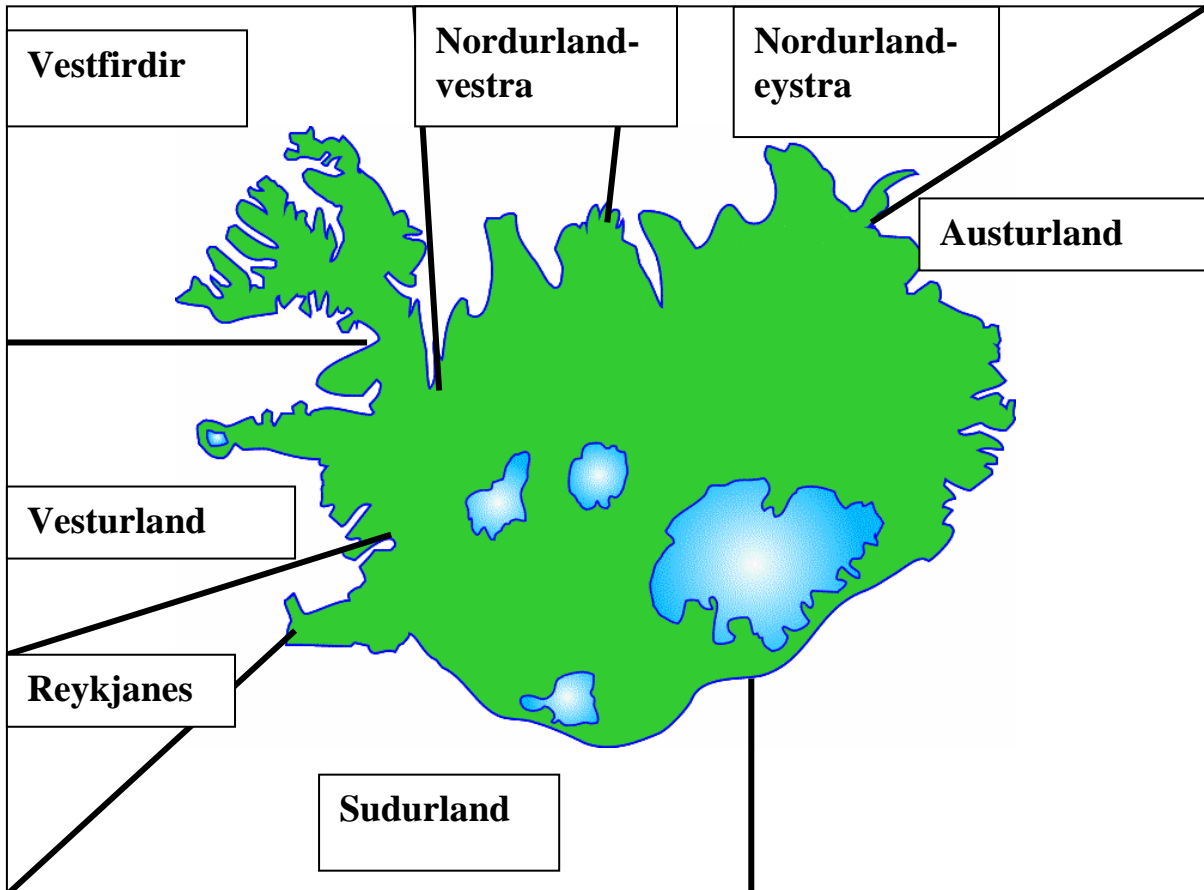


Figure 1. Statistical regions for the Atlantic salmon, brown trout and Arctic charr catch in Iceland.



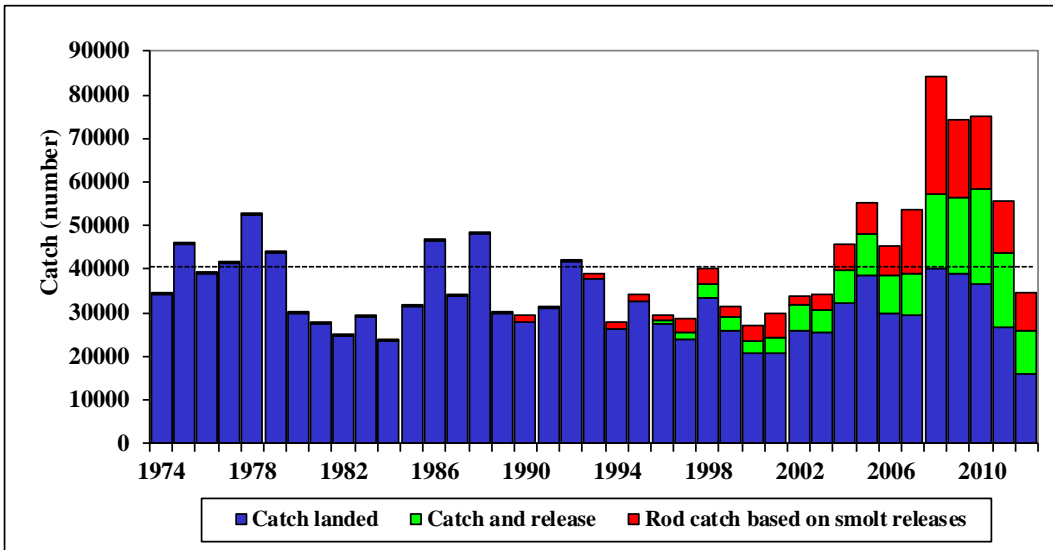


Figure 2. Salmon catch in rod and line fishery in Iceland 1974 - 2012. Catch landed (blue bars), catch and release (green bars) and catch in rivers with salmon fishery based mainly on smolt releases (red bars).

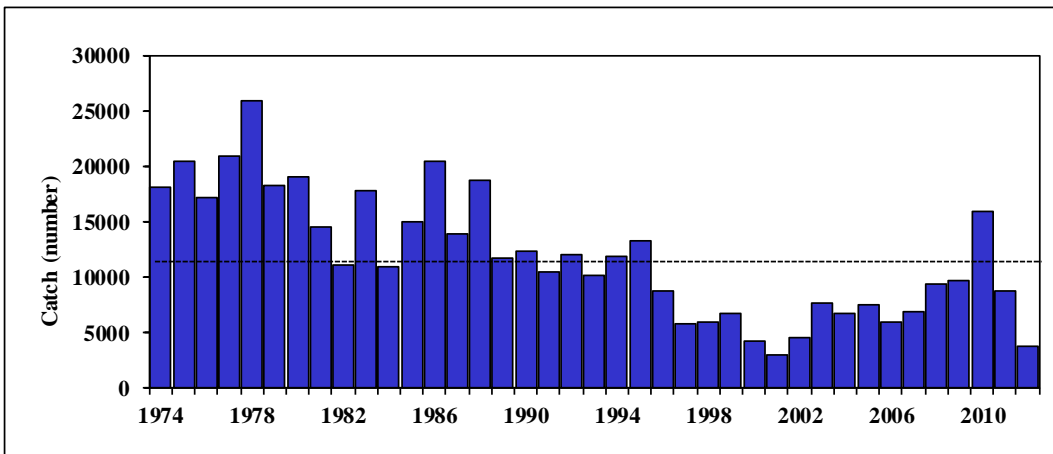


Figure 3. Salmon catch in gillnet fishery in Iceland 1974 - 2012.

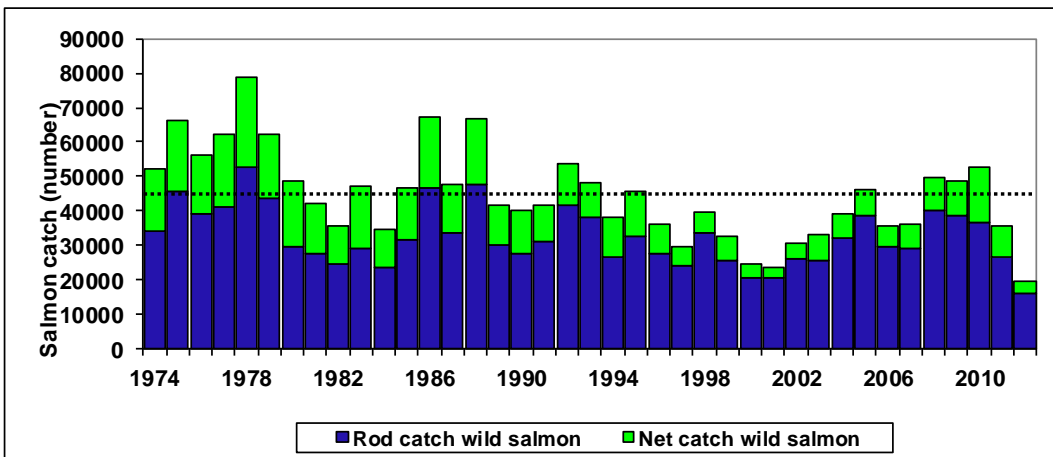


Figure 4. Salmon catch landed, wild salmon in rod fishery (blue bars) and net fishery (green bars) 1974-2012.

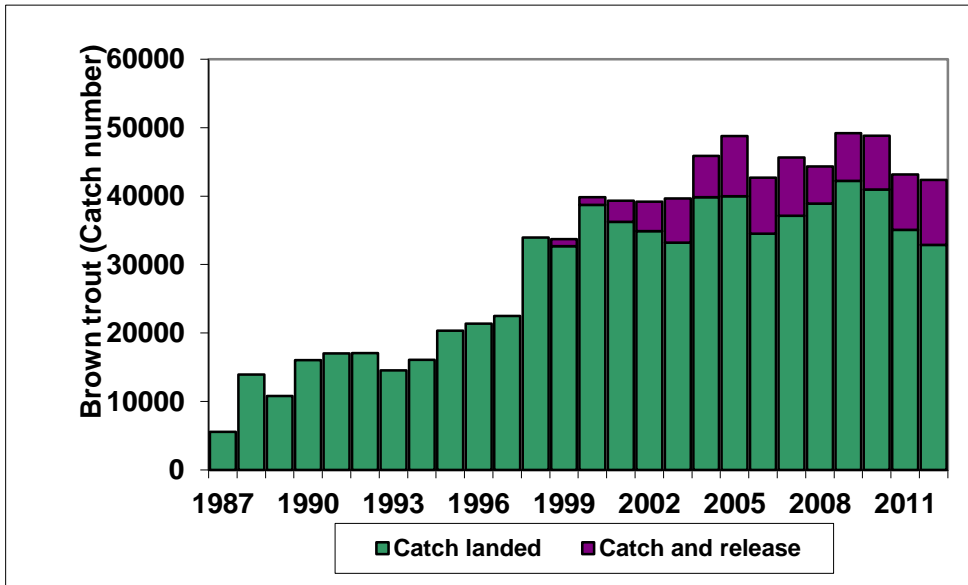


Figure 5. Catch and catch and released brown trout in the rod fishery in Iceland 1987-2012.

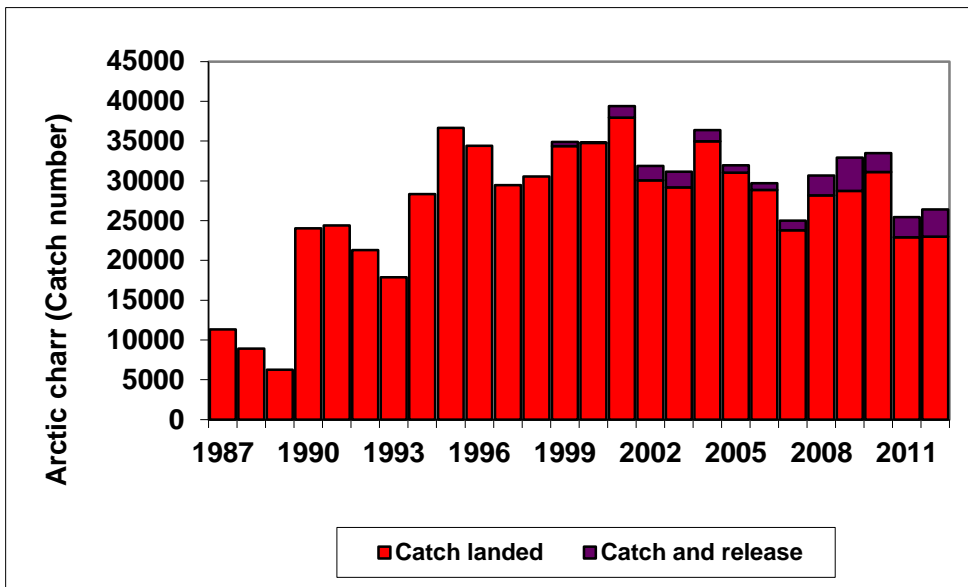


Figure 6. Catch and catch and released Arctic charr in the rod fishery in Iceland 1987-2012.

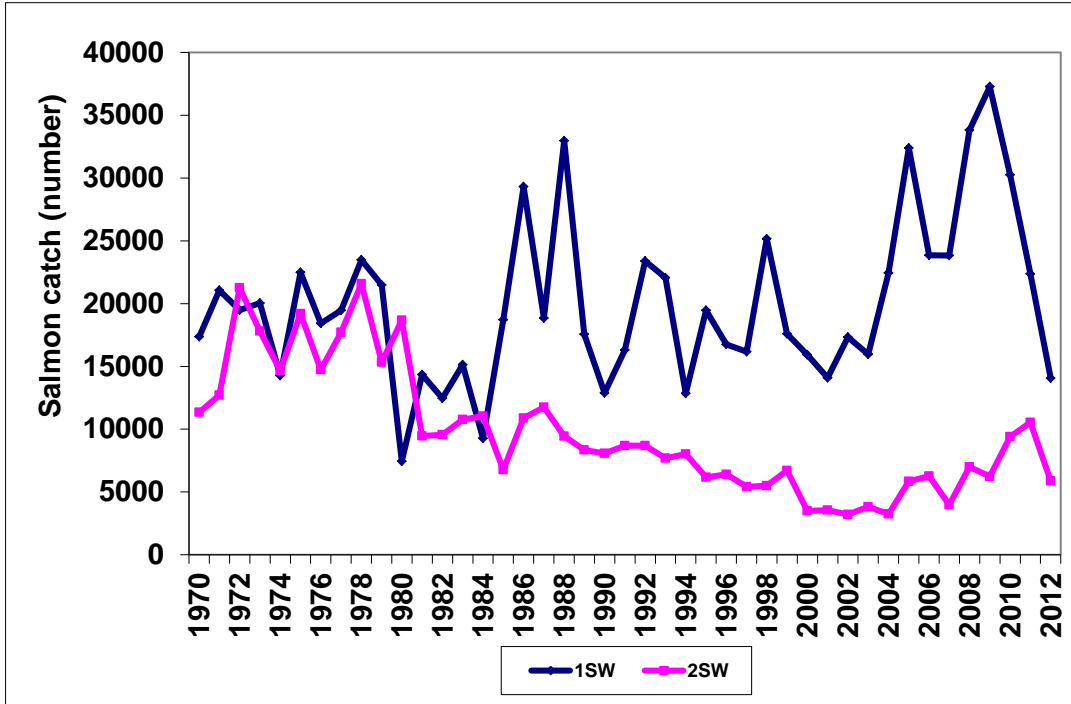


Figure 7. The sea-age composition of Atlantic salmon in rod catches in Icelandic rivers 1970-2012 (1SW = one-sea-winter, 2SW = two-sea-winter).

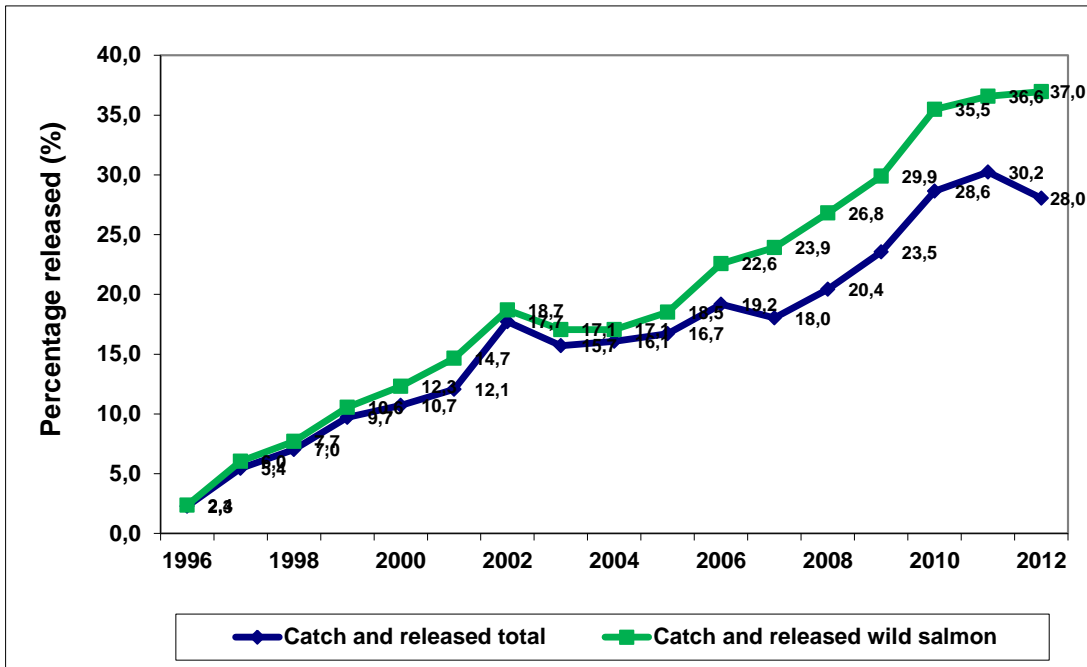


Figure 8. Percentage released salmon in the rod catch in Icelandic salmon rivers in 1996-2012 for the total catch and for wild salmon only.

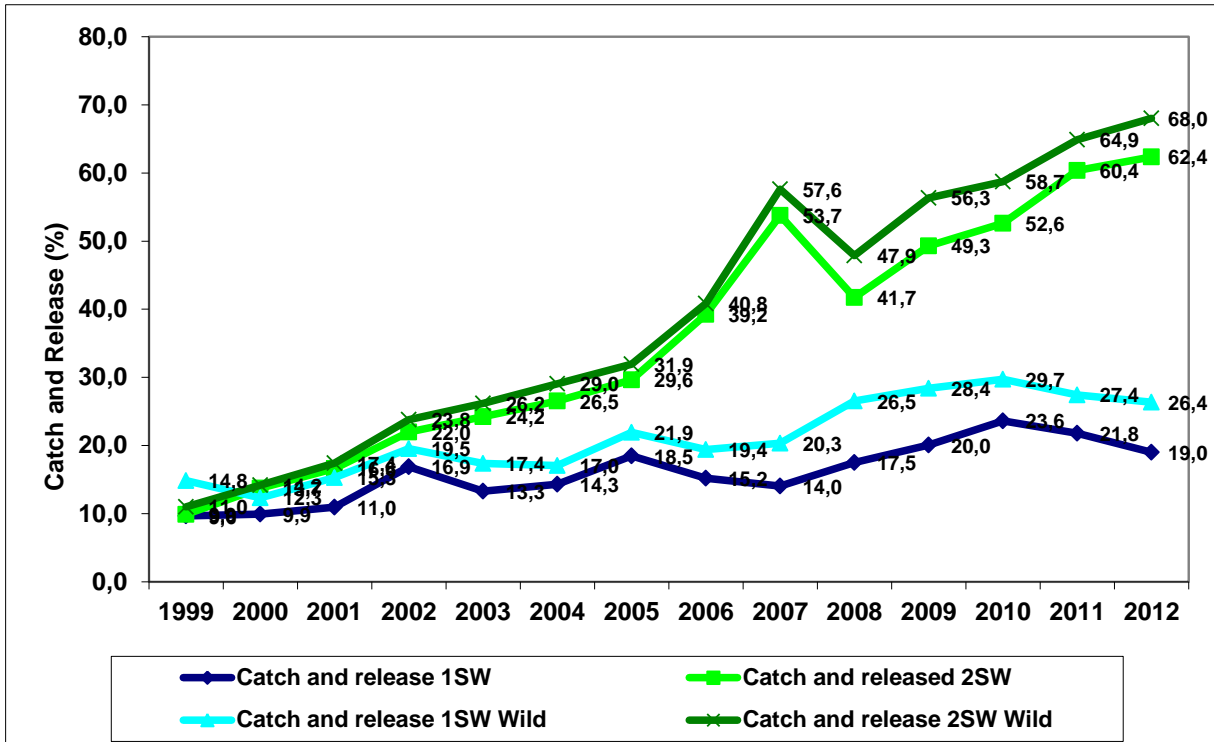


Figure 9. Percentage released fish in the rod catch in Icelandic salmon rivers in 1999-2012 for 1SW and 2SW salmon in the total catch and for wild salmon only.

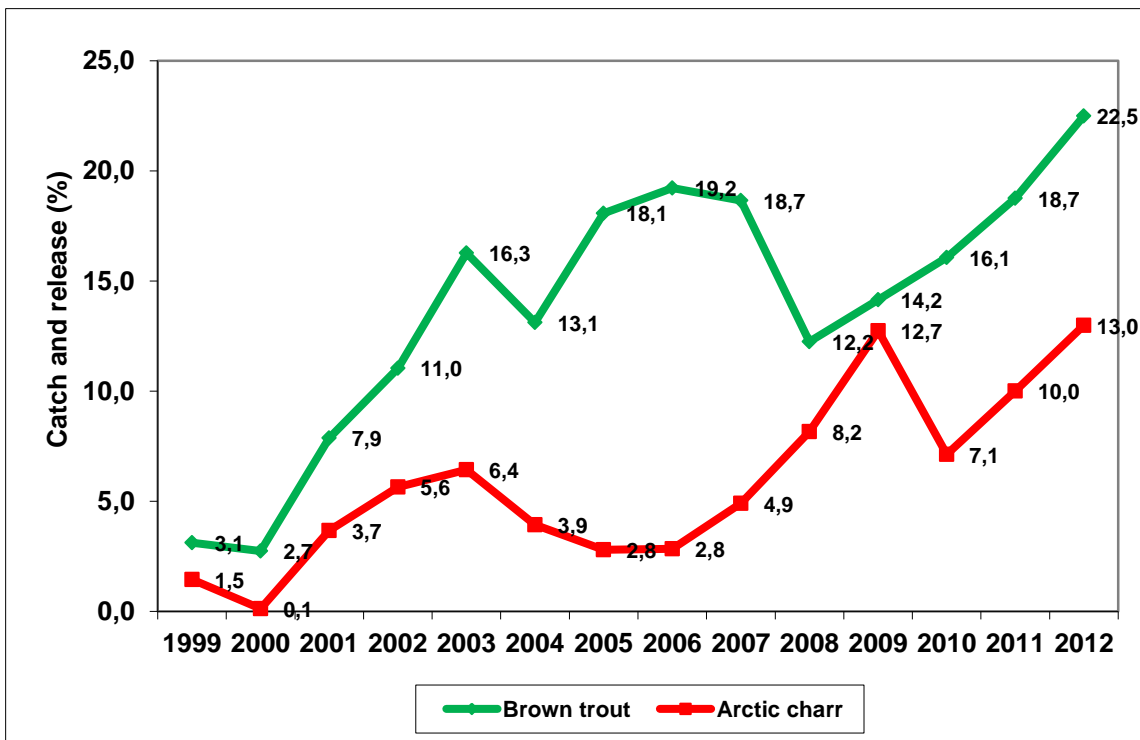


Figure 10. Percentage released brown trout and Arctic charr in the rod catch in Icelandic rivers and lakes in 1999-2012.

Table 1. Salmon catch, rod and line, in Icelandic rivers 2012.

Region	Salmon catch, rod and line											
	Catch (number)	Released (number)	Released 1SW (number)	Released 2SW (number)	Catch landed (number)	Catch landed (kg)	Catch 1SW (number)	Catch 1SW (kg)	Catch 1SW (kg)	Catch 2SW (number)	Catch 2SW (kg)	Catch 2SW (kg)
Reykjanes	1980	425	369	47	1555	3365	1509	2,13	3213	46	3,30	152
Vesturland	10353	2145	1473	672	8208	17983	7773	2,07	16117	435	4,29	1866
Vestfirðir	959	65	39	26	894	2333	755	2,19	1654	139	4,88	679
Norðurland vestra	4406	2365	1410	955	2041	5986	1561	2,22	3467	480	5,25	2519
Norðurland eystra	2379	1373	408	965	1006	3585	569	2,34	1331	437	5,16	2254
Austurland	3898	2644	1068	1576	1254	3822	905	2,26	2043	349	5,10	1779
Suðurland	10811	735	457	278	10076	23113	9236	2,05	18920	840	4,99	4193
<b>Total</b>	<b>34786</b>	<b>9752</b>	<b>5224</b>	<b>4519</b>	<b>25034</b>	<b>60187</b>	<b>22308</b>	<b>2,10</b>	<b>46745</b>	<b>2726</b>	<b>4,93</b>	<b>13442</b>

Table 2. Salmon catch, nets, in Icelandic rivers 2012.

Region	Salmon catch, nets						Ranched	
	Catch (number)	Catch landed (kg)	Catch 1SW (number)	Catch 1SW (kg)	Catch 2SW (number)	Catch 2SW (kg)	Catch (number)	Catch landed (kg)
Reykjanes	0	0	0	0	0	0	0	0
Vesturland	69	142	66	130	3	12	0	0
Vestfirðir	0	0	0	0	0	0	0	0
Norðurland vestra	5	14	3	6	2	8	0	0
Norðurland eystra	36	123	15	30	21	93	0	0
Austurland	39	117	20	42	19	75	0	0
Suðurland	3610	9684	2888	6464	722	3220	0	0
<b>Total</b>	<b>3759</b>	<b>10080</b>	<b>2992</b>	<b>6672</b>	<b>767</b>	<b>3408</b>	<b>0</b>	<b>0</b>

Table 3. Total salmon catch in Icelandic rivers 2012, rod, gillnets and ranched.

Region	Salmon catch total (rod, nets and ocean ranched)						Percentage of total	
	Catch (number)	Catch landed (kg)	Catch 1SW (number)	Catch 1SW (kg)	Catch 2SW (number)	Catch 2SW (kg)	Number %	Weight %
Reykjanes	1555	3365	1509	3213	46	152	5,4	4,8
Vesturland	8277	18125	7839	16247	438	1878	28,7	25,8
Vestfirðir	894	2333	755	1654	139	679	3,1	3,3
Norðurland vestra	2046	6000	1564	3473	482	2527	7,1	8,5
Norðurland eystra	1042	3708	584	1361	458	2347	3,6	5,3
Austurland	1293	3939	925	2085	368	1854	4,5	5,6
Suðurland	13686	32797	12124	25384	1562	7413	47,5	46,7
<b>Total</b>	<b>28793</b>	<b>70267</b>	<b>25300</b>	<b>53417</b>	<b>3493</b>	<b>16850</b>	<b>100</b>	<b>100</b>

Table 4. Catch of brown trout and Arctic charr in rod and line fishery in Icelandic river and lakes in 2012.

Region	Catch with rod and line Brown trout (sea-run and stationary)				Catch with rod and line Arctic charr (sea-run and stationary)			
	Catch (number)	Catch and released	Catch landed (number)	Catch landed (kg)	Catch (number)	Catch and released	Catch landed (number)	Catch landed (kg)
Reykjanes	230	172	58	310	8	1	7	5
Vesturland	1556	218	1338	1498	882	68	814	603
Vestfirðir	17	0	17	20	402	31	371	256
Norðurland vestra	7426	1049	6377	5652	6743	660	6083	5934
Norðurland eystra	10578	5609	4969	6055	6325	2003	4322	4574
Austurland	1052	356	696	596	3537	448	3089	2674
Suðurland	21355	1952	19403	27386	8522	218	8304	3382
<b>Total</b>	<b>42214</b>	<b>9356</b>	<b>32858</b>	<b>41517</b>	<b>26419</b>	<b>3429</b>	<b>22990</b>	<b>17428</b>

**Table 5.** The salmon catch in Iceland 1974-2012 in numbers of fish. Total rod catch, rod catch landed, catch and release, catch in rivers with rod catch based mainly on smolt releases, net catch, harvest in Ocean ranching and total catch of salmon as well as the percentage of released fish.

Year	Rod catch	Catch landed	Catch and release	Catch and release total (%)	Ranched rod catch	Catch and release Ranched rod	Catch landed Ranched rod	Rod catch wild salmon number	Rod catch landed Wild salmon	Catch and release Wild salmon	Catch and release Wild (%)	Net catch landed	Rod and net catch landed	Rod and net catch wild landed	Ocean ranched harvest	Total catch	Percentage Ranched in rod fishery
1974	34107	34107			29		29	34078	34078			18044	52151	52122	3765	55916	0,1
1975	45882	45882			57		57	45825	45825			20402	66284	66227	7720	74004	0,1
1976	39249	39249			95		95	39154	39154			17130	56379	56284	3247	59626	0,2
1977	41302	41302			46		46	41256	41256			20864	62166	62120	2405	64571	0,1
1978	52679	52679			82		82	52597	52597			25946	78625	78543	1953	80578	0,2
1979	43955	43955			98		98	43857	43857			18306	62261	62163	1967	64228	0,2
1980	30007	30007			65		65	29942	29942			18992	48999	48934	3138	52137	0,2
1981	27777	27777			80		80	27697	27697			14478	42255	42175	4626	46881	0,3
1982	24671	24671			65		65	24606	24606			11107	35778	35713	5340	41118	0,3
1983	29267	29267			22		22	29245	29245			17761	47028	47006	11194	58222	0,1
1984	23582	23582			10		10	23572	23572			10912	34494	34484	6595	41089	0,0
1985	31621	31621			17		17	31604	31604			14942	46563	46546	19750	66313	0,1
1986	46671	46671			78		78	46593	46593			20437	67108	67030	24100	91208	0,2
1987	33907	33907			32		32	33875	33875			13960	47867	47835	14140	62007	0,1
1988	47979	47979			53		53	47926	47926			18781	66760	66707	64017	130777	0,1
1989	30082	30082			80		80	30002	30002			11738	41820	41740	48617	90437	0,3
1990	29443	29443			1622		1622	27821	27821			12339	41782	40160	90726	132508	5,5
1991	31492	31492			453		453	31039	31039			10454	41946	41493	133203	175149	1,4
1992	42309	42309			521		521	41788	41788			12062	54371	53850	140763	195134	1,2
1993	39025	39025			1041		1041	37984	37984			10197	49222	48181	168427	217649	2,7
1994	28042	28042			1576		1576	26466	26466			11846	39888	38312	89225	129113	5,6
1995	34241	34241			1523		1523	32718	32718			13185	47426	45903	88527	135953	4,4
1996	29436	28767	669	2,3	1298	0	1298	28138	27469	669	2,4	8668	37435	36137	84365	121800	4,4
1997	28640	27082	1558	5,4	2960	5	2965	25680	24127	1553	6,0	5735	32817	29862	15248	48065	10,3
1998	40286	37460	2826	7,0	3848	16	3832	36438	33628	2810	7,7	5939	43399	39567	11223	54622	9,6
1999	31438	28383	3055	9,7	2536	2	2534	28902	25849	3053	10,6	6657	35040	32506	9648	44688	8,1
2000	27257	24339	2918	10,7	3744	24	3720	23513	20619	2894	12,3	4170	28509	24789	375	28884	13,7
2001	29943	26332	3611	12,1	5466	25	5441	24477	20891	3586	14,7	3043	29375	23934	0	29375	18,3
2002	33767	27782	5985	17,7	1791	31	1760	31976	26022	5954	18,6	4583	32365	30605	0	32365	5,3
2003	34111	28750	5361	15,7	3443	165	3278	30668	25472	5196	16,9	7582	36332	33054	0	36332	10,1
2004	45831	38469	7362	16,1	6285	165	6120	39546	32349	7197	18,2	6742	45211	39091	0	45211	13,7
2005	55168	45944	9224	16,7	7413	228	7185	47755	38759	8996	18,8	7560	53504	46319	0	53504	13,4
2006	45545	36810	8735	19,2	6977	92	6885	38568	29925	8643	22,4	5953	42763	35878	0	42763	15,3
2007	53703	44012	9691	18,0	15053	432	14621	38650	29391	9259	24,0	6826	50838	36217	0	50838	28,0
2008	84124	66946	17178	20,4	29268	2469	26799	54856	40147	14709	26,8	9403	76349	49550	0	76349	34,8
2009	74408	56894	17514	23,5	18884	925	17959	55524	38935	16589	29,9	9607	66501	48542	0	66501	25,4
2010	74961	53485	21476	28,6	17911	1231	16680	57050	36805	20245	35,5	15903	69388	52708	0	69388	23,9
2011	55706	38867	16839	30,2	13417	1372	12045	42289	26822	15467	36,6	8729	47596	35551	0	47596	24,1
2012	34786	25034	9752	28,0	9244	310	8934	25542	16100	9442	37,0	3759	28793	19859	0	28793	26,6
<b>Average</b>																	
<b>1974-2011</b>	<b>40473</b>	<b>36851</b>	<b>8375</b>	<b>20,7</b>	<b>3893</b>	<b>449</b>	<b>3444</b>	<b>36413</b>	<b>33075</b>	<b>7926</b>	<b>21,8</b>	<b>12131</b>	<b>48910</b>	<b>45206</b>	<b>27745</b>	<b>76655</b>	
<b>1974-2012</b>	<b>40164</b>	<b>36478</b>	<b>8456</b>	<b>21,1</b>	<b>4030</b>	<b>441</b>	<b>3590</b>	<b>36413</b>	<b>33075</b>	<b>7926</b>	<b>18,8</b>	<b>12131</b>	<b>48910</b>	<b>45206</b>	<b>27745</b>	<b>76655</b>	
<b>2002-2011</b>	<b>55732</b>	<b>43796</b>	<b>11937</b>	<b>21</b>	<b>12044</b>	<b>711</b>	<b>11333</b>	<b>43688</b>	<b>32463</b>	<b>11226</b>	<b>24,8</b>	<b>8289</b>	<b>52085</b>	<b>40752</b>	<b>0</b>	<b>52085</b>	





Table 6. Top 10 lists of salmon rivers in 2012 including catch landed and catch and released and for catch landed only.

No	River	Catch Number <sup>1</sup>	No	River	Catch landed (Number)
1	Ytri-Rangá	4242	1	Ytri-Rangá	4227
2	Eystri-Rangá	3004	2	Eystri-Rangá	3004
3	Miðfjarðará	1610	3	Langá	967
4	Selá í Vopnafirði	1511	4	Hvítá í Borgarfirði	851
5	Haffjarðará	1164	5	Blanda	803
6	Langá	1090	6	Norðurá	689
7	Hofsá og Sunnudalsá	1018	7	Elliðaár	629
8	Norðurá	953	8	Bverá og Kjarrá	605
9	Hvítá í Borgarfirði	881	9	Haukadalsá neðri	495
10	Blanda	843	10	Hítará	475

*includes catcha and release*

Table 7. Top 10 list of river or lakes with brown trout in 2012 including both migratory and stationary fish stocks.

No	River or Lake	Brown trout catch <sup>1</sup> (Number)
1	Veiðivötn	13764
2	Laxá í Þing o. Brúa	4853
3	Fremri Laxá á Ásum	3199
4	Vatnsdalsá	2371
5	Kvísloveitur	1719
6	Litlaá	1659
7	Grenlækur, Jónskvísl og Sýrlækur.	1099
8	Arnarvatnsá og Helluvaðsá	756
9	Reykjadalsá og Eyvindarlækur	707
10	Steinsmýrarvötn	703

*includes catcha and release*

Table 8. Top 10 list of river or lakes with Arctic charr in 2012 including both migratory and stationary fish stocks.

No	River or Lake	Arctic Charr catch <sup>1</sup> (Number)
1	Veiðivötn	6560
2	Fljótaá	1942
3	Vatnsdalsá	1254
4	Víðidalsá og Fitjá	1106
5	Norðfjarðará	1142
6	Flókadalsá efri	965
7	Brúará	831
8	Hörgá	769
9	Hlíðarvatn	725
10	Svarfaðardalsá	643

*includes catcha and release*

**Table 9.** Number and weight in the rod catch in Reykjanes 2012. Total catch, catch landed, mean weight, grilse/salmon ratio of Atlantic salmon, brown trout, and Arctic charr (MW = mean weight (kg)).

River	Salmon					Grilse (1SW)					Salmon (2SW)					Brown trout					Arctic charr						
	Catch	Released	Catch landed	Weight landed	MW	Catch	Landed	Released	% Released	MW	Catch	Landed	Released	% Released	MW	Catch	Landed	Released	% Released	Weight Landed	MW	Catch	Landed	Released	% Released	Weight Landed	MW
Elliðaár	830	201	629	1259	2,1	818	624	194	23,7	2,1	12	5	7	58,3	4,2	0	0	0	0,0	0	0,0	0	0	0	0,0	0	0,0
Elliðavatn *			0					0					0														
Úlfarsá (Korpa)	136	8	128	257	2,0	134	126	8	6,0	2,0	2	2	0	0,0	4,8	27	15	12	44,4	21	1,4	0	0	0	0,0	0	0,0
Leirvogsa	200	0	200	408	2,0	189	189	0	0,0	1,9	11	11	0	0,0		62	60	2	3,2	100	1,7	6	6	0	0,0	4	0,7
Blikdalsá	28	0	28	54	1,9	28	28	0	0,0	1,9	0	0	0	0,0	0,0	1	1	0	0,0	0	1,0	0	0	0	0,0	0	0,0
Kiðafellsá *			0					0					0														
Laxá í Kjós	413	114	299	780	2,6	376	291	85	22,6	2,2	37	8	29	78,4	4,5	120	77	43	35,8	163	2,1	0	0	0	0,0	0	0,0
Bugða	117	95	22	65	3,0	94	15	79	84,0	2,3	23	7	16	69,6	4,4	2	2	0	0,0	2	1,0	0	0	0	0,0	0	0,0
Meðalfellsva *			0					0					0														
Brynjudalsá	168	5	163	355	2,2	159	154	5	3,1	2,1	9	9	0	0,0	4,4	8	7	1	12,5	2	1,5	2	1	1	50,0	1	0,7
Botnsá	88	2	86	186	2,2	84	82	2	2,4	2,1	4	4	0	0,0	3,8	10	10	0	0	22	2,2	0	0	0	0,0	0	0,0
Djúpavatn *			0																								
<b>Reykjanes Total:</b>	<b>1980</b>	<b>425</b>	<b>1555</b>	<b>3365</b>	<b>2,2</b>	<b>1882</b>	<b>1509</b>	<b>373</b>	<b>19,8</b>		<b>98</b>	<b>46</b>	<b>52</b>	<b>53,1</b>		<b>230</b>	<b>172</b>	<b>58</b>	<b>33,7</b>	<b>310</b>	<b>1,8</b>	<b>8</b>	<b>7</b>	<b>1</b>	<b>12,5</b>	<b>5</b>	<b>0,8</b>

\* no records

**Table 10.** Number and weight in the rod catch in Vesturland 2012. Total catch, catch landed, mean weight, grilse/salmon ratio of Atlantic salmon, brown trout, and Arctic charr (MW = mean weight (kg)).

River	Salmon					Grilse (1SW)					Salmon (2SW)					Brown trout					Arctic charr							
	Catch	Released	Catch landed	Weight landed	MW	Catch	Landed	Released	% Released	MW	Catch	Landed	Released	% Released	MW	Catch	Landed	Released	% Released	Weight Landed	MW	Catch	Landed	Released	% Released	Weight Landed	MW	
Vötn í Svinadal *																												
Selós og Þverá	24	0	24	55	2,3	22	22	0	0,0	2,1	2	2	0	0,0	3,9	52	52	0	0,0	2	1,1	0	0	0	0	0	0	0,0
Laxá í Leirársveit	465	115	350	789	2,3	424	330	94	22,2	2,1	41	20	21	51,2		92	82	10	10,9	134	1,6	7	2	5	71,4	4	1,8	
Leirá í Leirársveit	27	0	27	47	1,8	27	27	0	0,0	1,8	0	0	0	0,0	0,0	8	3	5	62,5	4	1,3	0	0	0	0	0	0,0	
Hafnará *																												
Hvítá efri hluti	46	0	46	95	2,1	40	40	0	0,0	2,0	6	6	0	0,0	4,5	0	0	0	0,0	0	0,0	0	0	0	0	0	0,0	
Hvítá í Borg, neðrihl.	30	0	30	62	2,1	27	27	0	0,0	2,0	3	3	0	0,0	4,5	26	26	0	0,0	26	1,0	2	2	0	0	0	3	1,6
Hvítá í Borgarfirði &	805	30	775	1813	2,3	714	708	6	0,8	2,1	91	67	24	26,4	5,3	512	501	11	2,1	486	1,0	22	17	5	22,7	16	0,9	
Gufuá	69	3	66	143	2,2	66	64	2	3,0	2,0	3	2	1	33,3	6,1	9	9	0	0,0	6	0,7	4	4	0	0	15	3,7	
Andakilsá	83	3	80	166	2,1	80	78	2	2,5	2,1	3	2	1	33,3	4,5	7	7	0	0,0	5	0,7	18	18	0	0	17	0,9	
Grímsá og Tunguá	452	242	210	508	2,4	389	198	191	49,1	2,3	63	12	51	81,0		99	63	36	36,4	101	1,6	1	1	0	0	2	2,0	
Flókadalsá	300	1	299	625	2,1	294	293	1	0,3	2,0	6	6	0	0,0	4,7	5	5	0	0,0	8	1,6	0	0	0	0	0	0,0	
Reykjadalsá	45	0	45	99	2,2	42	42	0	0,0	2,1	3	3	0	0,0	4,5	7	7	0	0,0	8	1,1	1	1	0	0	1	1,0	
Þverá og Kjarrá	738	133	605	1482	2,5	590	555	35	5,9	2,3	148	50	98	66,2	4,6	35	31	4	11,4	54	1,8	2	2	0	0	2	1,2	
Norðurá	953	264	689	1557	2,3	755	668	87	11,5	2,2	198	21	177	89,4		57	55	2	3,5	70	1,3	14	14	0	0	13	0,9	
Norðlingafljót	297	71	226	420	1,9	288	219	69	24,0	1,8	9	7	2	22,2	5,0	21	19	2	0,0	16	0,8	0	0	0	0	0	0,0	
Gjúfurá	135	1	134	256	1,9	134	133	1	0,7	1,9	1	1	0	0,0	4,1	26	26	0	0,0	31	1,2	0	0	0	0	0	0,0	
Langá	1090	123	967	1982	2,1	1042	935	107	10,3	2,0	48	32	16	33,3	5,9	6	6	0	0,0	8	1,4	11	11	0	0	14	1,2	
Urriðaa	19	1	18	41	2,3	17	17	0	0,0	2,1	2	1	1	0,0	3,5	19	18	1	5,3	19	1,0	0	0	0	0	0	0,0	
Álftá og Veita	149	4	145	351	2,4	138	135	3	2,2	2,3	11	10	1	9,1	5,0	119	117	2	1,7	254	2,2	1	1	0	0	1	1,0	
Hítará	516	41	475	1017	2,1	475	456	19	4,0	2,1	41	19	22	53,7	4,3	2	2	0	0,0	2	1,0	2	2	0	0,0	2	0,8	
Haffjarðará	1164	812	352	876	2,5	937	329	608	64,9	2,5	227	23	204	89,9	5,1	129	73	56	43,4	85	1,2	28	16	12	42,9	19	1,2	
Núpa í Eyjahreppi #																												
Laxá í Miklaholtshr. *																												
Straumfjarðará	244	21	223	457	2,1	225	220	5	2,2	2,1	19	3	16	84,2	5,0	23	23	0	0,0	31	1,4	20	20	0	0	17	0,8	
Vatnasvæði Lýsu	1	0	1	2	1,5	1	1	0	0,0	1,5	0	0	0	0,0	0,0	31	26	5	16,1	14	0,5	4	3	1	25,0	1	0,5	

**Table 10 (continued).** Number and weight in the rod catch in Vesturland 2012. Total catch, catch landed, mean weight, grilse/salmon ratio of Atlantic salmon, brown trout and Arctic charr (MW = mean weight (kg)).

River	Salmon					Grilse (1SW)					Salmon (2SW)					Brown trout					Arctic charr						
	Catch	Released	Catch landed	Weight landed	MW	Catch	Landed	Released	% Released	MW	Catch	Landed	Released	% Released	MW	Catch	Landed	Released	% Released	Weight Landed	MW	Catch	Landed	Released	% Released	Weight Landed	MW
Staðará *																											
Gríshólsá og Bakká	72	68	4	10	2,6	68	4	64	5,9	2,2	4	0	4	0,0	4,5	157	106	2	67,5	51	1,5	48	38	10	20,8	25	0,7
Örlygsstaðaá-Kársst.*																											
Fróða	104	61	43	86	2,0	101	43	58	57,4	1,9	3	0	3	100,0	4,3	7	7	0	0,0	9	1,2	73	43	30	41,1	32	0,7
Valshamarsá	8	0	8	12	1,5	8	8	0	0,0	1,5	0	0	0	0,0	0,0	12	12	0	0,0	14	1,2	0	0	0	0	0	0,0
Setbergsá	53	0	53	107	2,0	53	53	0		2,0	0	0	0	0,0	0,0	2	2	0	0,0	2	1,0	0	0	0	0	0	0,0
Stóra-Langadalsá #																											
Laxá í Skógarströnd	41	3	38	65	1,7	41	38	3	7,3	1,7	0	0	0	0,0	0,0	1	1	0	0,0	2	1,5	0	0	0	0	0	0,0
Svína fossá	52	48	4	10	2,4	51	3	48	94,1	2,3	1	1	0	0,0	6,5	44	11	33	75,0	8	0,8	0	0	0	0	0	0,0
Dunká	119	2	117	259	2,2	112	111	1	0,9	2,1	7	6	1	14,3	5,0	0	0	0	0,0	0	0,0	0	0	0	0	0	0,0
Hörudalsá	56	0	56	108	1,9	55	55	0	0,0	1,9	1	1	0	0,0	4,0	0	0	0	0,0	0	0,0	48	47	1	2,1	35	0,8
Skrauma #																											
Miða og Tunguá	357	1	356	812	2,3	317	316	1	0,3	2,0	40	40	0	0,0	4,8	0	0	0	0,0	0	0,0	277	274	3	1	178	0,7
Haukadalsá neðri	500	5	495	1030	2,1	476	471	5	1,1	2,0	24	24	0	0,0	4,4	0	0	0	0,0	0	0,0	18	18	0	0	10	0,5
Haukadalsá efri	37	0	37	72	1,9	36	36	0	0,0	1,9	1	1	0	0,0	4,5	1	1	0	0,0	0	0,4	163	162	1	0,6	102	0,6
Laxá í Dölum	369	30	339	722	2,1	330	312	18	5,5	1,9	39	27	12	30,8	4,5	16	16	0	0,0	20	1,3	3	3	0	0	2	0,8
Ljá *								0																			
Ljárskógurvötn *								0																			
Fáskrúð	157	4	153	317	2,1	152	149	3	2,0	2,0	5	4	1	20,0	4,8	1	1	0	0,0	2	2,0	0	0	0	0	0	0,0
Glerá	29	0	29	60	2,1	28	28	0	0,0	2,0	1	1	0	0,0	5,0	0	0	0	0,0	0	0,0	0	0	0	0	0	0,0
Laxá í Hvamms sveit	67	1	66	131	2,0	67	66	1	1,5	2,0	0	0	0	0,0	0,0	5	5	0	0,0	4	0,8	0	0	0	0	0	0,0
Flekkudalsá	132	6	126	265	2,1	121	120	1	0,8	2,0	11	6	5	45,5	5,1	13	13	0	0,0	13	1,0	0	0	0	0	0	0,0
Krossá	165	7	158	289	1,8	161	155	6	3,7	1,8	4	3	1	25,0	3,9	11	11	0	0,0	7	0,7	30	30	0	0,0	17	0,6
Búðardalsá	276	39	237	536	2,3	251	221	30	12,0	2,1	25	16	9	36,0	5,2	1	1	0	0,0	1	1,0	4	4	0	0	2	0,6
Staðarhólsá og Hvolsá	107	5	102	250	2,5	91	87	4	4,4	2,1	16	15	1	6,3	4,5	0	0	0	0,0	0	0,0	81	81	0	0,0	74	0,9
<b>Vesturland Total:</b>	<b>10353</b>	<b>2145</b>	<b>8208</b>	<b>17983</b>	<b>2,2</b>	<b>9246</b>	<b>7773</b>	<b>1473</b>	<b>15,9</b>		<b>1107</b>	<b>435</b>	<b>672</b>	<b>60,7</b>		<b>1556</b>	<b>1338</b>	<b>168,5</b>	<b>10,8</b>	<b>1498</b>	<b>1,1</b>	<b>882</b>	<b>814</b>	<b>68</b>	<b>7,7</b>	<b>603</b>	<b>0,7</b>

\* no records

& Hvítá í Borgarfirði, combined for: Brenna, Svarthöfði, Straumar, Skuggi, Ferjukot-Norðurkot.

# River closed for all fishery

**Table 11.** Number and weight in the rod catch in Vestfirðir 2012. Total catch, catch landed, mean weight, grilse/salmon ratio of Atlantic salmon, brown trout, and Arctic charr (MW = mean weight (kg)).

River	Salmon					Grilse (1SW)					Salmon (2SW)					Brown trout					Arctic charr							
	Catch	Released	Catch landed	Weight landed	MW	Catch	Landed	Released	% Released	MW	Catch	Landed	Released	% Released	MW	Catch	Landed	Released	% Released	Weight Landed	MW	Catch	Landed	Released	% Released	Weight Landed	MW	
Gufudalsá *																												
Porskafljarðará	97	0	97	225	2,3	84	84	0	0,0	1,9	13	13	0	0,0	4,8	1	1	0	0	1	0,6	36	32	4	11,1	17	0,5	
Vatnsdalsá í Vatnsfirði	30	4	26	54	2,1	25	25	0	0,0	2,0	5	1	4	80,0	5,6	0	0	0	0	0	0,0	27	23	4	14,8	20	0,9	
Fjarðarhofsá	97	0	97	225	2,3	84	84	0	0,0	1,9	13	13	0	0,0	4,8	1	1	0	0	1	0,6	36	32	4	11,1	17	0,5	
Skálmardalsá	0	0	0	0	0,0	0	0	0	0,0	0,0	0	0	0	0,0	0,0	0	0	0	0	0		182	166	16	8,8	80	0,5	
Mórudalsá *																												
Suðurfossá	24	0	24	62	2,6	20	20	0	0,0	2,3	4	4	0	0,0	4,2	2	2	0	0,0	2	1,0	0	0	0	0,0	0	0,0	
Staðará í Súgandafirði	55	23	32	95	3,0	53	30	23	43,4	3,0	2	2	0	0,0	3,5	1	1	0	0,0	4	3,5	2	2	0	0,0	5	2,5	
Fljótavík *																												
Heydalsá *																												
Fossá í Skutulsfirði *																												
Langadalsá	152	27	125	294	2,4	121	116	5	4,1	2,2	31	9	22	71,0	4,2	0	0	0	0,0	0	0,0	3	2	1	33,3	2	1,0	
Ísafjarðará	47	0	47	119	2,5	38	38	0	0,0	2,1	9	9	0	0,0	4,5	0	0	0	0	0	0,0	1	1	0	0,0	1	0,6	
Laugardalsá	159	9	150	360	2,4	151	142	9	6,0	2,3	8	8	7	87,5	4,3	10	10	0	0,0	11	1,1	0	0	0	0,0	0	0,0	
Laugardalsvatn *				0																								
Hvannadalsá	62	0	62	180	2,9	46	46	0	0,0	2,1	16	16	0	0,0	5,1	1	1	0	0	1	0,5	3	3	0	0,0	3	1,0	
Selá í Ísafjarðardjúpi	0	0	0	0	0,0	0	0	0	0,0	0,0	0	0	0	0,0	0,0	0	0	0	0	0	0,0	0	0	0	0,0	0	0,0	
Þjarnarjarðará*																												
Hvalsá *																												
Selá í Steingrímsf.	32	1	31	92	3,0	22	21	1	4,5	2,1	10	10	0	0,0	4,8	0	0	0	0	0	0,0	98	96	2	2,0	98	1,0	
Staðará í Steing.				0																								
Miðdalsá *				0																								
Víðdalsá, Þverá, Húsá	81	0	81	271	3,4	57	57	0	0,0	2,2	24	24	0	0,0	5,7	0	0	0	0	0	0,0	1	1	0	0,0	1	0,7	
Hrófá	20	0	20	66	3,3	12	12	0	0,0	2,3	8	8	0	0,0	4,8	0	0	0	0	0	0,0	4	4	0	0,0	4	1,0	
Prestbakkaá	19	0	19	49	2,6	17	17	0	0,0	2,4	2	2	0	0,0	4,3	0	0	0	0	0	0,0	0	0	0	0,0	0	0,0	
Krossá	38	0	38	108	2,8	30	30	0	0,0	2,2	8	8	0	0,0	5,0	1	1	0	0	2	1,5	1	1	0	0,0	0	0,4	
Víkurá	40	1	39	120	3,1	28	27	1	3,6	2,2	12	12	0	0,0	5,0	0	0	0	0	0	0,0	8	8	0	0,0	8	1,0	
Laxá í Hrútafirði	6	0	6	12	2,0	6	6	0	0,0	2,0	0	0	0	0,0	0,0	0	0	0	0	0	0,0	0	0	0	0,0	0	0,0	
<b>Vestfirðir Total:</b>	<b>959</b>	<b>65</b>	<b>894</b>	<b>2332,7</b>	<b>2,6</b>	<b>794</b>	<b>755</b>	<b>39</b>	<b>4,9</b>		<b>165</b>	<b>139</b>	<b>33</b>	<b>20,0</b>		<b>17</b>	<b>17</b>	<b>0</b>	<b>0,0</b>	<b>20</b>	<b>1,2</b>	<b>402</b>	<b>371</b>	<b>31</b>	<b>7,7</b>	<b>256</b>	<b>0,69</b>	

\* no records

**Table 12.** Number and weight in the rod catch in Norðurlandi vestra 2012. Total catch, catch landed, mean weight, grilse/salmon ratio of Atlantic salmon, brown trout, and Arctic charr (MW = mean weight (kg)).

River	Salmon					Grilse (1SW)					Salmon (2SW)					Brown trout					Arctic charr							
	Catch	Released	Catch landed	Weight landed	MW	Catch	Landed	Released	%	MW	Catch	Landed	Released	%	MW	Catch	Landed	Released	%	Weight Landed	MW	Catch	Landed	Released	%	Weight Landed	MW	
Hrútafjarðará og Síká	177	52	125	336	2,7	119	106				58	19	39	67,2	5,6	4	4	0	0,0	0		114	98					
Tjarnará *																												
Hamarsá	8	0	8	22	2,8	7	7	0	0,0	2,2	1	1	0	0,0	7,0	0	0	0	0,0	0	2,3	43	43	0	0,0	22	0,5	
Miðfjarðará	1610	1330	280	636	2,3	1207	255	952	78,9	2,5	403	25	378	93,8	5,2	20	18	2	10,0	24	1,3	100	58	42	42,0	67	1,2	
Amarv.-Stóra og Austurá																429	377	52	12,1	422	1,1	223	214	9	4,0	250	1,2	
Viðdalsá og Fitjá	328	197	131	333	2,5	189	120	69	36,5	2,4	139	11	128	92,1	6,3	290	274	16	5,5	501	1,8	1106	1094	12	1,1	1160	1,1	
Vatnsdalsá	358	315	43	141	3,3	177	30	147	83,1	2,5	181	13	168	92,8	5,9	2371	2302	69	2,9	2601	1,1	1254	1198	56	4,5	1354	1,1	
Citjá %				0																								
Gljúfurá	14	5	9	20	2,3	12	7	5	41,7		2	2	0	0,0	6,9	5	5	0	0,0	5	1,0	176	148	28	15,9	136	0,9	
Laxá á Ásum	210	101	109	269	2,5	187	101	86	46,0	2,3	23	8	15	65,2	5,8	1	1	0	0,0	2	2,0							
Laxá á Ásum silungasvæði	1	1	0	0	0,0	1	0	1	100,0	0,0	0	0	0	0,0	0,0	0	0	0	0,0	0	0,0	145	105	40	0,0	134	1,3	
Fremri Laxá á Ásum	6	0	6	12	2,1	6	6	0	0,0	0,0	0	0	0	0,0	0,0	3199	3020	179	5,6	1480	0,5	0	0	0	0,0	0	0,0	
Blanda	843	40	803	2682	3,3	533	524	9	1,7	2,2	310	279	31	10,0	5,5	61	60	1	1,6	83	1,4	34	34	0	0,0	44	1,3	
Svartá	147	58	89	281	3,2	72	65	7	9,7	2,4	75	24	51	68,0	5,4	20	18	2	10,0	26	1,5	17	17	0	0,0	21	1,3	
Langavatn á Refas.*				0																								
Seyðisá *				0																								
Blöndulón *				0																								
Laxá á Refasveit	190	14	176	544	3,1	131	128	3	2,3	2,3	59	48	11	18,6	5,3	6	6	0	0,0	7	1,2	2	2	0	0,0	3	1,6	
Hallá	62	0	62	163	2,6	51	51	0	0,0	2,2	11	11	0	0,0	4,8	4	3	1	25,0	4	1,3	7	6	1	0,0	7	1,2	
Laxá í Nesjum	11	4	7	19	2,8	9	6	3	33,3	2,5	2	1	1	50,0	3,8	0	0	0	0,0	0	0,0	0	0	0	0,0	0	0,0	
Fossá á Skaga	26	0	26	114	4,4	9	9	0	0,0	2,7	17	17	0	0,0	5,3	0	0	0	0,0	0	0,0	1	1	0	0,0	1	0,5	
Laxá á Skaga #				0																								
Svartá o. Reykjafoss																172	0	172	100,0	0	0,0	0	0	0	0,0	0	0,0	
Húseyjarkvísl	141	133	8	35	4,4	54	3	51	94,4	2,7	87	5	82	94,3	5,7	630	87	543	86,2	118	1,4	2	0	2	100,0	0	0,0	
Sæmundará	164	24	140	301	2,2	154	137	17	11,0	2,1	10	3	7	70,0	5,2	68	68	0	0,0	80	1,2	117	117	0	0,0	91	0,8	
Norðurá í Skagafirði *																												
Héraðsvötn *																												
Hofsá Vesturdal																						22	20	2	9,1	15	0,7	
Hjaltadalsá og Kolka	9	0	9	41	4,5	0	0	0	0,0	0,0	9	9	0	0,0	4,5	27	27	0	0,0	29	1,1	177	171	6	3,4	173	1,0	
Hofsá, Unadalsá			0	0				0	0,0				0	0,0		1	1	0	0,0	1	1,0	30	30	0	0,0	27	0,9	
Grafará *				0																								
Hrollleifsdalsá	6	1	5	13	2,7	4	4	0	0,0	2,2	2	1	1	0,0	5,3	104	98	6	5,8	263	2,7	266	216	50	18,8	173	0,8	
Flókadalsá efri																1	1	0	0,0	1	1,2	965	920	45	4,7	856	0,9	
Flókadalsá neðri *																												
Fljótaá	95	90	5	22	4,3	49	2	47	95,9	2,4	46	3	43	93,5	5,9	13	7	6	0,0	4	0,6	1942	1591	351	18,1	1400	0,9	

\* no records

% Recorded with River Vatnsdalsá

**Table 13.** Number and weight in the rod catch in Norðurlandi eystra 2012. Total catch, catch landed, mean weight, grilse/salmon ratio of Atlantic salmon, brown trout, and Arctic charr (MW = mean weight (kg)).

River	Salmon					Grilse (1SW)					Salmon (2SW)					Brown trout					Arctic charr							
	Catch	Released	Catch landed	Weight landed	MW	Catch	Landed	Released	% Released	MW	Catch	Landed	Released	% Released	MW	Catch	Landed	Released	% Released	Weight Landed	MW	Catch	Landed	Released	% Released	Weight Landed	MW	
Fjarðará í Siglufirði																												
Ólafsfjarðará	2	0	2	4	2,0	2	2	0	0,0	2,0	0	0	0	0,0	0,0	3	3	0	0,0	2	0,8	353	300	53	15,0	240	0,8	
Svarfaðardalsá	0	0	0	0	0,0	0	0	0	0,0	0,0	0	0	0	0,0	0,0	281	253	28	10,0	179	0,7	643	612	31	4,8	564	0,9	
Héðinsfjarðará	0	0	0	0	0,0	0	0	0	0,0	0,0	0	0	0	0,0	0,0	0	0	0	0,0	0	0,0	999	589	410	41,0	860	1,5	
Héðinsfjarðarvatn	0	0	0	0	0,0	0	0	0	0,0	0,0	0	0	0	0,0	0,0	0	0	0	0,0	0	0,0	291	291	0	0,0	285	1,0	
Þorvaldsdalsá *																												
Hörgá	1	0	1	2	2,0	1	1	0	0,0	2,0	0	0	0	0,0	0,0	357	271	86	24,1	214	0,8	769	705	64	0,0	747	1,1	
Eyrafjarðará	5	0	5	13	2,5	5	5	0	0,0	2,5	0	0	0	0,0	0,0	657	612	45	6,8	728	1,2	458	236	222	48,5	238	1,0	
Fnjóská	266	26	240	1049	4,4	83	73	10	12,0	2,3	183	167	16	8,7	5,3	140	140	0	0,0	146	1,0	397	386	11	2,8	448	1,2	
Bakkaá í Fnjóskadal	0	0	0	0	0,0	0	0	0	0,0	0,0	0	0	0	0,0	0,0	45	40	5	11,1	51	1,3	190	67	123	64,7	77	1,2	
Fnjóská Bleikismýrdal	0	0	0	0	0,0	0	0	0	0,0	0,0	0	0	0	0,0	0,0	10	9	1	10,0	13	1,5	39	27	12	30,8	29	1,1	
Fjarðará í Hvalvatnsf.	0	0	0	0	0,0	0	0	0	0,0	0,0	0	0	0	0,0	0,0	2	2	0	0,0	2	1,0	363	331	32	8,8	303	0,9	
Djúpá	49	4	45	148	3,3	32	29	3	9,4	2,2	17	16	1	5,9	5,3	3	3	0	0,0	2	0,8	0	0	0	0,0	0	0,0	
Skjálfandafjót A-deild	235	15	220	755	3,4	125	120	5	4,0	2,1	110	100	10	9,1	5,1	32	32	0	0,0	24	0,7	153	150	3	0,0	119	0,8	
Skjálfandafjót B-deild	30	2	28	97	3,5	18	17	1	5,6	2,9	12	11	1	8,3	4,3	0	0	0	0,0	0	0,0	0	0	0	0,0	0	0,0	
Laxá í Aðaldal	427	383	44	221	5,0	173	14	159	91,9	2,7	254	30	224	88,2	6,1	334	168	166	49,7	249	1,5	3	3	0	0,0	5	1,5	
Laxá í Þing o. Brúa																4853	1976	2877	59,3	2766	1,4	6	3	3	50,0	5	1,6	
Amarvatnsá og Helluvaðsá																756	690	66	8,7	897	1,3	0	0	0	0,0	0	0,0	
Kráká																36	12	24	66,7	12	1,0	4	0	4	100,0	0	1,0	
Gautlandalækur																67	41	26	38,8	39	0,9	32	22	10	31,3	18	0,8	
Reykjadalsá og Eyvindarf	32	14	18	54	3,0	26	18	8	30,8	2,3	6	0	6	0,0	4,5	707	423	284	40,2	440	1,0	8	8	0	0,0	9	1,2	
Mýrarkvísl	55	10	45	144	3,2	41	41	0	0,0	2,6	14	4	10	71,4	5,2	24	8	16	0,0	24	3,0	0	0	0	0,0	0	0,0	
Litlár	5	2	3	9	3,1	3	2	1	0,0	2,5	2	1	1	0,0	4,3	1659	60	1599	96,4	68	1,1	248	4	244	0,0	6	1,5	
Skjálfvatn	0	0	0	0	0,0	0	0	0	0,0	0,0	0	0	0	0,0	0,0	133	6	127	95,5	11	1,8	637	9	628	98,6	24	2,7	
Brunná	0	0	0	0	0,0	0	0	0	0,0	0,0	0	0	0	0,0	0,0	132	22	110	83,3	27	1,2	132	22	110	83,3	29	1,3	
Deildará	95	6	89	246	2,8	70	69	1	1,4	2,2	25	20	5	20,0	4,7	99	99	0	0,0	50	0,5	45	44	1	2,2	26	0,6	
Ormarsá	372	263	109	343	3,2	154	71	83	53,9	2,5	218	38	180	82,6	5,2	179	42	137	76,5	53	1,3	211	192	19	9,0	213	1,1	
Svalbarðsá	273	261	12	27	2,3	77	10	67	87,0	2,5	196	2	194	99,0	5,0	35	26	9	25,7	26	1,0	20	9	11	55,0	10	1,1	
Sandá	281	217	64	213	3,3	74	43	31	41,9	2,5	207	21	186	89,9	5,0	0	0	0	0,0	0	0,0	0	0	0	0,0	0	0,0	
Hafralónsá	166	129	37	116	3,1	63	26	37	58,7	2,4	103	11	92	89,3	5,8	24	22	2	8,3	24	1,1	97	88	9	9,3	107	1,2	
Kverká	4	4	0	0	0,0	0	0	0	0,0	0,0	4	0	4	100,0	5,4	0	0	0	0,0	1	0,0	0	0	0	0,0	0	0,0	
Hölná	81	37	44	144	3,3	30	28	2	6,7	2,5	51	16	35	68,6	5,3	2	1	1	0,0	2	2,0	4	1	3	0,0	1	0,7	
Bakkaá (v.f. Sandvíkur) *																												
Lónsá og Sauðanesá	0	0	0	0	0,0	0	0	0	0,0	0,0	0	0	0	0,0	0,0	7	7	0	0,0	5	0,7	8	8	0	0,0	7	0,9	
<b>Norðurlandi eystra Total:</b>	<b>2379</b>	<b>1373</b>	<b>1006</b>	<b>3585</b>	<b>3,6</b>	<b>977</b>	<b>569</b>	<b>408</b>	<b>41,8</b>		<b>1402</b>	<b>437</b>	<b>965</b>	<b>68,8</b>		<b>10571</b>	<b>4962</b>	<b>5609</b>	<b>53,1</b>	<b>6051</b>	<b>1,2</b>	<b>6317</b>	<b>4314</b>	<b>2003</b>	<b>31,7</b>	<b>4567</b>	<b>1,1</b>	

\* no records

**Table 14.** Number and weight in the rod catch in Austurland 2012. Total catch, catch landed, mean weight, grilse/salmon ratio of Atlantic salmon, brown trout, and Arctic charr (MW = mean weight (kg)).

River	Salmon					Grilse (1SW)					Salmon (2SW)					Brown trout					Arctic charr							
	Catch	Released	Catch landed	Weight landed	MW	Catch	Landed	Released	Released	MW	Catch	Landed	Released	Released	MW	Catch	Land	Released	Released	Weight Landed	MW	Catch	Landed	Released	Released	Weight Landed	MW	
Mjöfjarða og Kverká	220	129	91	236	2,6	129	85	44	34	2,4	91	6	85	93	4,8	2	2	0	0	0	1,0	2	2	0	0	2	1,0	
Hölná í Bakkaf	14	12	2	12	5,9	11	1	10	90,9		3	1	2	67		3	3	0	0,0	0	1,0	2	2	0	0,0	2	1,0	
Selá í Vopnafirði	1511	1212	299	909	3,0	662	216	446	67,4	2,4	849	83	766	90	5,2	12	11	1	8,3	12	1,1	23	18	5	21,7	19	1,1	
Vesturdalsá	169	84	85	207	2,4	98	70	28	28,6	2,1	71	15	56	79	4,9	9	9	0	0,0	7	0,8	563	540	23	4,1	637	1,2	
Hofsá	887	622	265	798	3,0	499	194	305	61,1	2,3	388	71	317	82	5,4	126	124	2	1,6	124	1,0	406	401	5	1,2	361	0,9	
Sunnudalsá	131	120	11	26	2,3	80	10	70	87,5	2,6	51	1	50	98	4,9	7	2	5	71,4	2	0,8	1	1	0	0,0	2	1,5	
Fögruhlóðará	49	11	38	99	2,6	34	23	11	32,4	2,0	15	15	0	0	4,8	52	48	4	7,7	52	1,1	144	123	21	14,6	109	0,9	
Vatnasv. Jökulsár á Dal	336	179	157	422	2,7	215	129	86	40,0	2,3	121	28	93	77	4,8	33	27	6	18,2	30	1,1	316	277	39	12,3	224	0,8	
Gilsá og Selfljót	42	13	29	114	3,9	18	13	5	27,8	2,0	24	16	8	33	5,1	246	216	30	12,2	205	1,0	159	111	48	30,2	111	1,0	
Eyvindará *																												
Kelduá *																												
Grímsá á Fljótsdalshérði																46	16	30	65,2	1		10	1	9	90,0	2	2,2	
Fjarðará, Borgarf.-Eystra *																												
Fjarðará, Seyðisfirði	4	0	4	8	1,9	4	4	0	0,0	1,9	0	0	0	0,0	1	1	0	0,0	0	0,3	298	298	0	0,0	173	0,6		
Norðfjarðará	11	0	11	29	2,7	9	9	0	0,0	1,8	2	2	0	0	6,4	0	0	0	0,0	0	0,0	1142	1017	125	10,9	885	0,9	
Fjarðará, Loðmundarf.	15	9	6	11	1,9	11	6	5	45,5	1,8	4	0	4	100	6,0	50	47	3	6,0	0		240	135	105	43,8	0		
Sléttuá í Reyðarfirði #																												
Dalsá í Fäskrúðsfirði	9	1	8	16	2,0	7	7	0	0,0	1,7	2	1	1	50	4,5	0	0	0	0,0	0	0,0	149	119	30	20,1	99	0,8	
Breiðdalsá	464	250	214	850	4,0	166	110	56	33,7	2,4	298	104	194	65	5,5	450	176	274	60,9	144	0,8	79	42	37	46,8	46	1,1	
Selá í Álftafirði	36	2	34	85	2,5	30	28	2	6,7	1,9	6	6	0	0	5,2	15	14	1	6,7	18	1,3	3	2	1	33,3	2	0,9	
Ceithellnaá *																												
Hofitellsá *																												
Laxá í Nesjum *				0																								
<b>Austurland Total:</b>	<b>3898</b>	<b>2644</b>	<b>1254</b>	<b>3822</b>	<b>3,0</b>	<b>1973</b>	<b>905</b>	<b>1068</b>	<b>54,1</b>		<b>1925</b>	<b>349</b>	<b>1576</b>	<b>82</b>		<b>1052</b>	<b>696</b>	<b>356</b>	<b>33,8</b>	<b>596</b>	<b>0,9</b>	<b>3537</b>	<b>3089</b>	<b>448</b>	<b>12,7</b>	<b>2674</b>	<b>0,9</b>	

\* no records

# closed for fishery



**Table 15.** Number and weight in the rod catch in Sudurland 2012. Total catch, catch landed, mean weight, grilse/salmon ratio of Atlantic salmon, brown trout, and Arctic charr (MW = mean weight (kg)).

River	Salmon					Grilse (1SW)					Salmon (2SW)					Brown trout					Arctic charr						
	Catch	Released	landed	Weight landed	MW	Catch	Landed	Released	% Released	MW	Catch	Landed	Released	% Released	MW	Catch	Landed	Released	% Released	Weight Landed	MW	Catch	Landed	Released	% Released	Weight Landed	MW
Brunná *																											
Laxá, Brúará, Djúpa Eldvatn á Brunas. *	1	0	1	2	1,5	1	1	0	0,0	1,5	0	0	0	0,0	0,0	32	30	2	6,3	61	2,0	1	1	0	0,0	1	0,8
Fossálar	1	0	1	1	1,1	1	1	0	0,0	1,1	0	0	0	0,0	0,0	156	156	0	0,0	368	2,4	8	7	1	12,5	8	1,1
Vatnamót	8	1	7	23	3,3	6	6	0	0,0	2,2	2	1	1	50,0	672	400	272	40,5	948	2,4	7	5	2	28,6	2	0,4	
Hólmasvæði	0	0	0	0	0,0	0	0	0	0,0	0,0	0	0	0	0,0	0,0	0	0	0	0,0	0	0,0	0	0	0	0,0	0	0,0
Geirlandsá	22	4	18	36	2,0	19	17	2	10,5	2,0	3	1	2	66,7	5,3	143	92	51	35,7	228	2,5	13	12	1	7,7	12	1,0
Skaftá *																											
Hörgsá á Siðu	4	0	4	12	3,0	2	2	0	0,0	2,0	2	2	0	0,0	4,0	18	18	0	0,0	50	2,8	0	0	0	0,0	0	0,0
Fjaðrá *																											
Víkurflóð																83	71	12	14,5	31	0,4	6	6	0	0,0	4	0,7
Hæðargarðsvatn *																											
Holtsá *																											
Tungulækur *																											
Grænækur, Jónskv., Sýrl.	2	0	2	3	1,6	2	2	0	0,0	1,6	0	0	0	0,0	0,0	1099	680	419	38,1	1278	1,9	33	20	13	39,4	39	2,0
Steinsmýrarvötn	1	0	1	2	2,0	1	1	0	0,0	2,0	0	0	0	0,0	0,0	703	476	227	32,3	566	1,2	21	15	6	28,6	22	1,5
Eyjalón *																											
Eldvatn í Meðallandi	33	2	31	81	2,6	26	26	0	0,0	2,3	7	5	2	28,6	4,5	223	79	144	64,6	207	2,6	18	17	1	5,6	31	1,8
Tungufljót	49	9	40	107	2,7	43	35	8	18,6	2,3	6	5	1	16,7	5,4	267	128	139	52,1	398	3,1	39	31	8	20,5	33,2	1,1
Kúðafliót *																											
Skálm *																											
Vatnsá og Kerlingadalsá	157	77	80	181	2,3	126	78	48	38,1	2,3	31	2	29	93,5	4,9	76	57	19	25,0	82	1,4	3	3	0	0,0	5	1,6
Heiðarvatn *																											
Skógaá *																											
Markarfljót, Álur	3	0	3	6	2,1	3	3	0	0,0	2,1	0	0	0	0,0	0,0	2	2	0	0,0	4	1,8	0	0	0	0,0	0	0,0
Afall, A-Landeyjum \$	455	0	455	1001	2,2	428	428	0	0,0	2,0	27	27	0	0,0	5,0												
Ytri-Rangá	4242	15	4227	9299	2,2	3975	3962	13	0,3	2,0	267	265	2	0,7	5,0	100	96	4	4,0	182	1,9	16	16	0	0,0	23	1,4
Hólsá - vesturbakki	139	0	139	325	2,3	121	121	0	0,0	2,0	18	18	0	0,0	4,9	3	3	0	0,0	3	1,1	1	1	0	0,0	0	0,8
Hólsá - austurbakki	347	0	347	1038	3,0	261	261	0	0,0	2,4	86	86	0	0,0	5,0	70	70	0	0,0	139	2,0	0	0	0	0,0	0	0,0
Eystri-Rangá \$	3004	0	3004	6609	2,2	2815	2815	0	0,0	2,0	189	189	0	0,0	5,0												
Dverá \$	272	0	272	598	2,2	256	256	0	0,0	2,0	16	16	0	0,0	5,0												
Hróarslækur	94	0	94	205	2,2	88	88	0	0,0	2,0	6	6	0	0	4,5	5	5	0	0,0	10	2,0	12	12	0	0,0	19	1,6
Minnivallarlækur																290	49	241	83,1	70	1,4	1	1	0	0,0	2	2,0
Galtalækur																75	0	75	100,0	0	0,0	3	0	3	0,0	0	0,0

**Table 15. (continued).** Number and weight in the rod catch in Sudurland 2012. Total catch, catch landed, mean weight, grilse/salmon ratio of Atlantic salmon, brown trout, and Arctic charr (MW = mean weight (kg)).

River	Salmon					Grilse (1SW)					Salmon (2SW)					Brown trout					Arctic charr							
	Catch	Released	Catch landed	Weight landed	MW	Catch	Landed	Released	% Released	MW	Catch	Landed	Released	% Released	MW	Catch	Landed	Released	% Released	Weight Landed	MW	Catch	Landed	Released	% Released	Weight Landed	MW	
Kálfá	137	37	100	240	2,4	118	94	24	20,3	2,2	19	6	13	68,4	5,2	30	30	0	0,0	35	1,2	2	2	0	0,0	0	4	2,2
Fossá í Þjórsárdal	31	3	28	85	3,0	21	20	1	4,8	2,6	10	8	2	0	4,5	4	4	0	0,0	11	2,8	0	0	0	0,0	0	0	0,0
Þverá í Þjórsárdal	7	0	7	16	2,2	6	6	0	0,0	1,9	1	1	0	0	4,0	16	16	0	0,0	10	0,6	2	2	0	0,0	2	0,8	
Þjórsá Miðhús	10	0	10	22	2,2	9	9	0	0,0	2,1	1	1	0	0	3,5	25	25	0	0,0	31	1,2	0	0	0	0,0	0	0,0	
Kaldakvísl *				0																								
Kvísilaveitur				0												1719	1639	80	4,7	1934	1,2							
Botnsvatn *				0																								
Fellsendavatn				0												36	36	0	0,0	52	1,4							
Þórisvatn				0												42	42	0	0,0	55	1,3							
Veivötn				0												13764	13764	0	0,0	18719	1,4	6560	6560	0	0,0	1640	0,3	
Laugarvatn *				0																								
Hólaá				0												31	20	11	35,5	18	0,9	34	16	18	52,9	14	0,9	
Apá *				0																								
Apavatn				0												158	156	2	1,3	117	0,8	1	1	0	0,0	0	0,4	
Ólfusá	302	0	302	773	2,6	257	257	0	0,0	2,2	45	45	0	0,0	4,8	418	418	0	0,0	493	1,2	1	1	0	0,0	1	1,0	
Hvítá	409	8	401	1115	2,8	318	315	3	0,9	2,2	91	86	5	5,5	4,9	202	201	1	0,5	267	1,3	6	6	0	0,0	9	1,5	
Brúará	30	2	28	75	2,7	25	23	2	8,0	2,4	5	5	0	0,0	4,0	120	110	10	8,3	109	1,0	831	734	97	11,7	807	1,1	
Litla-Laxá *				0																								
Stóra-Laxá	673	477	196	480	2,5	470	181	289	61,5	2,6	203	15	188	92,6	5,5	26	19	7	26,9	35	1,9	18	13	5	27,8	18	1,4	
Tungufljót Biskupstungur	58	45	13	37	2,9	53	10	43	81,1	2,2	5	3	2	40,0	6,0	14	4	10	0,0	12	2,9	2	1	1	50,0	1	1,0	
Sog	305	52	253	706	2,8	231	209	22	9,5	2,4	74	44	30	40,5	5,3	56	46	10	17,9	75	1,6	154	129	4	2,6	159	1,2	
Ásgarðslækur *				0																0								
Varná/Þorleifs lækur	2	2	0	0	0,0	1	0	1	100,0	0,0	1	0	1	100,0	0,0	119	17	102	85,7	25	1,5	3	0	3	100,0	0	0,0	
Hróarsholtslækur	13	1	12	35	2,9	10	9	1	10,0	2,5	3	3	0	0,0	4,0	557	443	114	20,5	762	1,7	1	0	1	100,0	0	0,0	
Úlfjótavatn *				0																								
Þingvallavatn *				0																								
Hlíðarvatn				0												1	1	0	0,0	1	0,6	725	692	33	4,6	526	0,8	
<b>Sudurland Totalsamtals:</b>	<b>10810</b>	<b>735</b>	<b>10075</b>	<b>23111</b>	<b>2,3</b>	<b>9692</b>	<b>9235</b>	<b>457</b>	<b>4,7</b>		<b>1118</b>	<b>840</b>	<b>278</b>	<b>24,9</b>		<b>21323</b>	<b>19373</b>	<b>1950</b>	<b>9,1</b>	<b>27325</b>	<b>1,4</b>	<b>8521</b>	<b>8303</b>	<b>218</b>	<b>2,6</b>	<b>3381</b>	<b>0,4</b>	

\* no records

§ weighth and seage is estimated



Table 16. continued.

River	Y E A R																												Average catch	Max catch	Min catch															
	1974	1975	1976	1977	1978	1979	1980	1981	1982	1983	1984	1985	1986	1987	1988	1989	1990	1991	1992	1993	1994	1995	1996	1997	1998	1999	2000	2001				2002	2003	2004	2005	2006	2007	2008	2009	2010	2011	2012				
Hrútafjarðará og Síká	194	291	228	262	346	312	253	288	220	287	195	345	536	259	532	252	200	359	459	411	176	288	205	201	243	218	141	126	168	164	631	514	339	431	402	643	499	318	177	311	643	126				
Möfjarðará	837	1414	1601	2581	2337	2132	1714	1213	926	882	583	1059	1719	1073	2081	1175	774	1112	1401	1023	668	1032	714	602	1772	1203	612	433	753	577	2228	1561	1198	1132	1736	3962	4048	2365	1610	1432	4048	433				
Tjarnará á Vatnsnesi			34		112	82	53	56	36	53	23	55	25	0	40	18	51	23	40	9	30	0	37	61	32	10	6	39	36	53	52	50	37	71	93	62	53			42	112	0				
Víðisdalsá og Fljót	1051	1140	1238	1792	1851	1948	1423	1392	1132	1082	625	713	1541	1563	2023	924	604	667	1473	1342	580	981	783	691	1081	1089	644	581	887	588	1745	1732	682	728	1440	1999	1256	719	328	1130	2023	328				
Vatnsdalsá	706	832	571	1203	1466	1413	1033	985	721	879	699	856	1582	1496	1243	660	604	683	998	853	516	601	723	769	1149	629	323	584	850	547	964	1256	1020	853	1233	1520	1311	812	358	910	1582	323				
Gjulfurá																																														
Laxá á Ásum	1439	1881	1270	1439	1854	1650	956	1413	1036	1050	625	1440	1857	1157	1617	749	651	833	861	1458	805	1549	627	715	1136	430	770	562	559	308	462	679	365	536	503	1123	737	438	210	968	1881	210				
Blanda	1173	2363	1495	1367	2147	906	778	1412	861	511	495	766	1814	1243	1217	375	607	568	432	404	357	519	600	877	1984	1191	706	1086	833	504	1386	1591	1199	1107	927	2445	2654	2036	843	1122	2654	357				
Svartá	420	232	96	46	295	469	444	125	73	147	132	330	391	462	275	118	105	108	363	495	400	547	244	532	619	213	170	283	260	276	398	221	303	301	272	420	572	300	147	298	619	46				
Laxá á Refasveit	79	58	41	71	94	146	153	71	39	57	70	111	144	132	140	96	156	117	297	227	144	143	104	139	179	105	69	88	169	82	154	254	242	208	224	340	319	274	190	147	340	39				
Halla				171	185	197	138	96	57	111	86	109	55	62	62	50	30	45	56	53	28	48	57	38	38	31	8	22	0		53	91	65	100		179	103	47	62	75	197	0				
Fossá á Skaga	5	6		34	62	98	94	26	14	25	8	22	32	20	22	24	12	22	20	25	10	16	14	17	17	13	15	16	32	12	29	21	28	30	23	30	29	23	26	26	98	5				
Laxá á Skaga	120	134	73	140	200	220	245	161	113	93	74	134	138	176	137	70	103	70	144	106	26	30	38	41	79	10	0	0	0	0	0	24	0	0	0	0	0	0	0	0	0	74	245	0		
Sæmundará	115	116	160	212	303	112	70	52	29	75		139	94																																	
Húseyjarvísl	112	118	141	158	194	84	107	52	54	90	77	105	104	101	73	113	89	103	245	160	80	73	71	70	94	39	32	47	52	63	162	110	150	161	199	281	249	175	141	116	281	32				
Hofsá í Vesturdal	23	2		15			12	16	10	23																																				
Kolka							12	12	11	7																																				
Hrolleifsdalsá	20	24	28	41	41	65	17	4	4	7	4	25	15	24	10	18	16	18	16	55	7		4	1	13	1	4	11	6	3	8	12	16	8	4	10	11	14	6	16	65	1				
Flókadalsá í Fljótum						71	40	22	54	2	10																																			
Fljótá	204	189	173	269	316	199	165	125	71	60	68	83	150	112	93	323	388	135	282	203	78	102	73	119	284	51	49	114	152	49	256	259	86	90	84	465	284	192	95	166	465	49				
Eyjafjarðará						27	71	21	14	7	11	11	13	13	10	6	40	22	54	33	15	17	10	15	27	8	3	10	3	12	16	10	5	2	0	4	10	9	5	16	71	0				
Fnjöská	386	268	250	273	554	446	527	257	323	98	107	120	144	93	124	112	121	135	554	411	128	60	95	156	286	157	197	146	311	166	444	460	383	346	501	417	1054	687	266	296	1054	60				
Skjálafandafjót	92	67	412	288	336	317	426	108	169	100	165	679	721	503	379	431	493	318	862	907	379	273	353	277	263	520	379	208	472	346	932	556	675	747	681	696	535	727	265	437	932	67				
Laxá í Aðaldal	1817	2326	1777	2699	3063	2372	2324	1455	1304	1109	1256	1911	2730	2422	2255	1619	1543	1439	2295	1983	1226	1116	1047	1227	1928	895	916	1042	1189	624	947	1025	825	1055	1168	1078	1493	1089	427	1539	3063	427				
Reykjadalsá og Eyvín	337	264	133	593	657	492	321	271	114	210	155	344	373	241	435	241	272	191	280	249	110	119	132	109	65	64	39	87	25	90	89	138	102	43	32	76	104	79	32	198	657	25				
Mýrarkvísl	210	201	121	181	221	197	169	242	179	248	215	388	490	252	287	239	188	243	390	266	139	234	160	270	212	122	49	83	258	103	357	385	306	49	101	69	82	112	55	207	490	49				
Ormersá	123	117	147	275	286	119	124	54	45	87	73	203	350	275	278	264	187	156	335	366	169	163	181	141	134	108	163	143	199	233	295	216	187	182	251	282	319	552	372	209	552	45				
Deildará	158	189	168	224	357	164	111	93	27	55	69	234	253	178	173	145	142	88	281	391	173	206	82	141	192	65	144	122	194	93	273	177	135	257	214	252	176	215	95	172	391	27				
Svalbarðsá	234	172	155	240	257	158	167	51	36	41	29	161	171	176	198	238	135	136	289	384	145	215	177	98	159	124	92	143	236	291	231	292	283	302	320	434	504	562	273	213	562	29				
Sandá	288	238	315	474	418	411	380	138	53	47	35	257	340	403	290	182	81	100	354	434	204	209	152	91	177	190	143	128	212	151	197	260	268	268	338	411	334	476	281	249	476	35				
Hölkna	135	118	92	219	130	66	73	26	26	25	11	109	121	131	144	105	91	55	150	130	45	78	44	36	53	47	59	77	84	105	84	140	135	101	130	171	185	181	81	97	219	11				
Hafrónsá og Kverka	343	302	227	312	276	264	180	36	60	52	25	132	223	296	361	313	223	123	266	402	147	234	222	221	260	254	315	303	294	237	206	365	424	481	585	501	610	403	166	273	610	25				
Möfjarðará við Bakka	147	144	183	248	242	135	80	39	15	39	32	116	168	206	186	235	136	101	192	172	60	170	96	101	145	116	108	98	165	152	141	195	155	198	203	236	349	392	220	157	392	15				
Selá í Vopnafirði	589	711	845	1463	1394	767	637	192	168	229	123	627	1258	1523	1102	895	634	772	1318	1092	631	1160	737	685	1140	991	1360	1108	1653	1558	1670	2316	2726	2227	2033	1990	2051	2053	1511	1178	2726	123				
Vesturdalsá	391	329	326	513	498	268	141	42	34	61	47	280	197	380	231	226	163	116	264	321	218	329	201	216	159	71	129	124	269	175	88	102	104	158	136	206	258	316	169	212	513	34				
Hofsá og Sunnudalsá	1277	1117	1253	1273	1336	599	615	145	141	258	185	1219	1631	1710	1210	809	552	642	2238	2028	1012	1028	826	607	1008	1020	804	906	1911	1483	1864	1965	2058	1423	1119	1141	1161	952	1018	1117	2238	141				
S																																														

**Table 17** Catch of brown trout in some Icelandic rivers 1987 - 2012. Migratory and stationary stocks are included.

River	Y E A R																						Average	Max	Min						
	1987	1988	1989	1990	1991	1992	1993	1994	1995	1996	1997	1998	1999	2000	2001	2002	2003	2004	2005	2006	2007	2008	2009	2010	2011	2012	catch	catch	catch		
Laxá í Leirársveit	157	251	194	219	221	223	180	183	153	157	116	189	239	176	209	406	179	241	97	104	75	46	92	80	53	52	165	406	46		
Andakilsá	4	6	1	5	0	2	1	0	3	1	7	3	4	8	4	2	67	9	3	3	6	11	2	4	1	7	6	67	0		
Hvítá í Borgarfirði	152	190	99	192	0	149	155	364	305	722	264	583	358	924	663	486	662	729	992	617	495	530	673	560	721	538	466	992	0		
Grimsá og Tunguá	71	49	49	74	4	216	108	357	188	30	136	213	189	250	291	313	175	339	119	171	174	143	74	51	250	99	159	357	4		
Þverá og Kjarrá	35	80	36	99	0	121	98	109	152	247	101	247	263	463	266	258	299	375	147	180	89	62	69	10	52	35	150	463	0		
Álfhá	29	46	57	108	184	191	156	220	251	261	298	332	324	443	338	179	238	309	269	189	211	103	141	78	100	119	199	443	29		
Hítará	5	17	14	30	23	23	39	0	34	61	33	25	30	29	28	38	36	42	43	27	13	41	33	50	34	2	29	61	0		
Hörðudalsá	7	0	5	8	0	0	0	0	0	0	0	0	0	0	0	0	0	0	0	0	0	0	0	0	0	0	1	8	0		
Miðá og Tunguá	0	0	0	1	0	4	0	1	0	0	0	0	0	2	2	0	0	0	0	0	0	0	0	0	0	0	0	4	0	0	
Haukadalsá neðri	0	0	1	0	0	4	0	0	0	0	0	0	0	0	1	1	0	0	1	0	0	0	0	0	1	2	0	0	4	0	
Haukadalsá efri	0	0	0	3	1	0	1	0	14	0	2	0	7	1	0	5	1	0	0	5	0	1	0	4	1	2	14	0	0		
Staðarhólsá og Hvolsá	3	2	3	2	6	3	1	2	1	2	4	2	2	2	3	1	3	28	0	0	2	0	2	0	0	0	3	28	0	0	
Fjarðarhornsá	0	2	1	0	0	0	0	0	0	0	0	0	0	0	0	0	0	1	3	6	1	1	0	0	1	1	6	0	0		
Selá í Steingrímsfirði	0	0	0	0	0	0	0	0	0	0	0	0	0	0	0	0	1	0	0	0	0	0	0	0	1	0	0	1	0	0	
Staðará í Steingrímsfirði	0	0	0	0	1	0	0	0	0	0	0	0	14	0	0	1	10	0	1	0	0	1	0	0	0	1	14	0	0	0	
Hrútafjarðará og Siká	1	1	0	2	7	1	0	0	2	1	2	0	1	0	1	2	4	0	2	5	2	2	0	2	0	4	2	7	0	0	
Miðfjarðará	20	16	7	58	41	6	10	7	9	3	2	2	15	6	9	6	22	37	12	26	41	50	42	64	15	20	21	64	2	0	
Víðidalsá og Fitjá	0	3	26	13	41	34	23	14	16	42	52	316	80	151	143	198	60	307	364	166	291	27	597	133	175	290	137	597	0	0	
Vatnsdalsá	366	685	245	667	571	506	335	388	450	318	300	617	520	695	807	670	729	729	684	1567	1509	1863	2021	2794	2700	2371	966	2794	245	0	
Gjúfúrá	8	1	3	5	19	7	26	1	9	6	407	4	6	0	24	1	1	7	25	15	7	15	5	14	5	25	407	0	0	0	
Fremri Laxá á Ásum	1069	2352	338	2965	4121	3911	2709	2744	2011	1301	2379	2567	2496	2980	3278	3666	3646	4602	3884	5279	4549	5456	4009	3376	3622	3199	3173	5456	338	0	
Húseyjarkvísl	60	7	12	426	476	483	369	540	373	349	407	373	349	397	277	559	587	427	330	397	597	644	600	868	635	630	432	868	7	0	
Hrölleifsdalsá	0	13	7	34	102	59	53	113	32	126	86	73	81	87	75	173	137	326	170	181	371	111	158	104	111	371	0	0	0	0	
Flókadalsá	87	27	93	111	109	54	82	0	81	29	36	169	244	263	249	419	401	398	311	181	237	0	560	538	195	560	0	0	0	0	
Fjótá	0	3	0	10	0	0	0	0	0	1	0	0	1	0	0	1	0	0	1	0	0	1	0	0	1	6	13	2	13	0	0
Svarfaðardalsá	24	24	24	24	44	23	40	18	44	26	39	30	52	156	111	80	61	123	65	42	119	228	186	281	85	281	18	18	18	18	
Hörgá	23	79	25	24	38	11	46	43	26	36	39	31	8	43	93	49	25	95	138	259	306	269	357	90	357	8	8	8	8	8	
Eyjaþingará	34	49	26	67	165	86	100	153	130	146	138	142	169	241	202	352	418	483	389	232	116	90	268	411	396	657	218	657	26	0	
Fnjóská	20	8	14	14	31	25	12	45	27	31	53	25	44	22	28	40	73	79	111	49	42	63	119	201	90	195	56	201	8	0	
Skjálfafljót	591	99	150	119	79	88	44	53	6	18	25	89	69	17	70	55	35	68	50	69	171	119	180	33	56	32	92	591	6	0	
Laxá í Aðaldal	835	894	1079	1275	1465	1286	1307	705	900	594	929	1068	1232	1647	1796	1542	905	1386	1513	1149	1125	271	1329	613	571	334	1067	1796	271	0	
Laxá ofan Brúa	0	3158	4861	4247	2792	2613	2316	1942	2281	2478	3700	7947	6313	6522	5863	4526	5091	6293	7915	7714	6909	4547	2013	4501	4549	4853	4459	7947	0	0	
Litlaá	710	610	422	784	684	730	583	464	416	269	427	466	512	1662	922	1022	1014	626	393	619	587	829	1038	1289	1659	749	1662	269	0	0	
Omarsá	35	50	21	20	31	28	15	42	9	33	17	11	18	35	44	42	97	92	82	56	79	80	53	64	171	179	54	179	9	0	
Selá í Vopnaf.	3	8	10	14	9	2	4	2	8	9	6	5	14	8	5	9	7	18	3	4	4	5	4	0	12	12	7	18	0	0	
Vesturdalsá	3	1	9	5	4	4	0	6	1	1	0	0	19	2	0	0	0	0	0	2	0	2	3	1	0	9	3	19	0	0	
Hofsá og Sunnudalsá	11	8	53	31	50	43	54	22	24	30	49	32	29	39	27	34	58	133	113	75	130	109	87	121	101	133	61	133	8	0	
Gílsá og Selfjót	33	12	15	72	70	53	39	20	27	45	77	67	34	88	54	65	93	92	240	133	215	174	167	325	178	246	101	325	12	0	
Breiðdalsá	197	31	15	148	169	245	117	307	242	306	375	214	146	143	315	285	517	549	657	517	309	306	282	396	205	450	286	657	15	0	
Geirlandsá	362	303	356	193	88	109	108	118	251	235	389	274	151	237	159	193	140	404	231	187	205	357	211	339	235	143	230	404	88	0	
Skaftá	977	715	725	221	436	366	464	612	388	813	969	407	456	550	836	1305	1152	1093	1038	1171	689	807	1039	1470	470	828	769	1470	221	0	
Eldvatn í Meðallandi	84	170	92	35	27	38	112	129	171	192	161	215	57	53	58	78	76	151	168	172	168	245	192	252	197	223	135	252	27	0	
Grenlækur	1297	1001	823	1815	1648	1664	2138	3392	4787	3783	2493	1679	1293	1264	864	1331	1189	1700	1429	940	828	678	623	905	970	1099	1601	4787	623	0	
Tungufljót	62	67	148	84	134	249	156	174	239	384	224	273	286	286	347	345	529	380	324	414	276	271	283	240	267	253	529	62	0	0	
Heiðarvatn	215	399	301	373	284	255	116	102	212	269	277	326	609	378	410	410	410	410	410	410	410	410	410	410	410	410	302	609	102	0	
Rangár og Fiská	179	163	527	359	337	230	393	635	468	487	494	547	216	772	934	594	398	470	80	306	359	413	178	415	934	80	80	80	80	80	
Ólfusá	60	29	44	70	52	58	366	53	103	161	513	399	301	911	741	1006	227	797	246	71	98	331	94	613	418	310	1006	29	0		
Sog	2	6	8	6	10	7	6	11	15	29	23	37	40	28	27	43	22	34	104	63	55	66	31	70	146	56	36	146	2	0	
Hróarholtslækur	403	550	465	322	391	449	301	580	374	326	492	1011	680	765	931	949	924	920	1266	914	980	833	878	712	757	557	682	1266	301	0	

**Table 18.** Catch of Arctic charr in some Icelandic rivers 1987 - 2012. Migratory and stationary stocks are included.

River	Year																								Average	Max	Min			
	1987	1988	1989	1990	1991	1992	1993	1994	1995	1996	1997	1998	1999	2000	2001	2002	2003	2004	2005	2006	2007	2008	2009	2010	2011	2012	catch	catch	catch	
Laxá í Leirársveit	0	7	7	1	4	6	18	14	21	4	35	62	42	43	124	48	24	30	5	7	8	6	12	12	11	7	21	124	0	
Andakilsá	10	231	284	479	3	341	0	3	218	189	238	116	84	131	294	194	203	282	147	49	28	21	47	12	3	18	139	479	0	
Hvítá í Borgarfirði	27	9	15	19	613	88	106	14	12	4	4	78	11	2	886	653	601	664	342	312	26	253	287	133	22	24	200	886	2	
Grímsá og Tunguá	1	2	2	24	250	12	3	6	1	1	0	4	4	1	7	4	1	2	1	1	6	1	4	5	3	1	13	250	0	
Pverá og Kjarrá	3	9	111	76	113	14	35	25	9	7	63	2	5	8	19	13	15	10	3	5	1	2	0	1	4	2	21	113	0	
Álftá	0	1	2	1	4	6	10	9	2	3	6	6	0	7	0	4	2	3	0	5	0	0	0	0	2	1	3	10	0	
Hítará	193	134	132	234	518	396	184	0	259	131	426	7	344	146	136	129	126	80	57	23	58	34	47	35	14	2	148	518	0	
Hörðudalsá	18	291	231	614	451	340		271	423	361	1021	1003	453		907		81	80	11		223	39	6	15	48	328	1021	6		
Miðá og Tunguá		73	70	470	478	650	530	411	674	350	396	825	925	591	1009	593	273	432	184	120	328	350	125	121	152	277	416	1009	70	
Haukadalsá neðri	679	7	21	8	74	8	57	111	71	8	36	12	58	42	22	19	50	30	21	20	17	2	8	7	25	18	55	679	2	
Haukadalsá efri		22	14	237	919	149	267		590	739	593	892	949	731	93	644	453	276	278	135	240	367	64	370	151	163	389	949	14	
Staðarhólsá og Hvolsá	401	224	338	941	882	397	616	733	934	1490	1316	1469	1016	949	583	439	487	1000	375	323	549	283	379	234	124	81	637	1490	81	
Fjarðarhómsá	20	107	306	562	536	233	73	80	135	165			47		93	129	116	179	100	273	184	185	53	52	22	36	160	562	20	
Selá í Steingrimsfirði	261	12		229	334	259	77	404	145	356			171	246	529	0	90	68	640	217	81	81	195	54		96	98	212	640	0
Staðará í Steingrimsfirði	584	35	13	183	385	265	254	163	201	92	164	288	76	297	275	84	550		107	34	44	234	72				200	584	13	
Hrútafjarðará og Síká	269	59	68	221	532	192	135	129	221	499	363	564	346	610	358	221	303	180	158	159	100	213	66	148	119	114	244	610	59	
Miðfjarðará	236	167	89	221	273	152	97	123	144	47	267	304	277	97	316	148	225	235	180	216	61	256	299	122	71	100	182	316	47	
Víðdalsá og Fitjá	1325	366	26	377	547	467	676	1214	3485	2782	1551	5568	3824	3138	1903	1143	2144	3004	1118	1460	1725	213	986	1728	1016	1106	1650	5568	26	
Vatnsdalsá	727	1182	270	1642	1851	1112	1427	1058	812	2498	1861	1438	2755	2712	1919	1975	1430	1186	779	724	1000	1478	1340	1345	1319	1254	1427	2755	270	
Cjúfurá	0	0		1	273	75	1	6	192	41	52	4	665	1	9	1	16	3	36	58	4	86	4	394	151	176	90	665	0	
Fremri Laxá á Ásum	137	236	15	34	52	35	6	26	41	61	52	64	27	153	53	23	8	12	0	3	3	0	4	2	13	0	41	236	0	
Húseyjarkvísl	7	2	8	64	28	17	32	44	48	45	30	46	17	8	18	14	27	12	6	27	14	25	10	7	3	2	22	64	2	
Hrollleifsá		47	45	221	401	410	381	628		218	198	377	325	311	281	397	409	346	261	166	152	159	196	329	203	266	280	628	45	
Flókadalsá	110	1028	280	2134	2198	1144	1040	1673	489	265	1135	655	2405	775	1539	1169	2279	2473	1084	499	380	528	283	1634	1223	965	1130	2473	110	
Fljótaá		1	44	627	643	881	1242	7071	6928	6931	1648	893	792	944	298	164	288	508	215	357	208	438	1255	1493	1978	1942	1512	7071	1	
Svarfaðardalsá				873		1049	668	1691	358	417	475	526	704	560	842	378	310	407	311	567		400	1058	825	343	643	638	1691	310	
Hörgá				1692	1394	1238	1783	1590	1063	1245	1293	1229	856	1216	1373	1110	935	964	896	670	860	843	794	1054	739	769	1113	1783	670	
Eyjafljótaá	1557	1467	127	2123	2836	3095	3080	3319	2151	2098	3625	3137	2900	2620	2931	1954	1678	2052	1516	916	610	723	672	736	593	458	1884	3625	127	
Fnjóská	496	217	238	390	469	239	251	550	391	339	409	579	700	612	695	370	736	545	355	781	598	850	474	583	485	626	499	850	217	
Skjálfandaflljót	275	338	561	391	331	160	173	198	151	214	506	403	658	1034	356	357	338	239	116	218	292	397	402	217	234	153	335	1034	116	
Laxá í Aðaldal	35	187	114	137	86	48	114	57	52	29	64	52	48	115	121	91	37	27	22	8	25	2	15	26	17	3	59	187	2	
Laxá ofan Brúa	0	19	63	16	10	3	5	1	3	7	42	412	145	41	5	4	8	16	21	16	7	2	1	1	5	6	33	412	0	
Litlaá		297	307	310	368	551	259	220	193	131	104	97	123	117	388	199	249	97	110	31	67	128	77	202	268	248	206	551	31	
Ormarsá	245	114	141	181	175	127	131	126	103	101	68	93	129	128	56	62	53	30	109	60	69	54	52	20	239	211	111	245	20	
Selá í Vopnaf.	249	56	52	211	105	103	51	106	84	164	115	37	55	72	53	49	63	60	50	18	33	12	32	16	13	23	72	249	12	
Vesturdalsá	506	51	78	513	1402	726	321	383	474	872	1080	457	815	864	1079	502	1002	557	342	223	241	417	370	412	173	563	555	1402	51	
Hofsá og Sunnudalsá	357	32	143	67	357	471	268	261	183	344	250	246	557	744	30	207	276	559	247	154	247	152	385	393	130	407	287	744	30	
Gílsá og Selfljót	230	61	71	455	382	368	242	381	261	532	421	221	340	375	469	426	447	491	429	347	310	304	178	295	130	159	320	532	61	
Breiðdalsá	453	74	70	600	22	23	410	369	977	396	197	235	415	601	1121	567	628	881	1193	405	263	412	354	188	94	79	424	1193	22	
Geirlandsá	60	69	48	29	50	43	40	39	48	43	28	26	27	54	44	50	44	38	21	8	3	29	32	14	9	13	35	69	3	
Skaftá	17	19	12	1	5	7	19	28	13	21	16	19	27	42	25	33	14	13	5	25	12	25	18	17	15	18	42	1	1	
Eldvatn í Meðallandi	21	22	3	21	3	27	19	6	60	114	61	29	27	16	50	48	39	61	19	67	24	56	42	61	40	18	37	114	3	
Grenlækur		78	12	151	247	177	288	273	403	290	294	223	114	128	212	283	209	267	252	145	84	99	48	50	17	33	175	403	12	
Tungufljót	63	37	28	107	65	46	43	85	67	60	53	52	52	40	66	130	62	79	74	23	6	6	18	46	34	39	53	130	6	
Heiðarvatn			106	203	213	319	159	296	131	89	498	616	385	331	1021	188	433										333	1021	89	
Rangár og Fiská				75	65	106	90	83	94	165	150	72	54	95	88	75	89	50	40	20	15	16	54	35	63	218	79	218	15	
Ölfusá			8	7	12	17	12	10	72	40	20	30	21	11	16	26	26	21	16	7	6	4	4	2	4	6	1	16	72	1
Sog	255	312	227	426	558	173	130	209	316	914	754	860	455	451	765	752	529	508	449	102	177	198	279	99	150	154	392	914	99	
Hróarholtslækur	13	134	110	144	84	172	92	136	169	360	80	113	96	55	52	84	38	65	21	13	4	12	27	5	8	1	80	360	1	

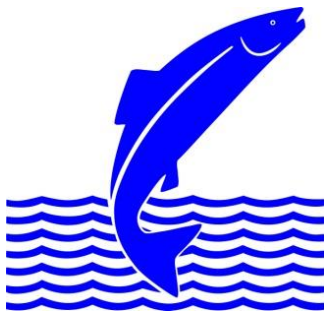
**Table 19.** Catch, by region in netfisheries in 2012 in numer and weight (kg).

Area Area/River	Atlantic salmon		Brown trout		Arctic charr	
	number	weight	number	weight	number	weight
<b>Reykjanes Total</b>	<b>0</b>	<b>0</b>	<b>0</b>	<b>0</b>	<b>0</b>	<b>0</b>
Borgarfjörður netaveiði í sjó	1	3	223	209	30	16
Hvítá Borg. neðri hluti	1	9	62	58	40	35
Hvítá efrihl. og Norðurlingfl.	67	130	8	9	51	43
<b>Vesturland Total</b>	<b>69</b>	<b>142</b>	<b>293</b>	<b>276</b>	<b>121</b>	<b>94</b>
<b>Vestfirðir Total</b>	<b>0</b>	<b>0</b>	<b>0</b>	<b>0</b>	<b>0</b>	<b>0</b>
Amarvatn-Stóra			1422	1593	101	118
Héraðsvötn	5	14	52	53	338	256
Norðurá *						
Miklavatn í Fljótum *						
<b>Norðurland vestra Total</b>	<b>5</b>	<b>14</b>	<b>1474</b>	<b>1646</b>	<b>439</b>	<b>374</b>
Skjálfafljót	36	123			373	295
Vestmannsvatn *						
Mývatn			3091	3091	959	959
<b>Norðurland eystra Total</b>	<b>36</b>	<b>123</b>	<b>3091</b>	<b>3091</b>	<b>1332</b>	<b>1254</b>
Lagarfljót	39	117				
<b>Austurland Total</b>	<b>39</b>	<b>117</b>	<b>0</b>	<b>0</b>	<b>0</b>	<b>0</b>
Skaftá	3	7	102	107	7	4
Kúðafljót	41	189	128	495		
Mjóásvatn (Álftaveri) *						
Markarfljót Álár	2	7	2	5	0	0
Veiðivötn			2187	4203	3050	1556
Kvíslaveitur *						
Þjórsá	2194	5473	660	1406	0	0
Laugarvatn *						
Apavatn			10634	4990	11994	3942
Úlfjótsvatn *						
Hvítá í Árnassýslu	674	1999	146	344	54	99
Ölfusá	696	2009	154	354	14	14
<b>Suðurland Total</b>	<b>3610</b>	<b>9684</b>	<b>14013</b>	<b>11904</b>	<b>15119</b>	<b>5615</b>
<b>All areas Total</b>	<b>3759</b>	<b>10080</b>	<b>18871</b>	<b>16917</b>	<b>17011</b>	<b>7337</b>

\* no records







## **Veidimálastofnun**

Keldnaholt, 112 Reykjavík

Sími 580-6300 Símbref 580-6301

[www.veidimal.is](http://www.veidimal.is) [veidimalastofnun@veidimal.is](mailto:veidimalastofnun@veidimal.is)



Ásgarður, Hvanneyri  
311 Borgarnes



Brekkugata 2  
530 Hvammstangi



Verið, Háeyri1  
550 Sauðárkrúkur



Austurvegur 3-5  
800 Selfoss