

Catch statistics for Icelandic rivers and lakes 2011

Guðni Guðbergsson



VEIÐIMÁLASTOFNUN
Institute of Freshwater Fisheries

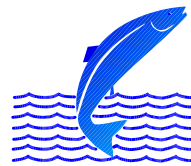


.....
F I S K I S T O F A

VMST/12033

Catch statistics for Icelandic rivers and lakes 2011

Guðni Guðbergsson



VEIÐIMÁLASTOFNUN
Institute of Freshwater Fisheries



FISKISTOFA
Directorate of Fisheries

Institute of Freshwater Fisheries
Keldnaholt, 112 Reykjavík

Directorate of Fisheries
Dalshrauni 1, 220 Hafnarfirði

Reykjavik, June 2012

Content

Introduction.....	1
Methods.....	2
Results.....	3
The catch in 2011.....	3
Sea-age composition of the salmon catch.....	5
Discussions.....	6
Acknowledgements.....	7
Referances.....	7
Figures	9-13
Tables.....	14-31

Introduction

There are five native fish species in freshwater in Iceland. These are the salmonid species, Atlantic salmon (*Salmo salar*), brown trout (*Salmo trutta*) and arctic charr (*Salvelinus alpinus*). The other two are, European eel (*Anquilla anquilla*) and three-spined sticklebacks (*Gasterosteus aculeatus*). Of these species salmon has the highest economic value.

The fishing season in Icelandic rivers is at the maximum of 105 days in the period from 20th of May to 30th of September. In rivers where salmon fishery is mainly based on release of reared salmon smolts the fishing season can be extended to 120 days and throughout October with permission from the Directorate of Fisheries (Fiskistofa). The daily fishing period is usually 12 hours, and the fishery must be closed for 84 hours each week. In most Icelandic rivers rod and line is the only fishing gear allowed. A fixed number of rods are used in each river. The fishing effort has remained almost unchanged since 1970. Each Fishery association needs to make a plan that outlines the management strategy. The management plan needs approval by the Directorate of Fisheries after a review by the Institute of Freshwater Fisheries.

Net fishery is almost exclusively in the largest glacial rivers. In the net fishery gillnets are the most common fishing method and draftnet are used at few locations for brown trout and Arctic charr. The weekly net fishing period is from Tuesday morning at 10 AM to Friday evening at 10 PM. The weekly fishing period in net fisheries is 84 hours, the same as in the rod fishery. The weekend closure is to reduce fishing effort and allow fish migration to the up rivers regions.

There has been a general ban on ocean salmon fishing in Icelandic waters since 1932. An exception to that were few localities with coastal fishery at the coast of west Iceland (Vesturland) (Figure 1). At these localities coastal gillnets were used set from land. These fishing rights were permanently bought out in 1997 by fishery associations in nearby rivers and with governmental support. This was possible since salmon caught by anglers are of much higher value than salmon caught in the net fishery. All salmon harvested in Iceland is in freshwater and mostly based on single stock fishery.

The fishing rights go with the ownership of the land adjacent to the rivers. The landowners are usually farmers. All the landowners of the fishing rights in a river system have by law to form a fishery association, which manages the exploitation of the fish stocks, within the frame set by the law. Usually the rivers fishery association rents or leases the fishing rights to angling syndicates, angling clubs or directly to anglers. The entire riverbank is accessible to the

limited number of rod fishermen that have fishing permit each day. Most rivers have fishing lodges with high quality accommodation.

The catch is recorded in special logbooks in the fishing lodges. The logbook recording system was established in 1946. At the end of the fishing season the logbooks from every river are gathered and statistical information are processed by the Institute of Freshwater Fisheries. The results are sent back to the fisheries associations as well as new logbooks before the next fishing season.

Catch statistics from Icelandic rivers and lakes for the 2011 fishing season have now been processed and the main results are summarized in this report. This work is based on Gudbergsson (2012), Lax- og silungsveiðin 2011, a report from the Institute of Freshwater Fisheries (in Icelandic). The Atlantic salmon, brown trout and Arctic charr catch statistics have been compiled this way since 1987.

Methods

Iceland is divided into statistical regions regarding to salmon catches (Figure 1). Information on the catch is summarized in tables for each region. The results from all regions are then combined for the whole country. The catch statistics for each river is summarized by fishing gear used. The harvesting methods used are rod and line, gillnets or draft-nets. The number of fish released (catch and release) from the rod fisheries are recorded. In previous years ocean ranching harvest has also been summarised. However, there has not been any release of smolts for commercial ocean ranching of salmon since 1998.

By tradition, the weight of freshwater fish in Iceland was measured in pounds where 1 pound = 500 g. In 1999 this was changed to kg and the accuracy of 0,1 kg was anticipated. Fish length is measured to the nearest cm. For each fish, date of catch, pool name and number, type of bait, catch-and-released, as well as the fisherman is recorded in the logbook. Fishing pools are commonly numbered in the logbooks for ease of computer processing.

The salmon catch can be divided by weight into grilse (1SW, one sea winter) and salmon (2SW, two sea winter). Males up to 4 kg and females up to 3.5 kg are grilse (one sea winter) and larger fish are salmon (multi sea winter) where off the vast majority is two sea winter salmon. This deviation into sea age has been confirmed with aging by scales (Scarnecchia 1983). Salmon with more than 2 winters at sea are rare in Iceland and repeated spawning has been in low percentages in later years.

Brown trout and Arctic charr are caught in many rivers as a by-catch with the salmon. In other rivers these are the most dominant and targeted fish species. In some rivers brown trout and Arctic charr are the dominant species at certain parts of the rivers especially at slow flowing areas at the lower parts of the rivers. In this report stationary trout and sea-trout were combined, and the same applies for sea-run Arctic charr and stationary Arctic charr.

In the rod fishery catch-and-release has been increasing in popularity usually on voluntarily basis by the anglers but in few rivers catch and release is the only allowed fishing method. Many rivers have fly fishing only and bag limit of different magnitude is common. In most recent years, anglers have been encouraged by the Institute of Freshwater Fisheries, the Federation of Icelandic river owners and the Association of Icelandic angling clubs to release two-sea winter salmon in order to protect the two-sea winter salmon stock component. The catch statistics is processed for both the total catch including catch and released and the catch landed in numbers of fish and weight. Measure of length is more common than measure of weight for released fish. In cases where length is the only measure a known length weight relationship is used to calculate weight as a basis for determination of sea age.

In Iceland the rod catch in few rivers is based on release of hatchery reared salmon smolts. The catch in these rivers were close to 13 thousand fish in 2011 and 23% of the total salmon rod catch. The catch in these rivers is reported separately since catch figures are often used as a measure of stock abundance of wild salmon and as a measure of spawning stock size. Unlike rivers with wild salmon populations, most of the rivers with releases of hatchery smolts for angling fishery have poor nursery areas and the returning adult fish do not contribute to spawning stock.

Results

The salmon catch in 2011

A total of 55.706 salmon were caught in rod fisheries in Icelandic rivers in 2011 where of 16.839 (30,2%) was released and the catch landed (caught and retained) was 38.876 salmon (Table 1). The catch landed by weight was 103.750 kg. In the rod fishery the catch of grilse (1SW) were 34.013 fish (87,6%) and 79.176 kg and 4.836 salmon (MSW) (12,2%) weighing 24.576 kg. Of the total number of released fish 9.476 (56,3%) were grilse and 7.363 (43,7 %) salmon. Of the statistical regions the highest number of fish was caught in the rod fishery in the Vesturland region 17.976 fish where off 3.967 were released and the catch landed was 14.009 fish and 34.293 kg. There were fewer fish recorded in other areas (Table 1).

The catch in the net fishery was 8.729 fish and 24.269 kg in total. In the net fisheries the highest number of fish was caught in the Sudurland region, 8.499 fish and 23.599 kg (Table 2). Of the net catch 6.836 fish was grilse (1SW) weighing 15.054 kg and 1.893 salmon (MSW) weighing 8.895 kg.

The total combined salmon catch landed (rod and nets) in Iceland 2011 was 47.596 fish and 128.019 kg, there of 40.867 (85,9%) were 1SW and 6.727 (14,1%) MSW. The total 1SW catch was 94.230 kg and the MSW catch was 33.469 kg (Table 3).

The total number of brown trout caught in rod fishery was 43.139 fish, 8.087 were released and the catch landed was 35.026 fish and 41.971 kg (table 4). The total number of Arctic charr in the rod fishery was 25.436 fish, 2.544 were released and the catch landed was 22.892 fish and 16.976 kg.

The salmon rod catch in 2011 was 19.255 fish (25,7%) lower than in the 2011 salmon season (table 5; figure 2). The total rod catch in 2011 was 39,6% higher than the average catch in the 37 years period from 1974 to 2010. The salmon catch in the net fishery was 7.174 fish (45,1%) lower than the catch in 2010 and 25,9% lower than the average catch in the period from 1974-2010 (Table 5, Figure 3).

In 2011 the rod catch in rivers where the catch is mainly based on releases of hatchery reared smolts was 13.417 fish that is 24,1% of the total catch and the catch was close to 30,6 tonnes. The rod catch of wild salmon in 2011 was 35.551 fish (Table 5, figure 3). In total 30,2% of the salmon rod catches was released and 36,6% of the wild salmon was released in the rod fishery.

No commercial ocean ranching activities have been operating since 1998. In previous years, substantial activities of ocean ranching with Atlantic salmon was operated in Iceland reaching up to 168 thousand fish caught in 1993 as the highest catch (harvest) (Table 5; Figure 4).

The highest number of salmon caught in rod fishery was in River Ytri-Rangá 4.618 fish with River Eystri-Rangá in second place with 4.398 fish. The angling fishery both these rivers are based on releases of hatchery smolts. The angling catch in River Midfjardará came in third place with 2.365 wild salmon. The list of top 10 salmon rivers is shown in table 6. The top 3

list for catch landed was the same for Ytri-Rangá and Eystri-Rangá but River Blanda was in the third place.

The top 10 list of brown trout is shown in table 7 and the top 10 list of Arctic charr is shown in table 8. The catch of brown in Iceland as a whole has been relatively stable for the past decade (Figure 5). The catch of Arctic charr has been generally decreasing since 2000 (Figure 6). The decrease in the Arctic charr catch may reflect the stock size and is causing serious concerns for the status of the spawning stocks in many rivers.

The rod catch records for individual rivers are listed by statistical areas in tables 9-15. The salmon catch in most Icelandic rivers are listed in table 16 for the period from 1974-2011 including average catch, maximum and minimum catch in the 38 years period. The rod catch for brown trout from 1987-2011 (25 years) is listed in table 17 and for Arctic charr in table 18.

The catches in the net fisheries divided by species, rivers and regions is listed in table 19. The highest salmon catch was in River Thjórsá with 4.945 fish.

Sea- age composition of the salmon catch

The sea-age composition of salmon is shown in figure 7. The figure includes the rivers with yearly catch records since 1970 and includes 88% of the average the annual salmon catch. It is worth noticing that after high catch in the 1980s the catch of 1SW salmon decreased after 1979 and increased after 1985. The MSW salmon showed similar pattern until 1980 but opposite to the improving catch of 1SW fish the MSW salmon stock component showed a decline from the mid 1980's to 2000. After 2000 the decrease of MSW salmon has stopped. Due to the decline of the MSW salmon component anglers are kindly asked to release MSW salmon in order to prevent the MSW component from overfishing and to conserve the MSW genetic resources in the salmon stocks.

Catch and release in the rod fishery has increased from 1996 when first recorded and was 30,2% of the total rod catch in 2011 but 36,6% of the wild salmon (Figure 8). Catch and release was 21,8% of the total grilse (1SW) fish and 27,4% of the wild grilse (Figure 9). The proportion of catch and release of salmon (MSW) was 60,4% in total and 64,9% of the wild salmon.

Discussions

Since 1932 there has been a general ban on ocean fishery for salmon in Icelandic waters with the exception of few locations with coastal fishery. The number of nets in rivers has been decreasing due to lease of nets, by river owner fisheries associations for not fishing. The fishing right in coastal areas was permanently bought-out in 1997 by river owners with support from the government. From 1997 all salmon in Iceland were harvested in freshwater. The number of rods allowed and used in Icelandic salmon rivers has been stable since 1970. With stable effort the catch figures can to large extent be used as an indicator for changes in size of the salmon run. It can also be seen from the catch statistics that the salmon catch in rivers in the same area show similar fluctuations. Rivers where fish counters are operated show that exploitation remains stable over time although exploitation is slightly higher in years when the salmon run is low (Jonsson, Antonsson and Gudjonsson 2008, Gudbergsson and Antonsson 2008).

In Icelandic rivers the MSW salmon is dominated by 2SW fish. Longer sea phase is rare and repeated spawning is in low percentages. The proportion of MSW fish is usually higher in rivers in the north and northeast Iceland than in the south and southwest regions. Since 1981-1983 the number of MSW salmon has been declining. This happened although the sex ratio of the run is stable with close to 65% females for MSW and 20% for 1SW for the period from 1973. That relates to higher mortality at the second year at sea in the later years (Gudbergsson and Gudjonsson 2003). The reasons for this is not clear but this seems relate to environmental conditions in the ocean (Gudjonsson et al. 1995) that are most likely poor feeding conditions for salmon at their second year at sea. These changes have affected the catch in rivers with high proportion of 2SW salmon and also the size of the spawning stock since MSW salmon are dominated by females that have double the number of eggs to the 1SW females.

There are considerable fluctuations between years in the salmon catch in Iceland. Usually salmon catch in rivers in the same region show similar fluctuations. The size of the salmon run depends on the number of smolts produced in each river and their sea survival. It seems that common factors affect the production of smolts in the rivers in the same area and also the sea survival. Climatic factors are of greatest importance and significant correlation has been found between the catch of grilse and ocean temperature at the time the smolts are migrating in the spring or early summer (Scarnecchia 1984; Antonsson et al. 1996).

The exploitation rate in the rod fisheries, in Icelandic rivers, has been estimated to be between 30-80% (Gudjonsson 1986). Recent information on exploitation in the rod fishery indicates that it can, in some rivers, be 50-60% for 1SW salmon and 60-80% for 2SW salmon

(Gudjonsson et al. 1996, Jónsson et al. 2008). In rivers with fish counters it has been shown that the rod catch reflects the changes in stock size. Further studies on exploitation and the size of the spawning stock in Icelandic salmon rivers are needed.

The brown trout catch was generally stable for the past 12 years the Icelandic rivers and lakes. Catch of Arctic charr on the other hand have shown a decrease from. Rivers in southwest Iceland have shown the steepest decline in the catches of Arctic charr. The reasons for the decline in catch of Arctic charr are not known but can possibly relate to global warming and lower temperature tolerance for the charr. The mechanism for this is not fully understood and needs further studies. There are concerns that many Arctic charr stocks in Southwest Iceland do not have any harvestable surplus. In this area the fishing right owners should take the necessary precautions for decreasing or stopping the exploitation before the size of spawning stock will become the limiting factor for the stock size.

Anglers are encouraged to record the trout and charr catch in the same manner as the salmon catch i.e. record each fish with information on length weight and sex of each fish. The catch records give valuable information on fluctuation in salmon stocks and stock compositions.

The continuous decline in the MSW salmon component is of major concern. The Institute of Freshwater Fisheries has encouraged the River Fisheries Associations to decrease the exploitation of the MSW salmon stock component.

Acknowledgements

Many of the staff at the Institute of Freshwater Fisheries has contributed to the compilation of the catch statistics in 2011. We are in thankful to River Fishery Associations, fishing right owners, various syndicates and last but not least individual anglers have contributed with recording there catch in the fishing log books.

References

Antonsson, Th., Gudbergsson, G. and Gudjonsson, S. 1996. Environmental continuity in fluctuation of fish stocks in the North Atlantic Ocean, with particular reference to Atlantic salmon. *North American Journal of Fisheries Management* 16:540-547.

Gudbergsson, G. and Antonsson. Th. 2008. Tengsl stofnstærðar, sóknar og veiðihlutfalls hjá laxi í Elliðaánum. *Fræðapening landbúnaðrins* 5:242-249.

Gudbergsson, G. 2012. Lax- og silungsveiðin 2011. Report from The Institute of Freshwater Fisheries, VMST/12032. 37 pp.

Guðni Guðbergsson og Sigurður Guðjónsson 2003. Marine mortality of Atlantic salmon in Iceland. pp 110-114. In: Marine mortality of Atlantic salmon, *Salmo salar* L: methods and measures. E.C.E. Potter, N. Ó Maoiléidigh og G. Chaput (Eds.) Canadian Science Advisory Secretariat. Research Document 2003/101.

Gudjónsson, Th. 1986. Exploitation of Atlantic Salmon in Iceland. In: Atlantic Salmon: Planning for the future. (ed.) Derik Mills and David Piggins.

Gudjónsson, S. Einarsson, S.M., Antonsson, Th. and Gudbergsson, G. 1995. Relation of grilse/salmon ratio to environmental changes in several wild stocks of Atlantic salmon (*Salmo salar*) in Iceland. Can. J. Fish. Aquat. Sci. 52:1385-1398.

Ingi Rúnar Jónsson, Þórólfur Antonsson og Sigurður Guðjónsson 2008. Stofnstærð lax (*Salmo salar*) og bleikju (*Salvelinus alpinus*) í samhengi við veiði. Fræðaðing landbúnaðarins. 5:234-241.

Jonsson, I.R., Antonsson, TH. and Gudjonsson. S. 2008. Icel, Agric. Sci. 21:61-68.

Scarnecchia, D.L. 1983. Age of sexual maturity in Icelandic stocks of Atlantic salmon (*Salmo salar*). Can. J. Fish. Aquat. Sci., 40:1456-1468.

Scarnecchia, D.L. 1984. Climatic and oceanic variations affecting yield of Icelandic stocks of Atlantic salmon. Can. J. Fish. Aquat. Sci., 41: 917-935.

Scarnecchia, D.L. 1984. Forecasting yields of two-sea-winter Atlantic salmon (*Salmo salar*) from Icelandic Rivers. Can. J. Fish. Aquat. Sci., 8:1234-1240.

Scarnecchia, D.L., Isaksson, A., White, S.E. 1989. New and revised catch forecasts for two-sea-winter Atlantic salmon (*Salmo salar*) in Icelandic rivers. J. Appl. Ichthyol. 5:101-110.

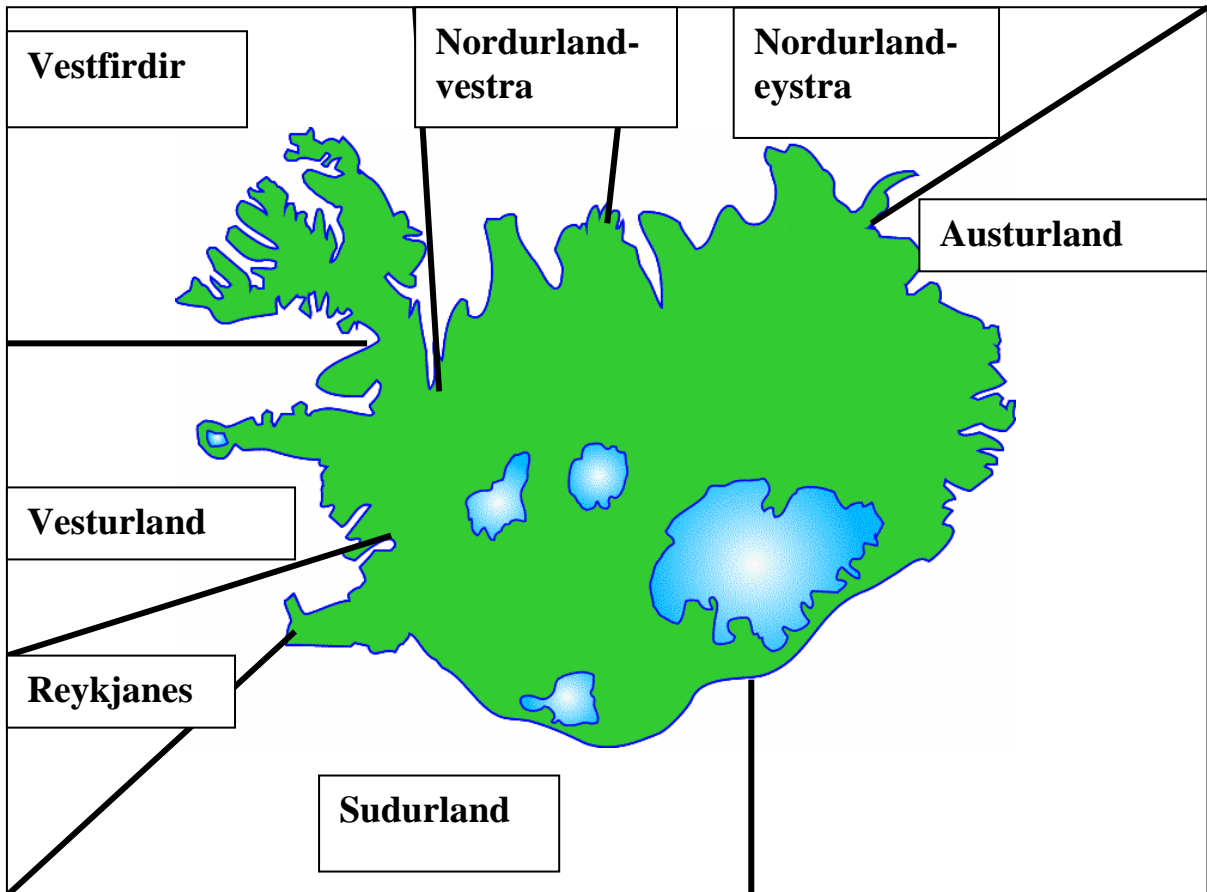


Figure 1. Statistical regions for the Atlantic salmon, brown trout and Arctic charr catch in Iceland.

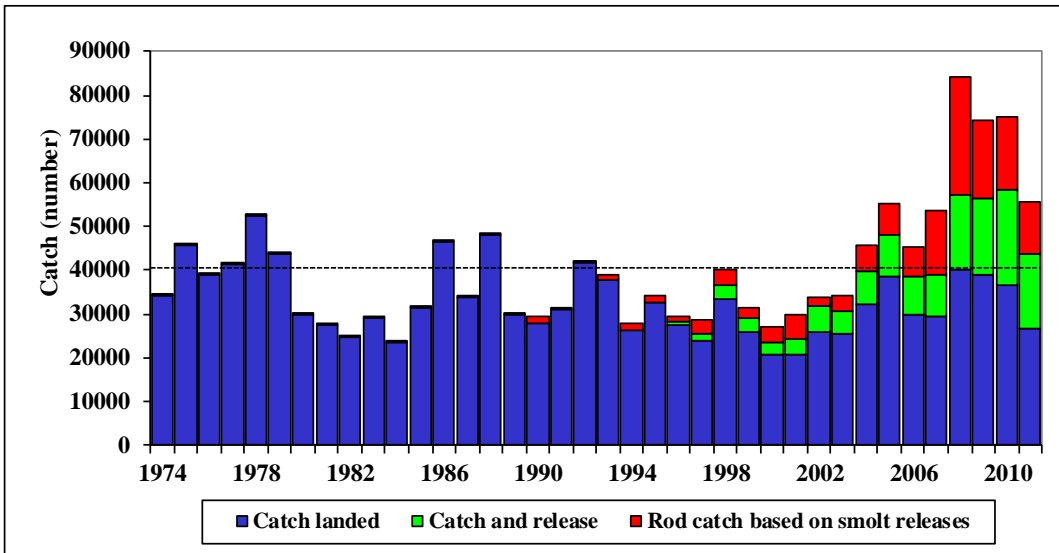


Figure 2. Salmon catch in rod and line fishery in Iceland 1974 - 2011. Catch landed (blue bars), catch and release (green bars) and catch in rivers with salmon fishery based mainly on smolt releases (red bars).

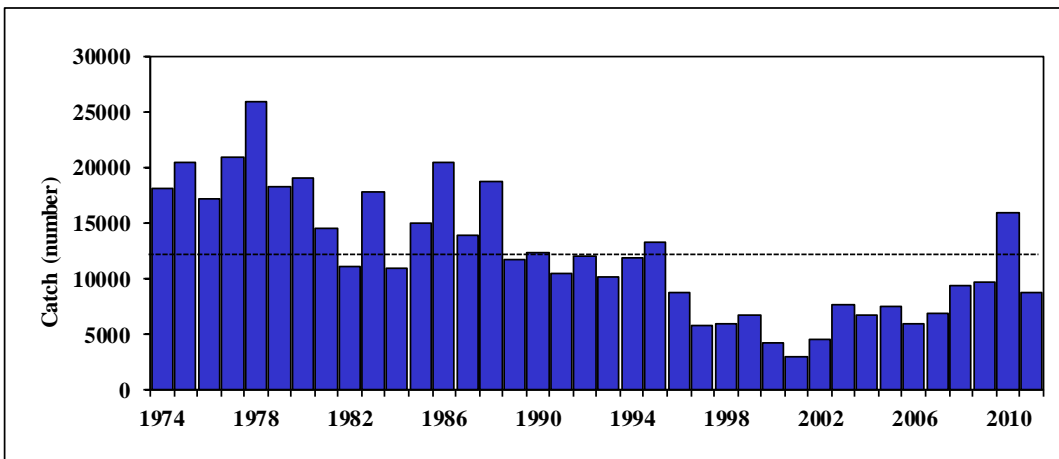


Figure 3. Salmon catch in gillnet fishery in Iceland 1974 - 2011.

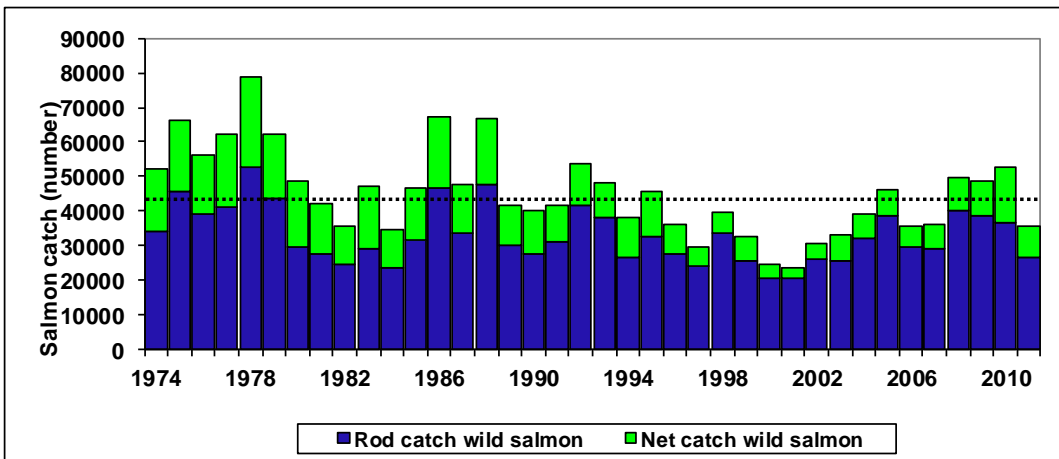


Figure 4. Salmon catch landed, wild salmon in rod fishery (blue bars) and net fishery (green bars) 1974-2011.

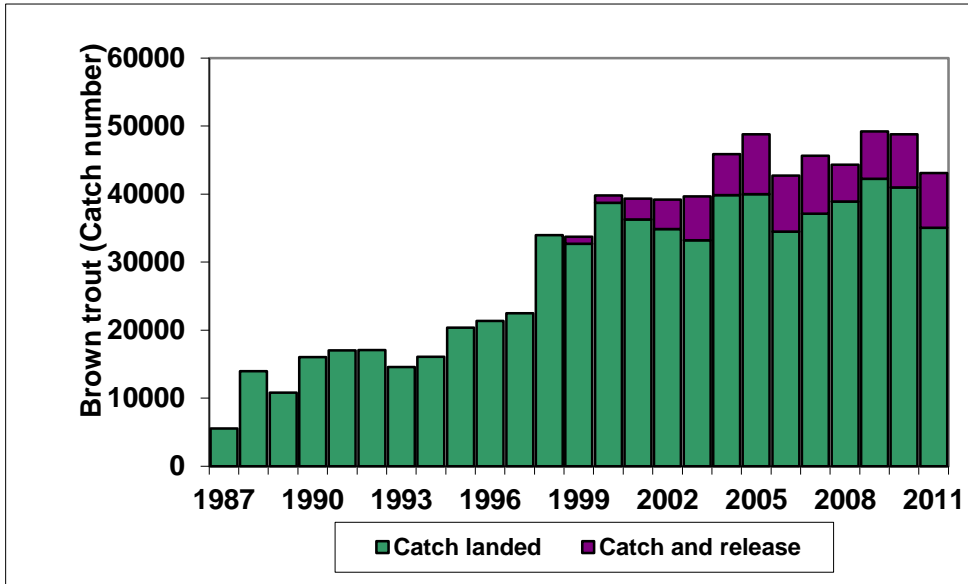


Figure 5. Catch and catch and released brown trout in the rod fishery in Iceland 1987-2011.

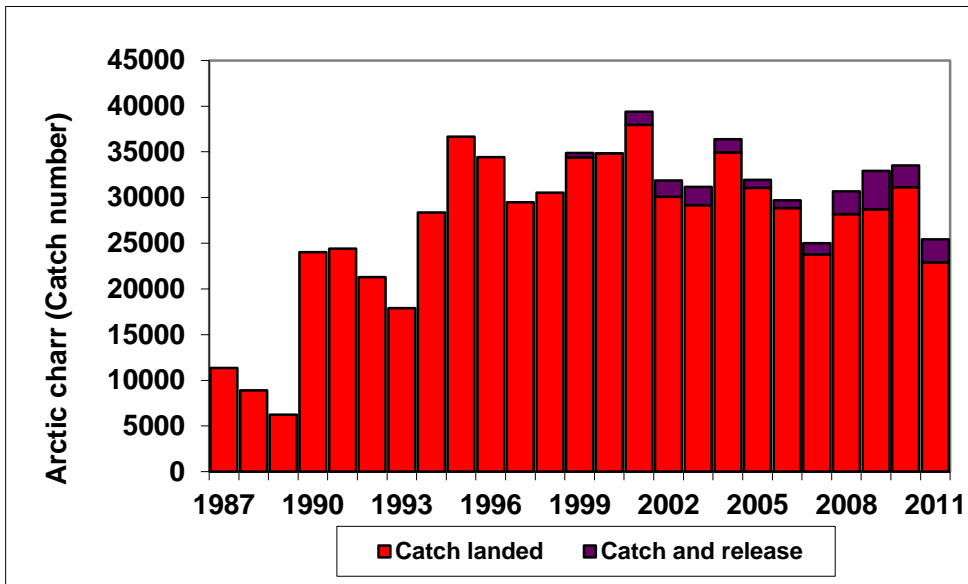


Figure 6. Catch and catch and released Arctic charr in the rod fishery in Iceland 1987-2011.

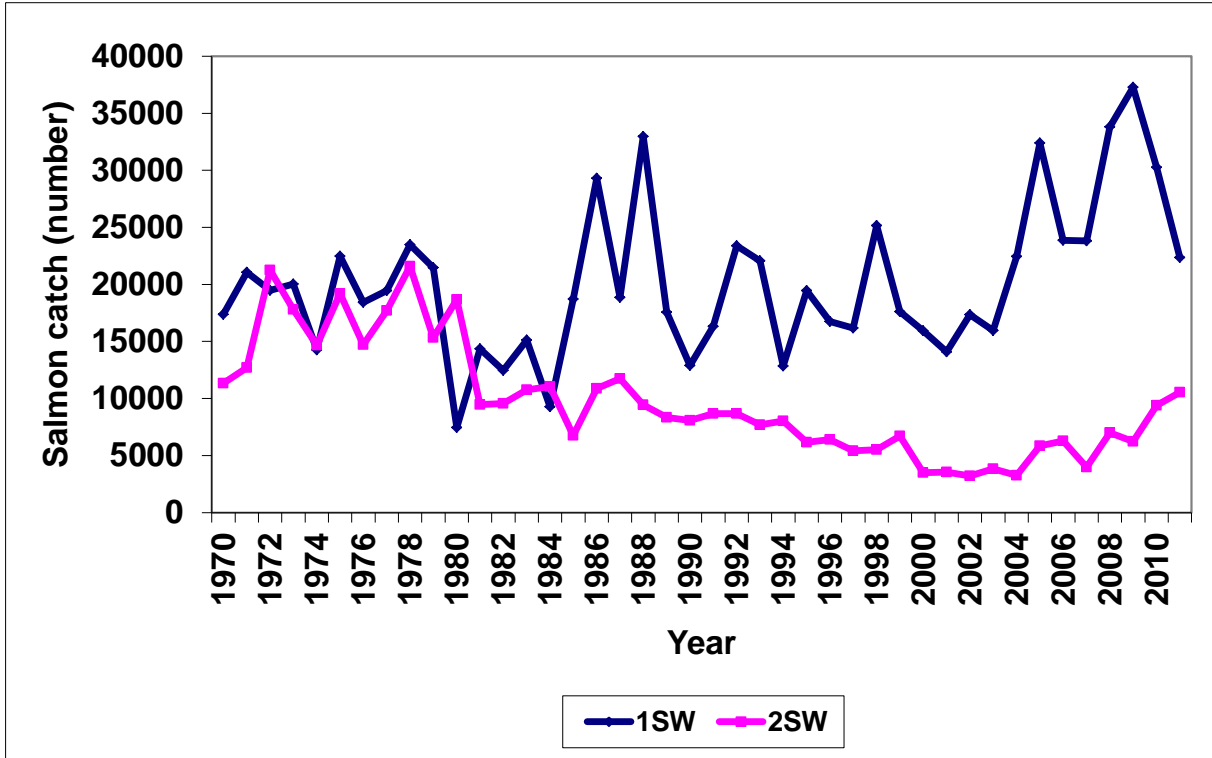


Figure 7. The sea-age composition of Atlantic salmon in rod catches in Icelandic rivers 1970-2011 (1SW = one-sea-winter, 2SW = two-sea-winter).

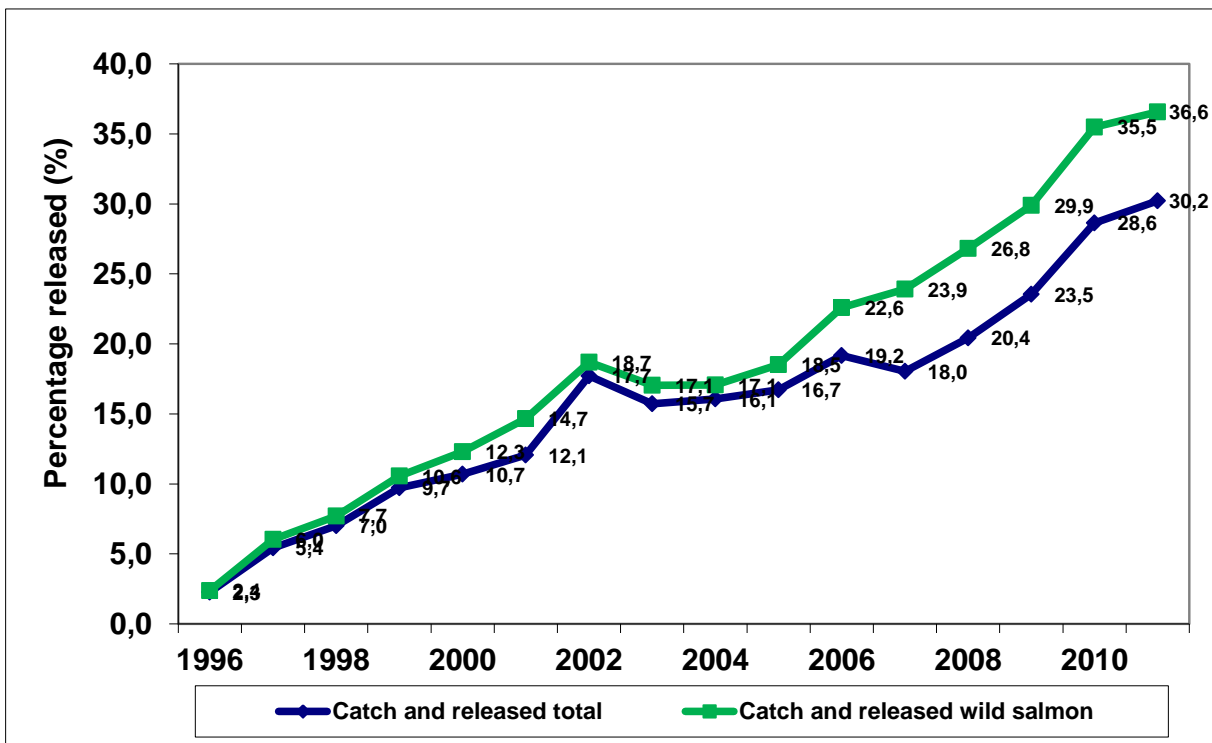


Figure 8. Percentage released salmon in the rod catch in Icelandic salmon rivers in 1996-2011 for the total catch and for wild salmon only.

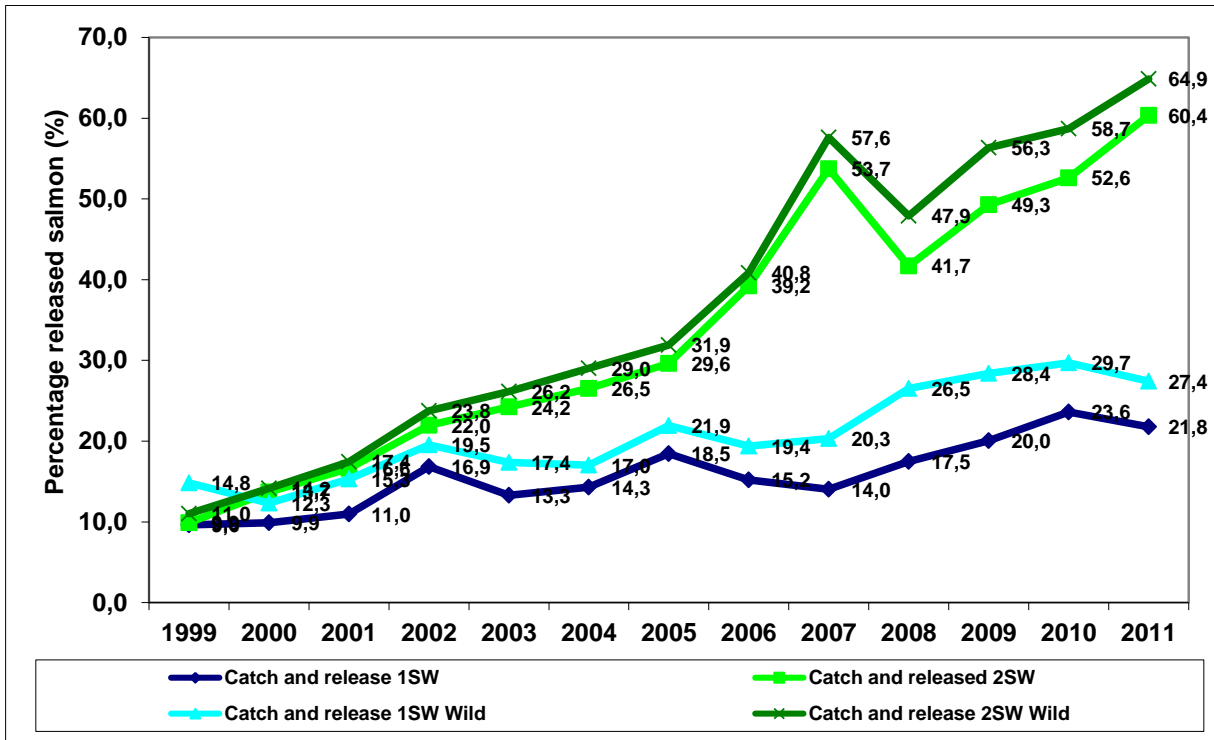


Figure 8. Percentage released fish in the rod catch in Icelandic salmon rivers in 1999-2011 for 1SW and 2SW salmon in the total catch and for wild salmon only.

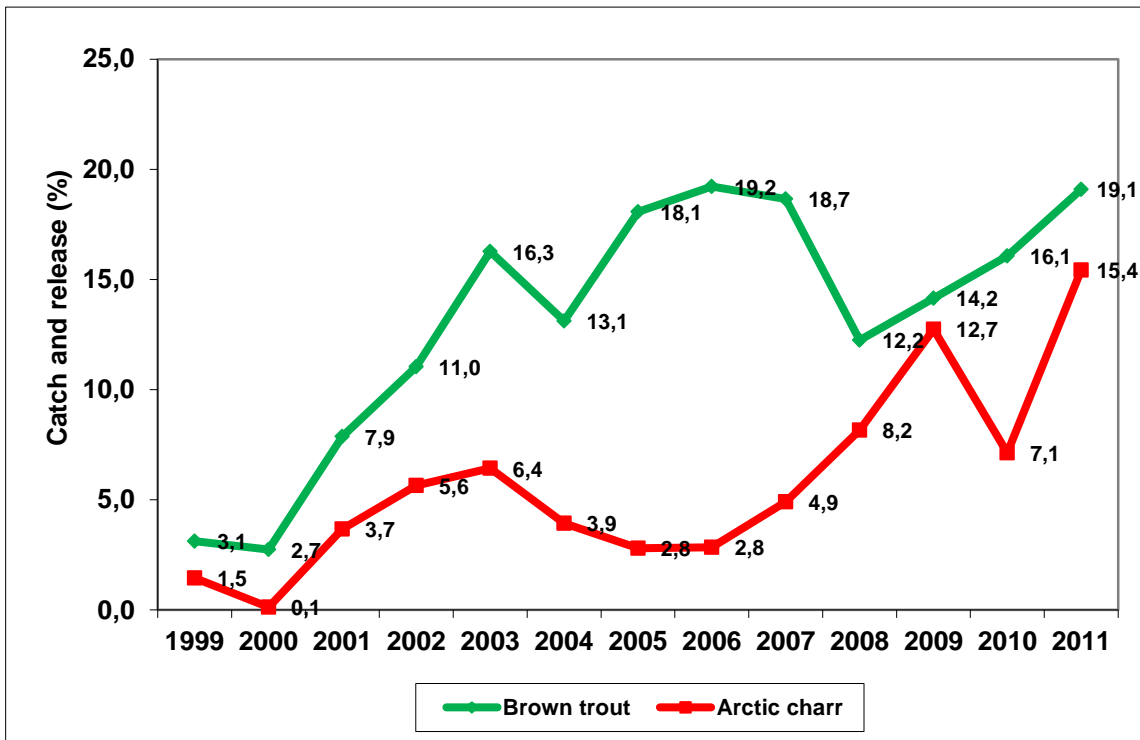


Figure 9. Percentage released brown trout and Arctic charr in the rod catch in Icelandic rivers and lakes in 1999-2011.

Table 1. Salmon catch, rod and line, in Icelandic rivers 2011.

Region	Salmon catch, rod and line											
	Catch	Released	Released	Released	Catch	Catch	Catch	MW	Catch	Catch	MW	Catch
	(number)	(number)	1SW	2SW	landed	landed	1SW	1SW	1SW	2SW	2SW	2SW
Reykjanes	3283	900	788	112	2383	5613	2310	2,28	5276	73	4,62	337
Vesturland	17976	3967	2914	1053	14009	34293	13226	2,30	30465	783	4,89	3828
Vestfirðir	1362	113	41	72	1249	3581	1012	2,36	2391	237	5,02	1190
Norðurland vestra	8144	3896	2197	1702	4248	13630	3133	2,48	7759	1115	5,27	5871
Norðurland eystra	5197	2822	974	1848	2375	8257	1497	2,44	3648	878	5,25	4609
Austurland	6106	3867	1652	2215	2239	6970	1684	2,52	4250	555	4,90	2720
Suðurland	13638	1274	913	361	12364	31406	11169	2,27	25387	1195	5,04	6019
Total	55706	16839	9479	7363	38867	103750	34031	2,33	79176	4836	5,08	24574

Table 2. Salmon catch, nets, in Icelandic rivers 2011.

Region	Salmon catch, nets						Ranched	
	Catch	Catch	Catch	Catch	Catch	Catch	Catch	Catch
	(number)	landed (kg)	1SW number	1SW (kg)	2SW (number)	2SW (kg)	(number)	(kg)
Reykjanes	0	0	0	0	0	0	0	0
Vesturland	153	414	100	230	53	184	0	0
Vestfirðir	0	0	0	0	0	0	0	0
Norðurland vestra	11	31	8	16	3	15	0	0
Norðurland eystra	52	177	40	128	12	49	0	0
Austurland	14	48	5	14	9	34	0	0
Suðurland	8499	23599	6683	14666	1816	8613	0	0
Total	8729	24269	6836	15054	1893	8895	0	0

Table 3. Total salmon catch in Icelandic rivers 2011, rod, gillnets and ranched.

Region	Salmon catch total (rod, nets and ocean ranched)						Percentage of total	
	Catch	Catch	Catch	Catch	Catch	Catch	Number	Weight
	(number)	landed (kg)	1SW number	1SW (kg)	2SW (number)	2SW (kg)	%	%
Reykjanes	2383	5613	2310	5276	73	337	5,0	4,4
Vesturland	14162	34707	13326	30695	836	4012	29,8	27,1
Vestfirðir	1249	3581	1012	2391	237	1190	2,6	2,8
Norðurland vestra	4259	13661	3141	7775	1118	5886	8,9	10,7
Norðurland eystra	2427	8434	1537	3776	890	4658	5,1	6,6
Austurland	2253	7018	1689	4264	564	2754	4,7	5,5
Suðurland	20863	55005	17852	40053	3011	14632	43,8	43,0
Total	47596	128019	40867	94230	6729	33469	100	100

Table 4. Catch of brown trout and Arctic charr in rod and line fishery in Icelandic river and lakes in 2011.

Region	Catch with rod and line Brown trout (sea-run and stationary)				Catch with rod and line Arctic charr (sea-run and stationary)			
	Catch (number)	Catch and released	Catch landed (number)	Catch landed (kg)	Catch (number)	Catch and released	Catch landed (number)	Catch landed (kg)
Reykjanes	536	194	342	470	255	76	179	123
Vesturland	1850	263	1561	1813	694	37	657	590
Vestfirðir	51	0	51	46	317	14	303	235
Norðurland vestra	8497	1107	7390	6390	6923	560	6363	6311
Norðurland eystra	9943	5112	4831	5954	5383	1461	3922	4234
Austurland	595	34	561	540	1827	175	1652	1405
Suðurland	21667	1377	20290	26758	10037	221	9816	4078
Total	43139	8087	35026	41971	25436	2544	22892	16976

Table 5. The salmon catch in Iceland 1974-2011 in numbers of fish. Total rod catch, rod catch landed, catch and release, catch in rivers with rod catch based mainly on smolt releases, net catch, harvest in Ocean ranching and total catch of salmon as well as the percentage of released fish.

Year	Rod catch	Catch landed	Catch and release	Catch and release total (%)	Ranched rod catch	Catch and release Ranched rod	Catch landed Ranched rod	Rod catch wild salmon number	Rod catch landed Wild salmon	Catch and release Wild salmon	Catch and release Wild (%)	Net catch landed	Rod and net catch landed	Rod and net catch wild landed	Ocean ranched harvest	Total catch	Percentage Ranched in rod fishery
1974	34107	34107			29		29	34078	34078	0	0	18044	52151	52122	3765	55916	0,1
1975	45882	45882			57		57	45825	45825	0	0	20402	66284	66227	7720	74004	0,1
1976	39249	39249			95		95	39154	39154	0	0	17130	56379	56284	3247	59626	0,2
1977	41302	41302			46		46	41256	41256	0	0	20864	62166	62120	2405	64571	0,1
1978	52679	52679			82		82	52597	52597	0	0	25946	78625	78543	1953	80578	0,2
1979	43955	43955			98		98	43857	43857	0	0	18306	62261	62163	1967	64228	0,2
1980	30007	30007			65		65	29942	29942	0	0	18992	48999	48934	3138	52137	0,2
1981	27777	27777			80		80	27697	27697	0	0	14478	42255	42175	4626	46881	0,3
1982	24671	24671			65		65	24606	24606	0	0	11107	35778	35713	5340	41118	0,3
1983	29267	29267			22		22	29245	29245	0	0	17761	47028	47006	11194	58222	0,1
1984	23582	23582			10		10	23572	23572	0	0	10912	34494	34484	6595	41089	0,0
1985	31621	31621			17		17	31604	31604	0	0	14942	46563	46546	19750	66313	0,1
1986	46671	46671			78		78	46593	46593	0	0	20437	67108	67030	24100	91208	0,2
1987	33907	33907			32		32	33875	33875	0	0	13960	47867	47835	14140	62007	0,1
1988	47979	47979			53		53	47926	47926	0	0	18781	66760	66707	64017	130777	0,1
1989	30082	30082			80		80	30002	30002	0	0	11738	41820	41740	48617	90437	0,3
1990	29443	29443			1622		1622	27821	27821	0	0	12339	41782	40160	90726	132508	5,5
1991	31492	31492			453		453	31039	31039	0	0	10454	41946	41493	133203	175149	1,4
1992	42309	42309			521		521	41788	41788	0	0	12062	54371	53850	140763	195134	1,2
1993	39025	39025			1041		1041	37984	37984	0	0	10197	49222	48181	168427	217649	2,7
1994	28042	28042			1576		1576	26466	26466	0	0	11846	39888	38312	89225	129113	5,6
1995	34241	34241			1523		1523	32718	32718	0	0	13185	47426	45903	88527	135953	4,4
1996	29436	28767	669	2,3	1298	0	1298	28138	27469	669	2,4	8668	37435	36137	84365	121800	4,4
1997	28640	27082	1558	5,4	2960	5	2955	25680	24127	1553	6,0	5735	32817	29862	15248	48065	10,3
1998	40286	37460	2826	7,0	3848	16	3832	36438	33628	2810	7,7	5939	43399	39567	11223	54622	9,6
1999	31438	28383	3055	9,7	2536	2	2534	28902	25849	3053	10,6	6657	35040	32506	9648	44688	8,1
2000	27257	24339	2918	10,7	3744	24	3720	23513	20619	2894	12,3	4170	28509	24789	375	28884	13,7
2001	29943	26332	3611	12,1	5466	25	5441	24477	20891	3586	14,7	3043	29375	23934	0	29375	18,3
2002	33767	27782	5985	17,7	1791	31	1760	31976	26022	5954	18,6	4583	32365	30605	0	32365	5,3
2003	34111	28750	5361	15,7	3443	165	3278	30668	25472	5196	16,9	7582	36332	33054	0	36332	10,1
2004	45831	38469	7362	16,1	6285	165	6120	39546	32349	7197	18,2	6742	45211	39091	0	45211	13,7
2005	55168	45944	9224	16,7	7413	228	7185	47755	38759	8996	18,8	7560	53504	46319	0	53504	13,4
2006	45545	36810	8735	19,2	6977	92	6885	38568	29925	8643	22,4	5953	42763	35878	0	42763	15,3
2007	53703	44012	9691	18,0	15053	432	14621	38650	29391	9259	24,0	6826	50838	36217	0	50838	28,0
2008	84124	66946	17178	20,4	29268	2469	26799	54856	40147	14709	26,8	9403	76349	49550	0	76349	34,8
2009	74408	56894	17514	23,5	18884	925	17959	55524	38935	16589	29,9	9607	66501	48542	0	66501	25,4
2010	74961	53485	21476	28,6	17911	1231	16680	57050	36805	20245	35,5	15903	69388	52708	0	69388	23,9
2011	55706	38867	16839	30,2	13417	1372	12045	42289	26822	15467	36,6	8729	47596	35551	0	47596	24,1
Meðaltal:																	
1974-2010	39889	36257	6835	13,9	3239	327	3112	35676	33145	6508	16,4	12223	48378	45266	29286	77664	
1974-2011	40306	36779	8375	16	3893	449	3704	36413	33075	3337	7,9	12131	48910	45206	27745	76655	
2002-2011	55732	43796	11937	21	12044	711	11333	43688	32463	11226	24,8	8289	52085	40752	0	52085	

Table 6. Top 10 lists of salmon rivers in 2011 including catch landed and catch and released and for catch landed only.

No	River	Salmon Catch ¹	No	River	Catch landed
1	Ytri-Rangá	4618	1	Ytri-Rangá	4463
2	Eystri-Rangá	4398	2	Eystri-Rangá	4287
3	Miðfjarðará	2365	3	Blanda	1907
4	Norðurá	2131	4	Norðurá	1667
5	Selá í Vopnafirði	2053	5	Langá	1601
6	Blanda	2036	6	Þverá og Kjarrá	1436
7	Langá	1905	7	Hvítá í Borgarfirði &	1250
8	Þverá og Kjarrá	1818	8	Ellidáur	888
9	Haffjarðará	1527	9	Hítará	824
10	Breiðdalsá	1430	10	Breiðdalsá	731

¹ Includes catch landed and catch and release

Table 7. Top 10 list of river or lakes with brown trout in 2011 including both migratory and stationary fish stocks.

No	River or Lake	Brown trout catch ¹
1	Veiðivötn	14608
2	Laxá í Þing ofan Brúa	4549
3	Fremri Laxá á Ásum	3622
4	Vatnsdalsá	2700
5	Reykjadalsá	1509
6	Litlaá	1289
7	Grenlækur	970
8	Steinsmýrarvötn	921
9	Hróarsholtslækur V.F. Flóamanna	757
10	Hvítá í Borgarfirði	691

¹ Includes catch landed and catch and release

Table 8. Top 10 list of river or lakes with Arctic charr in 2011 including both migratory and stationary fish stocks.

No	River or Lake	Arctic charr catch ¹
1	Veiðivötn	10634
2	Hlíðarvatn	2626
3	Víðidalsá og Fitjá	1728
4	Fljótaá	1493
5	Vatnsdalsá	1345
6	Hörgá	1054
7	Brúará	1054
8	Svarfaðardalsá	825
9	Norðfjarðará	824
10	Eyjafjarðará	736

¹ Includes catch landed and catch and release

Table 9. Number and weight in the rod catch in Reykjanes 2011. Total catch, catch landed, mean weight, grilse/salmon ratio of Atlantic salmon, brown trout, and Arctic charr (MW = mean weight (kg)).

River	Salmon					Grilse (1SW)					Salmon (2SW)					Brown trout					Arctic charr							
	Catch	Released	Catch landed	Weight landed	MW	Catch	Landed	Released	% Released	MW	Catch	Landed	Released	% Released	MW	Catch	Landed	Released	% Released	Weight Landed	MW	Catch	Landed	Released	% Released	Weight Landed	MW	
Elliðaár	1147	259	888	2040	2,4	1131	879	252	22,3	2,3	16	9	7	43,8	4,3	237	166	71	30,0	133	0,8	1	1	0	0,0	1	0,7	
Elliðavatn *																												
Úlfarsá (Korpa)	191	37	154	352	2,3	189	152	37	19,6	2,2	2	2	0	0,0	4,7	33	32	1	3,0	61	1,9	0	0	0	0,0	0	0,0	
Leirvogsa	354	0	354	780	2,2	339	339	0	0,0	2,1	15	15	0	0,0	4,3	54	54	0	0,0	97	1,8	0	0	0	0,0	0	0,0	
Blikdalsá	14	0	14	21	2,1	14	14	0	0,0	2,1	0	0	0	0,0	0,0	0	0	0	0,0	0	0,0	0	0	0	0,0	0	0,0	
Kiðafellsá *																												
Laxá í Kjós	929	436	493	1255	2,4	820	469	351	42,8	2,3	109	24	85	78,0	4,8	185	64	121	65,4	141	2,2	0	0	0	0,0	0	0,0	
Bugða	172	160	12	32	2,4	152	12	140	92,1	2,3	20	0	20	100,0	6,7	1	0	1	100,0	0	1,0	0	0	0	0,0	0	0,0	
Meðalfellsva *																												
Brynjudalsá	338	5	333	824	2,5	317	312	5	1,6	2,3	21	21	0	0,0	4,8	15	15	0	0	2	1,5	1	1	0	0,0	2	1,5	
Botnsá	138	3	135	309	2,3	136	133	3	2,2	2,2	2	2	0	0,0	3,8	11	11	0	0	15	1,4	0	0	0	0,0	0	0,0	
Djúpavatn																						253	173	80	31,6	177	0,7	
Reykjanes Total:	3283	900	2383	5613	2,4	3098	2310	788	25,4		185	73	112	60,5		536	342	194	56,7	449	1,3	255	175	80	31,4	179	1	

* no records

Table 10 (continued). Number and weight in the rod catch in Vesturland 2011. Total catch, catch landed, mean weight, grilse/salmon ratio of Atlantic salmon, brown trout and Arctic charr (MW = mean weight (kg)).

Ríver	Salmon					Grilse (1SW)					Salmon (2SW)					Brown trout					Arctic charr						
	Catch	Released	Catch landed	Weight landed	MW	Catch	Landed	Released	% Released	MW	Catch	Landed	Released	% Released	MW	Catch	Landed	Released	% Released	Weight Landed	MW	Catch	Landed	Released	% Released	Weight Landed	MW
Staðará *																											
Gríshólsá og Bakká	30	19	11	29	2,9	26	8	18	30,8	2,7	4	3	1	75,0	4,6	60	32	2	53,3	28	1,5	8	6	2	25	6	1,0
Órlygsstaðaá-Kársst.*																											
Fróða	100	54	46	102	2,5	94	46	48	51,1	2,3	6	0	6	100,0	5,5	0	0	0	0,0	0	0,0	41	41	0	0	25	0,6
Valshamarsá	13	0	13	22	1,7	13	13	0	0,0	1,7	0	0	0	0,0	0,0	7	7	0	0,0	12	1,7	0	0	0	0	0	0,0
Setbergssá *																											
Stóra-Langadalsá	10	1	9	19	2,2	10	9	1	10,0	2,2	0	0	0	0,0	0,0	16	8	8	50,0	20	2,5	0	0	0	0,0	0	0,0
Laxá á Skógarströnd	42	1	41	98	2,4	40	39	1	2,5	2,3	2	2	0	0,0	4,6	0	0	0	0,0	0	0,0	0	0	0	0	0	0,0
Svínafossá	24	20	4	11	2,8	23	4	19	82,6	2,4	1	0	1	0,0	0,0	20	1	19	95,0	1	1,0	0	0	0	0	0	0,0
Dunká	99	0	99	267	2,7	84	84	0	0,0	2,2	15	15	0	0,0	5,2	0	0	0	0,0	0	0,0	0	0	0	0	0	0,0
Hörudalsá	14	0	14	35	2,5	14	14	0	0,0	2,5	0	0	0	0,0	0,0	0	0	0	0,0	0	0,0	15	14	1	6,7	14	1,0
Skrauma *																											
Miða og Tunguá	215	0	215	605	2,8	178	178	0	0,0	2,3	37	37	0	0,0	5,2	0	0	0	0,0	0	0,0	152	152	0	0	137	0,9
Haukadalsá neðri	669	26	643	1549	2,4	595	575	20	3,4	2,2	74	68	6	8,1	4,8	2	2	0	0,0	2	0,9	25	25	0	0	15	0,6
Haukadalsá efri	20	0	20	51	2,5	17	17	0	0,0	2,3	3	3	0	0,0	4,2	4	4	0	0,0	2	0,4	151	151	0	0,0	136	0,9
Laxá í Dölum	568	70	498	1260	2,7	495	455	40	8,1	2,3	73	43	30	41,1	5,1	5	5	0	0,0	7	1,4	2	2	0	0	2	1,2
Ljá *																											
Ljárskógurvötn *																											
Fáskrúð	248	17	231	583	2,5	225	210	15	6,7	2,3	23	21	2	8,7	4,7	0	0	0	0,0	0	0,0	1	1	0	0	1	0,5
Glerá	44	0	44	106	2,4	41	41	0	0,0	2,2	3	3	0	0,0	5,7	0	0	0	0,0	0	0,0	0	0	0	0	0	0,0
Laxá í Hvammsveit	50	0	50	138	2,7	43	43	0	0,0	2,3	7	7	0	0,0	5,3	0	0	0	0,0	0	0,0	0	0	0	0	0	0,0
Flekkudalsá	107	8	99	224	2,4	100	95	5	5,0	2,2	7	4	3	42,9	4,3	12	12	0	0,0	11	0,9	4	3	1	25	3	1,0
Krossá	204	6	198	433	2,2	194	189	5	2,6	2,0	10	9	1	10,0	5,0	17	17	0	0,0	32	1,9	2	2	0	0,0	1	0,7
Búðardalsá	400	21	379	1041	2,8	336	330	6	1,8	2,4	64	49	15	23,4	4,9	1	1	0	0,0	1	1,0	1	1	0	0	7	7,0
Staðarhólsá og Hvalsá	209	1	208	538	2,6	188	188	0	0,0	2,3	21	20	1	4,8	5,0	0	0	0	0,0	0	0,0	124	122	2	1,6	85	0,7
Vesturland Total:	17976	3967	14009	34293	2,4	16140	13226	2914	18,1		1836	783	1053	57,4		1850	1561	262,5	14,2	1813	1,2	694	657	37	5,3	590	0,9

* no records

& Hvítá í Borgarfirði, combined for: Brenna, Svarthöfði, Straumar, Skuggi, Ferjukot-Norðurkot.

River closed for all fishery

Table 11. Number and weight in the rod catch in Vestfirðir 2011. Total catch, catch landed, mean weight, grilse/salmon ratio of Atlantic salmon, brown trout, and Arctic charr (MW = mean weight (kg)).

River	Salmon					Grilse (1SW)					Salmon (2SW)					Brown trout					Arctic charr						
	Catch	Released	Catch landed	Weight landed	MW	Catch	Landed	Released	% Released	MW	Catch	Landed	Released	% Released	MW	Catch	Landed	Released	% Released	Weight Landed	MW	Catch	Landed	Released	% Released	Weight Landed	MW
Gufudalsá *																											
Porskafljarðará	41	14	27	71	3,0	32	24	8	25,0	2,6	9	3	6	66,7	4,7	1	1	0	0	1	1,0	32	29	3	9,4	29	1,0
Vatnsdalsá í Vatnsfirði																											
Fjarðarhornsá	89	0	89	223	2,5	77	77	0	0,0	2,2	12	12	0	0,0	4,6	0	0	0	0	0	0,0	22	22	0	0,0	11	0,5
Skálmardalsá	1	1	0	2	2,0	1	0	1	100,0	2,0	0	0	0	0,0	0,0	0	0	0	0	0	0,0	151	145	6	4,0	87	0,6
Mórudalsá *																											
Suðurfossá	60	10	50	114	2,4	55	46	9	16,4	2,2	5	4	1	20,0	4,4	1	1	0	0,0	4	3,5	0	0	0	0,0	0	0,0
Staðará í Súgandafirði	58	18	40	96	2,5	55	40	15	27,3	2,4	3	0	3	100,0	3,7	7	7	0	0,0	11	1,6	1	1	0	0,0	1	0,5
Fljótavík *																											
Heydalsá *																											
Fossá í Skutulsfirði	1	1	0	0	3,9	1	0	1	0,0	3,9	0	0	0	0,0	0,0												
Langadalsá	263	48	215	573	3,0	198	196	2	1,0	2,4	65	19	46	70,8	5,9	0	0	0	0,0	0	0,0	1	1	0	0,0	1	1,0
Ísafjarðará	53	1	52	162	3,2	38	38	0	0,0	2,4	15	14	1	6,7	5,2	0	0	0	0	0	0,0	0	0	0	0,0	0	0,0
Laugardalsá	184	7	177	507	2,9	145	145	0	0,0	2,5	39	32	7	17,9	4,6	39	39	0	0,0	27	0,7	3	3	0	0,0	0	0,0
Laugardalsvatn *																											
Hvannadalsá	100	7	93	273	3,1	76	75	1	1,3	2,4	24	18	6	25,0	5,6	0	0	0	0	0	0,0	0	0	0	0,0	0	0,0
Selá í Ísafjarðardjúpi																											
Þjamarfjarðará*																											
Hvalsá	11	1	10	28	2,7	10	9	1	10,0	2,5	1	1	0	0,0	5,0	1	1	0	0	1	0,5	0	0	0	0,0	0	0,0
Selá í Steingrímsf.	38	1	37	131	3,7	22	22	0	0,0	2,6	16	15	1	6,3	5,1	1	1	0	0	1	1,1	96	91	5	5,2	100	1,1
Staðará í Steing. *																											
Miðdalsá *																											
Víðdalsá, Þverá, Húsa	141	3	138	433	3,2	99	96	3	3,0	2,4	42	42	0	0,0	5,0	0	0	0	0	0	0,0	4	4	0	0,0	2	0,6
Hrófá	36	0	36	120	3,3	24	24	0	0,0	2,6	12	12	0	0,0	4,8	0	0	0	0	0	0,0	0	0	0	0,0	0	0,0
Prestbakkaá	84	0	84	210	2,5	76	76	0	0,0	2,3	8	8	0	0,0	4,3	0	0	0	0	0	0,0	0	0	0	0,0	0	0,0
Krossá	76	1	75	253	3,4	47	47	0	0,0	2,3	29	28	1	3,4	5,2	1	1	0	0	1	1,0	1	1	0	0,0	1	1,0
Víkurá	119	0	119	367	3,1	91	91	0	0,0	2,5	28	28	0	0,0	4,9	0	0	0	0	0	0,0	6	6	0	0,0	3	0,5
Laxá í Hrútafirði	7	0	7	18	2,6	6	6	0	0,0	2,3	1	1	0	0,0	4,2	0	0	0	0	0	0,0	0	0	0	0,0	0	0,0
Vestfirðir Total:	1362	113	1249	3581	2,9	1053	1012	41	3,9		309	237	72	23,3		51	51	0	0,0	46	0,9	317	303	14	4,4	235	0,78

* no records

Table 12. Number and weight in the rod catch in Norðurlandi vestra 2011. Total catch, catch landed, mean weight, grilse/salmon ratio of Atlantic salmon, brown trout, and Arctic charr (MW = mean weight (kg)).

River	Salmon					Grilse (1SW)					Salmon (2SW)					Brown trout					Arctic charr						
	Catch	Released	Catch landed	Weight landed	MW	Catch	Landed	Released	%	MW	Catch	Landed	Released	%	MW	Catch	Landed	Released	%	Weight Landed	MW	Catch	Landed	Released	%	Weight Landed	MW
Hrútafjarðará og Síká	318	71	247	767	3,5	225	199	26	11,6	2,5	93	48	45	48,4	6,0	0	0	0	0,0	0	0	120	119	1	0,8	154,7	1,3
Tjarnará	53	0	53	142	2,7	41	41	0	0,0	2,1	12	12	0	0,0	4,5	0	0	0	0,0	0	0,0	44	44	0	0,0	35	0,8
Hamarsá	8	0	8	21	2,6	7	7	0	0,0	2,3	1	1	0	0,0	4,5	0	0	0	0,0	0	0,0	19	19	0	0,0	11	0,6
Miðfjarðará	2365	2051	314	886	3,7	1608	303	1305	81,2	2,8	757	11	746	98,5	5,6	15	14	1	6,7	27	1,9	72	71	1	1,4	92	1,3
Amarv.-Stóra og Austurá															233	218	15	6,4	262	1,2	270	260	10	3,7	260	1,0	
Viðdalsá og Fitjá	719	380	339	936	4,0	433	314	119	27,5	2,6	286	25	261	91,3	6,3	175	162	13	7,4	243	1,5	1042	1016	26	2,5	1422	1,4
Vatnsdalsá	812	689	123	383	4,3	431	69	362	84,0	2,8	381	54	327	85,8	5,9	2700	2635	65	2,4	2899	1,1	1342	1319	23	1,7	1451	1,1
Citjá %																											
Gjúfurá	93	30	63	176	3,2	70	52	18	25,7	2,5	23	11	12	52,2	5,2	14	10	4	28,6	17	1,7	151	114	37	24,5	148	1,3
Laxá á Ásum	438	123	315	830	2,8	389	295	94	24,2	2,5	49	20	29	59,2	5,6	0	0	0	0,0	0	0,0	0	0	0	0,0	0	0,0
Fremri Laxá á Ásum	11	0	11	20	2,1	9	9	0	0,0	2,1	2	2	0	0,0	5,0	3622	3213	409	11,3	1607	0,5	13	13	0	0,0	14	1,1
Blanda	2036	129	1907	6827	3,6	1232	1178	54	4,4	2,5	804	729	75	9,3	5,2	52	52	0	0,0	73	1,4	62	60	2	3,2	72	1,2
Svartá	300	74	226	617	2,7	228	199	29	12,7	2,4	72	27	45	62,5	5,7	49	46	3	6,1	60	1,3	54	51	3	5,6	61	1,2
Langavatn á Refas.*																											
Seyðisá *																											
Blöndulón *																											
Laxá á Refasveit	274	7	267	861	3,3	190	189	1	0,5	2,5	84	78	6	7,1	5,2	6	5	1	16,7	3	0,6	0	0	0	0,0	0	0,0
Hallá	47	1	46	131	2,8	38	37	1	2,6	2,3	9	9	0	0,0	5,1	5	4	1	20,0	9	2,3	1	1	0	0,0	2	1,5
Laxá í Nesjum	53	28	25	77	4,6	19	16	3	15,8	2,3	34	9	25	73,5	5,8	0	0	0	0,0	0	0,0	0	0	0	0,0	0	0,0
Fossá á Skaga	23	0	23	109	4,7	7	7	0	0,0	2,6	16	16	0	0,0	5,6	0	0	0	0,0	0	0,0	2	2	0	0,0	1	0,5
Laxá á Skaga #																											
Svartá o.Reykjafoss																135	0	135	100,0	0	1,0	0	0	0	0,0	0	0,0
Húseyjarkvísl	175	160	15	66	4,5	82	7	75	91,5	2,7	93	8	85	91,4	5,6	635	199	436	68,7	418	2,1	3	1	2	66,7	1	1,0
Sæmundará	150	14	136	333	2,5	143	131	12	8,4	2,4	7	5	2	28,6	4,9	123	123	0	0,0	135	1,1	55	55	0	0,0	50	0,9
Norðurá í Skagafirði *																											
Héraðsvötn *																											
Hofsá Vesturdal																1	1	0	0,0	1	1,0	56	54	2	3,6	59	1,1
Hjaltadalsá og Kolka	40	1	39	149	3,8	20	20	0	0,0	2,6	20	19	1	0,0	5,0	29	29	0	0,0	41	1,4	158	157	1	0,6	126	0,8
Hofsá, Unadalsá	0	0	0	0	0,0	0	0	0	0,0	0,0	0	0	0	0,0	0,0	1	1	0	0,0	1	1,0	56	54	2	3,6	59	1,1
Grafará *																											
Hrollleifsdalsá	14	0	14	44	3,2	8	8	0	0,0	2,0	6	6	0	0,0	4,7	158	139	19	12,0	111	0,8	203	200	3	1,5	180	0,9
Flókadalsá efri																						764	668	96	12,6	534	0,8
Flókadalsá neðri	23	0	23	73	3,2	16	16	0	0,0	2,6	7	7	0	0,0	4,5	538	536	2	0,4	482	0,9	459	459	0	0,0	275	0,6
Fljótaá	192	138	54	182	3,5	131	36	95	72,5	2,6	61	18	43	70,5	5,6	6	3	3	0,0	3	1,0	1978	1626	352	17,8	1301	0,8
Norðurland vestra Total:	8144	3896	4248	13630	3,2	5327	3133	2194	41,2		2817	1115	1702	60,4		8497	7390	1107	13,0	6390	0,86	6924	6363	561	8,1	6311	0,99

* no records

% Recorded with River Vatnsdalsá

Table 13. Number and weight in the rod catch in Norðurlandi eystra 2011. Total catch, catch landed, mean weight, grilse/salmon ratio of Atlantic salmon, brown trout, and Arctic charr (MW = mean weight (kg)).

River	Salmon					Grilse (1SW)					Salmon (2SW)					Brown trout					Arctic charr						
	Catch	Released	Catch landed	Weight landed	MW	Catch	Landed	Released	% Released	MW	Catch	Landed	Released	% Released	MW	Catch	Landed	Released	% Released	Weight Landed	MW	Catch	Landed	Released	% Released	Weight Landed	MW
Ólafsfjarðará	0	0	0	0	0,0	0	0	0	0,0	0,0	0	0	0	0,0	0,0	6	6	0	0,0	4	0,7	421	385	36	8,6	308	0,8
Svarfaðardalsá	0	0	0	0	0,0	0	0	0	0,0	0,0	0	0	0	0,0	0,0	186	173	13	7,0	138	0,8	343	323	20	5,8	291	0,9
Héðinsfjarðará																						604	555	49	8,1	777	1,4
Héðinsfjarðarvatn																						394	391	3	0,8	313	0,8
Þorvaldsdalsá *																											
Hörgá	2	0	2	7	3,5	1	1	0	0,0	2,0	1	1	0	0,0	4,5	269	240	29	10,8	192	0,8	739	696	43	0,0	626	0,9
Eyjafjarðará	9	0	9	29	3,3	5	5	0	0,0	2,5	4	4	0	0,0	4,2	396	363	33	8,3	508	1,4	593	290	303	51,1	493	1,7
Fnjóská	687	99	588	2321	4,0	323	282	41	12,7	2,5	364	306	58	15,9	5,3	90	87	3	3,3	122	1,4	485	397	88	18,1	437	1,1
Bakkaá í Fnjóskadal																11	11	0	0,0	17	1,5	43	43	0	0,0	56	1,3
Fnjóská Bleikjasmýrdal																27	23	4	14,8	28	1,2	196	94	102	52,0	113	1,2
Fjarðará í Hvalvatnsf.	1	0	1	2	2,2	1	1	0		2,2	0	0	0	0,0	0,0	0	0	0	0,0	0	0,0	55	55	0	0,0	61	1,1
Djúpá	54	7	47	134	2,9	45	41	4	8,9	2,5	9	6	3	33,3	5,1	3	3	0	0,0	4	1,3	0	0	0	0,0	0	0,0
Skjálfandafjót A-deild	589	3	586	1807	3,1	404	402	2	0,5	2,2	185	184	1	0,5	4,9	56	54	2	3,6	49	0,9	234	234	0	0,0	164	0,7
Skjálfandafjót B-deild	138	22	116	400	3,8	83	82	1	1,2	2,7	55	34	21	38,2	5,5	0	0	0	0,0	0	0,0	0	0	0	0,0	0	0,0
Laxá í Aðaldal	1089	896	193	918	5,4	323	91	232	71,8	2,8	766	102	664	86,7	6,5	571	408	163	28,5	449	1,1	17	12	5	0,0	12	1,0
Laxá í Þing o. Brúa																4549	2128	2421	53,2	3192	1,5	5	4	1	20,0	3	0,7
Amarvatnsá og Helluvaðsá																506	38	468	92,5	65	1,7	0	0	0	0,0	0	0,0
Kráká																28	1	27	96,4	1	1,0	28	1	27	96,4	1	1,0
Gautlandalækur																10	3	7	70,0	2	0,5	3	3	0	0,0	2	0,5
Reykjadalsá	79	64	15	47	3,7	60	12	48	80,0	2,6	19	3	16	0,0	5,7	1509	988	521	34,5	790	0,8	5	5	0	0,0	6	1,1
Mýrarkvísl	112	45	67	205	3,5	80	58	22	27,5	2,7	32	9	23	71,9	5,6	0	0	0	0,0	0	0,0	0	0	0	0,0	0	0,0
Litlaá	11	6	5	13	2,5	11	5	6	0,0	2,5	0	0	0	0,0	0,0	1289	56	1233	95,7	67	1,2	268	20	248	0,0	16	0,8
Skjálftavatn			0													43	1	42	97,7	1	1,0	222	3	219	98,6	4	1,2
Brunná	1	0	1	3	3,0	1	1	0	0,0	3,0	0	0	0	0,0	0,0	56	13	43	76,8	26	2,0	429	156	273	63,6	203	1,3
Deildará	215	13	202	605	3,1	143	142	1	0,7	2,4	72	60	12	16,7	4,5	94	94	0	0,0	85	0,9	32	32	0	0,0	38	1,2
Ormarsá	552	406	146	497	4,0	272	107	165	60,7	2,6	280	39	241	86,1	5,4	171	86	85	49,7	129	1,5	239	201	38	15,9	281	1,4
Svalbarðsá	562	531	31	101	4,1	229	19	210	91,7	2,8	333	12	321	96,4	5,0	20	8	12	60,0	13	1,6	10	7	3	30,0	9	1,3
Sandá	476	351	125	418	4,1	216	83	133	61,6	2,5	260	42	218	83,8	5,4	2	2	0	0,0	2	1,0	2	0	2	100,0	0	1,0
Hafralónsá	403	295	108	319	4,1	172	84	88	51,2	2,7	231	24	207	89,6	5,2	45	39	6	13,3	66	1,7	15	14	1	6,7	21	1,5
Kverká	36	30	6	18	4,0	16	5	11	68,8	2,4	20	1	19	95,0	5,3	2	2	0	0,0	1	1,0	0	0	0	0,0	0	0,0
Hölkna	181	54	127	413	3,7	86	76	10	11,6	2,5	95	51	44	46,3	4,8	4	4	0	0,0	4	1,1	1	1	0	0,0	1	1,0
Bakkaá (v.f. Sandvíkur) *																											
Lónsá og Sauðanesá *																											
Norðurland eystra Total:	5197	2822	2375	8257	3,5	2471	1497	974	39,4		2726	878	1848	67,8		9943	4831	5112	51,4	5954	1,2	5383	3922	1461	27,1	4234	1,1

* no records

Table 14. Number and weight in the rod catch in Austurland 2011. Total catch, catch landed, mean weight, grilse/salmon ratio of Atlantic salmon, brown trout, and Arctic charr (MW = mean weight (kg)).

River	Salmon					Grilse (1SW)					Salmon (2SW)					Brown trout					Arctic charr						
	Catch	Released	Catch landed	Weight landed	MW	Catch	Landed	Released	% Released	MW	Catch	Landed	Released	% Released	MW	Catch	Land	Released	% Released	Weight Landed	MW	Catch	Landed	Released	% Released	Weight Landed	MW
Miðfjarðá og Kverká	392	271	121	379	3,9	202	107	95	47	2,9	190	14	176	93	5,0	0	0	0	0	0	0,0	3	3	0	0	6	2,0
Æsasagilsá og Bakkaá*																											
Hölná í Bakkaf	74	73	1	3	3,3	52	1	51	98,1	2,6	22	0	22	100	4,9	3	0	3	0	0	1,0	3	1	0	0,0	0	1,0
Selá í Vopnafirði	2053	1638	415	1302	3,8	1056	334	722	68,4	2,6	997	81	916	92	5,1	12	12	0	0,0	12	1,0	13	11	2	15,4	20	1,8
Vesturdalsá	316	222	94	272	3,6	166	76	90	54,2	2,5	150	18	132	88	4,9	0	0	0	0,0	0	0,0	173	173	0	0,0	121	0,7
Hofsá	803	573	230	768	4,0	394	155	239	60,7	2,6	409	75	334	82	5,4	100	100	0	0,0	100	1,0	129	129	0	0,0	129	1,0
Sunnudalsá	149	121	28	60	3,0	98	23	75	76,5	2,2	51	5	46	90	4,5	3	1	2	66,7	1	1,0	1	1	0	0,0	2	1,5
Fögruhliðará	58	24	34	104	3,2	43	27	16	37,2	2,6	15	7	8	53	4,9	25	18	7	28,0	16	0,9	96	62	34	35,4	56	0,9
Vatnasv. Jökulsár á Dal	507	225	282	957	3,7	236	159	77	32,6	2,4	271	123	148	55	4,7	26	21	5	19,2	34	1,6	106	88	18	17,0	106	1,2
Gilsá og Selfjót	122	5	117	349	3,0	90	86	4	4,4	2,4	32	31	1	3	4,5	178	171	7	3,9	154	0,9	130	116	14	10,8	104	0,9
Eyvindará *																											
Kelduá *																											
Fjarðará, Borgarf.-Eystra *																											
Fjarðará, Seyðisfirði	13	0	13	41	3,2	8	8	0	0,0	2,0	5	5	0	0	5,0	0	0	0	0,0	0	0,0	105	103	2	1,9	52	0,5
Norðfjarðará	32	1	31	117	3,8	15	15	0	0,0	2,6	17	16	1	6	4,9	0	0	0	0,0	0	0,0	749	732	17	2,3	586	0,8
Fjarðará, Loðmundarf.	35	6	29	103	3,0	30	27	3	10,0	2,5	5	2	3	60	5,9	11	9	2	0,0	9	1,0	80	68	12	15,0	75	1,1
Sléttuá í Reyðarfirði #																											
Dalsá í Fäskrúðsfirði	24	4	20	58	2,9	16	14	2	12,5	2,5	8	6	2	0	3,8	2	2	0	0,0	1	0,6	145	104	41	28,3	83	0,8
Breiðdalsá	1430	699	731	2165	3,5	866	590	276	31,9	2,6	564	141	423	75	4,9	205	197	8	3,9	177	0,9	94	61	33	35,1	67	1,1
Selá í Álftafirði	98	5	93	292	3,2	64	62	2	3,1	2,5	34	31	3	9	4,5	30	30	0	0,0	36	1,2	0	0	0	0,0	0	0,0
Ceithellnaá *																											
Hofitellsá *																											
Laxá í Nesjum *																											
Austurland Total:	6106	3867	2239	6970	3,1	3336	1684	1652	49,5		2770	555	2215	80		595	561	34	5,7	540	1,0	1827	1652	175	9,6	1405	0,9

* no records

closed for fishery

Table 15. Number and weight in the rod catch in Sudurland 2011. Total catch, catch landed, mean weight, grilse/salmon ratio of Atlantic salmon, brown trout, and Arctic charr (MW = mean weight (kg)).

River	Salmon					Grilse (1SW)					Salmon (2SW)					Brown trout					Arctic charr						
	Catch	Released	Catch landed	Weight landed	MW	Catch	Landed	Released	% Released	MW	Catch	Landed	Released	% Released	MW	Catch	Landed	Released	% Released	Weight Landed	MW	Catch	Landed	Released	% Released	Weight Landed	MW
Brunná *																											
Laxá, Brúará, Djúpa Eldvatn á Brunas. *	1	0	1	5	5,0	0	0	0	0,0	0,0	1	1	0	0	5,0	48	48	0	0,0	96	2,0	3	3	0	0	4	1,2
Fossálar	2	0	2	8	3,8	1	1	0	0,0	2,6	1	1	0	0	5,0	58	58	0	0,0	133	2,3	8	8	0	0,0	7	0,9
Vatnamót	14	1	13	26	2,0	14	13	1	7,1	2,0	0	0	0	0,0	412	301	111	26,9	632	2,1	9	8	1	11,1	7	0,9	
Hólmasvæði *																											
Geirlandsá	31	1	30	81	2,7	27	26	1	3,7	2,3	4	4	0	0	5,2	235	182	53	22,6	491	2,7	9	9	0	0,0	9	1,0
Skaftá *																											
Hörgsá á Síðu *																											
Fjaðrá *																											
Víkurflóð			0					0	0,0				0	0		2	2	0	0,0	1	0,6	0	0	0	0,0	0	0,0
Hæðgarðsvatn *																											
Holtsá *																											
Tungulækur *																											
Grænækur	0	0	0	0	0,0	0	0	0	0,0	0,0	0	0	0	0,0	970	722	248	25,6	1300	1,8	17	14	3	17,6	20	1,4	
Steinsmýrarvötn			0					0	0,0				0	0		921	618	303	0,0	742	1,2	23	18	5	21,7	27	1,5
Eyjalón *																											
Eldvatn í Meðallandi	31	6	25	70	2,7	28	22	6	21,4	2,3	3	3	0	0	4,8	197	73	124	62,9	175	2,4	40	37	3	7,5	48	1,3
Tungufljót	20	1	19	48	2,5	18	17	1	5,6	2,4	2	2	0	0	3,7	240	183	57	23,8	531	2,9	34	29	5	14,7	26,1	0,9
Kúðafliót *																											
Skálm *																											
Vatnsá og Kerlingadalsá	204	89	115	391	3,4	155	101	54	34,8	2,4	49	14	35	71,4	5,2	101	69	32	31,7	97	1,4	3	2	1	0,0	2	1,0
Heiðarvatn *																											
Skógaá	27	0	27	70	2,6	26	26	0	0,0	2,6	1	1	0	0,0	3,5	0	0	0	0,0	0	0,0	1	1	0	0,0	1	1,0
Markarfljót, Álur	3	0	3	7	2,2	3	3	0	0,0	2,2	0	0	0	0,0	0,0	11	10	1	9,1	27	2,7	1	1	0	0,0	2	2,0
Afall, A-Landeyjum	477	1	476	1219	2,6	397	397	0	0,0	2,1	80	79	1	1,3	4,9	64	61	3	4,7	73	1,2	1	1	0	0,0	0	0,4
Ytri-Rangá	4618	155	4463	10326	2,3	4426	4286	140	3,2	2,2	192	177	15	7,8	4,9	104	93	11	10,6	149	1,6	34	32	2	5,9	45	1,4
Hólsá - vesturbakki	291	3	288	672	2,3	282	279	3	1,1	2,3	9	9	0	0,0	4,8	0	0	0	0,0	0	0,0	0	0	0	0,0	0	0,0
Y-Rangá Heiði Bjallalækur	53	0	53	132	2,5	44	44	0	0,0	2,3	9	9	0	0,0	4,3	72	71	1	1,4	121	1,7	2	2	0	0,0	2	1,2
Hólsá - austurbakki	435	1	434	1190	2,7	366	366	0	0,0	2,3	69	68	1	1,4	5,0	169	163	6	3,6	277	1,7	4	4	0	0,0	0	1,6
Eystri-Rangá	4398	111	4287	11016	2,6	3922	3831	91	2,3	2,3	476	456	20	4,2	5,1	68	53	15	22,1	95	1,8	23	19	4	0,0	30	1,6
Þverá	119	1	118	267	2,3	114	113	1	0,9	2,1	5	5	0	0,0	5,4	56	54	2	3,6	49	0,9	1	1	0	0,0	2	1,6
Hróarslækur	38	0	38	126	3,3	25	25	0	0,0	2,1	13	13	0	0	5,7	14	14	0	0,0	21	1,5	5	5	0	0,0	8	1,6
Minnivallarlækur	1	1	0	0	3,0	1	0	1	100,0	3,0	0	0	0	0	0,0	228	62	166	72,8	99	1,6	0	0	0	0,0	0	0,0
Galtlækur																156	135	21	13,5	108	0,8	1	0	1	0,0	0	1,0

Table 15. (continued). Number and weight in the rod catch in Sudurland 2011. Total catch, catch landed, mean weight, grilse/salmon ratio of Atlantic salmon, brown trout, and Arctic charr (MW = mean weight (kg)).

River	Salmon					Grilse (1SW)					Salmon (2SW)					Brown trout					Arctic charr						
	Catch	Released	Catch landed	Weight landed	MW	Catch	Landed	Released	% Released	MW	Catch	Landed	Released	% Released	MW	Catch	Landed	Released	% Released	Weight Landed	MW	Catch	Landed	Released	% Released	Weight Landed	MW
Kálfá	48	15	33	68	2,4	43	33	10	23,3	2,1	5	0	5	100,0	5,1	11	10	1	9,1	14	1,4	0	0	0	0,0	0	0,0
Fossá í Þjórsárdal	60	13	47	161	3,6	34	27	7	20,6	2,1	26	20	6	0	5,4	9	7	2	0,0	13	1,8	1	1	0	0,0	2	2,0
Þverá í Þjórsárdal	4	0	4	7	1,7	4	4	0	0,0	1,7	0	0	0	0	0,0	7	7	0	0,0	6	0,9	1	1	0	0,0	1	0,5
Þjórsá Miðhús	23	0	23	67	2,9	17	17	0	0,0	2,2	6	6	0	0	5,0	13	13	0	0,0	14	1,1	6	6	0	0,0	5	0,8
Kaldakvísl																4	0	4	100,0	0	1,0	42	1	41	97,6	1	0,8
Kvísilaveitur																124	104	20	16,1	94	0,9						
Botnsvatn *																											
Fellsendavatn																88	87	1	1,1	113	1,3						
Þórisvatn																140	140	0	0,0	84	0,6						
Veidivötn																14608	14608	0	0,0	18114	1,2	7461	7461	0	0,0	2313	0,3
Laugarvatn *																											
Hólaá																12	12	0	0,0	13	1,1	22	19	3	13,6	13	0,7
Apá																197	181	16	8,1	145	0,8	6	6	0	0,0	2	0,4
Apavatn																296	296	0	0,0	237	0,8	6	2	4	66,7	5	2,4
Óifusá	360	2	358	988	2,8	315	314	1	0,3	2,4	45	44	1	2,2	4,9	613	612	1	0,2	796	1,3	6	6	0	0,0	6	1,0
Hvítá	448	0	448	1203	2,7	396	396	0	0,0	2,4	52	52	0	0,0	4,8	151	146	5	3,3	197	1,3	18	18	0	0,0	20	1,1
Brúará	30	0	30	83	2,8	24	24	0	0,0	2,3	6	6	0	0,0	4,4	202	202	0	0,0	202	1,0	437	435	2	0,5	435	1,0
Litla-Laxá *																											
Stóra-Laxá	766	618	148	404	3,4	562	131	431	76,7	2,6	204	17	187	91,7	5,5	14	9	5	35,7	12	1,3	39	38	1	2,6	53	1,4
Tungufljót Biskupstungur	124	2	122	432	3,5	75	73	2	2,7	2,6	49	49	0	0,0	4,9	2	1	1	0,0	1	1,0	24	24	0	0,0	55	2,3
Sog	955	246	709	2175	3,2	726	567	159	21,9	2,6	229	142	87	38,0	5,3	146	98	48	32,9	157	1,6	150	111	4	2,7	155	1,4
Ásgarðslækur *																											
Varna/Þorleifs lækur	10	7	3	13	4,1	4	0	4	100,0	3,2	6	3	3	50,0	4,3	144	114	30	20,8	57	0,5	24	24	0	0,0	24	1,0
Hróarsholtslækur	46	0	46	148	3,2	32	32	0	0,0	2,6	14	14	0	0,0	4,8	757	670	87	11,5	1273	1,9	8	8	0	0,0	17	2,1
Úlfjótavatn *																											
Pingvallavatn *																											
Hlíðarvatn	1	0	1	3	3,0	1	1	0	0,0	1,0	0	0	0	0	0,0	3	1	2	66,7	1	0,9	1567	1461	106	6,8	731	0,5
Sudurland Total:	13638	1274	12364	31406	2,5	12082	11169	913	7,6		1556	1195	361	23,2		21667	20290	1377	6,4	26758	1,3	10037	9816	221	2,2	4078	0,4

* no records

Table 16. continued.

River	Y E A R																												Average	Max	Min														
	1974	1975	1976	1977	1978	1979	1980	1981	1982	1983	1984	1985	1986	1987	1988	1989	1990	1991	1992	1993	1994	1995	1996	1997	1998	1999	2000	2001	2002	2003	2004	2005	2006	2007	2008	2009	2010	2011	catch	catch	catch				
Hrutafjarðará og Siká	194	291	228	262	346	312	253	288	220	287	195	345	536	259	532	252	200	359	459	411	176	288	205	201	243	218	141	126	168	164	631	514	339	431	402	643	499	318	314	643	126				
Mörfjarðará	837	1414	1601	2581	2337	2132	1714	1213	926	882	583	1059	1719	1073	2081	1175	774	1112	1401	1023	668	1032	714	602	1772	1203	612	433	753	577	2228	1561	1198	1132	1736	3962	4048	2365	1427	4048	433				
Tjarnará á Vatnsnesi			34	112	82	53	56	36	53	23	55	25	0	40	18	51	23	40	9	30	0	37	61	32	10	6	39	36	53	52	50	37	71	93	62	53	42	112	0						
Víðidalá og Fltjá	1051	1140	1238	1792	1851	1948	1423	1392	1132	1082	625	713	1541	1563	2023	924	604	667	1473	1342	580	981	783	691	1081	1089	644	581	887	588	1745	1732	682	728	1440	1999	1256	719	1151	2023	580				
Vatnsdalá	706	832	571	1203	1466	1413	1033	985	721	879	699	856	1582	1496	1243	660	604	683	998	853	516	601	723	769	1149	629	323	584	850	547	964	1256	1020	853	1233	1520	1311	812	925	1582	323				
Laxá á Ásum	1439	1881	1270	1439	1854	1650	956	1413	1036	1050	625	1440	1857	1157	1617	749	651	833	861	1458	805	1549	627	715	1136	430	770	562	559	308	462	679	365	536	503	1123	737	438	988	1881	308				
Blanda	1173	2363	1485	1367	2147	906	778	1412	861	511	495	766	1814	1243	1217	375	607	568	432	404	357	519	600	877	1984	1191	706	1086	833	504	1386	1591	1199	1107	927	2445	2654	2036	1130	2654	357				
Svartá	420	232	96	46	295	469	444	125	73	147	132	330	391	462	275	118	105	108	363	495	400	547	244	532	619	213	170	283	260	276	398	221	303	301	272	420	572	300	302	619	46				
Laxá á Refasveit	79	58	41	71	94	146	153	71	39	57	70	111	144	132	140	96	156	117	297	227	144	143	104	139	179	105	69	88	169	82	154	254	242	208	224	340	319	274	146	340	39				
Hallá			171	185	197	138	96	57	111	86	109	55	62	62	50	30	45	55	43	28	48	57	38	31	8	22	0	53	91	65	100				179	103	47	75	197	0					
Fossá á Skaga	5	6	34	62	98	94	26	14	25	8	22	32	20	22	24	12	22	20	25	10	16	14	17	17	13	15	16	32	12	29	21	28	30	23	30	29	23	26	98	5					
Laxá á Skaga	120	134	73	140	200	220	245	161	113	93	74	134	138	176	137	70	103	70	144	106	26	30	38	41	79	10	0	0	0	0	0	0	0	0	0	0	0	0	0	76	245	0			
Sæmundará	115	116	160	212	303	112	70	52	29	75		139	94																																
Húseyjarkvísl	112	118	141	158	194	84	107	52	54	90	77	105	104	101	73	113	89	103	245	160	80	73	71	70	94	39	32	47	52	63	162	110	150	161	199	281	249	175	115	281	32				
Hofsá í Vesturdal	23	2		15		12	16	10	23																																				
Kolka						12	12	11	7			24																																	
Hrolleifsdalá	20	24	28	41	41	65	17	4	7	4	7	4	25	15	24	10	18	16	18	16	55	7																							
Flökadalá í Fljótum					71	40	22	54	2	10		22	68	38	64	119	135	44	164	136	15	2	21	15	40	30	12	22	37	24	36	23	18	11	12	1	30	23	41	164	1				
Fljótaá	204	189	173	269	316	199	165	125	71	60	68	83	150	112	93	323	388	135	282	203	78	102	73	119	284	51	49	256	259	86	90	84	465	284	192	168	465	49							
Eyjafjarðará					27	71	21	14	7	11	11	13	13	10	6	40	22	54	33	15	17	10	15	27	8	3	12	16	10	5	2	0	4	10	9	16	71	0							
Fnjósá	386	268	250	273	554	446	527	257	323	98	107	120	144	93	124	112	121	135	454	411	128	60	95	156	286	157	197	146	311	166	444	460	383	346	501	417	1054	687	297	1054	60				
Skjálfafljóti	92	67	412	288	336	317	426	108	169	100	165	679	721	503	379	431	493	318	862	907	379	273	353	277	263	520	379	208	472	346	932	556	675	747	681	696	535	727	442	932	67				
Laxá í Aðaldal	1817	2326	1777	2699	3063	2372	2324	1455	1304	1109	1256	1911	2730	2422	2255	1619	1543	1439	2295	1983	1226	1116	1047	1227	1928	895	916	1042	1189	624	947	1025	825	1055	1168	1078	1493	1089	1568	3063	624				
Reykjadalá og Eyvin	337	264	133	593	657	492	321	271	114	210	155	344	373	241	435	241	272	191	280	249	110	119	132	109	65	64	39	87	25	90	89	138	102	43	32	76	104	79	202	657	25				
Mýrarkvísl	210	201	121	181	221	197	169	242	179	248	215	388	490	252	287	239	188	243	390	266	139	234	160	270	212	122	49	83	258	103	357	385	306	49	101	69	82	112	211	490	49				
Ormarsá	123	117	147	275	286	119	124	54	45	87	73	203	350	275	278	264	187	156	335	366	169	163	181	141	134	108	163	143	199	233	295	216	187	182	251	282	319	552	205	552	45				
Deildará	158	189	168	224	357	164	111	93	27	55	69	234	253	178	173	145	142	88	281	391	173	206	82	141	192	65	144	122	194	93	273	177	135	257	214	252	176	215	174	391	27				
Svalbarðsá	234	172	155	240	257	158	167	51	36	41	29	161	171	176	198	238	135	136	289	384	145	215	177	98	159	124	92	143	236	291	231	292	283	302	320	434	504	562	211	562	29				
Sandá	288	238	315	474	418	411	380	138	53	47	35	257	340	403	290	182	81	100	354	434	204	209	152	91	177	190	143	128	212	151	197	260	268	268	338	411	334	476	249	476	35				
Hölná	135	118	92	219	330	86	73	26	26	25	11	109	121	131	144	105	91	55	150	130	45	78	44	36	53	47	59	77	84	105	84	140	135	101	130	171	185	181	98	219	11				
Halfralónsá og Kverka	343	302	227	312	276	264	180	36	60	52	25	132	223	296	361	313	223	123	266	402	147	234	222	221	260	254	315	303	294	237	206	365	424	481	585	501	610	403	276	610	25				
Mörfjarðará við Bakkafl	147	144	183	248	242	135	80	39	15	39	32	116	168	206	186	235	136	101	192	172	60	170	96	101	145	116	108	98	165	152	141	195	155	198	203	236	349	392	155	392	15				
Selá í Vopnafirði	589	711	845	1463	1394	767	637	192	168	229	123	627	1258	1523	1102	895	634	772	1318	1092	631	1160	737	685	1140	991	1360	1108	1653	1558	1670	2316	2726	2227	2033	1990	2051	2053	1169	2726	123				
Vesturdalá	391	329	326	513	498	268	141	42	34	61	47	280	197	380	231	226	163	116	264	321	218	329	201	216	159	71	129	124	269	175	88	102	104	158	136	206	258	316	213	513	34				
Hofsá og Sunnudalá	1277	1117	1253	1273	1336	599	615	145	141	258	185	1219	1631	1710	1210	809	552	642	2238	2028	1012	1028	826	607	1008	1020	804	906	1911	1483	1864	1965	2058	1423	1119	1141	1161	952	1119	2238	141				
Seláfljóti og Gilsá					77	32	19	7		6	15	16	65	70	32	12	5	26	42	90	98	16	32	8	18	25	20	22	41	26	31	47	60	45	103	72	100	100	122	44	122	5			
Fjarðará í Borgarf. eystri				44	27	13	5	1									6																												
Breiðdalá	126	123																																											

Table 17 Catch of brown trout in some Icelandic rivers 1987 - 2011. Migratory and stationary stocks are included.

River	Y E A R																					Average	Max	Min					
	1987	1988	1989	1990	1991	1992	1993	1994	1995	1996	1997	1998	1999	2000	2001	2002	2003	2004	2005	2006	2007	2008	2009	2010	2011	catch	catch	catch	
Laxá í Leirársveit	157	251	194	219	221	223	180	183	153	157	116	189	239	176	209	406	179	241	97	104	75	46	92	80	53	170	406	46	
Andakvíslá	4	6	1	5	0	2	1	0	3	1	7	3	4	8	4	2	67	9	3	3	6	11	2	4	1	6	67	0	
Hvítá í Borgarfirði	152	190	99	192	0	149	155	364	305	722	264	583	358	924	663	486	662	729	992	617	495	530	673	560	721	463	992	0	
Grímsá og Tunguá	71	49	49	74	4	216	108	357	188	30	136	213	189	250	291	313	175	339	119	171	174	143	74	51	250	161	357	4	
Þverá og Kjarrá	35	80	36	99	0	121	98	109	152	247	101	247	263	463	266	258	299	375	147	180	89	62	69	10	52	154	463	0	
Álftá	29	46	57	108	184	191	156	220	251	261	298	332	324	443	338	179	238	309	269	189	211	103	141	78	100	202	443	29	
Hítará	5	17	14	30	23	23	39	0	34	61	33	25	30	29	28	38	36	42	43	27	13	41	33	50	34	30	61	0	
Hörðudalsá	7	0	5	8	0	0	0	0	0	0	0	0	0	0	0	0	0	0	0	0	0	0	0	0	0	0	1	8	0
Miðá og Tunguá	0	0	0	1	0	4	0	1	0	0	0	0	0	2	2	0	0	0	0	0	0	0	0	0	0	0	0	4	0
Haukadalsá neðri	0	0	1	0	0	4	0	0	0	0	0	0	0	0	1	1	0	0	1	0	0	0	0	1	2	0	4	0	
Haukadalsá efri	0	0	0	3	1	0	1	0	14	0	2	0	7	1	0	5	1	0	0	5	0	1	0	4	2	2	14	0	
Staðarhólsá og Hvolsá	3	2	3	2	6	3	1	2	1	2	4	2	2	3	1	3	28	0	0	2	0	2	0	0	0	3	28	0	
Fjarðarhornsá	0	2	1	0	0	0	0	0	0	0	0	0	0	0	0	0	0	0	1	3	6	1	1	0	0	1	6	0	
Selá í Steingrímsfirði	0	0	0	0	0	0	0	0	0	0	0	0	0	0	0	0	0	1	0	0	0	0	0	0	1	0	1	0	
Staðará í Steingrímsfirði	0	0	0	0	1	0	0	0	0	0	0	0	0	14	0	0	1	10	0	1	0	0	0	0	1	1	14	0	
Hnútafjarðará og Síká	1	1	0	2	7	1	0	0	2	1	2	0	1	0	1	2	4	0	2	5	2	2	0	2	0	2	2	7	0
Miðfjarðará	20	16	7	58	41	6	10	7	9	3	2	2	15	6	9	6	22	37	12	26	41	50	42	64	15	21	64	2	
Víðidalsá og Fitjá	0	3	26	13	41	34	23	14	16	42	52	316	80	151	143	198	60	307	364	166	291	27	597	133	175	131	597	0	
Vatnsdalsá	366	685	245	667	571	506	335	388	450	318	300	617	520	695	807	670	729	729	684	1567	1509	1863	2021	2794	2700	909	2794	245	
Fremri Laxá á Ásum	1069	2352	338	2965	4121	3911	2709	2744	2011	1301	2379	2567	2496	2980	3278	3666	3646	4602	3884	5279	4549	5456	4009	3376	3622	3172	5456	338	
Húseyjarkvísl	60	7	12	426	476	483	369	540	373	349	407	373	349	397	277	559	587	427	330	397	597	644	650	868	635	424	868	7	
Hrollleifsdalsá	0	13	7	34	102	59	53	113	32	126	86	73	81	87	75	173	137	326	170	181	371	111	158	112	371	0	0	0	
Flókadalsá	87	27	93	111	109	54	82	0	81	29	36	169	244	263	249	419	401	398	311	181	237	0	560	538	195	560	0	0	0
Fljótaá	0	3	0	10	0	0	0	0	0	1	1	0	0	0	0	1	0	1	0	0	1	0	0	1	6	1	10	0	
Svarfaðardalsá				24		44	23	40	18	44	26	39	30	52	156	111	80	61	123	65		42	119	228	186	76	228	18	
Hörgá				23	79	25	24	38	11	46	43	26	36	39	31	8	43	93	49	25	95	138	259	306	269	78	306	8	
Eyjaþfjarðará	34	49	26	67	165	86	100	153	130	146	138	142	169	241	202	352	418	483	389	232	116	90	268	411	396	200	483	26	
Fnjóská	20	8	14	14	31	25	12	45	27	31	53	25	44	22	28	40	73	79	111	49	42	63	119	201	90	51	201	8	
Skjálfandaflljót	591	99	150	119	79	88	44	53	6	18	25	89	69	17	70	55	35	68	50	69	171	119	180	33	56	94	591	6	
Laxá í Aðaldal	835	894	1079	1275	1465	1286	1307	705	900	594	929	1068	1232	1647	1796	1542	905	1386	1513	1149	1125	271	1329	613	571	1097	1796	271	
Laxá ofan Brúa	0	3158	4861	4247	2792	2613	2316	1942	2281	2478	3700	7947	6313	6522	5863	4526	5091	6293	7915	7714	6909	4547	2013	4501	4549	4444	7947	0	
Litlaá		710	610	422	784	684	730	583	464	416	269	427	466	512	1662	922	1022	1014	626	393	619	587	829	1038	1289	712	1662	269	
Ormarsá	35	50	21	20	31	28	15	42	9	33	17	11	18	35	44	42	97	92	82	56	79	80	53	64	171	49	171	9	
Selá í Vopnaf.	3	8	10	14	9	2	4	2	8	9	6	5	14	8	5	9	7	18	3	4	4	5	4	0	12	7	18	0	
Vesturdalsá	3	1	9	5	4	4	0	6	1	1	0	0	19	2	0	0	0	0	0	2	0	2	3	1	0	3	19	0	
Hofsá og Sunnudalsá	11	8	53	31	50	43	54	22	24	30	49	32	29	39	27	34	58	133	113	75	130	109	87	121	101	59	133	8	
Gílsá og Selfljót	33	12	15	72	70	53	39	20	27	45	77	67	34	88	54	65	93	92	240	133	215	174	167	325	178	96	325	12	
Breiðdalsá	197	31	15	148	169	245	117	307	242	306	375	214	146	143	315	285	517	549	657	517	309	306	282	396	205	280	657	15	
Geirlandsá	362	303	356	193	88	109	108	118	251	235	389	274	151	237	159	193	140	404	231	187	205	357	211	339	235	233	404	88	
Skaftá	977	715	725	221	436	366	464	612	388	813	969	407	456	550	836	1305	1152	1093	1038	1171	689	807	1039	1470	470	767	1470	221	
Eldvatn í Meðallandi	84	170	92	35	27	38	112	129	171	192	161	215	57	53	58	78	76	151	168	172	168	245	192	252	197	132	252	27	
Grenlækur		700	894	1425	1648	2640	2338	3311	3638	2730	2493	1679	1293	1264	864	1331	1189	1700	1429	940	828	678	623	905	970	1563	3638	623	
Tungufljót	62	67	148	84	134	134	249	156	174	239	384	224	273	286	286	347	345	529	380	324	414	276	271	283	240	252	529	62	
Heiðarvatn			215	399	301	373	284	255	116	102	212	269	277	326	609	378	410									302	609	102	
Rangár og Fiská				179	163	527	359	337	230	393	635	468	487	494	547	216	772	934	594	398	470	80	306	359	413	426	934	80	
Ölfusá		60	29	44	70	52	58	366	53	103	161	513	399	301	911	741	1006	227	797	246	71	98	331	94	613	306	1006	29	
Sog	2	6	8	6	10	7	6	11	15	29	23	37	40	28	27	43	22	34	104	63	55	66	31	70	146	36	146	2	
Hróarholtslækur	403	550	465	322	391	449	301	580	374	326	492	1011	680	765	931	949	924	920	1266	914	980	833	878	712	757	687	1266	301	

Table 18. Catch of Arctic charr in some Icelandic rivers 1987 - 2011. Migratory and stationary stocks are included.

River	Y E A R																					Avarage catch	Max catch	Min catch					
	1987	1988	1989	1990	1991	1992	1993	1994	1995	1996	1997	1998	1999	2000	2001	2002	2003	2004	2005	2006	2007				2008	2009	2010	2011	
Laxá í Leirásrveit	0	7	7	1	4	6	18	14	21	4	35	62	42	43	124	48	24	30	5	7	8	6	12	12	11	22	124	0	
Andakilsá	10	231	284	479	3	341	0	3	218	189	238	116	84	131	294	194	203	282	147	49	28	21	47	12	3	144	479	0	
Hvítá í Borgarfirði	27	9	15	19	613	88	106	14	12	4	4	78	11	2	886	653	601	664	342	312	26	253	287	133	22	207	886	2	
Grímsá og Tunguá	1	2	2	24	250	12	3	6	1	1	0	4	4	1	7	4	1	2	1	1	6	1	4	5	3	14	250	0	
Þverá og Kjarrá	3	9	111	76	113	14	35	25	9	7	63	2	5	8	19	13	15	10	3	5	1	2	0	1	4	22	113	0	
Álftá	0	1	2	1	4	6	10	9	2	3	6	6	0	7	0	4	2	3	0	5	0	0	0	0	2	3	10	0	
Hítará	193	134	132	234	518	396	184	0	259	131	426	7	344	146	136	129	126	80	57	23	58	34	47	35	14	154	518	0	
Hörðudalsá	18	291	231	614	451	340		271	423	361	1021	1003	453		907		81	80	11		223	39	6	15	342	1021	6		
Miðá og Tunguá		73	70	470	478	650	530	411	674	350	396	825	925	591	1009	593	273	432	184	120	328	350	125	121	152	422	1009	70	
Haukadalsá neðri	679	7	21	8	74	8	57	111	71	8	36	12	58	42	22	19	50	30	21	20	17	2	8	7	25	57	679	2	
Haukadalsá efri		22	14	237	919	149	267		590	739	593	892	949	731	93	644	453	276	278	135	240	367	64	370	151	399	949	14	
Staðarhólsá og Hvolsá	401	224	338	941	882	397	616	733	934	1490	1316	1469	1016	949	583	439	487	1000	375	323	549	283	379	234	124	659	1490	124	
Fjarðarhomsá	20	107	306	562	536	233	73	80	135	165			47		93	129	116	179	100	273	184	185	53	52	22	166	562	20	
Selá í Steingrímsfirði	261	12		229	334	259	77	404	145	356			171	246	529	0	90	68	640	217	81	81	195	54		212	640	0	
Staðará í Steingrímsfirði	584	35	13	183	385	265	254	163	201	92	164	288	76	297	275	84	550		107	34	44	234	72			200	584	13	
Hrútafjarðará og Siká	269	59	68	221	532	192	135	129	221	499	363	564	346	610	358	221	303	180	158	159	100	213	66	148	119	249	610	59	
Miðfjarðará	236	167	89	221	273	152	97	123	144	47	267	304	277	97	316	148	225	235	180	216	61	256	299	122	71	185	316	47	
Víðidalsá og Fitjá	1325	366	26	377	547	467	676	1214	3485	2782	1551	5568	3824	3138	1903	1143	2144	3004	1118	1460	1725	213	986	1728	1016	1671	5568	26	
Vatnsdalsá	727	1182	270	1642	1851	1112	1427	1058	812	2498	1861	1438	2755	2712	1919	1975	1430	1186	779	724	1000	1478	1340	1345	1319	1434	2755	270	
Fremri Laxá á Ásum	137	236	15	34	52	35	6	26	41	61	52	64	27	153	53	23	8	12	0	3	3	0	4	2	13	42	236	0	
Húseyjarkvísl	7	2	8	64	28	17	32	44	48	45	30	46	17	8	18	14	27	12	6	27	14	25	10	7	3	22	64	2	
Hrollleifsdalsá		47	45	221	401	410	381	628		218	198	377	325	311	281	397	409	346	261	166	152	159	196	329	203	281	628	45	
Flókadalsá	110	1028	280	2134	2198	1144	1040	1673	489	265	1135	655	2405	775	1539	1169	2279	2473	1084	499	380	528	283	1634	1223	1137	2473	110	
Fljótáá		1	44	627	643	881	1242	7071	6928	6931	1648	893	792	944	298	164	288	508	215	357	208	438	1255	1493	1978	1494	7071	1	
Svarfaðardalsá				873	1049	668	1691	358	417	475	526	704	560	842	378	310	407	311	567		400	1058	825	343	638	1691	310		
Hörgá				1692	1394	1238	1783	1590	1063	1245	1293	1229	856	1216	1373	1110	935	964	896	670	860	843	794	1054	739	1129	1783	670	
Eyjafjarðará	1557	1467	127	2123	2836	3095	3080	3319	2151	2098	3625	3137	2900	2620	2931	1954	1678	2052	1516	916	610	723	672	736	593	1941	3625	127	
Fnjóska	496	217	238	390	469	239	251	550	391	339	409	579	700	612	695	370	736	545	355	781	598	850	474	583	485	494	850	217	
Skjálfandaflljót	275	338	561	391	331	160	173	198	151	214	506	403	658	1034	356	357	338	239	116	218	292	397	402	217	234	342	1034	116	
Laxá í Aðaldal	35	187	114	137	86	48	114	57	52	29	64	52	48	115	121	91	37	27	22	8	25	2	15	26	17	61	187	2	
Laxá ofan Brúa	0	19	63	16	10	3	5	1	3	7	42	412	145	41	5	4	8	16	21	16	7	2	1	1	5	34	412	0	
Litlá		297	307	310	368	551	259	220	193	131	104	97	123	117	388	199	249	97	110	31	67	128	77	202	268	204	551	31	
Ormarsá	245	114	141	181	175	127	131	126	103	101	68	93	129	128	56	62	53	30	109	60	69	54	52	20	239	107	245	20	
Selá í Vopnaf.	249	56	52	211	105	103	51	106	84	164	115	37	55	72	53	49	63	60	50	18	33	12	32	16	13	74	249	12	
Vesturdalsá	506	51	78	513	1402	726	321	383	474	872	1080	457	815	864	1079	502	1002	557	342	223	241	417	370	412	173	554	1402	51	
Hofsá og Sunnudalsá	357	32	143	67	357	471	268	261	183	344	250	246	557	744	30	207	276	559	247	154	247	152	385	393	130	282	744	30	
Gilsá og Selfjót	230	61	71	455	382	368	242	381	261	532	421	221	340	375	469	426	447	491	429	347	310	304	178	295	130	327	532	61	
Breiðdalsá	453	74	70	600	22	23	410	369	977	396	197	235	415	601	1121	567	628	881	1193	405	263	412	354	188	94	438	1193	22	
Geirlandsá	60	69	48	29	50	43	40	39	48	43	28	26	27	54	44	50	44	38	21	8	3	29	32	14	9	36	69	3	
Skaftá	17	19	12	1	5	7	19	28	13	21	16	19	27	42	25	33	14	13	5	25	12	25	18	17	17	18	42	1	
Eldvatn í Meðallandi	21	22	3	21	3	27	19	6	60	114	61	29	27	16	50	48	39	61	19	67	24	56	42	61	40	37	114	3	
Grenlækur	78	12	151	247	177	288	273	403	290	294	223	114	128	212	283	209	267	252	145	84	99	48	50	17	181	403	12		
Tungufljót	63	37	28	107	65	46	43	85	67	60	53	52	40	66	130	62	79	74	23	6	6	18	46	34	54	130	6		
Heiðarvatn		106	203	213	319	159	296	131	89	498	616	385	331	1021	188	433										333	1021	89	
Rangár og Fiská			75	65	106	90	83	94	165	150	72	54	95	88	75	89	50	40	20	15	16	54	35	63	72	165	15		
Ölfusá		8	7	12	17	12	10	72	40	20	30	21	11	16	26	26	21	16	7	6	4	4	2	4	6	17	72	2	
Sog	255	312	227	426	558	173	130	209	316	914	754	860	455	451	765	752	529	508	449	102	177	198	279	99	150	402	914	99	
Hróarholtslækur	13	134	110	144	84	172	92	136	169	360	80	113	96	55	52	84	38	65	21	13	4	12	27	5	8	83	360	4	

Table 19. Catch, by region in netfisheries in 2011 in numer and weight (kg).

Area Area/River	Atlantic salmon		Brown trout		Arctic charr	
	number	weight	number	weight	number	weight
Reykjanes Total	0	0	0	0	0	0
Borgarfjörður netaveiði í sjó	1	2	191	168	6	2
Hvítá Borg. neðri hluti	16	42	260	236	62	46
Hvítá efríhl. og Norðurlingfl.	136	370	7	8	17	18
Vesturland Total	153	414	458	412	85	66
Vestfirðir Total	0	0	0	0	0	0
Amarvatn-Stóra			1420	1704	51	51
Héraðsvötn	11	31	18	41	210	179
Norðurá *						
Miklavatn í Fljótum *						
Norðurland vestra Total	11	31	1438	1745	261	230
Skjálfafljót	52	177	460	460		
Vestmannsvatn *						
Mývatn			2062	2062	597	597
Norðurland eystra Total	52	177	2522	2522	597	597
Lagarfljót	14	48	1	6	0	0
Austurland Total	14	48	1	0	0	0
Skaftá			80	169	2	2
Kúðafjót	37	120	96	284	12	30
Mjóásvatn (Álftaveri) *						
Markarfljót Álár	2	7	2	5	0	0
Veiðivötn			2682	3452	3315	1599
Kvísilaveitur *						
Þjórsá	4945	13716	368	808	1	1
Laugarvatn *						
Apavatn			11751	5467	7597	2457
Úlfjótsvatn *						
Hvítá í Árnassýslu	2252	6315	199	399	53	63
Ölfusá	1263	3441	203	398	11	10
Suðurland Total	8499	23599	15381	10982	10991	4162
Total	8729	24269	19800	15661	11934	5055

* no records