

Catch statistics for Atlantic salmon Arctic charr and brown trout in Icelandic rivers and lakes 2014

Guðni Guðbergsson



VEIÐIMÁLASTOFNUN
Institute of Freshwater Fisheries

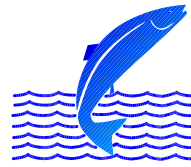


.....
F I S K I S T O F A

VMST/15023

**Catch statistics for Atlantic salmon Arctic charr
and brown trout in Icelandic rivers and lakes
2014**

Guðni Guðbergsson



VEIÐIMÁLASTOFNUN
Institute of Freshwater Fisheries



FISKISTOFA
Directorate of Fisheries

Institute of Freshwater Fisheries
Árleyni 22, 112 Reykjavík

Directorate of Fisheries
Dalshrauni 1, 220 Hafnarfirði

Reykjavik, June 2015

Contents

Introduction..... 1

Methods..... 2

Results..... 4

Discussion..... 6

Acknowledgements..... 8

Referances..... 8

Figures 10-14

Tables..... 15-33

Introduction

Five native species of freshwater fishes are found in Iceland. These are the salmonid species, Atlantic salmon (*Salmo salar*), brown trout (*Salmo trutta*) and Arctic charr (*Salvelinus alpinus*). The other two are, European eel (*Anquilla anquilla*) and three-spined sticklebacks (*Gasterosteus aculeatus*). Arctic charr and brown trout can have both resident and migratory forms. Atlantic salmon, Arctic charr and brown trout all have exploited stocks in rivers and lakes in Iceland.

The fishing season for salmon in Icelandic rivers is at the maximum of 105 days in the period from 20th of May to 30th of September. In rivers where salmon fishery is mainly based on release of reared salmon smolts (ocean ranching) the fishing season can be extended to 120 days and throughout October with permission from the Directorate of Fisheries (Fiskistofa). The daily fishing period is usually 12 hours, and the fishery must be closed for 84 hours each week. In most Icelandic rivers rod and line is the only fishing gear allowed. A fixed number of rods are used in each river. In most rivers fishing effort has remained almost unchanged from 1970. Each Fishery association needs to make a plan that outlines the management strategy. The management plan needs approval by the Directorate of Fisheries after a review by the Institute of Freshwater Fisheries. The length of the fishing season, gear and effort allowed for fishing landlocked brown trout and Arctic charr is decided by local fishery associations (landowners). The fishing season for sea trout (migratory brown trout) and sea charr (migratory Arctic charr) can be decided by fishery associations (landowners) from 1 April to 10th of October with a possible extension to 20th of October for fish stocks in good condition with exploitable surplus for harvest. The 10 day extension needs approval by the Directorate of Fisheries.

Net fishery is almost exclusively bound to the largest glacial rivers where angling possibilities are limited due to turbid water. In the net fishery gillnets are the most common fishing method and draftnet are the fishing method used at few locations for catching brown trout and Arctic charr. The weekly net fishing period lasts from Tuesday morning at 10 AM to Friday evening at 10 PM. The weekly fishing period in net fisheries is 84 hours, the same number of hours as the weekly fishing opening as in the rod fishery. The weekend closure, in the net fishery, is to reduce fishing effort and enhance fish migration to the up rivers regions and tributaries.

There has been a general ban, by law, on ocean salmon fishing in Icelandic waters since 1932. An exception to that were five localities (farms) in West Iceland with coastal fishery (Figure 1). At these localities coastal gillnets set from land were used. These fishing rights were permanently bought out in 1997 by fishery associations in nearby rivers and with

governmental support. This was possible since salmon caught by anglers are of much higher economic value than salmon caught in the net fishery. All salmon harvested in Iceland is in freshwater and mostly based on exploitation of a single stock.

The fishing rights go with the ownership of the land adjacent to the rivers. The landowners are usually farmers. All the landowners of the fishing rights in a river system have by law to form a fishery association, which manages the exploitation of the fish stocks, within the frame set by the law. Usually the rivers fishery association rents or leases the fishing rights to angling syndicates, angling clubs or directly to anglers. The entire riverbank is accessible to the limited number of rod fishermen that have fishing permit each day. Most rivers have fishing lodges with high quality accommodation.

The catch is recorded in special logbooks in the fishing lodges. The logbook recording system was established in 1946. At the end of the fishing season the logbooks from every river are gathered and statistical information are processed by the Institute of Freshwater Fisheries. A statistical report is sent back to the fisheries associations as well as new logbooks before the next fishing season. Online electronic catch recording in a central database is now possible and can be accessed through the Institute of Freshwater Fisheries web page (http://www.veidimal.is/default.asp?Sid_Id=53634&tId=1&Tre_Rod=001|003|001|&qsr)

Catch statistics for Atlantic salmon, brown trout and Arctic charr from Icelandic rivers and lakes for the 2013 fishing season have now been compiled and the main results are summarized in this report. This work is based on Gudbergsson (2015), **Lax- og silungsveiðin 2014**, a report from the Institute of Freshwater Fisheries (in Icelandic). The Atlantic salmon, brown trout and Arctic charr catch statistics have been compiled this way annually since 1987.

Methods

Iceland is divided into statistical regions regarding to salmon catches (Figure 1). Information on the catch is summarized in tables for each region. The results from all regions are then combined for the whole country. The catch statistics for each river is summarized by fishing gear used. Rod and line is the most common harvesting methods but gillnets and draft nets are also used. The number of fish released (catch and release) from the rod fisheries are recorded. In previous years ocean ranching harvest has also been summarised. However, there has not been any release of smolts for commercial ocean ranching of salmon since 1998.

By tradition, the weight of freshwater fish in Iceland was measured in pounds where 1 pound = 500 g. By a decision made in 1999 this was changed to kg and the accuracy of 0,1 kg was anticipated. Fish length is to be measured to the nearest cm. For each fish, date of catch, pool name and number, type of bait, whether the fish is landed or released, as well as the name of the fisherman is recorded in the logbook. Fishing pools are commonly numbered in the logbooks for ease of listing and computer processing.

The salmon catch can be divided by weight into grilse (1SW, one sea winter) and salmon (2SW, two sea winter). The split for the two sea-age classes is made from weight distribution where males up to 4 kg and females up to 3.5 kg are grilse (one sea winter) and larger fish are salmon (multi sea winter) where off the vast majority is two sea winter salmon. This deviation into sea age has been confirmed with aging by scales with relatively little overlap in the weight distribution (Scarnecchia 1983). Salmon with more than 2 winters at sea are rare in Iceland and repeated spawning has been in low percentages in later years.

Brown trout and Arctic charr are caught in many rivers as a by-catch with the salmon. In other rivers these are the most dominant and targeted fish species. In some rivers brown trout and Arctic charr are the dominant species at certain parts of the rivers especially at slow flowing areas at the lower regions of the rivers. In this report stationary trout and sea-trout were combined, and the same applies for sea-run Arctic charr and stationary Arctic charr.

In the rod fishery the number of fish caught and released has been increasing. At first this was done on a voluntarily basis by the anglers but in few rivers catch and release is the only allowed fishing method. Many rivers have fly-fishing only, release of two sea winter fish (fish larger than 69 cm) and bag limit of different magnitude is common. In most recent years, anglers have been encouraged by the Institute of Freshwater Fisheries, the Federation of Icelandic river owners and the Association of Icelandic angling clubs to release two-sea winter salmon in order to protect the two-sea winter salmon stock component. The catch statistics is processed for both the total catch including catch and released and the catch landed in numbers of fish and weight. Measure of length is more common than measure of weight for released fish. In cases where length is the only measure a known length weight relationship is used to calculate weight as a basis for determination of sea age composition of the catches.

In Iceland the rod catch in few rivers is based on the release of hatchery reared salmon smolts (ocean ranching to the rods). The catch in these rivers were 6.753 fish in 2014 and 20,1% of the total salmon rod catch. The catch in these rivers is reported separately since catch figures

are often used as a measure of stock abundance of wild salmon and as a measure of spawning stock size. Unlike rivers with wild salmon populations, most of the rivers with releases of hatchery smolts for angling fishery have poor nursery areas and the returning adult fish do not contribute to the spawning stock.

Results

A total of 33.598 salmon were caught in rod fisheries in Icelandic rivers in 2014 where off 13.616 (40,5%) was released and the catch landed (caught and retained) was 19.982 salmon (Table 1). The catch landed by weight was 55.769 kg. In the rod fishery the catch of grilse (1SW) were 22.180 fish (66%) and 32.657 kg and 11.413 salmon (MSW) (34%) weighing 23.113 kg. Of the total number of released fish 6.584 (48,4%) were grilse and 7.006 (51,4 %) salmon. Of the statistical regions the highest number of fish was caught in the rod fishery in the Vesturland region 8.792 fish where off 2.725 were released and the catch landed was 6.067 fish and 13.525 kg. There were fewer fish recorded in other areas (Table 1).

The catch in the net fishery was 3.756 fish and 12.563 kg in total. In the net fisheries the highest number of fish was caught in the Sudurland region, 3.663 fish and 12.313 kg (Table 2). Of the net catch 2.368 fish was grilse (1SW) weighing 4.792 kg and 1.388 salmon (MSW) weighing 7.771 kg.

The total combined salmon catch landed (rod and nets) in Iceland 2014 was 23.738 fish and 68.333 kg, there off 17.764 were 1SW and 5.774 MSW. The total 1SW catch was 34.449 kg and the MSW catch was 30.884 kg (Table 3).

The total number of brown trout caught in rod fishery was 32.990 fish, 8.806 were released and the catch landed was 24.182 fish and 28.154 kg (table 4). The total number of Arctic charr in the rod fishery was 24.548 fish, 3.250 were released and the catch landed was 21.298 fish and 16.130 kg.

The salmon rod catch in 2014 was 34.444 lower in number and only about half the catch in 2013 (table 5; figure 2). The total rod catch in 2014 was 17,8% lower than the average catch in the 40 years period from 1974 to 2013. The salmon catch in the net fishery was 3.756 fish, close to one third the catch in 2013 and also one third of the average catch in the period from 1974-2013 (Table 5, Figure 3).

In 2014 the rod catch in rivers where the catch is mainly based on releases of hatchery reared smolts was 6.753 fish that is 20% of the total number of fish caught and 6,1 tonnes. The rod catch of wild salmon in 2014 was 26.845 fish and 13,8 tonnes (Table 5, figure 3). In total 40,5% of the salmon rod catches was released and 48,6% of the wild salmon was released in the rod fishery.

The catch landed of wild salmon in 2014, rod and net catch combined, was 23.645 fish that is close to half the average catch landed in the period from 1974-2013 also of the catch in 2013 (56.492).

No commercial ocean ranching activities have been operating since 1998. In previous years, substantial activities of ocean ranching with Atlantic salmon was operated in Iceland reaching up to 168 thousand fish caught in 1993 as the highest catch (harvest) (Table 5; Figure 4).

The highest number of salmon caught in rod fishery was in River Ytri-Rangá 3.070 fish with River Eystri-Rangá in second place with 2.529 fish. The angling fishery in both these rivers is based on releases of hatchery smolts (ranching to the rods). The angling catch in River Blanda and its tributary Svartá came in third place with 2.225 wild salmon. The list of top 10 salmon rivers is shown in table 6. The top 3 list for catch landed also showed Ytri-Rangá with 2.652 fish landed and Eystri-Rangá with 2.416 landed fish and River Blanda with landed catch of 1.888 fish.

The top 10 list of brown trout is shown in table 7 and the top 10 list of Arctic charr is shown in table 8. The catch of brown in Iceland was relatively stable for the first decade of the 21st century but showed decrease for the last 3 years (Figure 5). The catch of Arctic charr has generally been decreasing since 2000 (Figure 6). The decrease in the Arctic charr catch may to large extent reflect the stock size and is causing serious concerns for the status of the spawning stocks in many rivers. The catch of brown trout has increased in some rivers where the Arctic charr have declined.

The rod catch records for individual rivers are listed by statistical areas in tables 9-15. The salmon catch in most Icelandic rivers are listed in table 16 for the period from 1974-2014 including average catch, maximum and minimum catch in the 41 year period. The rod catch of brown trout from 1987-2014 (28 years) is listed in table 17 and of Arctic charr is listed in table 18.

The catch in the net fisheries divided by species, rivers and regions is listed in table 19. The highest net catch of salmon was in River Thjórsá with 2.250 salmon caught.

The sea-age composition of the salmon catches is shown in figure 7. The figure includes rivers with annual catch records since 1970 and includes 88% of the average the annual salmon catch. It is worth noticing that after high catch in the 1980s the catch of 1SW salmon decreased after 1979 and increased after 1985. The MSW salmon showed similar pattern until 1980 but opposite to the increasing catch of 1SW fish the MSW salmon stock component showed a decline from the mid 1980's to 2000. After 2000 the declining trend of MSW salmon seems to have turned. Due to the decline of the MSW salmon component anglers are kindly asked to release MSW salmon in order to prevent the MSW component from overfishing and to conserve the MSW genetic resources in the salmon stocks.

Catch and release in the rod fishery has increased from 1996 when first recorded. In 2014 the percentage catch and released was 40,5% of the total salmon rod catch in 2014 but 51,4% of the wild salmon (Figure 8). Catch and release was 29,7% of the total grilse catch (1SW) and 34,4% of the wild grilse (Figure 9). The proportion of catch and release of salmon (MSW) was 61,4% in total and 72,0% of the wild salmon.

Catch and release for brown trout and Arctic charr have increased and was 15,4% for Arctic charr and 25,6% for brown trout in 2014 (Figure 10).

Discussion

Since 1932 there has been a general ban on ocean fishery for salmon in Icelandic waters with the exception of few locations with coastal fishery. The number of nets in rivers has been decreasing due to lease of nets, by river owner fisheries associations for not fishing. The fishing right in coastal areas was permanently bought out in 1997 by river owners with support from the government. From 1997 all salmon in Iceland were harvested in freshwater. The number of rods allowed and used in Icelandic salmon rivers has been stable since 1970. With stable effort the catch figures can to large extent be used as an indicator for changes in size of the salmon run. It can also be seen from the catch statistics that the salmon catch in rivers in the same area show similar fluctuations. Rivers where fish counters are operated show that exploitation remains stable over time although exploitation is slightly higher in years when the salmon run is low (Jonsson, Antonsson and Gudjonsson 2008, Gudbergsson and Antonsson 2008).

In Icelandic rivers the MSW salmon is dominated by 2SW fish. Longer sea phase than two years is rare and repeated spawning is in low percentages. The proportion of MSW fish is usually higher in rivers in the north and northeast Iceland than in the south and southwest regions. Since 1981-1983 the number of MSW salmon has been declining. This happened although the sex ratio of the run is stable with close to 65% females for MSW and 20% for 1SW for the period from 1973. That relates to higher mortality at the second year at sea in the later years (Gudbergsson and Gudjonsson 2003). The reason for this is not clear but this seems to relate to environmental conditions in the ocean (Gudjonsson et al. 1995). This might indicate changes in oceanic condition reflecting changes in the availability for food especially for salmon at their second year at sea. These changes have affected the catch in rivers with high proportion of 2SW salmon and also the size of the spawning stock since MSW salmon are dominated by females that have double the number of eggs to the 1SW females.

There are considerable fluctuations between years in the salmon catch in Iceland. Usually salmon catch in rivers in the same region show similar fluctuations. The size of the salmon run depends on the number of smolts produced in each river and their sea survival. It seems that common factors affect the production of smolts in the rivers in the same area and also the sea survival. Climatic factors are of seems to have strongest effects and significant correlation has been found between the catch of grilse and ocean temperature at the time the smolts are migrating in the spring or early summer (Scarnecchia 1984; Antonsson et al. 1996).

The exploitation rate in the rod fisheries, in Icelandic rivers, has been estimated 30-80% (Gudjonsson 1986). Recent information on exploitation in the rod fishery indicates that it can, in some rivers, be 50-60% for 1SW salmon and 60-80% for 2SW salmon (Gudjonsson et al. 1996, Jónsson et al. 2008). In rivers with fish counters it has been shown that the rod catch reflects the changes in stock size. Further studies on exploitation and the size of the spawning stock in Icelandic salmon rivers are needed.

The brown trout catch was generally stable for the first decade of the century past 12 with a decline for the past four years. Catch of Arctic charr on the other hand have shown a decrease from 2001. The decline in catch of Arctic charr is in all statistical area. The reasons for the decline in catch of Arctic charr are not known but can possibly relate to climate change. The mechanism for this is not fully understood and needs further studies. There are concerns that some Arctic charr stocks in Iceland do not have harvestable surplus. The fishing right owners should take the necessary precautions for decreasing or stopping the exploitation before the size of spawning stock and recruitment will become the limiting factor for the stock size.

Anglers are encouraged to record the trout and charr catch in the same manner as the salmon catch i.e. record each fish with information on length weight and sex of each fish etc. as listed in the log books. The catch record gives valuable information on fluctuation in fish stock and the compositions of the catches.

The status of the MSW salmon component is of major concern. The Institute of Freshwater Fisheries has encouraged the River Fisheries Associations to decrease the exploitation of the MSW salmon stock component.

Acknowledgements

Many of the staff at the Institute of Freshwater Fisheries has contributed to the compilation of the catch statistics in 2014. We are in thankful to River Fishery Associations, fishing right owners, Angling syndicates and last but not least individual anglers that have contributed with recording their catch in the fishing log books.

References

Antonsson, Th., Gudbergsson, G. and Gudjonsson, S. 1996. Environmental continuity in fluctuation of fish stocks in the North Atlantic Ocean, with particular reference to Atlantic salmon. *North American Journal of Fisheries Management* 16:540-547.

Gudbergsson, G. and Antonsson. Th. 2008. Tengsl stofnstærðar, sóknar og veiðihlutfalls hjá laxi í Elliðaánum. *Fræðaging landbúnaðarins* 5:242-249 (In Icelandic).

Gudbergsson, G. 2014. Lax- og silungsveiðin 2013. Report from The Institute of Freshwater Fisheries, VMST/14044. 37 pp. (In Icelandic).

Guðni Guðbergsson og Sigurður Guðjónsson 2003. Marine mortality of Atlantic salmon in Iceland. pp 110-114. In: *Marine mortality of Atlantic salmon, *Salmo salar* L: methods and measures.* E.C.E. Potter, N. Ó Maoiléigh og G. Chaput (Eds.) Canadian Science Advisory Secretariat. Research Document 2003/101.

Gudjónsson, Th. 1986. Exploitation of Atlantic Salmon in Iceland. In: *Atlantic Salmon: Planning for the future.* (ed.) Derik Mills and David Piggins.

Gudjónsson, S. Einarsson, S.M., Antonsson, Th. and Gudbergsson, G. 1995. Relation of grilse/salmon ratio to environmental changes in several wild stocks of Atlantic salmon (*Salmo salar*) in Iceland. *Can. J. Fish. Aquat. Sci.* 52:1385-1398.

Ingi Rúnar Jónsson, Þórólfur Antonsson og Sigurður Guðjónsson 2008. Stofnstærð lax (*Salmo salar*) og bleikju (*Salvelinus alpinus*) í samhengi við veiði. Fræðaðing landbúnaðarins. 5:234-241.

Jonsson, I.R., Antonsson, Th. and Gudjonsson. S. 2008. Icel, Agric. Sci. 21:61-68.

Scarnecchia, D.L. 1983. Age of sexual maturity in Icelandic stocks of Atlantic salmon (*Salmo salar*). Can. J. Fish. Aquat. Sci., 40:1456-1468.

Scarnecchia, D.L. 1984. Climatic and oceanic variations affecting yield of Icelandic stocks of Atlantic salmon. Can. J. Fish. Aquat. Sci., 41: 917-935.

Scarnecchia, D.L. 1984. Forecasting yields of two-sea-winter Atlantic salmon (*Salmo salar*) from Icelandic Rivers. Can. J. Fish. Aquat. Sci., 8:1234-1240.

Scarnecchia, D.L., Isaksson, A., White, S.E. 1989. New and revised catch forecasts for two-sea-winter Atlantic salmon (*Salmo salar*) in Icelandic rivers. J. Appl. Ichthyol. 5:101-110.

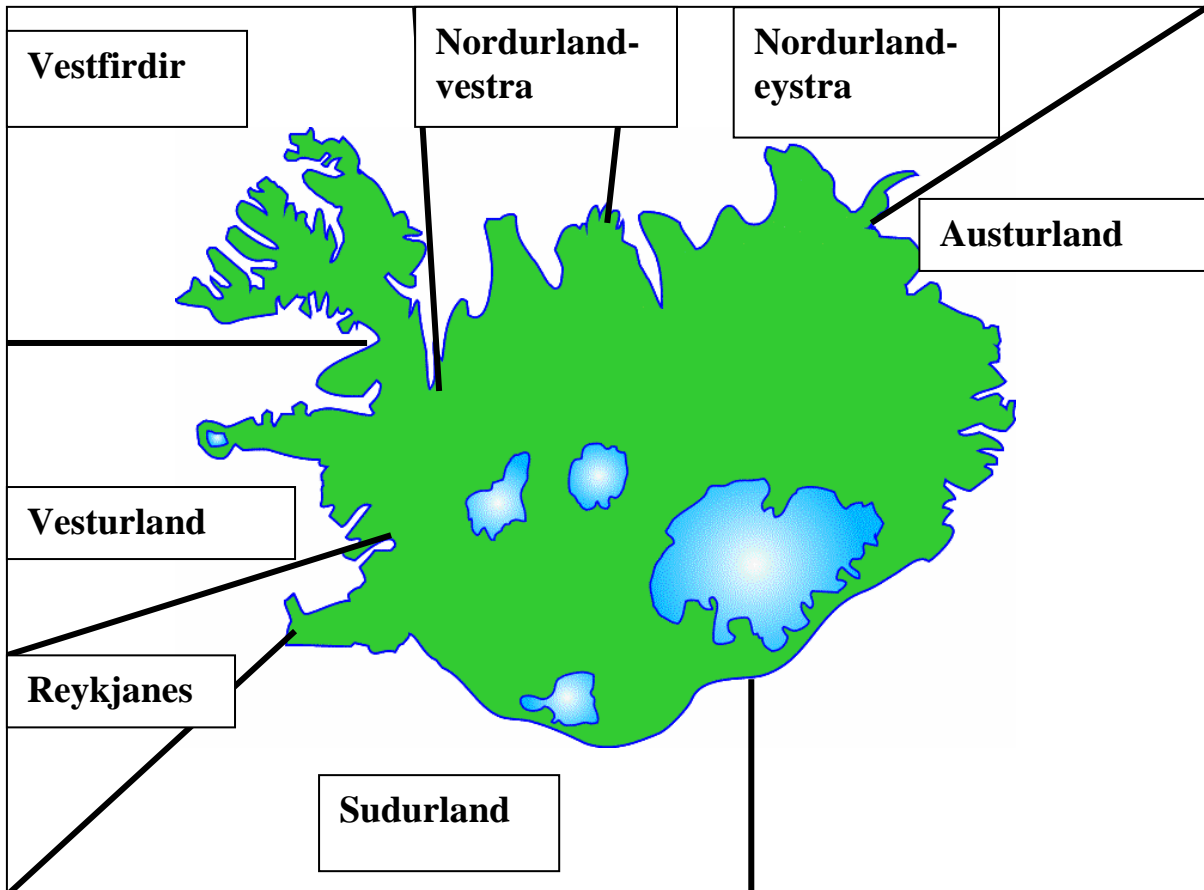


Figure 1. Statistical regions for the Atlantic salmon, brown trout and Arctic charr catch in Iceland.

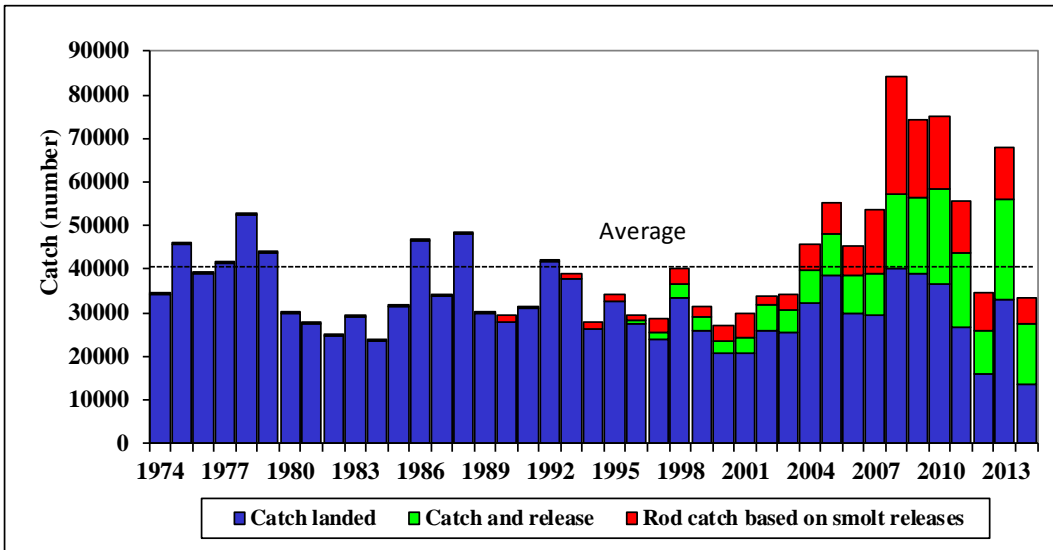


Figure 2. Salmon catch in rod and line fishery in Iceland 1974 - 2014. Catch landed (blue bars), catch and release (green bars) and catch in rivers with salmon fishery based mainly on smolt releases (red bars).

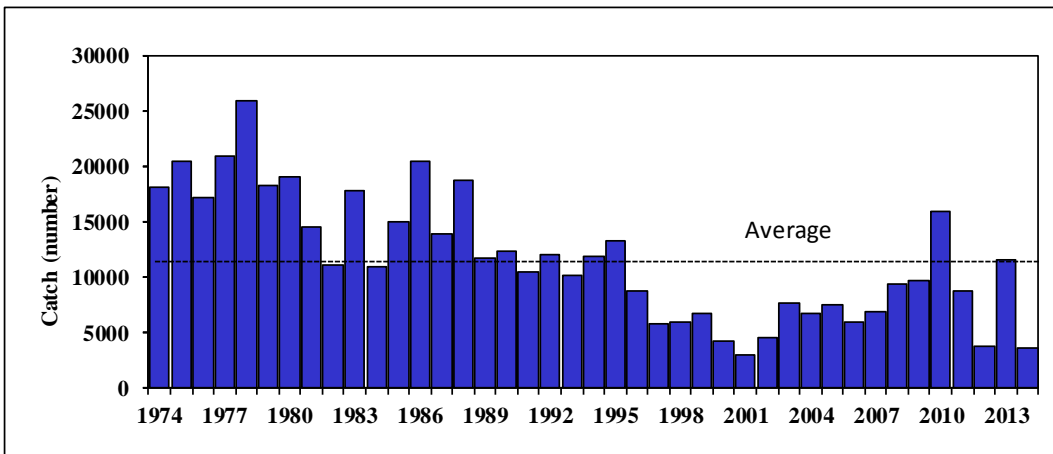


Figure 3. Salmon catch in gillnet fishery in Iceland 1974 - 2014.

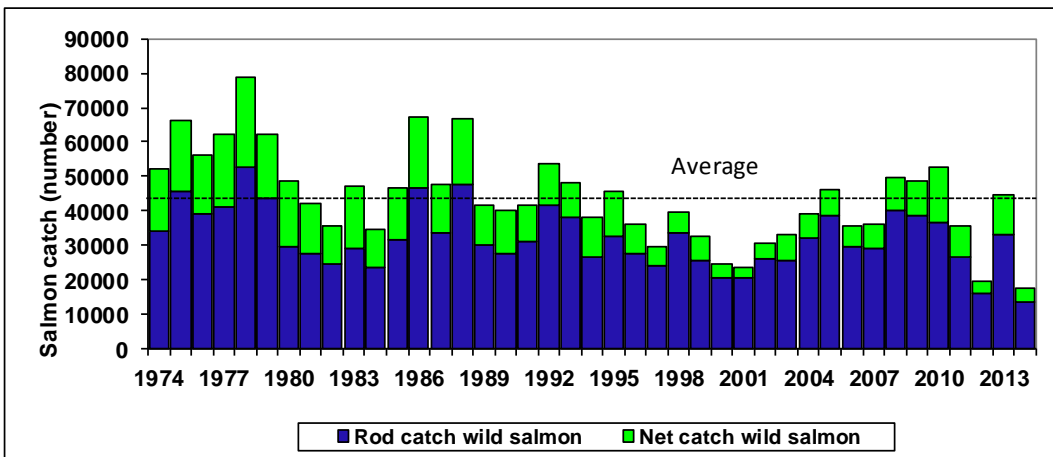


Figure 4. Salmon catch landed, wild salmon in rod fishery (blue bars) and net fishery (green bars) 1974-2014.

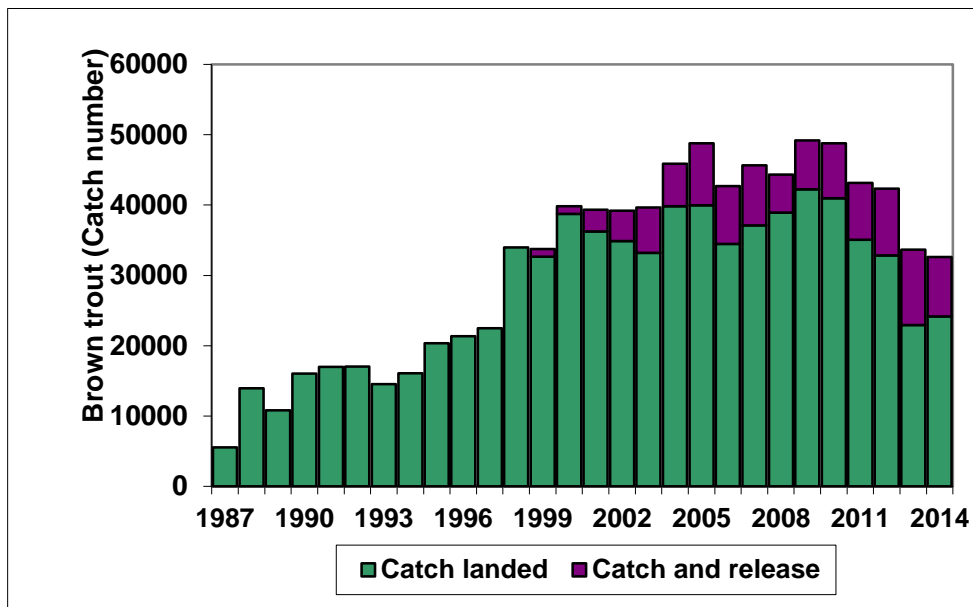


Figure 5. Catch and catch and released brown trout in the rod fishery in Iceland 1987-2014.

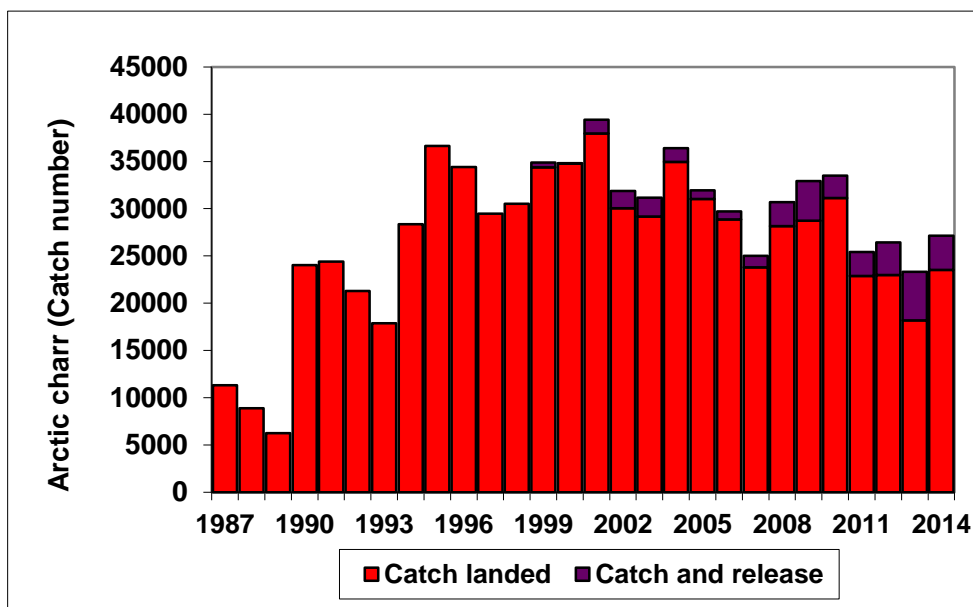


Figure 6. Catch and catch and released Arctic charr in the rod fishery in Iceland 1987-2014.

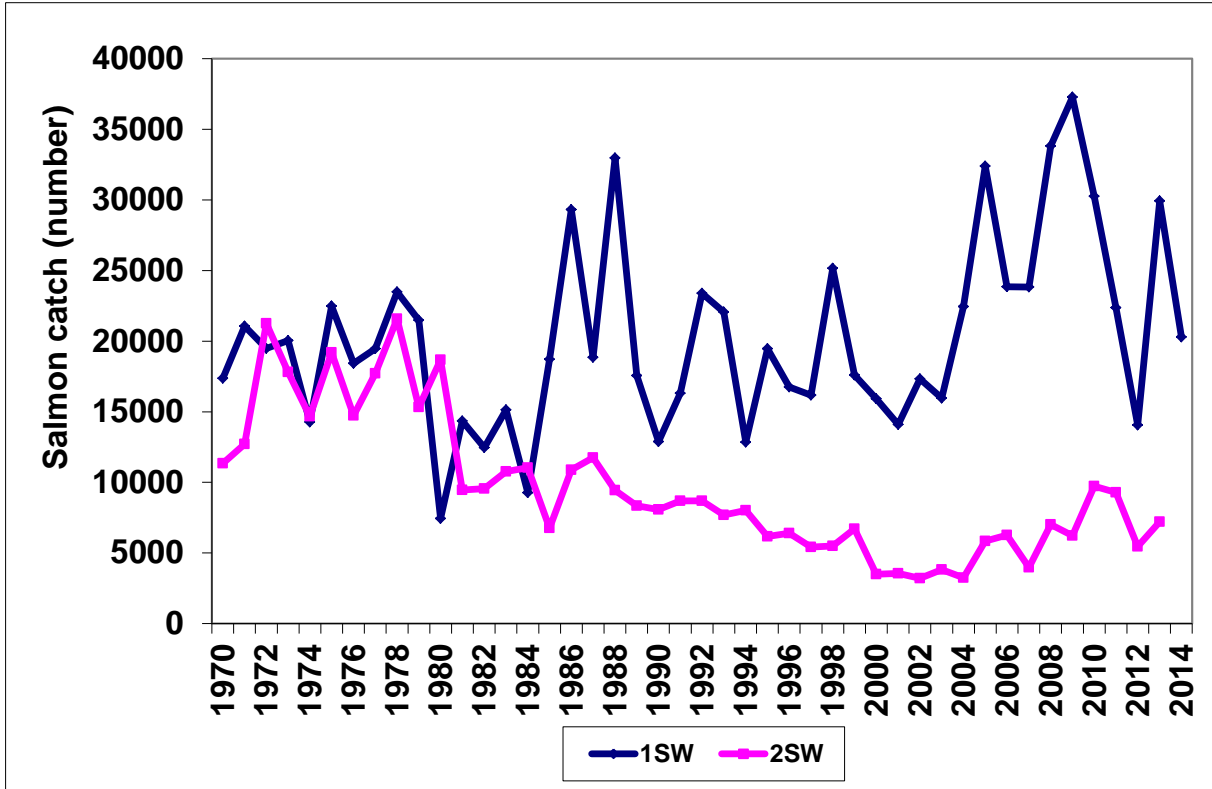


Figure 7. The sea-age composition, by smolt cohort, of Atlantic salmon in rod catches in Icelandic rivers 1970-2014 (1SW = one-sea-winter, 2SW = two-sea-winter).

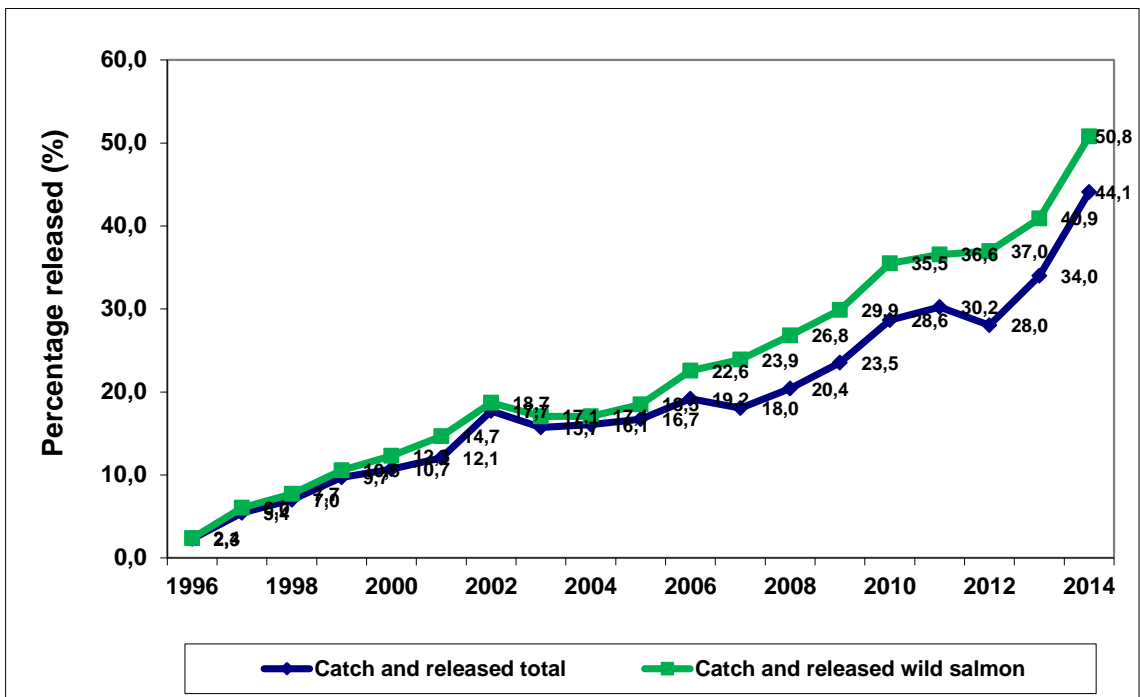


Figure 8. Percentage released salmon in the rod catch in Icelandic salmon rivers in 1996-2014 for the total catch and for wild salmon only.

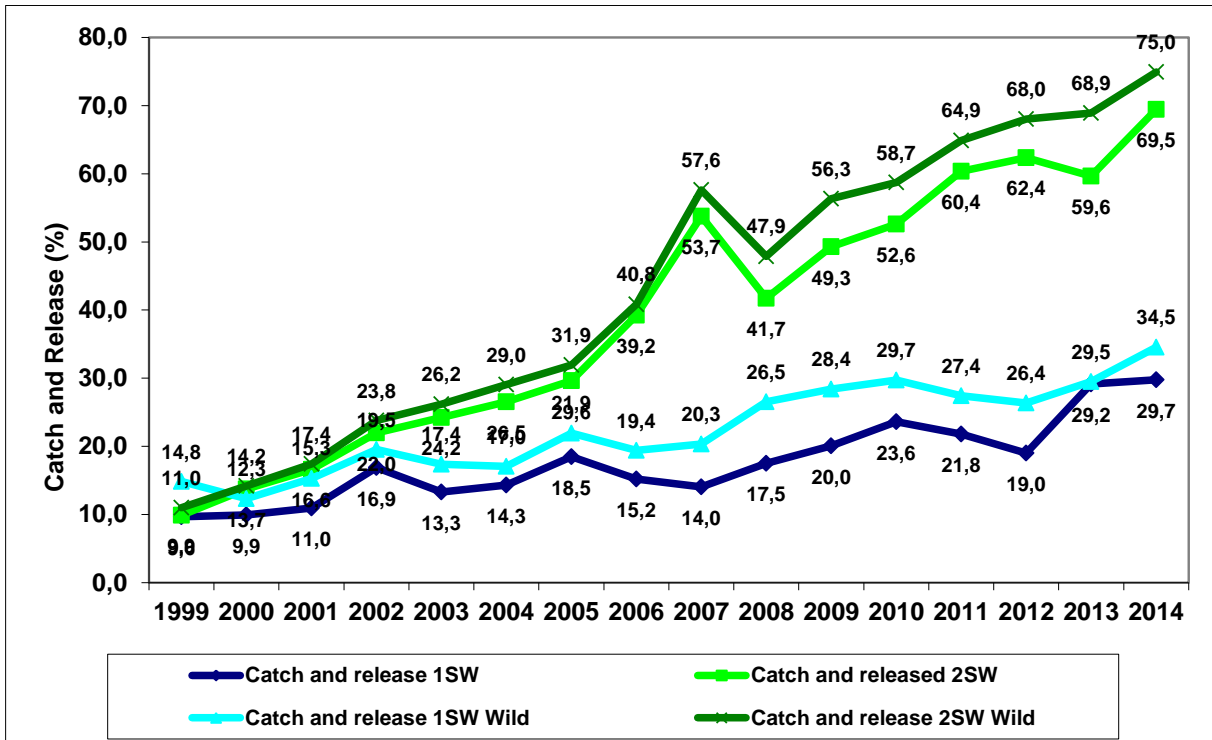


Figure 9. Percentage released fish in the rod catch in Icelandic salmon rivers in 1999-2014 for 1SW and 2SW salmon in the total catch and for wild salmon only.

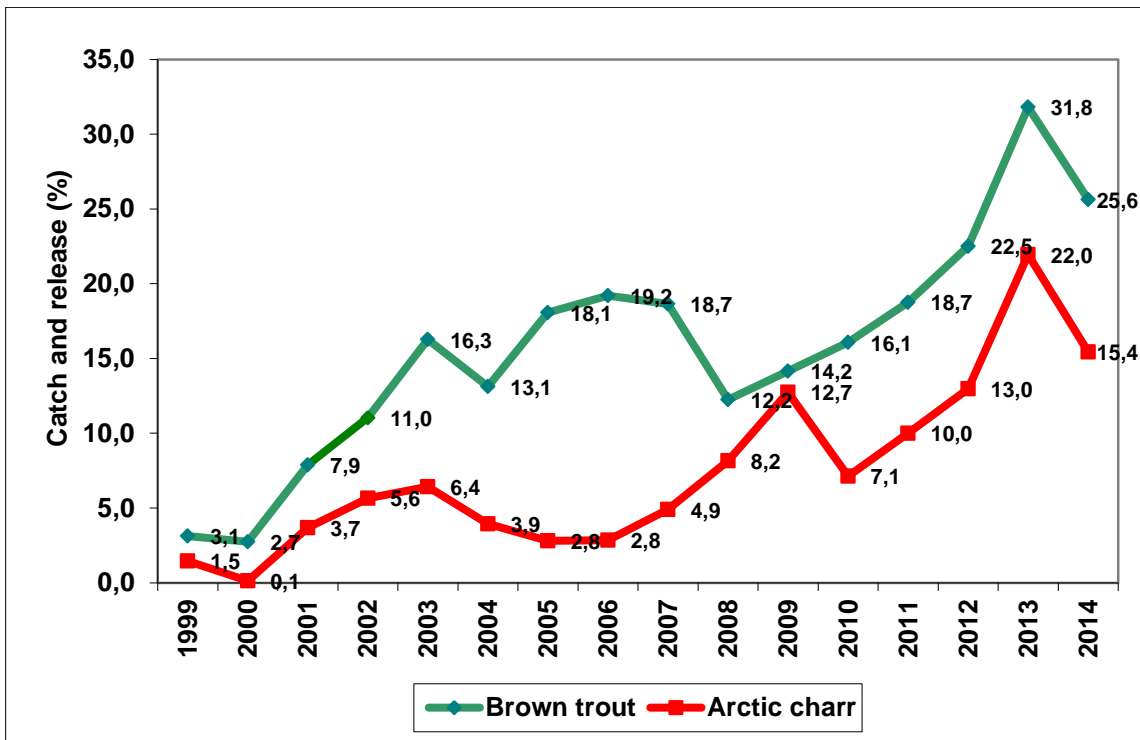


Figure 10. Percentage released brown trout and Arctic charr in the rod catch in Icelandic rivers and lakes in 1999-2014.

Table 1. Salmon catch, rod and line, in Icelandic rivers 2014.

Region	Salmon catch, rod and line											
	Catch	Released	Released	Released	Catch	Catch	Catch	MW	Catch	Catch	MW	Catch
	(number)	(number)	1SW (number)	2SW (number)	landed (number)	landed (kg)	1SW number	1SW (kg)	1SW (kg)	2SW (number)	2SW (kg)	2SW (kg)
Reykjanes	1784	488	403	85	1296	2702	1242	2,0	2438	54	4,9	264
Vesturland	8792	2725	1469	1256	6067	13525	5550	2,0	11088	517	4,7	2437
Vestfirðir	914	241	92	144	673	1844	546	2,2	1209	127	5,0	635
Norðurland vestra	7637	4530	2504	2026	3107	10272	2212	2,5	5420	895	5,4	4852
Norðurland eystra	3448	2351	670	1681	1097	4304	561	2,3	1315	536	5,6	2989
Austurland	2591	1779	674	1105	812	2420	605	2,2	1340	207	5,2	1080
Suðurland	8432	1502	772	730	6930	20703	4880	2,0	9847	2050	5,3	10856
Total	33598	13616	6584	7027	19982	55770	15596	2,1	32657	4386	5,3	23113

Table 2. Salmon catch, nets, in Icelandic rivers 2014.

Region	Salmon catch, nets						Ranched	
	Catch	Catch	Catch	Catch	Catch	Catch	Catch	landed
	(number)	landed (kg)	1SW number	1SW (kg)	2SW (number)	2SW (kg)	(number)	(kg)
Reykjanes	0	0	0	0	0	0	0	0
Vesturland	51	131	44	88	7	43	0	0
Vestfirðir	4	16	3	9	1	7	0	0
Norðurland vestra	3	5	3	5	0	0	0	0
Norðurland eystra	12	50	5	11	7	39	0	0
Austurland	23	48	18	38	5	10	0	0
Suðurland	3663	12313	2295	4641	1368	7672	0	0
Total	3756	12563	2368	4792	1388	7771	0	0

Table 3. Total salmon catch in Icelandic rivers 2014, rod, gillnets and ranched.

Region	Salmon catch total (rod, nets and ocean ranched)						Percentage of total	
	Catch	Catch	Catch	Catch	Catch	Catch	Number	Weight
	(number)	landed (kg)	1SW number	1SW (kg)	2SW (number)	2SW (kg)	%	%
Reykjanes	1296	2702	1242	2438	54	264	5,5	4,0
Vesturland	6118	13656	5594	11176	524	2480	25,8	20,0
Vestfirðir	677	1860	549	1218	128	642	2,9	2,7
Norðurland vestra	3110	10277	2215	5425	895	4852	13,1	15,0
Norðurland eystra	1109	4354	566	1326	543	3028	4,7	6,4
Austurland	835	2468	623	1378	212	1090	3,5	3,6
Suðurland	10593	33016	7175	14488	3418	18528	44,6	48,3
Total	23738	68333	17964	37449	5774	30884	100	100

Table 4. Catch of brown trout and Arctic charr in rod and line fishery in Icelandic river and lakes in 2014.

Region	Catch - rod and line Brown trout (sea-run and stationary)				Catch - rod and line Arctic charr (sea-run and stationary)			
	Catch (number)	Catch and released	Catch landed (number)	Catch landed (kg)	Catch (number)	Catch and released	Catch landed (number)	Catch landed (kg)
Reykjanes	253	56	197	211	0	0	0	0
Vesturland	2324	340	1984	2051	740	71	669	571
Vestfirðir	177	71	106	77	1277	89	1188	779
Norðurland vestra	4649	891	3758	4309	5483	393	5090	4911
Norðurland eystra	9607	5106	4501	5489	2336	187	2149	1960
Austurland	834	334	500	457	2552	2042	510	2244
Suðurland	15146	2010	13136	15560	12160	468	11692	5665
Total	32990	8808	24182	28154	24548	3250	21298	16130

Table 5. The salmon catch in Iceland 1974-2014 in numbers of fish. Total rod catch, rod catch landed, catch and release, catch in rivers with rod catch based mainly on smolt releases, net catch, harvest in Ocean ranching and total catch of salmon as well as the percentage of released fish.

Year	Rod catch	Catch landed	Catch and release	Catch and release total (%)	Ranched rod catch	Catch and release Ranched rod	Catch landed Ranched rod	Rod catch wild salmon number	Rod catch landed Wild salmon	Catch and release Wild salmon	Catch and release Wild (%)	Net catch landed	Rod and net catch landed	Rod and net catch wild lande	Ocean ranched harvest	Total catch	Percentage Ranched in rod fishery
1974	34107	34107			29		29	34078	34078			18044	52151	52122	3765	55916	0,1
1975	45882	45882			57		57	45825	45825			20402	66284	66227	7720	74004	0,1
1976	39249	39249			95		95	39154	39154			17130	56379	56284	3247	59626	0,2
1977	41302	41302			46		46	41256	41256			20864	62166	62120	2405	64571	0,1
1978	52679	52679			82		82	52597	52597			25946	78625	78543	1953	80578	0,2
1979	43955	43955			98		98	43857	43857			18306	62261	62163	1967	64228	0,2
1980	30007	30007			65		65	29942	29942			18992	48999	48934	3138	52137	0,2
1981	27777	27777			80		80	27697	27697			14478	42255	42175	4626	46881	0,3
1982	24671	24671			65		65	24606	24606			11107	35778	35713	5340	41118	0,3
1983	29267	29267			22		22	29245	29245			17761	47028	47006	11194	58222	0,1
1984	23582	23582			10		10	23572	23572			10912	34494	34484	6595	41089	0,0
1985	31621	31621			17		17	31604	31604			14942	46563	46546	19750	66313	0,1
1986	46671	46671			78		78	46593	46593			20437	67108	67030	24100	91208	0,2
1987	33907	33907			32		32	33875	33875			13960	47867	47835	14140	62007	0,1
1988	47979	47979			53		53	47926	47926			18781	66760	66707	64017	130777	0,1
1989	30082	30082			80		80	30002	30002			11738	41820	41740	48617	90437	0,3
1990	29443	29443			1622		1622	27821	27821			12339	41782	40160	90726	132508	5,5
1991	31492	31492			453		453	31039	31039			10454	41946	41493	133203	175149	1,4
1992	42309	42309			521		521	41788	41788			12062	54371	53850	140763	195134	1,2
1993	39025	39025			1041		1041	37984	37984			10197	49222	48181	168427	217649	2,7
1994	28042	28042			1576		1576	26466	26466			11846	39888	38312	89225	129113	5,6
1995	34241	34241			1523		1523	32718	32718			13185	47426	45903	88527	135953	4,4
1996	29436	28767	669	2,3	1298	0	1298	28138	27469	669	2,4	8668	37435	36137	84365	121800	4,4
1997	28640	27082	1558	5,4	2960	5	2955	25680	24127	1553	6,0	5735	32817	29862	15248	48065	10,3
1998	40286	37460	2826	7,0	3848	16	3832	36438	33628	2810	7,7	5939	43399	39567	11223	54622	9,6
1999	31438	28383	3055	9,7	2536	2	2534	28902	25849	3053	10,6	6657	35040	32506	9648	44688	8,1
2000	27257	24339	2918	10,7	3744	24	3720	23513	20619	2894	12,3	4170	28509	24789	375	28884	13,7
2001	29943	26332	3611	12,1	5466	25	5441	24477	20891	3586	14,7	3043	29375	23934	0	29375	18,3
2002	33767	27782	5985	17,7	1791	31	1760	31976	26022	5954	18,6	4583	32365	30605	0	32365	5,3
2003	34111	28750	5361	15,7	3443	165	3278	30668	25472	5196	16,9	7582	36332	33054	0	36332	10,1
2004	45831	38469	7362	16,1	6285	165	6120	39546	32349	7197	18,2	6742	45211	39091	0	45211	13,7
2005	55168	45944	9224	16,7	7413	228	7185	47755	38759	8996	18,8	7560	53504	46319	0	53504	13,4
2006	45545	36810	8735	19,2	6977	92	6885	38568	29925	8643	22,4	5953	42763	35878	0	42763	15,3
2007	53703	44012	9691	18,0	15053	432	14621	38650	29391	9259	24,0	6826	50838	36217	0	50838	28,0
2008	84124	66946	17178	20,4	29288	2469	26799	54856	40147	14709	26,8	9403	76349	49550	0	76349	34,8
2009	74408	56894	17514	23,5	18884	925	17959	55524	38935	16589	29,9	9607	66501	48542	0	66501	25,4
2010	74961	53485	21476	28,6	17911	1231	16680	57050	36805	20245	35,5	15903	69388	52708	0	69388	23,9
2011	55706	38867	16839	30,2	13417	1372	12045	42289	26822	15467	36,6	8729	47596	35551	0	47596	24,1
2012	34786	25034	9752	28,0	9244	310	8934	25542	16100	9442	37,0	3759	28793	19859	0	28793	26,6
2013	68042	44909	23133	34,0	12009	203	11806	56033	33103	22930	40,9	11583	56492	44686	0	56492	17,6
2014	33598	19982	13616	40,5	6753	586	6167	26845	13815	13030	48,5	3663	23645	17478	0	23645	20,1
Average																	
1974-2014	40848	36336	9500	19	4398	436	4191	36450	32145	9064	23	11549	47884	43693	26263	74148	
1974-2013	40861	36689	9272	18	4230	428	4037	36631	32651	8844	21	11908	48597	44560	26358	74955	
2004-2013	59227	45137	14090	23	13646	743	12903	45581	32234	13348	29	8607	53744	40840	0	53744	

Table 6. Top 10 lists of salmon rivers in 2014 including catch landed and catch and released and for catch landed only.

No	River	Catch Number ¹	No	River	Catch landed (Number)
1	Ytri-Rangá og Hólsá vesturbakki	3070	1	Ytri-Rangá og Hólsá vesturbakki	2652
2	Eystri-Rangá	2529	2	Eystri-Rangá	2416
3	Blanda og Svartá	2225	3	Blanda og Svartá	1888
4	Miðfjarðará	1692	4	Norðurá	608
5	Þverá og Kjarrá	1177	5	Langá	502
6	Laxá á Ásum	1005	6	Þverá og Kjarrá	471
7	Selá í Vopnafirði	994	7	Hvítá í Borgarfirði	460
8	Norðurá	924	8	Hítará	425
9	Stóra-Laxá	882	9	Ellidáár	390
10	Vatnsdalsá	833	10	Afall, A-Landeyjum	382

includes catcha and release

Table 7. Top 10 list of river or lakes with brown trout in 2014 including both migratory and stationary fish stocks.

No	River or Lake	Brown trout catch ¹ (Number)
1	Veiðivötn	7200
2	Laxá í Þing o. Brúa	4089
3	Vatnsdalsá	1805
4	Kvíslaveitur	1593
5	Litlaá	1480
6	Reykjadalsá og Eyvindarl.	1122
7	Arnarvatn-Stóra og Austurá	900
8	Hróarsholtslækur	792
9	Hvítá í Borgarfirði	789
10	Ölfusá	748

includes catcha and release

Table 8. Top 10 list of river or lakes with Arctic charr in 2014 including both migratory and stationary fish stocks.

No	River or Lake	Arctic Charr catch ¹ (Number)
1	Veiðivötn	9561
2	Víðidalsá og Fitjá	1447
3	Skjálftavatn	1198
4	Fljótaá	1147
5	Norðfjarðará	940
6	Brúará og Hagaós	792
7	Flókadalsá neðri	789
8	Hlíðarvatn	763
9	Vatnsdalsá	704
10	Gljúfurá	669

includes catcha and release

Table 9. Number and weight in the rod catch in Reykjanes 2014. Total catch, catch landed, mean weight, grilse/salmon ratio of Atlantic salmon, brown trout, and Arctic charr (MW = mean weight (kg)).

River	Salmon					Grilse (1SW)					Salmon (2SW)					Brown trout					Arctic charr						
	Catch	Released	Catch landed	Weight landed	MW	Catch	Landed	Released	% Released	MW	Catch	Landed	Released	% Released	MW	Catch	Landed	Released	% Released	Weight Landed	MW	Catch	Landed	Released	% Released	Weight Landed	MW
Elliðaár	457	67	390	819	2,1	446	381	65	14,6	2,0	11	9	2	18,2	4,7	3	3	0	0,0	4	1,3	0	0	0	0,0	0	0,0
Elliðavatn *													0														
Úlfarsá (Korpa)	163	27	136	231	1,7	157	131	26	16,6	1,6	6	5	1	16,7	4,7	33	25	8	24,2	35	1,4	0	0	0	0,0	0	0,0
Leirvogsa	313	7	306	618	2,0	299	293	6	2,0	1,9	14	13	1	7,1	5,1	82	73	9	11,0	0		0	0	0	0,0	0	0,0
Blikdalsá	16	0	16	38	2,4	14	14	0	0,0	2,2	2	2	0	0,0	5,0	0	0	0	0,0	0	0,0	0	0	0	0,0	0	0,0
Kiðafellsá *				0				0					0														
Laxá í Kjós	472	243	229	550	2,4	395	215	180	45,6	2,2	77	14	63	81,8	4,8	77	38	39	50,6	100	2,6	0	0	0	0,0	0	0,0
Bugða	133	125	8	17	2,1	116	8	108	93,1	2,1	17	0	17	100,0	4,8	2	2	0	0,0	5	2,6	0	0	0	0,0	0	0,0
Meðalfellsva *				0				0					0														
Brynjudalsá #	118	10	108	227	2,1	112	102	10	8,9	2,0	6	6	0	0,0	4,8	40	40	0	0	2	1,2	0	0	0	0,0	0	0,0
Botnsá	112	9	103	203	2,0	106	98	8	7,5	1,8	6	5	1	16,7	5,3	16	16	0	0	20	1,2	0	0	0	0,0	0	0,0
Djúpavatn *				0																							
Reykjanes samtals:	1784	488	1296	2702		1645	1242	403	24,5	0,0	139	54	85	61,2	0,0	253	197	56	28,4	165	0	0	0	0,0	0	0,0	

* no records

Table 10. Number and weight in the rod catch in Vesturland 2014. Total catch, catch landed, mean weight, grilse/salmon ratio of Atlantic salmon, brown trout, and Arctic charr (MW = mean weight (kg)).

River	Salmon					Grilse (1SW)					Salmon (2SW)					Brown trout					Arctic charr							
	Catch	Released	Catch landed	Weight landed	MW	Catch	Landed	Released	Released	%	MW	Catch	Landed	Released	Released	MW	Catch	Landed	Released	Released	Weight Landed	MW	Catch	Landed	Released	Released	Weight Landed	
Vötn í Svínadal *																												
Selós og Þverá	31	0	31	61	2,0	31	31	0	0,0	2,0	0	0	0	0,0	0,0	87	82	5	5,7	110	1,3	1	1	0	0,0	2		
Laxá í Leirársveit	405	82	323	717	2,2	365	302	63	17,3	2,1	40	21	19	47,5	4,9	172	160	12	7,0	219	1,4	8	7	1	12,5	9		
Leirá í Leirársveit	14	0	14	31	2,2	13	13	0	0,0	2,1	1	1	0	0,0	3,5	28	22	6	21,4	26	1,2	0	0	0	0,0	0		
Hafnará *																												
Hvítá efri hluti	7	0	7	18	2,6	6	6	0	0,0	1,9	1	1	0	0,0	4,7	0	0	0	0,0	0	0,0	8	8	0	0,0	7		
Hvítá í Borg, neðrihl.	30	0	30	77	2,6	26	26	0	0,0	1,9	4	4	0	0,0	4,7	20	20	0	0,0	20	1,0	2	2	0	0,0	4		
Hvítá í Borgarfirði &	443	15	428	1070	2,5	382	372	10	2,6	1,9	61	56	5	8,2	4,7	769	754	15	2,0	656	0,9	5	5	0	0,0	8		
Gufuá	54	0	54	97	1,8	50	50	0	0,0	1,6	4	4	0	0,0	4,9	31	30	1	3,2	29	1,0	0	0	0	0,0	0		
Seleyri	0	0	0	0	0,0	0	0	0	0,0	0,0	0	0	0	0,0	0,0	20	20	0	0,0	20	1,0	0	0	0	0,0	0		
Andakilsá	111	9	102	230	2,3	97	94	3	3,1	2,0	14	8	6	42,9	4,7	4	4	0	0,0	3	0,8	20	20	0	0,0	10		
Grímsá og Tunguá	530	286	244	522	2,1	431	233	198	45,9	2,2	99	11	88	88,9	5,4	29	23	6	20,7	32	1,4	1	1	0	0,0	1		
Flókadalsá	343	20	323	572	1,8	337	317	20	5,9	1,7	6	6	0	0,0	4,1	5	4	1	20,0	5	1,2	0	0	0	0,0	0		
Reykjadalsá	155	1	154	360	2,3	137	136	1	0,7	2,0	18	18	0	0,0	4,8	19	18	1	5,3	23	1,3	0	0	0	0,0	0		
Þverá og Kjará	1177	706	471	1102	2,3	705	442	263	37,3	2,2	472	29	443	93,9	4,8	56	53	3	5,4	72	1,4	0	0	0	0,0	0		
Litla-Þverá	18	5	13	33	2,5	16	13	3	18,8	2,2	2	0	2	100,0	5,4	2	2	0	0,0	3	1,5	0	0	0	0,0	0		
Norðurá	924	316	608	1313	2,2	672	588	84	12,5	2,1	252	20	232	92,1	4,5	65	58	7	10,8	81	1,4	5	5	0	0,0	8		
Norðlingafljót	315	40	275	633	2,3	258	225	33	12,8	2,0	57	50	7	12,3	4,5	0	0	0	0,0	0	0,0	0	0	0	0,0	0		
Gljúfurá	167	1	166	332	2,0	158	157	1	0,6	1,9	9	9	0	0,0	4,6	34	34	0	0,0	41	1,2	0	0	0	0,0	0		
Langá	595	93	502	994	2,0	542	469	73	13,5	1,9	53	33	20	37,7	4,6	1	1	0	0,0	1	1,0	9	9	0	0,0	12		
Urriðará	30	0	30	55	1,8	27	27	0	0,0	1,5	3	3	0	0,0	4,3	107	106	1	0,9	91	0,9	3	3	0	0,0	2		
Álftá og Veita	109	5	104	259	2,5	80	80	0	0,0	2,0	29	24	5	17,2	4,2	169	166	3	1,8	161	1,0	0	0	0	0,0	0		
Hítará	477	52	425	935	2,2	411	394	17	4,1	2,0	66	31	35	53,0	4,7	13	12	1	7,7	14	1,2	6	6	0	0,0	8		
Haffjarðará	821	631	190	471	2,5	597	168	429	71,9	2,2	224	22	202	90,2	5,3	254	116	138	54,3	128	1,1	34	10	24	70,6	13		
Hlíðarvatn	1	0	1	5	5,0	0	0	0	0,0	0,0	1	1	0	0,0	5,0	113	113	0	0,0	64	0,6	24	24	0	0,0	12		
Núpá í Eyjahreppi #																												
Laxá í Miklaholtshr. *																												
Straumfjarðará	310	73	237	531	2,2	269	230	39	14,5	2,2	41	7	34	82,9	5,5	0	0	0	0,0	0	0,0	0	0	0	0,0	0		
Vatnasvæði Lýsu	2	0	2	4	2,1	2	2	0	0,0	2,1	0	0	0	0,0	0,0	40	40	0	0,0	31	0,8	2	2	0	0,0	2		

Table 10 (continued). Number and weight in the rod catch in Vesturland 2014. Total catch, catch landed, mean weight, grilse/salmon ratio of Atlantic salmon, brown and Arctic charr (MW = mean weight (kg)).

Ríver	Salmon					Grilse (1SW)					Salmon (2SW)					Brown trout					Arctic charr				
	Catch	Released	Catch landed	Weight landed	MW	Catch	Landed	Released	% Released	MW	Catch	Landed	Released	% Released	MW	Catch	Landed	Released	% Released	Weight Landed	MW	Catch	Landed	Released	% Released
Staðará *																									
Grishólsá og Bakká	67	38	29	60	2,1	60	29	31	48,3	2,1	7	0	7	0,0	5,8	171	63	108	36,8	108	2,5	95	73	22	23,2
Örlygsstaðaá-Kársst.*			0										0												
Fróðá	102	60	42	97	2,3	88	42	46	52,3	1,9	14	0	14	100,0	5,0	5	5	0	0,0	6	1,2	7	7	0	0,0
Valshamarsá *			0	0																					
Setbergsá *			0	0																					
Stóra-Langadalsá #																									
Laxá á Skógarströnd	95	4	91	162	1,8	93	89	4	4,3	1,7	2	2	0	0,0	4,4	1	1	0	0,0	1	0,5	1	1	0	0
Svínafossá	34	29	5	10	1,9	34	5	29	85,3	1,9	0	0	0	0,0		34	5	29	85,3	3	0,7	0	0	0	0
Dunká	47	14	33	69	2,1	41	32	9	22,0	1,8	6	1	5	83,3	4,3	0	0	0	0,0	0	0,0	0	0	0	0
Hörðudalsá	34	1	33	80	2,4	29	28	1	3,4	2,0	5	5	0	0,0	5,0	0	0	0	0,0	0	0,0	118	113	5	4,2
Skrauma #																									
Miðá og Tunguá	225	0	225	614	2,7	166	166	0	0,0	2,0	59	59	0	0,0	4,7	0	0	0	0,0	0	0,0	77	77	0	0
Haukadalsá neðri	194	79	115	253	2,2	117	111	6	5,1	2,2	77	4	73	94,8	5,3	0	0	0	0,0	0	0,0	1	1	0	0
Haukadalsá efri *																									
Laxá í Dölum	216	109	107	242	2,3	175	103	72	41,1	2,1	41	4	37	90,2	6,3	5	5	0	0,0	6	1,3	4	3	1	25,0
Ljá *																									
Ljárskógarvötn *																									
Fáskrúð	81	2	79	192	2,4	63	62	1	1,6	1,8	18	17	1	5,6	4,7	1	1	0	0,0	1	1,0	0	0	0	0
Glerá *	25	0	25	53	2,1	22	22	0	0,0	1,8	3	3	0	0,0	4,4	0	0	0	0,0	0	0,0	0	0	0	0
Laxá í Hvammsveit	36	1	35	58	1,7	34	33	1	2,9	1,5	2	2	0	0,0	3,8			0	0,0	0		3	3	0	0
Flekkudalsá §	78	0	78	187	2,4	71	71	0	0,0	1,8	7	7	0	0,0	4,7	0	0	0	0,0	0	0,0	0	0	0	0
Krossá	123	16	107	205	1,9	111	103	8	7,2	1,9	12	4	8	66,7	4,1	65	63	2	3,1	46	0,7	31	31	0	0,0
Búðardalsá	246	26	220	568	2,6	199	183	16	8,0	2,1	47	37	10	21,3	4,7	2	2	0	0,0	2	1,0	6	5	1	16,7
Staðarhólsá og Hvolsá	120	11	109	254	2,3	104	96	8	7,7	1,9	16	13	3	18,8	5,4	2	1	1	0,0	1	0,6	269	252	17	6,3
Vesturland samtals:	8792	2725	6067	13525	2,2	7019	5550	1469	20,9		1773	517	1256	70,8		2324	1984	340	14,6	2002	1,0	740	669	71	9,6

* no records

& Hvítá í Borgarfirði, combined for: Brenna, Svarthöfði, Straumar, Skuggi, Ferjukot-Norðurkot.

River closed for all fishery

§ Numbers for withgt and 1SW and 2 SW are estimated.

Table 11. Number and weight in the rod catch in Vestfirðir 2014. Total catch, catch landed, mean weight, grilse/salmon ratio of Atlantic salmon, brown trout, and Arctic charr (MW = mean weight (kg)).

River	Salmon					Grilse (1SW)					Salmon (2SW)					Brown trout					Arctic charr						
	Catch	Released	Catch landed	Weight landed	MW	Catch	Landed	Released	% Released	MW	Catch	Landed	Released	% Released	MW	Catch	Landed	Released	% Released	Weight Landed	MW	Catch	Landed	Released	% Released	Weight Landed	MW
Gufudalsá	18	0	18	31	1,7	18	18	0	0,0	1,7	0	0	0	0,0	0,0	10	10	0	0	5	0,5	622	563	59	9,5	259	0,5
Porskafljarðará	51	16	35	89	2,6	38	30	8	21,1	2,2	13	5	8	61,5	4,8	14	13	1	7,7	8	0,6	49	43	6	12,2	43	1,0
Vatnsdalsá í Vatnsfirði *																											
Fjarðarhornsá	98	8	90	239	2,7	77	69	8	10,4	2,1	21	21	0	0,0	4,6	6	5	1	0	8	1,5	89	86	3	3,4	42	0,5
Skálmardalsá	2	0	2	4	2,2	2	2	0	0,0	2,2	0	0	0	0,0	0,0	6	4	0	0	0	0,9	289	276	13	4,5	152	0,6
Mórudalsá *																											
Suðurfossá	29	1	28	69	1,9	27	27	0	0,0	1,8	2	1	1	50,0	5,0	1	1	0	0,0	1	1,0	0	0	0	0,0	0	0,0
Staðará í Súgandafirði	65	43	22	77	3,5	37	19	18	48,6	1,7	28	3	25	89,3	6,2	1	1	0	0	1	1,0	3	3	0	0,0	3	1,0
Fljótavík																						66	66	0	0,0	28	0,4
Heydalsá *																											
Fossá í Skutulsfirði *																											
Langadalsá	158	81	77	187	2,4	77	67	10	13,0	2,2	81	10	71	87,7	4,1	0	0	0	0,0	0	0,0	7	4	3	42,9	11	2,8
Ísafjarðará	48	2	46	115	2,5	45	43	2	4,4	2,4	3	3	0	0,0	3,7	0	0	0	0,0	0	0,0	6	6	0	0,0	5	0,8
Laugardalsá	138	58	80	194	2,4	108	75	33	30,6	2,3	30	5	7	23,3	4,8	132	65	67	0,0	48	0,7	1	1	0	0,0	1	1,0
Laugardalsvatn *				0																							
Hvannadalsá	68	7	61	201	3,3	38	37	1	2,6	2,8	30	24	6	20,0	5,1	0	0	0	0	0	0,0	2	2	0	0,0	1	0,7
Selá í Ísafjarðardjúpi	4	0	4	14	3,4	4	4	0	0,0	2,6	0	0	0	0,0	0,0	0	0	0	0	0	0,0	13	13	0	0,0	13	1,0
Bjarnarfjarðará																											
Hvalsá	18	6	12	36	3,0	13	10	3	23,1	2,6	5	2	0	0,0	5,3							3	3	0	1,0	3	0,9
Selá í Steingrímsf.	11	1	10	40	4,0	3	3	0	0,0	1,8	3	7	-4	-133,3	5,8	0	0	0	0	0	0,0	46	46	0	0,0	51	1,1
Staðará í Steing. *																											
Miðdalsá	14	1	13	39	3,0	9	9	0	0,0	2,1	5	4	1	20,0	5,1	0	0	0	0	0	0,0	63	58	5	7,9	47	0,8
Víðdalsá, Þverá, Húsad. *																											
Hrófá *																											
Prestbakkaá	45	0	45	118	2,6	37	37	0	0,0	2,1	8	8	0	0,0	5,2	0	0	0	0	0	0,0	0	0	0	0,0	0	0,0
Krossá	43	5	38	116	3,1	32	30	2	6,3	2,3	11	8	3	27,3	5,9	3	3	0	0	2	0,6	2	2	0	0,0	2	1,0
Víkurá	73	3	70	217	3,1	49	48	1	2,0	2,2	24	22	2	8,3	5,1	0	0	0	0	0	0,0	14	14	0	0,0	10	0,7
Laxá í Hrútafirði	31	9	22	56	2,6	24	18	6	25,0	2,3	7	4	3	42,9	5,1	4	4	0	0	1	0,2	2	2	0	0,0	1	0,4
Vestfirðir Total	914	241	673	1844	2,7	638	546	92	14,4		271	127	144	53,1		177	106	71	67,0	74	0,7	1277	1188	89	7,0	671	0,56

* no records

Table 12. Number and weight in the rod catch in Norðurlandi vestra 2014. Total catch, catch landed, mean weight, grilse/salmon ratio of Atlantic salmon, brown trout, and Arctic charr (MW = mean weight (kg)).

River	Salmon					Grilse (1SW)					Salmon (2SW)					Brown trout					Arctic charr						
	Catch	Released	Catch landed	Weight landed	MW	Catch	Landed	Released	% Released	MW	Catch	Landed	Released	% Released	MW	Catch	Landed	Released	% Released	Weight Landed	MW	Catch	Landed	Released	% Released	Weight Landed	MW
Hrútafjarðará og Síká	274	138	136	378	2,8	150	116	34	22,7	2,4	124	20	104	83,9	5,0	3	1	2	66,7	1	0,6	36	31	5	13,9	43,4	1,4
Tjarnará *								0																			
Hamarsá	8	0	8	14	1,8	8	8	0	0,0	1,8	0	0	0	0,0	0,0	0	0	0	0,0	0	0,0	8	8	0	0,0	4	0,6
Miðfjarðará	1692	1530	162	436	2,7	995	151	844	84,8	2,5	697	11	686	98,4	6,1	0	0	0	0,0	0	0,0	0	0	0	0,0	0	0,0
Amarv.-Stóra og Austurá																900	766	134	14,9	858	1,1	141	135	6	4,3	136	1,0
Viðdalsá og Fitjá	696	512	184	517	2,8	351	177	174	49,6	2,7	345	7	338	98,0	5,3	205	193	12	5,9	326	1,7	1447	1385	62	4,3	1717	1,2
Vatnsdalsá	833	703	130	490	3,8	425	85	340	80,0	2,7	408	45	363	89,0	5,8	1805	1755	50	2,8	1948	1,1	704	672	32	4,5	746	1,1
Citjá %				0				0																			
Gjúfurá	69	69	0	0	0,0	59	0	59	100,0	0,0	10	0	10	100,0	0,0	21	20	1	4,8	35	1,8	669	657	12	1,8	486	0,7
Laxá á Ásum	1005	796	209	550	2,6	934	203	731	78,3	2,6	71	6	65	91,5	4,8	92	73	19	20,7	129	1,8	78	72	6	7,7	81	1,1
Fremri Laxá á Ásum *																											
Blanda	1933	207	1726	6145	3,6	1164	1060	104	8,9	2,4	769	666	103	13,4	5,4	51	51	0	0,0	84	1,7	21	21	0	0,0	26	1,2
Svartá	292	130	162	454	2,8	177	140	37	20,9	2,4	115	22	93	80,9	5,2	10	10	0	0,0	16	1,6	1	1	0	0,0	1	1,0
Langavatn á Refas. *																											
Seyðisá *																											
Blöndulón *																											
Laxá á Refasveit *																											
Hallá	103	9	94	278	3,0	68	67	1	1,5	2,2	35	27	8	22,9	4,9	8	7		0,0	6	0,9	0	0	0	0,0	0	0,0
Laxá í Nesjum	18	0	18	41	2,3	18	18	0	0,0	2,3	0	0	0	0,0	0,0	0	0	0	0,0	0	0,0	0	0	0	0,0	0	0,0
Fossá á Skaga	65	0	65	280	4,3	25	25	0	0,0	2,2	40	40	0	0,0	5,6	0	0	0	0,0	0	0,0	1	1	0	0,0	1	0,5
Laxá á Skaga #								0																			
Svartá o. Reykjafoss																129	129	0	0,0	0	1,0						
Húseyjarkvísl	281	273	8	51	6,4	117	2	115	98,3	2,6	164	6	158	96,3	7,0	733	67	666	90,9	164	2,5	9	2	7	77,8	2	1,0
Sæmundará	171	44	127	382	3,0	112	107	5	4,5	2,6	59	20	39	66,1	5,1	77	75	2	2,6	95	1,3	104	83	21	20,2	64	0,8
Norðurá í Skagafirði *																											
Héraðsvötn *																											
Hofsá Vesturdal *																											
Hjaltadalsá og Kolka	31	1	30	113	3,8	17	17	0		2,6	14	13	1	7,1	5,3	36	36	0	0,0	55	1,5	130	130	0	0,0	130	1,0
Hofsá, Unadalsá																45	43	2	4,4	0		1	1	0	0,0	1	1,1
Grafará *																											
Hrollleifsdalsá	10	0	10	36	3,6	6	6	0	0,0	2,3	4	4	0	0,0	5,6	53	52	1	1,9	38	0,7	197	180	17	8,6	103	0,6
Flókadalsá efri *																											
Flókadalsá neðri	18	0	18	61	3,4	14	14	0	0,0	2,4	4	4	0	0,0	6,9	479	478	1	0,2	421	0,9	789	776	13	1,6	481	0,6
Fljótaá	138	118	20	46	2,3	76	16	60	78,9	2,3	62	4	58	93,5	5,9	2	2	0	0,0	5	2,3	1147	935	212	18,5	888	1,0
Norðurland vestra Total	7637	4530	3107	10272	3,3	4716	2212	2504	53,1		2921	895	2026	69,4		4649	3758	891	19,2	4180	1,1	5483	5090	393	7,2	4910,85	0,96

* no records

% Recorded with River Vatnsdalsá

Table 13. Number and weight in the rod catch in Norðurlandi eystra 2014. Total catch, catch landed, mean weight, grilse/salmon ratio of Atlantic salmon, brown trout, and Arctic charr (MW = mean weight (kg)).

River	Salmon					Grilse (ISW)					Salmon (2SW)					Brown trout					Arctic charr						
	Catch	Released	Catch landed	Weight landed	MW	Catch	Landed	Released	Released	MW	Catch	Landed	Released	Released	MW	Catch	Landed	Released	Released	Weight Landed	MW	Catch	Landed	Released	Released	Weight Landed	MW
Fjarðará í Siglufirði *																											
Ólafsfjarðará *																											
Svarfaðardalsá																149	144	5	3,4	122	0,9	632	601	31	4,9	517	0,9
Héðinsfjarðará																						311	269	42	13,5	1,2	
Héðinsfjarðarvatn																						133	133	0	0,0	1,2	
Dorvaldsdalsá *																											
Hörgá																185	153	32	17,3	113	0,7	536	466	70	0,0	452	1,0
Eyrafjarðará	2	1	1	7	7,0	0	0	0	0,0	0,0	2	1	1	50,0	7,0	236	129	107	45,3	179	1,4	449	140	309	68,8	172	1,2
Fnjóská	291	48	243	1140	4,7	75	62	13	82,7	2,3	216	181	35	83,8	5,5	141	137	4	2,8	138	1,0	366	314	52	14,2	411	1,3
Bakkaá í Fnjóskadal *																											
Fnjóská Bleikjasmýrardal																38	37	1	2,6	40	1,1	30	19	11	36,7	18	0,9
Fjarðará í Hvalvatnsf.																0	0	0	0,0	0	0,0	96	95	1	1,0	78	0,8
Diúpá	10	1	9	28	3,2	6	6	0	100,0	2,3	4	3	1	75,0	4,9	4	4	0	0,0	5	1,3	0	0	0	0,0	0	0,0
Skjálfandafljót A-deild	150	2	148	628	4,2	55	55	0	100,0	2,2	95	93	2	97,9	5,5	13	12	1	7,7	11	0,9	13	12	1	0,0	8	0,7
Skjálfandafljót B-deild	102	27	75	303	4,0	49	39	10	79,6	3,0	53	36	17	67,9	5,2			0	0,0	0				0	0,0	0	
Laxá í Aðaldal	829	743	86	487	5,7	182	22	160	12,1	2,6	647	64	583	9,9	6,7	732	490	242	33,1	568	1,2	0	0	0	0,0	0	0,0
Laxá í Þing o. Brúa																4089	2507	1582	38,7	3485	1,4	12	4	8	66,7	6	1,6
Amarvatnsá og Helluvaðsá																293	9	284	96,9	10	1,1	0	0	0	0,0	0	0,0
Kráká *																											
Gautlandalækur #																											
Reykjadalssá, Eyvindarl.	41	21	20	84	4,2	27	13	14	48,1	2,4	14	7	7	50,0	7,3	1122	257	865	77,1	182	0,7	0	0	0	0,0	0	0,0
Mýrarkvísl	97	92	5	18	3,6	51	2	49	3,9	2,1	46	3	43	6,5	4,7	537	274	263	0,0	318	1,2	1	1	0	0,0	1	1,0
Litlaá	7	4	3	13	4,3	4	1	3	25,0	1,9	3	2	1	66,7	7,0	1480	11	1469	99,3	17	1,5	163	2	161	0,0	2	1,0
Skjálfavatn																101	6	95	94,1	9	1,5	1198	40	1158	96,7	40	1,0
Brunná	2	2	0	0	2,1	2	0	2	0,0	2,1	0	0	0	0,0	0,0	139	8	131	94,2	1		284	32	252	88,7	32	1,0
Deildará	183	8	175	473	2,7	144	143	1	99,3	2,2	39	32	7	82,1	4,8	147	147	0	0,0	84	0,6	31	31	0	0,0	19	0,6
Ormarsá	500	393	107	369	3,5	176	72	104	40,9	2,4	324	35	289	10,8	5,6	160	140	20	12,5	154	1,1	137	116	21	15,3	133	1,2
Svalbarðsá	402	381	21	66	3,1	138	11	127	8,0	2,2	264	10	254	3,8	4,6	4	2	50,0	2	1,0	14	2	12	85,7	2	1,0	
Sandá	447	372	75	287	3,8	153	46	107	30,1	2,6	294	29	265	9,9	5,8	2	2	0	0,0	2	1,0	2	2	0	0,0	2	1,0
Hafralónsá	280	204	76	239	3,2	118	51	67	43,2	2,2	162	25	137	15,4	5,2	32	29	3	9,4	45	1,5	71	51	20	28,2	57	1,1
Kverká	24	18	6	26	4,4	10	3	7	30,0	2,4	14	3	11	21,4	5,0	2	2	0	0,0	2	1,0	0	0	0	0,0	0	
Hölkna	81	34	47	137	2,9	41	35	6	85,4	2,3	40	12	28	30,0	4,8	1	1	0	0,0	2	2,0	6	6	0	0,0	9	1,5
Bakkaá (v.f. Sandvíkur) *																											
Lónsá og Sauðnesá *			0	0				0	0,0				0	0,0				0	0,0					0	0,0		0
Norðurland eystra Total	3448	2351	1097	4304	3,9	1231	561	670	54,4		2217	536	1681	75,8		9607	4501	5106	53,1	5490	1,2	4485	2336	2149	47,9	1962	0,8

* No records

Table 14. Number and weight in the rod catch in Austurland 2014. Total catch, catch landed, mean weight, grilse/salmon ratio of Atlantic salmon, brown trout, and Arctic charr (MW = mean weight (kg)).

River	Salmon					Grilse (1SW)					Salmon (2SW)					Brown trout					Arctic charr							
	Catch	Released	Catch landed	Weight landed	MW	Catch	Landed	Released	Released	MW	Catch	Landed	Released	Released	MW	Catch	Land	Released	Released	Weight Landed	MW	Catch	Landed	Released	Released	Weight Landed	MW	
Mjöfjarða og Kverká	132	77	55	152	2,8	86	51	35	41	2,7	46	4	42	91	4,0	1	1	0	0	0	0	0	0	0	0	0	0	0,0
Hölná í Bakkaf	21	19	2	10	4,9	16	0	16	100,0	2,2	5	2	3	60	4,9	1	1	0	0,0	0	1,0	1	1	0	0,0	1	1,0	
Selá í Vopnafirði	994	797	197	658	3,3	440	137	303	68,9	2,5	554	60	494	89	5,2	18	7	11	61,1	10	1,4	12	8	4	33,3	8	1,0	
Vesturdalsá	139	79	60	132	2,2	96	56	40	41,7	2,0	43	4	39	91	5,2	0	0	0	0,0	0	0,0	327	306	21	6,4	239	0,8	
Hofsá	590	460	130	387	3,0	212	97	115	54,2	2,3	378	33	345	91	5,0	66	62	4	6,1	64	1,0	306	294	12	3,9	273	0,9	
Sunnudalsá	64	60	4	15	3,7	31	2	29	93,5	2,4	33	2	31	94	9,9	5	1	4	80,0	1	1,4	2	2	0	0,0	3	1,6	
Fögruhlóðará	34	14	20	61	3,1	19	14	5	26,3	1,9	15	6	9	60	5,8	88	59	29	33,0	74	1,3	182	96	86	47,3	101	1,1	
Vatnasv. Jökulsár á Dal	272	138	134	421	3,1	147	91	56	38,1	2,1	125	43	82	66	5,2	19	18	1	5,3	17	0,9	190	151	39	20,5	171	1,1	
Gilsá og Selfljót	32	1	31	87	2,8	25	25	0	0,0	2,4	7	6	1	14	4,3	124	117	7	5,6	105	0,9	149	146	3	2,0	153	1,1	
Eyvindará *																												
Kelduá *																												
Grímsá á Fljótisdalshérði *																												
Fjarðará, Borgarf.-Eystra *																												
Fjarðará, Seyðisfirði	7	0	7	13	1,8	7	7	0	0,0	1,8	0	0	0	0,0	0	0	0	0,0	0	0,0	471	383	88	18,7	260	0,7		
Norðfjarðará	12	0	12	26	2,2	11	11	0	0,0	2,0	1	1	0	0	5,0	0	0	0	0,0	0	0,0	940	778	162	17,2	700	0,9	
Fjarðará, Loðmundarf. *																												
Sléttuá í Reyðarfirði #																												
Dalsá í Fäskrúðsfirði	4	2	2	5	2,5	3	1	2	66,7	1,8	1	1	0	0	3,5	0	0	0	0,0	0	0,0	139	122	17	12,2	99	0,8	
Breiðdalsá	290	132	158	453	2,9	186	113	73	39,2	1,9	104	45	59	57	5,4	512	234	278	54,3	185	0,8	343	265	78	22,7	236	0,9	
Selá í Álfafirði *																												
Ceithellnaá *																												
Hofitellsá *																												
Laxá í Nesjum *																												
Austurland Total:	2591	1779	812	2420	3,0	1279	605	674	52,7		1312	207	1105	84		834	500	334	40,0	456	0,9	3062	2552	510	16,7	2244	0,9	

* no records

closed for fishery

Table 15. Number and weight in the rod catch in Sudurland 2014. Total catch, catch landed, mean weight, grilse/salmon ratio of Atlantic salmon, brown trout, and Arctic charr (MW = mean weight (kg)).

River	Salmon					Grilse (1SW)					Salmon (2SW)					Brown trout					Arctic charr							
	Catch	Released	landed	Weight landed	MW	Catch	Landed	Released	% Released	MW	Catch	Landed	Released	% Released	MW	Catch	Landed	Released	% Released	Weight Landed	MW	Catch	Landed	Released	% Released	Weight Landed	MW	
Brunná *																												
Laxá, Brúará, Djúpa Eldvatn á Brunas. *																56	52	4	7,1	112	2,2	5	5	0	0,0	6	1,2	
Fossálar																135	128	7	5,2	302	2,4	19	17	2	10,5	14	0,8	
Vatnamót																252	180	72	28,6	259	1,4	2	2	0	0,0	2	1,0	
Hólmasvæði *																												
Geirlandsá	60	2	58	181	3,1	46	44	2	4,3	2,1	14	14	0	0,0	5,4	366	233	133	36,3	746	3,2	1	0	1	100,0	0	0,5	
Skaftá *																												
Hörgsá á Siðu																25	25	0	0,0	75	3,0			0	0,0	0		
Fjaðrá *																												
Víkurflóð *																												
Hæðargarðsvatn *																												
Holtsá *																												
Tungulækur *																												
Grænækur, Jónskv., Sýrl.	1	0	1	2	1,5	1	1	0	0,0	1,5	0	0	0	0,0	0,0	293	270	23	7,8	567	2,1	24	8	16	66,7	19	2,4	
Steinsmýrarvötn *																												
Eyjalón *																												
Eldvatn í Meðallandi	12	1	11	26	2,4	10	10	0	0,0	2,3	2	1	1	50,0	3,6	369	125	244	66,1	240	1,9	12	9	3	25,0	15	1,7	
Tungufljót	45	16	29	72	2,5	38	26	12	31,6	2,3	7	3	4	57,1	4,3	276	133	143	51,8	370	2,8	14	13	1	7,1	15,3	1,2	
Kúðafliót *																												
Skálm *																												
Vatnsá og Kerlingadalsá *																												
Heiðarvatn *																												
Skógaá *																												
Markarfljót, Álur *																												
Afíall, A-Landeyjum	386	4	382	1100	2,9	278	274	4	1,4	2,0	108	108	0	0,0	5,1	100	100	0	0,0	120	1,2	2	2	0	0,0	3	1,3	
Ytri-Rangá, Hólsá Vesturb.	3070	418	2652	6683	2,5	2594	2219	375	14,5	2,0	476	433	43	9,0	5,1	246	60	186	75,6	112	1,9	19	10	9	47,4	13	1,3	
Hólsá - austurbakki	266	0	266	787	3,0	185	185	0	0,0	2,1	81	81	0	0,0	4,9	59	58	1	1,7	132	2,3	1	1	0	0,0	2	2,4	
Eystri-Rangá	2529	113	2416	8166	3,4	1491	1424	67	4,5	2,0	1038	992	46	4,4	5,4	71	60	11	15,5	71	1,2	25	21	4	16,0	32	1,5	
Pverá	165	3	162	457	2,8	121	119	2	1,7	2,0	44	43	1	2,3	5,0	44	44	0	0,0	63	1,4	1	1	0	0,0	1	1,5	
Hróarslækur	22	0	22	62	2,8	14	14	0	0,0	1,8	8	8	0	0	4,6	9	7	2	22,2	16	2,3	6	6	0	0,0	11	1,9	
Minnivallarlækur																331	40	291	87,9	67	1,7	0	0	0	0,0	0	0,0	
Galtlækur																84	3	81	96,4	0	1,4	1	0	1	0,0	0	0,8	

Table 15. (continued). Number and weight in the rod catch in Sudurland 2014. Total catch, catch landed, mean weight, grilse/salmon ratio of Atlantic salmon, brown trout, and Arctic charr (MW = mean weight (kg)).

River	Salmon					Grilse (1SW)					Salmon (2SW)					Brown trout					Arctic charr						
	Catch	Released	Catch landed	Weight landed	MW	Catch	Landed	Released	%	MW	Catch	Landed	Released	%	MW	Catch	Landed	Released	%	Weight Landed	MW	Catch	Landed	Released	%	Weight Landed	MW
Kálfá	172	96	76	203	2,7	106	57	49	46,2	1,9	66	19	47	71,2	4,9	16	16	0	0,0	29	1,8	0	0	0	0,0	0	0,0
Fossá í Þjórsárdal	75	74	1	6	5,9	9	0	9	100,0	2,6	66	1	65	98,5	5,6	350	0	0	0,0	0	0,8	0	0	0	0,0	0	0,0
Sandá í Þjórsárdal *																											
Þverá í Þjórsárdal	12	2	10	21	2,1	11	9	2	18,2	1,7	1	1	0	0	6,0	12	12	0	0,0	9	0,7			0	0,0	0	
Þjórsá	35	0	35	91	2,6	22	22	0	0,0	1,9	13	13	0	0	4,9	59	59	0	0,0	81	1,4	1	1	0	0,0	2	1,5
Kaldakvísl *																											
Kvíslaveitur																1593	1575	18	1,1	992	0,6						
Botnsvatn *																											
Fellendavatn																91	80	11	12,1	118	1,5						
Þórisvatn																287	287	0	0,0	184	0,6						
Sporðöldulón																3	3	0	0,0	1	0,5	1	1	0	0,0	0	0,5
Veðivötn																7200	7200	0	0,0	8856	1,2	9561	9561	0	0,0	3729	0,4
Laugarvatn																23	23	0	0,0	30	1,3	110	110	0	0,0	75	0,7
Hólaá																206	187	19	9,2	127	0,7	354	336	18	5,1	202	0,6
Ápá *																											
Apavatn																349	332	17	4,9	246	0,7	24	13	11	45,8	7	0,5
Ölfusá	145	2	143	412	2,9	105	104	1	1,0	2,0	40	39	1	2,5	5,1	748	746	2	0,3	1	13	13	0	0,0	15	1,2	
Hvítá	294	8	286	1050	3,7	160	158	2	1,3	2,1	134	128	6	4,5	5,6	183	183	0	0,0	236	1,3	3	3	0	0,0	4	1,3
Brúará og Hagaós	26	6	20	56	2,8	20	16	4	20,0	2,0	6	4	2	33,3	6,0	147	134	13	8,8	117	0,9	792	724	68	8,6	659	0,9
Litla-Laxá *																											
Stóra-Laxá	882	680	202	883	4,4	280	82	198	70,7	2,5	602	120	482	80,1	5,7	8	3	5	62,5	6	2,0	46	13	33	71,7	22	1,7
Tungufljót Biskupstungur	22	11	11	29	2,6	13	9	4	30,8	2,3	9	2	7	77,8	4,3	0	0	0	0,0	0	0,0	32	7	25	78,1	11	1,6
Sog	188	63	125	350	2,8	129	91	38	29,5	2,1	59	34	25	42,4	4,7	35	29	6	17,1	39	1,3	180	126	4	2,2	175	1,4
Ásgarðslækur *																				0							
Vammá/Þorleifs lækur	6	3	3	13	4,4	5	2	3	60,0	2,8	1	1	0	0,0	7,9	327	51	276	84,4	119	2,3	129	35	94	72,9	84	2,4
Hróarsholtslækur	19	0	19	53	2,8	14	14	0	0,0	2,2	5	5	0	0,0	4,5	792	697	95	12,0	1115	1,6	19	19	0	0,0	13	0,7
Úlfjótavatn *																											
Þingvallavatn *																											
Hlíðarvatn																1	1	0	0,0	1		763	635	128	16,8	533	0,8
Sudurland Total	8432	1502	6930	20703	3,0	5652	4880	772	13,7		2780	2050	730	26,3		15089	13083	2006	13,3	15445	1,2	11392	11052	340	3,0	5126	0,5

* no records

Table 17 Catch of brown trout in some Icelandic rivers 1987 - 2014. Migratory and stationary stocks are included.

River	Y E A R																								Average	Max	Min				
	1987	1988	1989	1990	1991	1992	1993	1994	1995	1996	1997	1998	1999	2000	2001	2002	2003	2004	2005	2006	2007	2008	2009	2010	2011	2012	2013	2014	catch	catch	catch
Laxá í Leirársveit	157	251	194	219	221	223	180	183	153	157	116	189	239	176	209	406	179	241	97	104	75	46	92	80	53	52	90	172	163	406	46
Andakflsá	4	6	1	5	0	2	1	0	3	1	7	3	4	8	4	2	67	9	3	3	6	11	2	4	1	7	1	4	6	67	0
Hvítá í Borgarfirði	152	190	99	192	0	149	155	364	305	722	264	583	358	924	663	486	662	729	992	617	495	530	673	560	721	538	436	789	477	992	0
Grimsá og Tunguá	71	49	49	74	4	216	108	357	188	30	136	213	189	250	291	313	175	339	119	171	174	143	74	51	250	99	102	29	152	357	4
Pverá og Kjarrá	35	80	36	99	0	121	98	109	152	247	101	247	263	463	266	258	299	375	147	180	89	62	69	10	52	35	26	56	142	463	0
Álftá	29	46	57	108	184	191	156	220	251	261	298	332	324	443	338	179	238	309	269	189	211	103	141	78	100	119	110	169	195	443	29
Hítará	5	17	14	30	23	23	39	0	34	61	33	25	30	29	28	38	36	42	43	27	13	41	33	50	34	2	11	13	28	61	0
Hörðudalsá	7	0	5	8	0	0	0	0	0	0	0	0	0	0	0	0	0	0	0	0	0	0	0	0	0	0	0	0	1	8	0
Miðá og Tunguá		0	0	1	0	4	0	1	0	0	0	0	0	2	2	0	0	0	0	0	0	0	0	0	0	0	0	0	0	4	0
Haukadalsá neðri	0	0	1	0	0	4	0	0	0	0	0	0	0	0	1	1	0	0	1	0	0	0	1	2	0	1	0	0	4	0	
Haukadalsá efri		0	0	3	1	0	1	0	0	14	0	2	0	7	1	0	5	1	0	0	5	0	1	0	4	1	1	2	14	0	
Staðarhólsá og Hvolsá	3	2	3	2	6	3	1	2	1	2	4	2	2	2	3	1	3	28	0	0	2	0	2	0	0	0	0	2	3	28	0
Fjarðarhornsá	0	2	1	0	0	0	0	0	0	0	0	0	0	0	0	0	0	1	3	6	1	1	0	0	1	0	6	1	6	0	
Selá í Steingrímsfirði	0	0	0	0	0	0	0	0	0	0	0	0	0	0	0	0	1	0	0	0	0	0	0	0	1	0	0	0	1	0	0
Staðará í Steingrímsfirði	0	0	0	0	1	0	0	0	0	0	0	0	0	14	0	0	1	10	0	1	0	0	0	0	0	0	0	1	14	0	
Hrútafjarðará og Síká	1	1	0	2	7	1	0	0	2	1	2	0	1	0	1	2	4	0	2	5	2	2	0	2	0	4	2	3	2	7	0
Miðfjarðará	20	16	7	58	41	6	10	7	9	3	2	2	15	6	9	6	22	37	12	26	41	50	42	64	15	20	0	20	64	0	
Viðdalsá og Fitjá	0	3	26	13	41	34	23	14	16	42	52	316	80	151	143	198	60	307	364	166	291	27	597	133	175	290	294	205	145	597	0
Vatnsdalsá	366	685	245	667	571	506	335	388	450	318	300	617	520	695	807	670	729	729	684	1567	1509	1863	2021	2794	2700	2371	1962	1805	1031	2794	245
Cjúfurá	8	1	3	5	19	7	26	1	9	6	407	4	6	0	24	1	1	7	25	15	7	15	5	14	5	75	21	27	407	0	
Fremri Laxá á Ásum	1069	2352	338	2965	4121	3911	2709	2744	2011	1301	2379	2567	2496	2980	3278	3666	3646	4602	3884	5279	4549	5456	4009	3376	3622	3199	3112	3171	5456	338	
Húseyjarkvísl	60	7	12	426	476	483	369	540	373	349	407	373	349	397	277	559	587	427	330	397	597	644	650	868	635	630	678	733	451	868	7
Hrolleisdalsá	0	13	7	34	102	59	53		113	32	126	86	73	81	87	75	173	137	326	170	181	371	111	158	104	71	53	108	371	0	
Flókadalsá	87	27	93	111	109	54	82	0	81	29	36	169	244	263	249	419	401	398	311	181	237	0	560	538		529	479	219	560	0	
Fljótaá		0	3	0	10	0	0	0	0	1	0	0	0	1	0	1	0	1	0	0	1	0	0	1	6	13	8	2	2	13	0
Svarfæðardalsá				24		44	23	40	18	44	26	39	30	52	156	111	80	61	123	65		42	119	228	186	281	79	149	88	281	18
Hörgá				23	79	25	24	38	11	46	43	26	36	39	31	8	43	93	49	25	95	138	259	306	269	357	221	185	99	357	8
Eyjafjarðará	34	49	26	67	165	86	100	153	130	146	138	142	169	241	202	352	418	483	389	232	116	90	268	411	396	657	343	236	223	657	26
Fnjóská	20	8	14	14	31	25	12	45	27	31	53	25	44	22	28	40	73	79	111	49	42	63	119	201	90	195	203	179	66	203	8
Skjálfandafljót	591	99	150	119	79	88	44	53	6	18	25	89	69	17	70	55	35	68	50	69	171	119	180	33	56	32	48	13	87	591	6
Laxá í Aðaldal	835	894	1079	1275	1465	1286	1307	705	900	594	929	1068	1232	1647	1796	1542	905	1386	1513	1149	1125	271	1329	613	571	334	728	732	1043	1796	271
Laxá ofan Brúa	0	3158	4861	4247	2792	2613	2316	1942	2281	2478	3700	7947	6313	6522	5863	4526	5091	6293	7915	7714	6909	4547	2013	4501	4549	4853	4014	4089	4430	7947	0
Litlaá		710	610	422	784	684	730	583	464	416	269	427	466	512	1662	922	1022	1014	626	393	619	587	829	1038	1289	1659	1392	1480	800	1662	269
Ormarsá	35	50	21	20	31	28	15	42	9	33	17	11	18	35	44	42	97	92	82	56	79	80	53	64	171	179	104	160	60	179	9
Selá í Vopnaf.	3	8	10	14	9	2	4	2	8	9	6	5	14	8	5	9	7	18	3	4	4	5	4	0	12	12	17	18	8	18	0
Vesturdalsá	3	1	9	5	4	4	0	6	1	1	0	0	19	2	0	0	0	0	0	2	0	2	3	1	0	9	7	0	3	19	0
Hofsá og Sunnudalsá	11	8	53	31	50	43	54	22	24	30	49	32	29	39	27	34	58	133	113	75	130	109	87	121	101	133	106	69	63	133	8
Gílsá og Selfjót	33	12	15	72	70	53	39	20	27	45	77	67	34	88	54	65	93	92	240	133	215	174	167	325	178	246	122	124	103	325	12
Breiðdalsá	197	31	15	148	169	245	117	307	242	306	375	214	146	143	315	285	517	549	657	517	309	306	282	396	205	450	286	512	294	657	15
Geirlandsá	362	303	356	193	88	109	108	118	251	235	389	274	151	237	159	193	140	404	231	187	205	357	211	339	235	143	153	366	232	404	88
Skaftá	977	715	725	221	436	366	464	612	388	813	969	407	456	550	836	1305	1152	1093	1038	1171	689	807	1039	1470	470	828	806	387	757	1470	221
Eldvatn í Meðallandi	84	170	92	35	27	38	112	129	171	192	161	215	57	53	58	78	76	151	168	172	168	245	192	252	197	223	229	369	147	369	27
Grænlekur	1297	1001	823	1815	1648	1664	2138	3392	4787	3783	2493	1679	1293	1264	864	1331	1189	1700	1429	940	828	678	623	905	970	1099	851	293	1528	4787	293
Tungufljót	62	67	148	84	134	134	249	156	174	239	384	224	273	286	286	347	345	529	380	324	414	276	271	283	240	267	271	276	254	529	62
Heiðarvatn			215	399	301	373	284	255	116	102	212	269	277	326	609	378	410												302	609	102
Rangár og Fiská				179	163	527	359	337	230	393	635	468	487	494	547	216	772	924	594	398	470	80	306	359	413	178	185	420	406	934	80
Ölfusá		60	29	44	70	52	58	366	53	103	161	513	399	301	911	741	1006	227	797	246	71	98	331	94	613	418	51	748	317	1006	29
Sog	2	6	8	6	10	7	6	11	15	29	23	37	40	28	27	43	22	34	104	63	55	66	31	70	146	56	50	35	37	146	2
Hróarholtslekur	403	550	465	322	391	449	301	580	374	326	492	1011	680	765	931	949	924	920	1266	914	980	833	878	712	757	557	739	792	688	1266	301

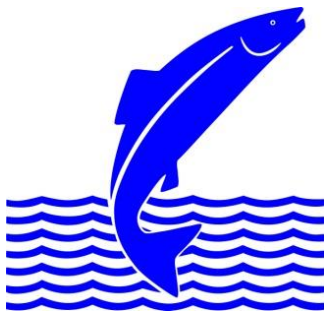
Table 18. Catch of Arctic charr in some Icelandic rivers 1987 - 2014. Migratory and stationary stocks are included.

River	Y E A R																								Average veiði	Max veiði	Min veiði				
	1987	1988	1989	1990	1991	1992	1993	1994	1995	1996	1997	1998	1999	2000	2001	2002	2003	2004	2005	2006	2007	2008	2009	2010				2011	2012	2013	2014
Laxá í Leirársveit	0	7	7	1	4	6	18	14	21	4	35	62	42	43	124	48	24	30	5	7	8	6	12	12	11	7	5	0	20	124	0
Andaklúsá	10	231	284	479	3	341	0	3	218	189	238	116	84	131	294	194	203	282	147	49	28	21	47	12	3	18	1	20	130	479	0
Hvítá í Borgarfirði	27	9	15	19	613	88	106	14	12	4	4	78	11	2	886	653	601	664	342	312	26	253	287	133	22	24	54	15	188	886	2
Grímsá og Tunguá	1	2	2	24	250	12	3	6	1	1	0	4	4	1	7	4	1	2	1	1	6	1	4	5	3	1	7	1	13	250	0
Þverá og Kjarrá	3	9	111	76	113	14	35	25	9	7	63	2	5	8	19	13	15	10	3	5	1	2	0	1	4	2	0	0	20	113	0
Álftá	0	1	2	1	4	6	10	9	2	3	6	6	0	7	0	4	2	3	0	5	0	0	0	1	4	2	0	3	3	10	0
Hítará	193	134	132	234	518	396	184	0	259	131	426	7	344	146	136	129	126	80	57	23	58	34	47	35	14	2	6	6	138	518	0
Hörðudalsá	18	291	231	614	451	340		271	423	361	1021	1003	453		907		81	80	11		223	39	6	15	48	44	118	306	1021	6	
Miða og Tunguá		73	70	470	478	650	530	411	674	350	396	825	925	591	1009	593	273	432	184	120	328	350	125	121	152	277	56	77	390	1009	56
Haukadalsá neðri	679	7	21	8	74	8	57	111	71	8	36	12	58	42	22	19	50	30	21	20	17	2	8	7	25	18	11	1	52	679	1
Haukadalsá efri		22	14	237	919	149	267		590	739	593	892	949	731	93	644	453	276	278	135	240	367	64	370	151	163	95		377	949	14
Staðarhólsá og Hvolsá	401	224	338	941	882	397	616	733	934	1490	1316	1469	1016	949	583	439	487	1000	375	323	549	283	379	234	124	81	33	269	602	1490	33
Fjarðarhornsá	20	107	306	562	536	233	73	80	135	165			47		93	129	116	179	100	273	184	185	53	52	22	36	31	86	152	562	20
Selá í Steingrímsfirði	261	12		229	334	259	77	404	145	356		171	246	529	0	90	68	640	217	81	81	195	54		96	98	40	46	189	640	0
Staðará í Steingrímsfirði	584	35	13	183	385	265	254	163	201	92	164	288	76	297	275	84	550		107	34	44	234	72					200	584	13	
Hrútafjarðará og Síká	269	59	68	221	532	192	135	129	221	499	363	564	346	610	358	221	303	180	158	159	100	213	66	148	119	114	33	31	229	610	31
Miðfjarðará	236	167	89	221	273	152	97	123	144	47	267	304	277	97	316	148	225	235	180	216	61	256	299	122	71	100	0	0	169	316	0
Viðidalsá og Fitjá	1325	366	26	377	547	467	676	1214	3485	2782	1551	5568	3824	3138	1903	1143	2144	3004	1118	1460	1725	213	986	1728	1016	1106	1524	1385	1636	5568	26
Vatnsdalsá	727	1182	270	1642	1851	1112	1427	1058	812	2498	1861	1438	2755	2712	1919	1975	1430	1186	779	724	1000	1478	1340	1345	1319	1254	570	672	1369	2755	270
Gjúfurá	0	0		1	273	75	1	6	192	41	52	4	665	1	9	1	16	3	36	58	4	86	4	394	151	176	325	657	120	665	0
Fremri Laxá á Ásum	137	236	15	34	52	35	6	26	41	61	52	64	27	153	53	23	8	12	0	3	3	0	4	2	13	0	0	39	236	0	
Húseyjarkvísl	7	2	8	64	28	17	32	44	48	45	30	46	17	8	18	14	27	12	6	27	14	25	10	7	3	2	5	2	20	64	2
Hrollleiðsdalsá	47	45	221	401	410	381	628		218	198	377	325	311	281	397	409	346	261	166	152	159	196	329	203	266	210	180	274	628	45	
Flókadalsá	110	1028	280	2134	2198	1144	1040	1673	489	265	1135	655	2405	775	1539	1169	2279	2473	1084	499	380	528	283	1634	1223	965	961	776	1112	2473	110
Fljótaá		1	44	627	643	881	1242	7071	6928	6931	1648	893	792	944	298	164	288	508	215	357	208	438	1255	1493	1978	1942	1022	935	1472	7071	1
Svarfaðardalsá				873	1049	668	1691	358	417	475	526	704	560	842	378	310	407	311	567		400	1058	825	343	643	357	632	626	1691	310	
Hörgá				1692	1394	1238	1783	1590	1063	1245	1293	1229	856	1216	1373	1110	935	964	896	670	860	843	794	1054	739	769	557	536	1068	1783	536
Eyjafjarðará	1557	1467	127	2123	2836	3095	3080	3319	2151	2098	3625	3137	2900	2620	2931	1954	1678	2052	1516	916	610	723	672	736	593	458	235	449	1774	3625	127
Fnjóska	496	217	238	390	469	239	251	550	391	339	409	579	700	612	695	370	736	545	355	781	598	850	474	583	485	626	369	366	490	850	217
Skjálfandafliót	275	338	561	391	331	160	173	198	151	214	506	403	658	1034	356	357	338	239	116	218	292	397	402	217	234	153	306	13	323	1034	13
Laxá í Aðaldal	35	187	114	137	86	48	114	57	52	29	64	52	48	115	121	91	37	27	22	8	25	2	15	26	17	3	2	0	55	187	0
Laxá ofan Brúa	0	19	63	16	10	3	5	1	3	7	42	412	145	41	5	4	8	16	21	16	7	2	1	1	5	6	6	12	31	412	0
Litlaá		297	307	310	368	551	259	220	193	131	104	97	123	117	388	199	249	97	110	31	67	128	77	202	268	248	377	163	210	551	31
Ormarsá	245	114	141	181	175	127	131	126	103	101	68	93	129	128	56	62	53	30	109	60	69	54	52	20	239	211	208	137	115	245	20
Selá í Vopnaf.	249	56	52	211	105	103	51	106	84	164	115	37	55	72	53	49	63	60	50	18	33	12	32	16	13	23	14	12	68	249	12
Vesturdalsá	506	51	78	513	1402	726	321	383	474	872	1080	457	815	864	1079	502	1002	557	342	223	241	417	370	412	173	563	239	327	535	1402	51
Hofsá og Sunnudalsá	357	32	143	67	357	471	268	261	183	344	250	246	557	744	30	207	276	559	247	154	247	152	385	393	130	407	345	308	290	744	30
Gilsá og Selfjót	230	61	71	455	382	368	242	381	261	532	421	221	340	375	469	426	447	491	429	347	310	304	178	295	130	159	114	149	307	532	61
Breiðdalsá	453	74	70	600	22	23	410	369	977	396	197	235	415	601	1121	567	628	881	1193	405	263	412	354	188	94	79	319	343	417	1193	22
Geirlandsá	60	69	48	29	50	43	40	39	48	43	28	26	27	54	44	50	44	38	21	8	3	29	32	14	9	13	3	1	33	69	1
Skaftá	17	19	12	1	5	7	19	28	13	21	16	19	27	42	25	33	14	13	5	25	12	25	25	18	17	15	2	21	18	42	1
Eldvatn í Meðallandi	21	22	3	21	3	27	19	6	60	114	61	29	27	16	50	48	39	61	19	67	24	56	42	61	40	18	36	12	36	114	3
Grenlækur		78	12	151	247	177	288	273	403	290	294	223	114	128	212	283	209	267	252	145	84	99	48	50	17	33	25	24	164	403	12
Tungufljót	63	37	28	107	65	46	43	85	67	60	53	52	40	66	130	62	79	74	23	6	6	18	46	34	39	39	14	51	130	6	
Heiðarvatn			106	203	213	319	159	296	131	89	498	616	385	331	1021	188	433												333	1021	89
Rangár og Fiská				75	65	106	90	83	94	165	150	72	54	95	88	75	89	50	40	20	15	16	54	35	63	218	47	52	76	218	15
Ölfusá			8	7	12	17	12	10	72	40	20	30	21	11	16	26	21	16	7	6	4	4	2	4	6	1	1	13	15	72	1
Sog	255	312	227	426	558	173	130	209	316	914	754	860	455	451	765	752	529	508	449	102	177	198	279	99	150	154	154	180	376	914	99
Hróarholtslækur	13	134	110	144	84	172	92	136	169	360	80	113	96	55	52	84	38	65	21	13	4	12	27	5	8	1	21	19			

Table 19. Catch, by region in netfisheries in 2014 in numer and weight (kg).

Area Area/River	Atlantic salmon		Brown trout		Arctic charr	
	number	weight	number	weight	number	weight
Reykjanes	0	0	0	0	0	0
Borgarfjörður netaveiði í sjó			2	2	3	1
Hvítá Borg. neðri hluti			71	72	37	35
Hvítá efríhl. og Norðurlingfl.	51	131	6	7	22	25
Reyðarvatn			77	92	57	55
Torfavatn			108	74	181	122
Vesturland	51	131	264	247	300	238
Selá í Ísafjarðardjúpi	4	16			13	13
Vestfirðir	4	16	0	0	13	13
Arnarvatn-Stóra			60	60	1240	1240
Héraðsvötn	3	5	36	48	103	86
Norðurá *						
Miklavatn í Fljótum *						
Norðurland vestra	3	5	96	108	1343	1326
Skjálfandaflljót	12	50			157	105
Vestmannsvatn *						
Mývatn			1756	2000	645	700
Norðurland eystra	12	50	1756	2000	802	805
Lagarfljót	23	48	87	87	123	123
Austurland	23	48	87	0	123	123
Skaftá	3	7	40	110		
Kúðaflljót	20	77	105	432	6	24
Mjóásvatn (Álftaveri) *						
Markarfljót Álár *						
Veiðivötn			1737	3500	5903	7494
Kvíslaveitur *						
Þjórsá	2250	7454	217	496	1	1,5
Laugarvatn			229	158	2032	821
Apavatn			8336	3914	11537	3559
Úlfjótuvatn *						
Hvítá í Árnassýslu	660	2490	157	333	35	10
Ölfusá	730	2285	357	1275	3	3
Suðurland	3663	12313	11178	10218	19517	11913
Samtals	3756	12563	13381	12573	22098	14418

* no records



Veidimálastofnun

Keldnaholt, 112 Reykjavík
Telephone +354 580-6300

www.veidimal.is veidimalastofnun@veidimal.is



Ásgarður, Hvanneyri
311 Borgarnes



Brekkugata 2
530 Hvammstangi



Verið, Háeyri1
550 Sauðárkrókur



Austurvegur 3-5
800 Selfoss