

Catch statistics for Icelandic rivers and lakes 2009

Guðni Guðbergsson



VEIÐIMÁLASTOFNUN
Institute of Freshwater Fisheries

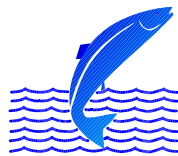


.....
F I S K I S T O F A

VMST/10032

Catch statistics for Icelandic rivers and lakes 2009

Guðni Guðbergsson



VEIÐIMÁLASTOFNUN
Institute of Freshwater Fisheries



FISKISTOFA
Directorate of Fisheries

Institute of Freshwater Fisheries
Keldnaholt, 112 Reykjavík

Directorate of Fisheries
Dalshrauni 1, 220 Hafnarfirði

Reykjavik, June 2010

CONTENTS

INTRODUCTION.....	1
METHODS.....	2
RESULTS.....	3
The catch in 2009.....	3
Age composition of the salmon catch.....	5
DISCUSSION.....	5
REFERENCES.....	7
FIGURES	8-12
TABLES.....	13-30

INTRODUCTION

There are five native fish species in freshwater in Iceland. These are the salmonid species, Atlantic salmon (*Salmo salar*), brown trout (*Salmo trutta*) and arctic charr (*Salvelinus alpinus*). The other two are, European eel (*Anquilla anquilla*) and three-spined sticklebacks (*Gasterosteus aculeatus*). Of these species salmon has the highest economic value.

The fishing season in Icelandic rivers is at the maximum of 105 days in the period from 20th of May to 30th of September. In rivers where salmon fishery is mainly based on release of reared salmon smolts the fishing season can be extended to 120 days and throughout October with permission from the Directorate of Fisheries (Fiskistofa). The daily fishing period is usually 12 hours, and the fishery must be closed for 84 hours each week. In most Icelandic rivers rod and line is the only fishing gear allowed. A fixed number of rods are used in each river. The fishing effort has remained almost unchanged since 1970. Each Fishery association needs to make a plan that outlines the management strategy. The management plan needs approval by the Directorate of Fisheries after a review by the Institute of Freshwater Fisheries.

Net fishery is almost exclusively in the largest glacial rivers. In the net fishery gillnets are the most common fishing method and draftnet are used at few locations for brown trout and Arctic charr. The weekly net fishing period is from Tuesday morning at 10 AM to Friday evening at 10 PM. The weekend closure is to reduce fishery and allow fish migration to the up rivers regions.

There has been a general ban on ocean salmon fishing in Icelandic waters since 1932. An exception to that were few localities with coastal fishery at the coast of west Iceland (Vesturland) (Figure 1). At these localities coastal gillnets were used set from land. These fishing rights were permanently bought out in 1997 by fishery associations in nearby rivers and with governmental support. This was possible since salmon caught by anglers are of much higher value than salmon caught in the net fishery. All salmon harvested in Iceland is in freshwater and mostly based on single stock fishery.

The fishing rights go with the ownership of the land adjacent to the rivers. The landowners are usually farmers. All the landowners of the fishing rights in a river system have by law to form a fishery association, which manages the exploitation of the fish stocks, within the frame set by the law. Usually the rivers fishery association rents or leases the fishing rights to angling syndicates, angling clubs or directly to anglers. The entire riverbank is accessible to the

limited number of rod fishermen that have fishing permit each day. Most rivers have fishing lodges with high quality accommodation.

The catch is recorded in special logbooks in the fishing lodges. The logbook recording system was established in 1946. At the end of the fishing season the logbooks from every river are gathered and statistical information are processed by the Institute of Freshwater Fisheries. The results are sent back to the fisheries associations as well as new logbooks before the next fishing season.

Catch statistics from Icelandic rivers for the 2009 fishing season have now been processed and the main results are summarized in this report. This work is based on Gudbergsson (2010), *Lax- og silungsveiðin 2009*, a report from the Institute of Freshwater Fisheries (in Icelandic). The salmon trout and charr statistics have been compiled this way since 1974.

METHODS

Iceland is divided into statistical regions regarding to salmon catches (Figure 1). Information on the catch is summarized in tables for each region. The results from all regions are then combined for the whole country. The catch statistics for each river is summarized by fishing gear used. The harvesting methods used are rod and line, gillnets or draft-nets. The number of fish released (catch and release) from the rod fisheries are recorded. In previous years ocean ranching harvest has also been summarised. However, there has not been any release of smolts for commercial ocean ranching of salmon since 1998.

By tradition, the weight of freshwater fish in Iceland was measured in pounds where 1 pound = 500 g. In 1999 this was changed to kg and the accuracy of 0,1 kg was anticipated. Fish length is measured to the nearest cm. For each fish, date of catch, pool name and number, type of bait, catch-and-released, as well as the fisherman is recorded in the logbook. Fishing pools are commonly numbered in the logbooks for ease of computer processing.

The salmon catch can be divided by weight into grilse (1SW, one sea winter) and salmon (2SW, two sea winter). Males up to 4 kg and females up to 3.5 kg are grilse (one sea winter) and larger fish are salmon (two sea winter). This deviation into sea age has been confirmed with aging by scales. Salmon with more than 2 winters at sea are rare in Iceland and repeated spawning has been in low percentages in later years.

Brown trout and Arctic charr are caught in many rivers as a by-catch with the salmon. In other rivers these are the most dominant and targeted fish species. In some rivers brown trout and Arctic charr are the dominant species at certain parts of the rivers especially at slow flowing areas at the lower parts of the rivers. In this report stationary trout and sea-trout were combined, and the same applies for sea-run Arctic charr and stationary Arctic charr.

In the rod fishery catch-and-release has been increasing in popularity usually on voluntarily basis by the anglers but in few rivers catch and release is the only allowed fishing method. Many rivers have fly fishing only and bag limit of different magnitude is common. In most recent years, anglers have been encouraged by the Institute of Freshwater Fisheries, the Federation of Icelandic river owners and the Association of Icelandic angling clubs to release two-sea winter salmon in order to protect the two-sea winter salmon stock component that have steadily declined in number since the mid 1980s. The catch statistics is processed for both the total catch including catch and released and the catch landed in numbers of fish and weight.

In Iceland the rod catch in few rivers is based on release of hatchery reared salmon smolts. The catch in these rivers were close to 19 thousand fish in 2009 was 25,4% of the total rod catch. The catch in these rivers was recorded separately since catch figures are often used as a measure of stock abundance of wild salmon.

RESULTS

The salmon catch in 2009

A total of 74.408 salmon were caught in rod fisheries in Icelandic rivers in 2009 where of 17.514 (23,5%) was released and the catch landed (caught and retained) was 56.894 salmon (Table 1). The catch landed by weight was 142.988 kg. In the rod fishery the catch of grilse (1SW) were 52.413 fish (92,1%) and 121.461 kg and 4.481 salmon (7,9%) (2SW) weighing 21.527 kg. Of the total number of released fish 13.161 (71,1%) were grilse and 4.356 (24,9 %) salmon. Of the statistical regions the highest number of fish was caught in the rod fishery in the Vesturland region 23.047 fish where off 3.890 were released and the catch landed was 19.228 fish and 45.709 kg. There were fewer fish recorded in other areas (Table 1).

The catch in the net fishery was 9.607 fish and 27.323 kg in total. The highest number of fish was caught in the Sudurland region, 9.225 fish (Table 2). Of the net catch 8.285 and 19.430 kg was grilse (1SW) and 1.322 and 7.890 kg was salmon (2SW).

The total combined salmon catch landed (rod and nets) in Iceland 2009 was 66.501 fish and 170.311 kg, there of 60.698 (91,2%) were 1SW and 5.803 (8,8%) 2SW. The total 1SW catch was 140.894 kg and the 2SW catch was 29.417 kg (Table 3).

The total number of brown trout caught in rod fishery was 49.192 fish, 6.963 were released and the catch landed was 42.229 fish and 44.975 kg (table 4). The total number of Arctic charr in the rod fishery was 32.919 fish, 4.193 was released and the catch landed was 28.726 fish and 19.692 kg.

The salmon rod catch in 2009 decreased by 9.716 fish (11,5%) from the 2008 salmon season (table 5; figure 2). The total rod catch in 2009 was 50,1% higher than the average catch in the 35 years period from 1974 to 2008. The salmon catch in the net fishery was 204 fish (2,2%) higher than the catch in 2008 but 21,2% lower than the average catch in the period from 1974-2008 (Table 5, Figure 3).

In 2009 the rod catch in rivers where the catch is mainly based on releases of hatchery reared smolts was 18.884 fish that is 25,4% of the total catch and the catch was close to 44 tonnes. The rod catch of wild salmon in 2009 was 55.524 fish that was the highest recorded catch of wild salmon caught in rod fishery (Table 5, figure 3). In total 29,9% of the rod catches was released.

No commercial ocean ranching activities have been operating since 1998. In previous years, substantial activities of ocean ranching with Atlantic salmon was operated in Iceland reaching up to 168 thousand fish caught in 1993 as the highest catch (harvest) (Table 5; Figure 4).

The highest number of salmon caught in rod fishery was in River Ytri-Rangá 10.749 fish with River Eystri-Rangá in second place with 4.237 fish and River Midfjardará in third place with 3.962 fish. The list of top 10 salmon rivers is shown in table 6. The top 3 list for catch landed was the same for Ytri-Rangá and Eystri-Rangá but Blanda was in the third place.

The top 10 list of brown trout is shown in table 7 and the top 10 list of Arctic charr is shown in table 8. Since 1987, the catch of brown trout has increased with record catch in 2005 (Figure 5). The catch of Arctic charr have been increasing for the past three years after a low catch in 2007 (Figure 6).

The rod catch records for individual rivers are listed by statistical areas in tables 9-15. The salmon catch in most Icelandic rivers are listed in table 16 for the period from 1974-2009 including average catch, maximum and minimum catch in the period. The rod catch for brown trout from 1987-2009 is listed in table 17 and for Arctic charr in table 18.

The catch in the net fishery divided by species, rivers and regions is listed in table 19. The highest catch was in River Thjórsá with 5.034 salmon. River Thjorsá is a glacial river in South Iceland.

Age compositions of the salmon catch

The sea-age composition of salmon is shown in figure 7. The figure includes the rivers with yearly catch records since 1970 and includes 88% of the average the annual salmon catch. It is worth noticing that after high catch in the 1980s the catch of 1SW salmon decreased after 1979 and increased after 1985. The 2SW salmon showed similar pattern until 1980 but opposite to the improving catch of 1SW fish the 2SW salmon stock component have shown almost a steady decline since the mid 1980s. This is of major concern and anglers are kindly asked to release 2SW females in order to prevent the 2SW component from over fishing and to conserve the 2SW genetic resource in the salmon stocks.

Catch and release in the rod fishery has increased from 1996 when first recorded and was 23,5% of the total rod catch in 2009 but 29,9% of the wild salmon (Figure 8). Catch and release was 20,0% of the total grilse (1SW) fish but 25,8% of the wild grilse (Figure 9). The proportion of catch and release of salmon (2SW) was 49,3% in total but 56,3 of the wild fish.

DISCUSSION

Since 1932 there has been a general ban on ocean fishery for salmon in Icelandic waters with the exception of few locations with coastal fishery. The number of nets used in river has been decreasing due to lease of nets and buy-out of fishing rights, by anglers and river owners. Now the fishing rights in coastal areas have been bought-out permanently with support from the government. Since the 1998 fishing season all salmon were harvested in freshwater. The number of rods allowed and used in Icelandic salmon rivers has been almost the same since 1970. With stable effort the catch can to large extent be used as an indicator for the size of the salmon run. It can also be seen from the catch statistics that the salmon catch in rivers in the same area show similar fluctuations.

The proportion of 2SW fish is usually higher in rivers in the north and northeast Iceland than in the south and southwest regions. Since 1981-1983 the number of 2SW salmon has been declining. This happened although the sex ratio of the run is stable with close to 65% females for MSW and 20% for 1SW for the period from 1973. That relates to higher mortality at the second year at sea in the later years (Gudbergsson and Gudjonsson 2003). The reasons for this is not clear but this seems to be connected to environmental factors in the ocean (Gudjonsson et al. 1995) that are most likely poor conditions at the feeding grounds for salmon at their second year at sea. These changes has effected the catch in rivers with high proportion of 2SW salmon.

There are considerable fluctuations between years in the salmon catch in Iceland. Usually salmon catch in rivers in the same region fluctuate together. The size of the salmon run depends on the number of smolts produced in each river and their survival at sea. It seems to be that common factors affect the production of smolts in the rivers in the same area and also the return rate from the ocean. Climatic factors are of greatest importance and significant correlation has been found between the catch of grilse and ocean temperature at the time the smolts are migrating in the spring or early summer (Scarnecchia 1984; Antonsson et al. 1996).

The exploitation rate in the rod fisheries, in Icelandic rivers, has been estimated to be between 30-80% (Gudjonsson 1986). Recent information on exploitation in the rod fishery indicates that it can, in some rivers, be 50-60% for 1SW salmon and 60-80% for 2SW salmon(Gudjonsson et al. 1996, Jónsson et al. 2008). In rivers with fish counters it has been shown that the rod catch reflects the changes in stock size. Further studies on exploitation and the size of the spawning stock in Icelandic salmon rivers are needed.

The brown trout catch was the second highest on record. Catch of Arctic charr has, on the other hand been decreasing from 2001 to 2007 but are increasing again for all fishing areas combined. However, catch of Arctic charr has decrease in many rivers in southwest Iceland. The reasons for the decline in catch of Arctic charr are not known but can possibly relate to global warming. The mechanism for this is not fully understood and needs further studies.

Anglers are encouraged to record the trout and charr catch in the same manner as the salmon catch i.e. record each fish with information on length weight and sex of each fish. The catch records give valuable information on fluctuation in salmon stocks and stock compositions.

The continuous decline in the 2SW salmon component is of major concern. The Institute of Freshwater Fisheries has encouraged the Fisheries associations and the authorities to protect 2SW salmon.

REFERENCES

Antonsson, Th., Gudbergsson, G. and Gudjónsson, S. 1996. Environmental continuity in fluctuation of fish stocks in the North Atlantic Ocean, with particular reference to Atlantic salmon. *North American Journal of Fisheries Management* 16:540-547.

Gudbergsson, G. 2010. Lax- og silungsveiðin 2009. Report from The Institute of Freshwater Fisheries, VMST/10031. 36 pp.

Guðni Guðbergsson og Sigurður Guðjónsson 2003. Marine mortality of Atlantic salmon in Iceland. pp 110-114. In: Marine mortality of Atlantic salmon, *Salmo salar* L: methods and measures. E.C.E. Potter, N. Ó Maoiléidigh og G. Chaput (Eds.) Canadian Science Advisory Secretariat. Research Document 2003/101.

Gudjónsson, Th. 1986. Exploitation of Atlantic Salmon in Iceland. In: Atlantic Salmon: Planning for the future. (ed.) Derik Mills and David Piggins.

Gudjónsson, S. Einarsson, S.M., Antonsson, Th. and Gudbergsson, G. 1995. Relation of grilse/salmon ratio to environmental changes in several wild stocks of Atlantic salmon (*Salmo salar*) in Iceland. *Can. J. Fish. Aquat. Sci.* 52:1385-1398.

Ingi Rúnar Jónsson, Þórólfur Antonsson og Sigurður Guðjónsson 2008. Stofnstærð lax (*Salmo salar*) og bleikju (*Salvelinus alpinus*) í samhengi við veiði. *Fræðaging landbúnaðarins.* 5:234-241.

Scarnecchia, D.L. 1984. Climatic and oceanic variations affecting yield of Icelandic stocks of Atlantic salmon. *Can. J. Fish. Aquat. Sci.*, Vol 41, pp 917-935.

Scarnecchia, D.L. 1984. Forecasting yields of two-sea-winter Atlantic salmon (*Salmo salar*) from Icelandic Rivers. *Can. J. Fish. Aquat. Sci.*, 8:1234-1240.

Scarnecchia, D.L., Isaksson, A., White, S.E. 1989. New and revised catch forecasts for two-sea-winter Atlantic salmon (*Salmo salar*) in Icelandic rivers. *J. Appl. Ichthyol.* 5:101-110.

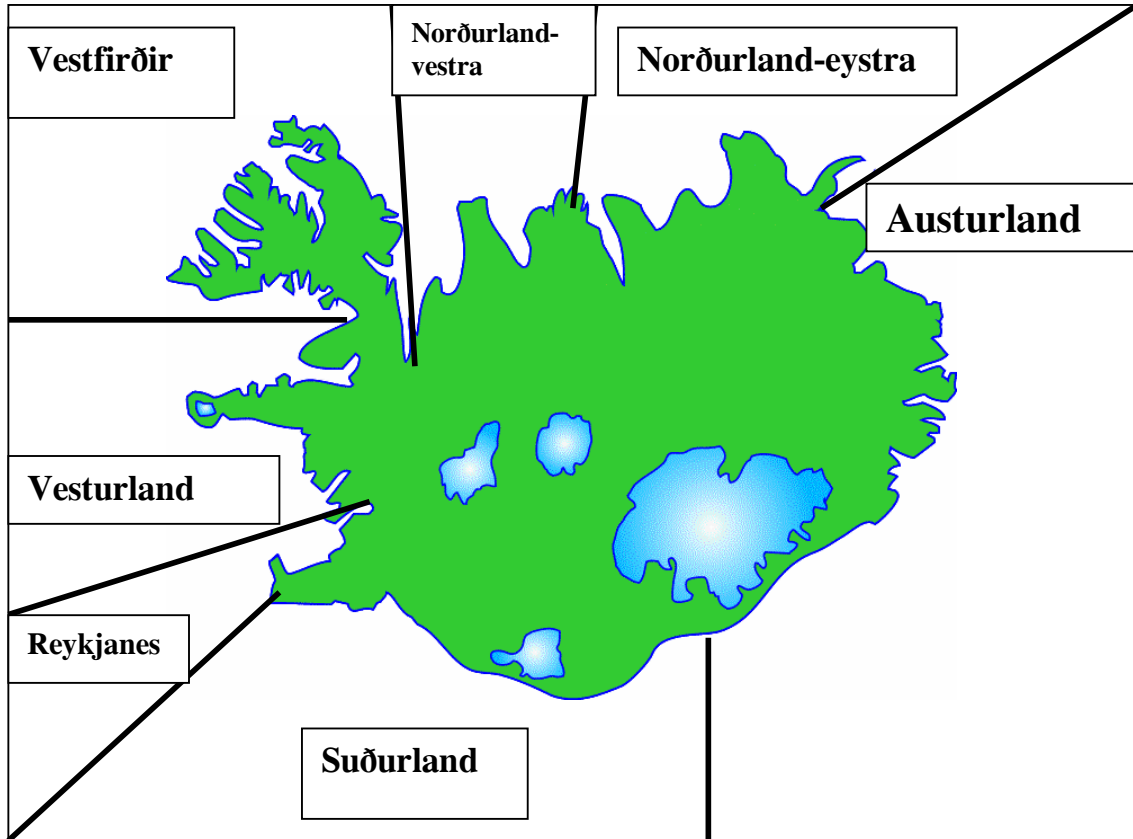


Figure 1. Statistical regions for the Atlantic salmon, brown trout and Arctic charr catch in Iceland.

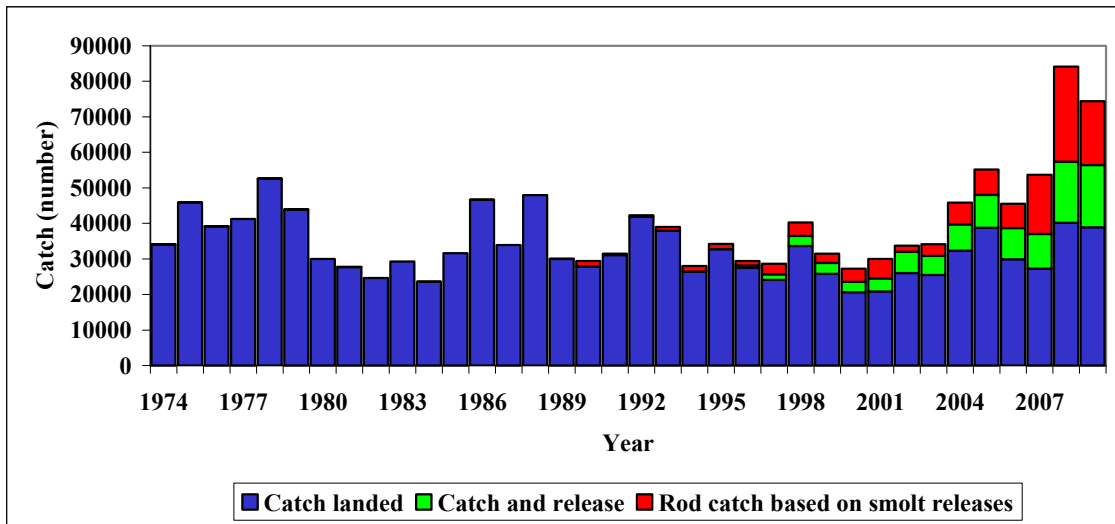


Figure 2. Salmon catch in rod and line fishery in Iceland 1974 - 2009. Catch landed, catch and released and catch in rivers with salmon fishery based mainly on smolt releases.

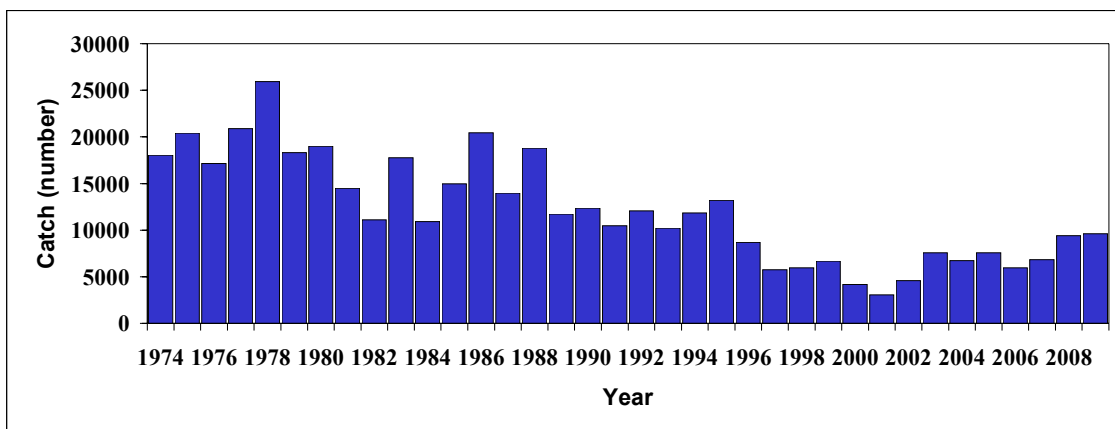


Figure 3. Salmon catch in gillnet fishery in Iceland 1974 - 2009.

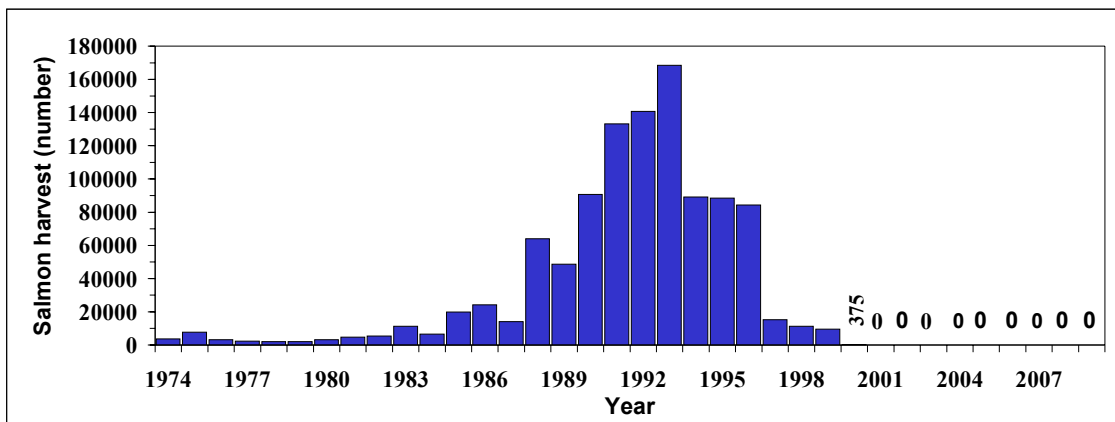


Figure 4. Salmon harvest in ocean ranching in Iceland 1974-2009.

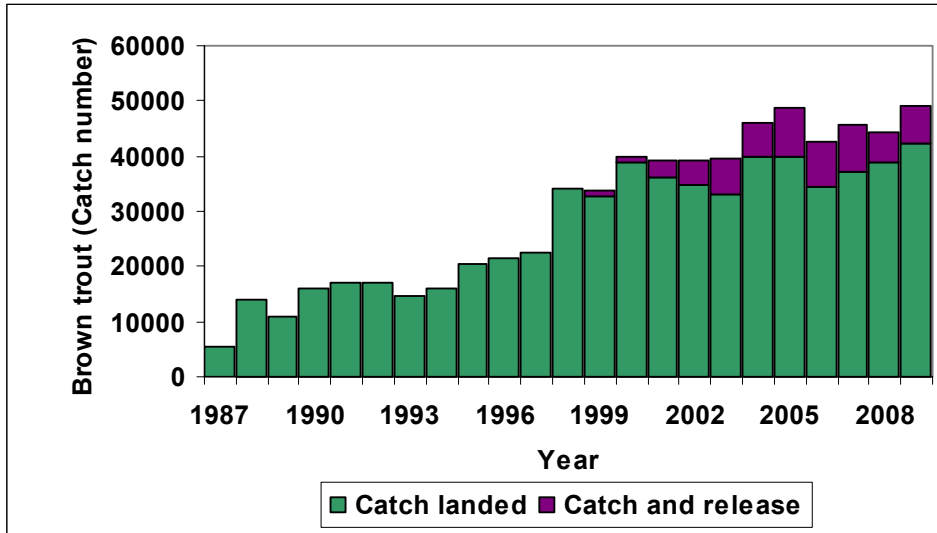


Figure 5. Catch and catch and released brown trout in the rod fishery in Iceland 1987-2009.

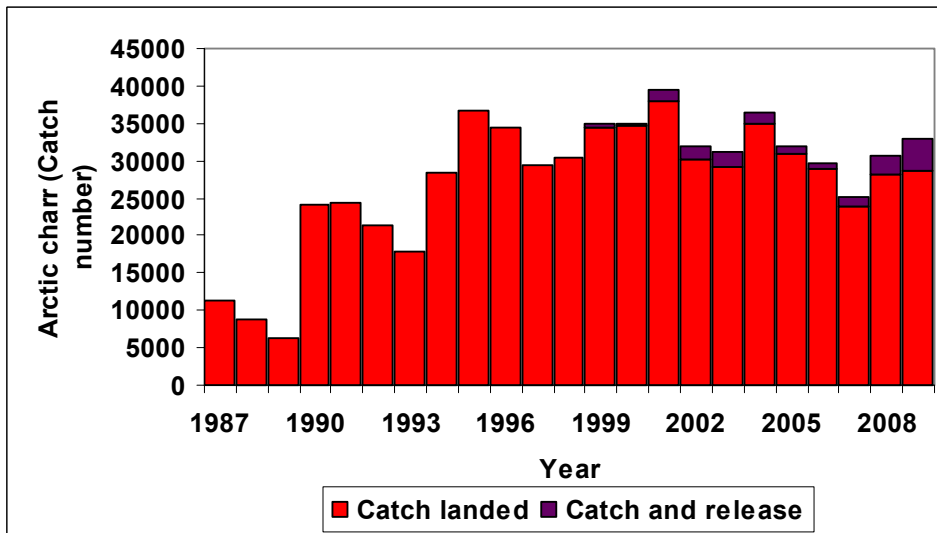


Figure 6. Catch and catch and released Arctic charr in the rod fishery in Iceland 1987-2009.

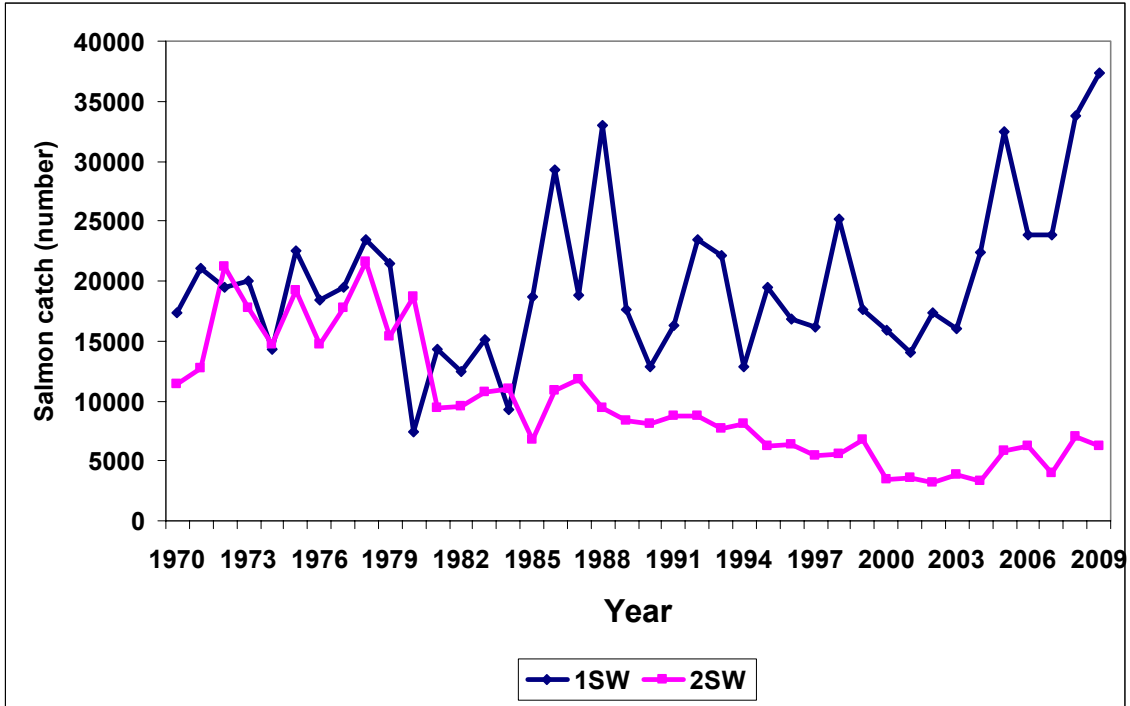


Figure 7. The sea-age composition of Atlantic salmon in rod catches in Icelandic rivers 1970-2009 (1SW = one-sea-winter, 2SW two-sea-winter).

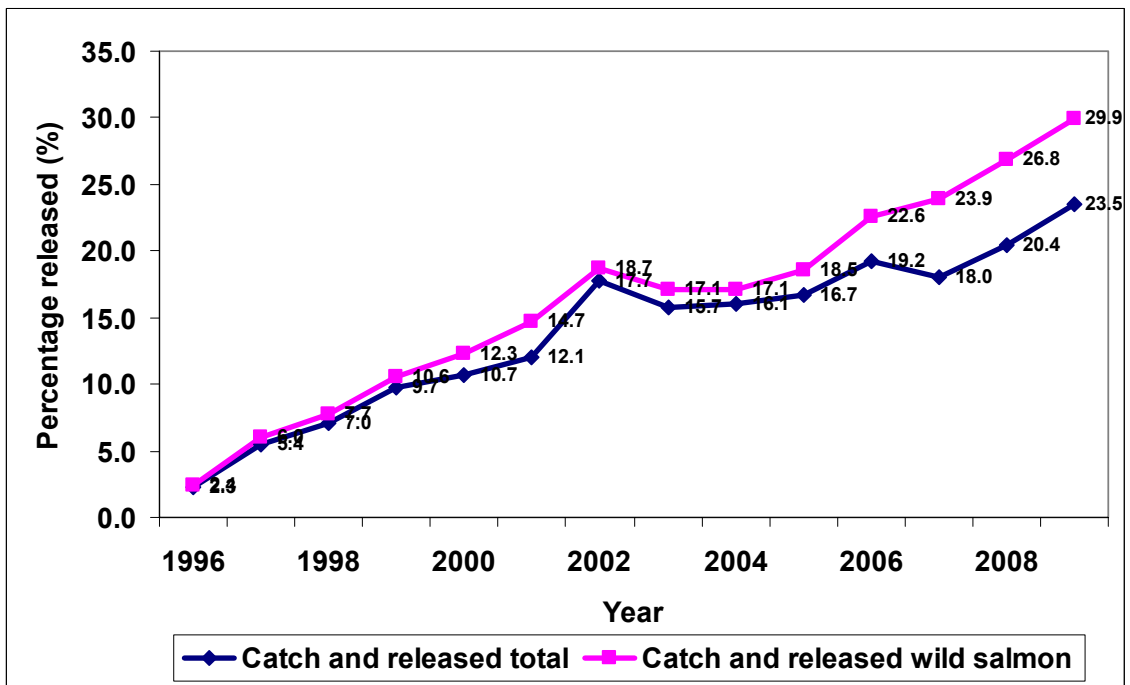


Figure 8. Released salmon in the rod catch in Icelandic salmon rivers in 1996-2009 for the total catch and for wild salmon only.

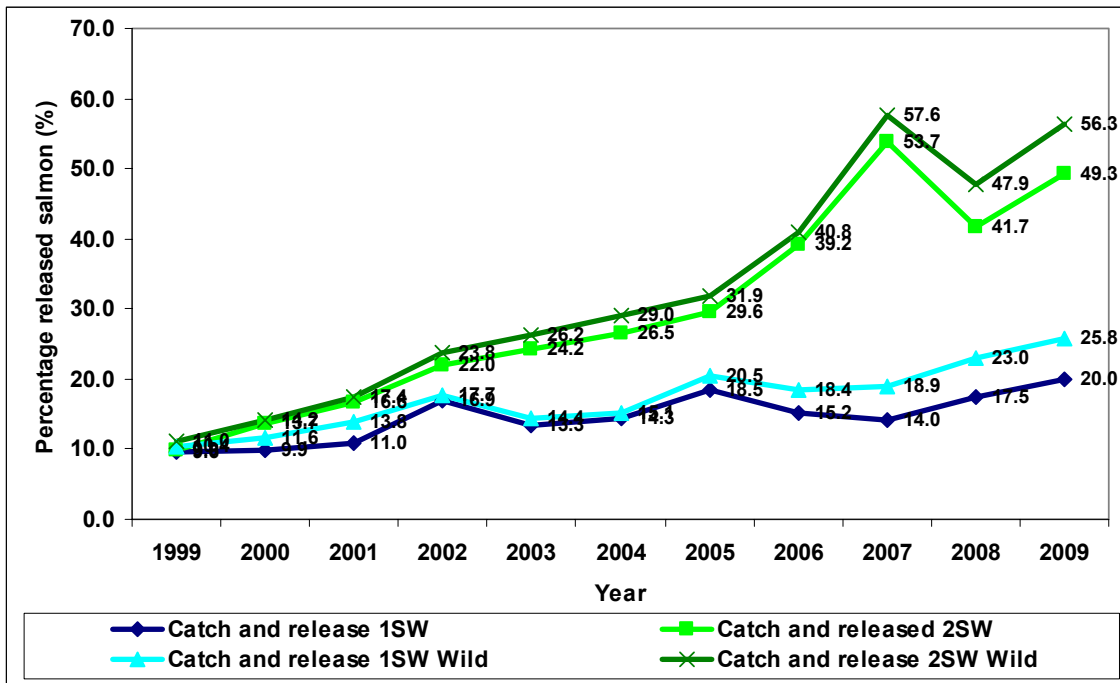


Figure 8. Released fish in the rod catch in Icelandic salmon rivers in 1999-2009 for 1SW and 2SW salmon in the total catch and for wild salmon only.

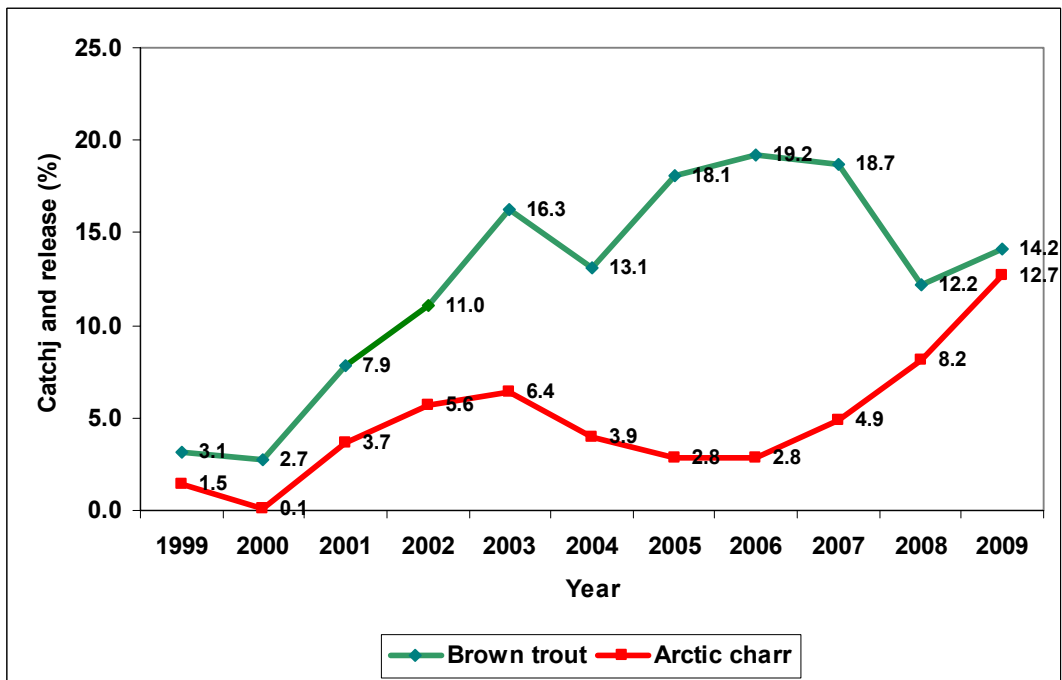


Figure 9. Released brown trout and Arctic charr in the rod catch in Icelandic rivers and lakes in 1999-2009.

Table 1. Salmon catch, rod and line, in Icelandic rivers 2009.

Region	Salmon catch, rod and line											
	Catch	Released	Released	Released	Catch	Catch	Catch	MW	Catch	Catch	MW	Catch
	(number)	(number)	1SW	2SW	landed	landed	1SW	1SW	1SW	2SW	2SW	2SW
Reykjanes	3479	806	771	35	2673	6141	2603	2.24	5825	70	4.51	316
Vesturland	23047	3819	3311	508	19228	45709	18376	2.28	41810	852	4.58	3899
Vestfirðir	2117	123	101	22	1994	5303	1740	2.35	4088	254	4.78	1215
Norðurland vestra	13940	6115	4858	1260	7825	21424	6988	2.45	17111	837	5.15	4313
Norðurland eystra	4466	2216	1074	1142	2250	6586	1772	2.31	4087	478	5.23	2499
Austurland	5282	2975	1879	1096	2307	6016	1906	2.14	4077	401	4.84	1939
Suðurland	22077	1460	1167	293	20617	51809	19028	2.34	44463	1589	4.62	7346
Samtals:	74408	17514	13161	4356	56894	142988	52413	2.32	121461	4481	4.80	21527

Table 2. Salmon catch, nets, in Icelandic river 2009.

Region	Salmon catch, nets						Ranched	
	Catch	Catch	Catch	Catch	Catch	Catch	Catch	
	(number)	landed (kg)	1SW number	1SW (kg)	2SW (number)	2SW (kg)	(number)	landed (kg)
Reykjanes	0	0	0	0	0	0	0	0
Vesturland	250	560	237	492	13	68	0	0
Vestfirðir	0	0	0	0	0	0	0	0
Norðurland vestra	25	65	23	54	2	11	0	0
Norðurland eystra	29	105	24	60	5	45	0	0
Austurland	78	198	66	137	12	61	0	0
Suðurland	9225	26395	7935	18690	1290	7705	0	0
Samtals:	9607	27323	8285	19433	1322	7890	0	0

Table 3. Total salmon catch in Icelandic rivers 2009, rod, gillnets and ranched.

Region	Salmon catch total (rod, nets and ocean ranched)						Percentage of total	
	Catch	Catch	Catch	Catch	Catch	Catch	Number	Weight
	(number)	landed (kg)	1SW number	1SW (kg)	2SW (number)	2SW (kg)	%	%
Reykjanes	2673	6141	2603	5825	70	316	4.0	3.6
Vesturland	19478	46269	18613	42302	865	3967	29.3	27.2
Vestfirðir	1994	5303	1740	4088	254	1215	3.0	3.1
Norðurland vestra	7850	21489	7011	17165	839	4324	11.8	12.6
Norðurland eystra	2279	6691	1796	4147	483	2544	3.4	3.9
Austurland	2385	6214	1972	4214	413	2000	3.6	3.6
Suðurland	29842	78204	26963	63153	2879	15051	44.9	45.9
Samtals:	66501	170311	60698	140894	5803	29417	100	100

Table 4. Catch of brown trout and Arctic charr in rod and line fishery in Icelandic river and lakes in 2009.

Region	Catch with rod and line Brown trout (sea-run and stationary)				Catch with rod and line Arctic charr (sea-run and stationary)			
	Catch (number)	Catch and released	Catch landed (number)	Catch landed (kg)	Catch (number)	Catch and released	Catch landed (number)	Catch landed (kg)
Reykjanes	1477	193	1284	1072	166	28	138	67
Vesturland	1807	216	1591	1824	1420	79	1341	994
Vestfirðir	225	5	220	241	1927	119	1808	1010
Norðurland vestra	8357	930	7427	5754	5824	1417	4407	3917
Norðurland eystra	7567	2898	4669	5282	5002	765	4237	3887
Austurland	696	85	611	581	2988	390	2598	1955
Suðurland	29063	2636	26427	30221	15592	1395	14197	7862
Samtals:	49192	6963	42229	44975	32919	4193	28726	19692

Table 5. The salmon catch in Iceland 1974-2009 in numbers of fish. Total rod catch, rod catch landed, catch and release, catch in rivers with rod catch based mainly on smolt releases, net catch, harvest in Ocean ranching and total catch of salmon as well as the percentage of released fish.

Year	Rod catch	Catch landed	Catch and release	Catch and release total (%)	Ranched rod catch	Catch and release Ranched rod	Catch landed Ranched rod	Rod catch wild salmon number	Rod catch landed Wild salmon	Catch and release Wild salmon	Catch and release Wild (%)	Net catch landed	Rod and net catch landed	Rod and net catch wild landed	Ocean ranched harvest	Total catch	Percentage Ranched in rod fishery
1974	34107	34107			29		29	34078	34078	0	0	18044	52151	52122	3765	55916	0.1
1975	45882	45882			57		57	45825	45825	0	0	20402	66284	66227	7720	74004	0.1
1976	39249	39249			95		95	39154	39154	0	0	17130	56379	56284	3247	59626	0.2
1977	41302	41302			46		46	41256	41256	0	0	20864	62166	62120	2405	64571	0.1
1978	52679	52679			82		82	52597	52597	0	0	25946	78625	78543	1953	80578	0.2
1979	43955	43955			98		98	43857	43857	0	0	18306	62261	62163	1967	64228	0.2
1980	30007	30007			65		65	29942	29942	0	0	18992	48999	48934	3138	52137	0.2
1981	27777	27777			80		80	27697	27697	0	0	14478	42255	42175	4626	46881	0.3
1982	24671	24671			65		65	24606	24606	0	0	11107	35778	35713	5340	41118	0.3
1983	29267	29267			22		22	29245	29245	0	0	17761	47028	47006	11194	58222	0.1
1984	23582	23582			10		10	23572	23572	0	0	10912	34494	34484	6595	41089	0.0
1985	31621	31621			17		17	31604	31604	0	0	14942	46563	46546	19750	66313	0.1
1986	46671	46671			78		78	46593	46593	0	0	20437	67108	67030	24100	91208	0.2
1987	33907	33907			32		32	33875	33875	0	0	13960	47867	47835	14140	62007	0.1
1988	47979	47979			53		53	47926	47926	0	0	18781	66760	66707	64017	130777	0.1
1989	30082	30082			80		80	30002	30002	0	0	11738	41820	41740	48617	90437	0.3
1990	29443	29443			1622		1622	27821	27821	0	0	12339	41782	40160	90726	132508	5.5
1991	31492	31492			453		453	31039	31039	0	0	10454	41946	41493	133203	175149	1.4
1992	42309	42309			521		521	41788	41788	0	0	12062	54371	53850	140763	195134	1.2
1993	39025	39025			1041		1041	37984	37984	0	0	10197	49222	48181	168427	217649	2.7
1994	28042	28042			1576		1576	26466	26466	0	0	11846	39888	38312	89225	129113	5.6
1995	34241	34241			1523		1523	32718	32718	0	0	13185	47426	45903	88527	135953	4.4
1996	29436	28767	669	2.3	1298	0	1298	28138	27469	669	2.4	8668	37435	36137	84365	121800	4.4
1997	28640	27082	1558	5.4	2960	5	2955	25680	24127	1553	6.0	5735	32817	29862	15248	48065	10.3
1998	40286	37460	2826	7.0	3848	16	3832	36438	33628	2810	7.7	5939	43399	39567	11223	54622	9.6
1999	31438	28383	3055	9.7	2536	2	2534	28902	25849	3053	10.6	6657	35040	32506	9648	44688	8.1
2000	27257	24339	2918	10.7	3744	24	3720	23513	20619	2894	12.3	4170	28509	24789	375	28884	13.7
2001	29943	26332	3611	12.1	5466	25	5441	24477	20891	3586	14.7	3043	29375	23934	0	29375	18.3
2002	33767	27782	5985	17.7	1791	31	1760	31976	26022	5964	18.6	4583	32365	30605	0	32365	5.3
2003	34111	28750	5361	15.7	3443	165	3278	30668	25472	5196	16.9	7582	36332	33054	0	36332	10.1
2004	45831	38469	7362	16.1	6285	165	6120	39546	32349	7197	18.2	6742	45211	39091	0	45211	13.7
2005	55168	45944	9224	16.7	7413	228	7185	47755	38759	8996	18.8	7560	53504	46319	0	53504	13.4
2006	45545	36810	8735	19.2	6977	92	6885	38568	29925	8643	22.4	5953	42763	35878	0	42763	15.3
2007	53703	44012	9691	18.0	15053	432	14621	38650	29391	9259	24.0	6826	50838	36217	0	50838	28.0
2008	84124	66946	17178	20.4	29268	2469	26799	54856	40147	14709	26.8	9403	76349	49550	0	76349	34.8
2009	74408	56894	17514	23.5	18884	925	17959	55524	38935	16589	29.9	9607	66501	48542	0	66501	25.4
1974 - 2008 Mean	37901	35668	6013	13.2	2792	281	2688	35109	32980	5732	15.3	12193	47860	45172	29286	77983	

Table 6. Top 10 lists of salmon rivers in 2009 including catch landed and catch and released and for catch landed only.

No	River	Salmon Catch ¹	No	River	Catch landed
1	Ytri-Rangá og Hólsá	10749	1	Ytri-Rangá og Hólsá	10407
2	Eystri-Rangá	4237	2	Eystri-Rangá	4135
3	Miðfjarðará	3962	3	Blanda	2335
4	Blanda	2445	4	Þverá og Kjarrá	1988
5	Þverá og Kjarrá	2370	5	Langá	1987
6	Norðurá	2345	6	Norðurá	1840
7	Langá	2250	7	Laxá í Dölum	1427
8	Víðidalsá og Fitjá	1999	8	Víðidalsá og Fitjá	1356
9	Selá í Vopnafirði	1990	9	Hvítá í Borgarfirði	1310
10	Haffjarðará	1622	10	Tungufljót Biskupstungu	1281

¹ Includes catch landed and catch and released

Table 7. Top 10 list of river or lakes with brown trout in 2009 including both migratory and stationary fish stocks.

No	River or Lake	Brown trout catch
1	Veiðivötn	20548
2	Fremri Laxá á Ásum	4009
3	Vatnsdalsá	2021
4	Laxá í Þing ofan Brúa	2013
5	Reykjadalsá	1678
6	Laxá í Aðaldal	1329
7	Steinsmýrarvötn	1162
8	Vatnamót	931
9	Litlaá	829
10	Djúpavatn	754

Table 8. Top 10 list of river or lakes with Arctic charr in 2009 including both migratory and stationary fish stocks.

No	River or Lake	Arctic charr catch
1	Veiðivötn	9673
2	Hlíðarvatn	3663
3	Vatnsdalsá	1340
4	Fljótaá	1255
5	Svarfaðardalsá	1104
6	Víðidalsá og Fitjá	986
7	Arnarvatn-Stóra og Austurá	947
8	Ólafsfjarðará	919
9	Brúará	905
10	Hörgá	794

Table 9. Number and weight in the rod catch in Reykjanes 2009. Total catch, catch landed, mean weight, grilse/salmon ratio of Atlantic salmon, brown trout, and Arctic charr (MW = mean weight (kg)).

River	Salmon					Grilse (1SW)					Salmon (2SW)					Brown trout					Arctic charr						
	Catch	Released	Catch landed	Weight landed	MW	Catch	Landed	Released	% Released	MW	Catch	Landed	Released	% Released	MW	Catch	Landed	Released	% Released	Weight Landed	MW	Catch	Landed	Released	% Released	Weight Landed	MW
Elliðaár	880	117	763	1768	2.3	863	748	115	13.3	2.3	17	15	2	11.8	4.4	198	118	80	40.4	94	0.8	2	1	1	50.0	1	0.6
Elliðavatn																155	155	0	0	93	0.6	25	25	0	0.0	20	0.8
Úlfarsá (Korpa)	178	18	160	370	2.3	172	154	18	10.5	2.2	6	6	0	0.0	4.6	35	35	0	0.0	56	1.6	0	0	0	0.0	0	0.0
Leirvogsá	777	3	774	1646	2.1	761	758	3	0.4	2.1	16	16	0	0.0	4.7	152	137	15	9.9	219	1.6	0	0	0	0.0	0	0.0
Blikdalsá	9	0	9	21	2.3	5	5	0	0.0	2.1	4	4	0	0.0	4.4	0	0	0	0.0	0	0.0	0	0	0	0.0	0	0.0
Kiðafellsá *																											
Laxá i Kjós	1087	410	677	1630	2.4	1056	657	399	37.8	2.3	31	20	11	35.5	4.4	157	99	58	36.9	139	1.4	3	2	1	66.7	4	1.2
Bugða	267	248	19	51	2.6	244	17	227	93.0	2.4	23	2	21	91.3	4.3	1	0	1	100	0	0.0	0	0	0	0.0	0	0.0
Meðalfellsvat *																											
Brynjudalsá	170	8	162	398	2.4	164	157	7	4.3	2.4	6	5	1	16.7	4.8	4	3	1	25	3	1.1	0	0	0	0.0	0	0.0
Botsá	111	2	109	257	2.4	109	107	2	1.8	2.3	2	2	0	0.0	4.6	21	21	0	0	38	1.8	0	0	0	0.0	0	0.0
Diúpavatn																754	716	38	5.0	430	0.6	136	110	26	0.0	54	0.4
Reykjanes Total:	3479	806	2673	6141	2.3	3374	2603	771	22.9		105	70	35	33.3		1477	1284	193	15.0	1072	0.83	166	138	28	16.9	79	0.57

* no records

Table 10. Number and weight in the rod catch in Vesturland 2009. Total catch, catch landed, mean weight, grilse/salmon ratio of Atlantic salmon, brown trout, and Arctic charr (MW = mean weight (kg)).

River	Salmon					Grilse (1SW)					Salmon (2SW)					Brown trout					Arctic charr							
	Catch	release	Catch landed	Weight landed	MW	Catch	Landed	Released	% Released	MW	Catch	Landed	Released	% Released	MW	Catch	Landed	Released	% Released	Weight Landed	MW	Catch	Landed	Released	% Released	Weight Landed	MW	
Vötn í Svínadal *																												
Selós og Þverá	103	3	100	236	2.4	94	92	2	2.1	2.2	9	8	1	11.1	4.4	92	92	0	0.0	92	1.0	0	0	0	0	0	0.0	
Laxá í Leirársveit	1267	253	1014	2395	2.5	1190	984	206	17.3	2.3	77	30	47	61.0	4.9	92	73	19	20.7	131	1.8	12	10	2	16.7	11	1.1	
Leirá í Leirársveit	42	0	42	112	2.7	38	38	0	0.0	2.5	4	4	0	0.0	4.0	64	34	30	46.9	34	1.0	5	4	1	20	4	1.0	
Hafnará *																												
Hvítá efri hluti	57	0	57	240	4.2	40	40	0	0.0	3.0	17	17	0	0.0	7.1	3	3	0	0.0	2	0.7	240	240	0	0	168	0.7	
Hvítá í Borg. Neðrihl.	36	0	36	86	2.4	30	30	0	0.0	2.1	6	6	0	0.0	3.3	37	37	0	0.0	52	1.4	0	0	0	0	0	0.0	
Hvítá í Borgarfirði &	1332	22	1310	3161	2.4	1261	1243	18	1.4	2.3	71	67	4	5.6	4.5	633	606	27	4.3	606	1.0	47	47	0	0	47	1.0	
Gufuá	123	0	123	271	2.2	119	119	0	0.0	2.1	4	4	0	0.0	4.0	52	52	0	0.0	31	0.6	0	0	0	0	0	0.0	
Andakilsá	706	31	675	1709	2.5	674	647	27	4.0	2.5	32	28	4	12.5	4.2	2	2	0	0.0	1	0.7	47	47	0	0	28	0.6	
Grímsá og Tunguá	1314	580	734	1680	2.3	1275	724	551	43.2	2.3	39	10	29	74.4	4.6	74	66	8	10.8	99	1.5	4	4	0	0	2	0.6	
Flókadalsá	744	7	737	1698	2.3	728	721	7	1.0	2.3	16	16	0	0.0	4.0	6	6	0	0.0	9	1.5	0	0	0	0	0	0.0	
Reykjadalsá	251	0	251	686	2.7	221	221	0	0.0	2.6	30	30	0	0.0	4.1	7	6	1	14.3	13	2.2	0	0	0	0	0	0.0	
Þverá og Kjarrá	2370	382	1988	4894	2.4	2266	1939	327	14.4	2.4	104	49	55	52.9	4.9	69	69	0	0.0	104	1.5	0	0	0	0	0	0.0	
Norðurá	2345	505	1840	4052	2.2	2313	1829	484	20.9	2.2	32	11	21	65.6	5.3	47	3	44	93.6	5	1.5	13	13	0	0	18	1.4	
Norðlingafljót	740	6	734	1934	2.6	642	637	5	0.8	2.3	98	97	1	1.0	4.7	11	11	0	0.0	11	1.0	0	0	0	0	0	0.0	
Gljúfurá	323	1	322	712	2.2	320	319	1	0.3	2.2	3	3	0	0.0	3.8	20	20	0	0.0	20	1.0	3	3	0	0	2	0.7	
Langá	2250	263	1987	4203	2.1	2203	1953	250	11.3	2.1	47	34	13	27.7	4.2	8	8	0	0.0	8	1.0	31	28	3	9.7	34	1.2	
Urriðará	75	3	72	172	2.4	67	65	2	3.0	2.2	8	7	1	12.5	4.1	39	39	0	0.0	43	1.1	0	0	0	0	0	0.0	
Álfhá og Veita	468	4	464	1209	2.6	427	426	1	0.2	2.5	41	38	3	7.3	4.3	141	138	3	2.1	193	1.4	0	0	0	0	0	0.0	
Hítará	820	43	777	1816	2.4	777	741	36	4.6	2.2	43	36	7	16.3	4.6	33	32	1	3.0	35	1.1	47	44	3	6.4	44	1.0	
Hafþjardará	1622	1213	409	988	2.8	1344	391	953	70.9	2.4	278	18	260	93.5	4.7	120	64	56	46.7	83	1.3	36	15	21	58.3	20	1.3	
Núpá í Eyjahreppi #																												
Laxá í Miklaholtshr.	81	4	77	202	2.6	70	68	2	2.9	2.4	11	9	2	18.2	4.2	42	41	1	2.4	49	1.2	2	2	0	0	1	0.7	
Straumfjarðará	348	48	300	706	2.5	327	295	32	9.8	2.3	21	5	16	76.2	5.7	26	25	1	3.8	28	1.1	34	34	0	0	31	0.9	

Table 10 (continued). Number and weight in the rod catch in Vesturland 2009. Total catch, catch landed, mean weight, grilse/salmon ratio of Atlantic salmon, brown trout and Arctic charr (MW = mean weight (kg)).

River	Salmon					Grilse (1SW)					Salmon (2SW)					Brown trout					Arctic charr						
	Catch	release	Catch landed	Weight landed	MW	Catch	Landed	Release	% Released	MW	Catch	Landed	Released	% Released	MW	Catch	Landed	Released	% Released	Weight Landed	MW	Catch	Landed	Release	% Release	Weight Landed	MW
Staðará *																											
Grishólsá og Bakká	17	0	17	39	2.3	16	16	0	0.0	2.2	1	1	0	0.0	4.0	49	49	0	0.0	39	0.8	144	143	1	0.7	72	0.5
Órlygsstaðaa-Kársst.	63	1	62	157	2.5	58	57	1	1.7	2.3	5	5	0	0.0	4.9	50	50	0	0.0	60	1.2	15	9	6	40	8	0.9
Fróðá	174	115	59	136	2.5	162	59	103	63.6	2.3	12	0	12	100.0	5.3	2	2	0	0.0	2	1.0	8	7	1	12.5	5	0.7
Valshamarsá	20	0	20	37	1.9	20	20	0	0.0	1.9	0	0	0	0.0	0.0	13	13	0	0.0	9	0.7	0	0	0	0	0	0.0
Setbergsá	19	0	19	38	2.0	19	19	0	0.0	2.0	0	0	0	0.0	0.0	0	0	0	0.0	0	0.0	0	0	0	0	0	0.0
Stóra-Langadalsá	18	4	14	14	1.9	18	14	4	22.2	1.9	0	0	0	0.0	0.0	27	16	11	40.7	35	2.2	68	29	39	57.4	64	2.2
Laxá á Skógarströnd	112	1	111	234	2.1	110	109	1	0.9	2.1	2	2	0	0.0	4.3	3	3	0	0.0	3	1.0	1	1	0	0	1	1.0
Svínafossá	163	140	23	46	2.5	151	19	132	87.4	2.4	12	4	8	66.7	4.0	12	2	10	83.3	1	0.4	0	0	0	0	0	0.0
Dunká	153	0	153	340	2.2	146	146	0	0.0	2.1	7	7	0	0.0	4.9	0	0	0	0.0	0	0.0	1	1	0	0	1	0.8
Höröudalsá	42	1	41	99	2.4	39	39	0	0.0	2.3	3	2	1	33.3	3.7	0	0	0	0.0	0	0.0	39	38	1	2.6	34	0.9
Skrauma *																											
Miðá og Tunguá	342	0	342	952	2.8	279	279	0	0.0	2.4	63	63	0	0.0	4.6	0	0	0	0.0	0	0.0	125	125	0	0	100	0.8
Haukadalsá neðri	1107	37	1070	2505	2.4	1044	1013	31	3.0	2.2	63	57	6	9.5	4.6	0	0	0	0.0	0	0.0	8	8	0	0	6	0.8
Haukadalsá efri	27	0	27	64	2.4	24	24	0	0.0	2.1	3	3	0	0.0	4.2	1	1	0	0.0	1	0.9	64	64	0	0	38	0.6
Laxá í Dölum	1440	13	1427	3583	2.5	1345	1337	8	0.6	2.4	95	90	5	5.3	4.7	1	1	0	0.0	1	0.6	2	2	0	0	1	0.6
Ljá *																											
Ljárskógarvötn *																											
Fáskrúð	455	57	398	945	2.4	437	384	53	12.1	2.3	18	14	4	22.2	4.2	0	0	0	0.0	0	0.0	1	1	0	0	2	1.5
Glerá	54	0	54	118	2.2	52	52	0	0.0	2.1	2	2	0	0.0	4.5	1	1	0	0.0	2	2.0	0	0	0	0	0	0.0
Laxá í Hvammsveit	51	7	44	96	2.2	49	42	7	14.3	2.2	2	2	0	0.0	3.8	1	1	0	0.0	1	0.8	6	6	0	0	3	0.5
Flekkudalsá	252	20	232	511	2.2	248	229	19	7.7	2.2	4	3	1	25.0	4.7	10	10	0	0.0	10	1.0	2	2	0	0	2	1.0
Krossá	252	2	250	552	2.2	242	240	2	0.8	2.1	10	10	0	0.0	3.9	14	10	4	28.6	6	0.6	28	27	1	3.5714	14	0.5
Búðardalsá	639	49	590	1539	2.6	578	536	42	7.3	2.4	61	54	7	11.5	4.4	3	3	0	0.0	2	0.8	8	8	0	0	6	0.8
Staðarhólsá og Hvolsá	230	4	226	542	2.4	224	220	4	1.8	2.3	6	6	0	0.0	4.5	2	2	0	0.0	2	1.2	379	379	0	0.0	227	0.6
Vesturland Total	23047	3819	19228	45709	2.4	21687	18376	3311	15.3		1360	852	508	37.4		1807	1591	216	12.0	1824	1.1	1420	1341	79	5.6	994	0.7

* no records

& Hvítá í Borgarfirði, combined for: Brenna, Svarthöfði, Straumar, Skuggi, Ferjukot-Norðurkot.

River closed for all fishery

Table 11. Number and weight in the rod catch in Vestfirðir 2009. Total catch, catch landed, mean weight, grilse/salmon ratio of Atlantic salmon, brown trout, and Arctic charr (MW = mean weight (kg)).

River	Salmon					Grilse (ISW)					Salmon (2SW)					Brown trout					Arctic charr							
	Catch	Released	Catch landed	Weight landed	MW	Catch	Landed	Released	%	MW	Catch	Landed	Released	%	MW	Catch	Landed	Released	%	Weight Landed	MW	Catch	Landed	Released	%	Weight Landed	MW	
Gufudalsá	38	0	38	92	2.4	36	36	0	0.0	2.4	2	2	0	0.0	3.7	8	8	0	0	7	0.9	629	597	32	5.1	358	0.6	
Borskafljarðará	34	1	33	88	2.7	29	28	1	3.4	2.3	5	5	0	0.0	4.4	5	5	0	0	10	1.9	67	64	3	4.5	38	0.6	
Vatnsdalsá í Vatnsfirði	107	27	80	224	2.9	87	70	17	19.5	2.4	20	10	10	50.0	4.9	0	0	0	0	0	0.0	69	68	1	1.4	61	0.9	
Fjarðarhornská	227	19	208	511	1.5	205	187	18	8.8	2.2	22	21	1	4.5	4.6	1	1	0	0	2	1.5	53	53	0	0.0	32	0.6	
Skálmardalsá	2	0	2	5	2.6	2	2	0	0.0	2.6	0	0	0	0.0	0.0	0	0	0	0	0	0.0	376	352	24	6.4	176	0.5	
Mórudalsá *			0										0															
Suðurfossá *			0										0															
Staðará í Ségandafirði	46	15	31	76	2.5	42	29	13	0.0	2.3	4	2	2	0.0	4.7	26	23	3	13.0	25	1.1	44	31	13	29.5	22	0.7	
Fljótavík	0	0	0	0	0.0	0	0	0	0.0	0.0	0	0	0	0.0	0.0	7	7	0	0	0.6	556	524	32	5.8	419	0.8		
Heydalsá *			0										0							0	0							
Langadalsá	362	13	349	982	2.8	289	282	7	2.4	2.3	73	67	6	8.2	5.0	0	0	0	0	0	0.0	7	7	0	0.0	8	1.1	
Ísafjarðará	55	1	54	156	2.9	45	44	1	2.2	2.5	10	10	0	0.0	4.6	0	0	0	0	0	0.0	26	20	6	23.1	10	0.5	
Laugardalsá	498	28	470	1122	2.4	482	454	28	5.8	2.3	16	16	0	0.0	5.1	178	176	2	1.1	194	1.1	2	2	0	0.0	2	1.0	
Laugardalsvatn	8	0	8	11	2.7	8	8	0	0.0	2.7	0	0	0	0.0	0.0	0	0	0	0	0	0.0	0	0	0	0.0	0	0.0	
Hvannadalsá	275	4	271	793	3.0	215	214	1	0.5	2.4	60	57	3	5.0	4.9	0	0	0	0	0	0.0	0	0	0	0.0	0	0.0	
Selá í Ísafjarðardjúpi																												
Bjarnarfjarðará*																												
Selá í Steingrímsf. *																												
Staðará í Steing. *																												
Miðdalsá *																												
Viðdalsá, Þverá, Húsa	209	1	208	618	3.0	171	170	1	0.6	2.6	38	38	0	0.0	4.7	0	0	0	0	0	0.0	52	52	0	0.0	36	0.7	
Hrófá	61	0	61	153	2.5	57	57	0	0.0	2.3	4	4	0	0.0	4.4	0	0	0	0	0	0.0	17	17	0	0.0	9	0.5	
Prestbakkaá *																												
Krossá	99	1	98	252	2.6	88	87	1	1.1	2.3	11	11	0	0.0	4.6	0	0	0	0	0	0.0	0	0	0	0.0	0	0.0	
Víkurá	46	13	33	83	2.6	43	30	13	30.2	2.5	3	3	0	0.0	3.9	0	0	0	0	0	0.0	29	21	8	27.6	15	0.7	
Laxá í Hrútafirði	50	0	50	137	2.7	42	42	0	0.0	2.2	8	8	0	0.0	5.6	0	0	0	0	0	0.0	0	0	0	0.0	0	0.0	
Vestfirðir Total:	2117	123	1994	5303	2.7	1841	1740	101	5.5		276	254	22	8.0		225	220	5	2.3	237	1.08	1927	1808	119	6.2	1186	0.66	

* No records.

Table 12. Number and weight in the rod catch in Norðurlandi vestra 2009. Total catch, catch landed, mean weight, grilse/salmon ratio of Atlantic salmon, brown trout, and Arctic charr (MW = mean weight (kg)).

River	Salmon					Grilse (ISW)					Salmon (2SW)					Brown trout					Arctic charr							
	Catch	Released	Catch landed	Weight landed	MW	Catch	Landed	Released	%	MW	Catch	Landed	Released	%	MW	Catch	Landed	Released	%	Weight Landed	MW	Catch	Landed	Released	%	Weight Landed	MW	
Hrútafjarðará og Siká	643	69	574	1494	2.7	599	549	50	8.3	2.5	44	25	19	43.2	5.1	0	0	0	0.0	0	0	66	63	3	4.5	75.6	1.2	
Tjarnará	93	0	93	211	2.3	89	89	0	0.0	2.2	4	4	0	0.0	4.6	0	0	0	0.0	0	0.0	24	24	0	0.0	12	0.5	
Hamarsá	25	3	22	53	2.5	22	20	2	9.1	2.2	3	2	1	33.3	4.7	0	0	0	0.0	0	0.0	55	55	0	0.0	22	0.4	
Miðfjarðará	3962	2843	1119	2840	2.8	3569	1074	2495	69.9	2.5	393	45	348	88.5	5.3	42	41	1	2.4	49	1.2	299	295	4	1.3	295	1.0	
Amarv.-Stóra og Austurá																597	474	123	20.6	521	1.1	947	893	54	5.7	714	0.8	
Viðdalsá og Fitjá	1999	643	1356	3870	3.0	1703	1207	496	29.1	2.5	296	149	147	49.7	5.5	338	320	18	5.3	416	1.3	986	948	38	3.9	1043	1.1	
Vatnsdalsá	1520	1267	253	795	3.3	1081	195	886	82.0	2.5	439	58	381	86.8	5.4	2021	1971	50	2.5	1971	1.0	1340	253	1087	81.1	228	0.9	
Giljá %																												
Gljúfurá	131	9	122	431	3.6	83	77	6	7.2	2.7	48	45	3	6.3	5.1	15	10	5	33.3	4	0.4	4	4	0	0.0	4	1.0	
Laxá á Asum	1123	266	857	2087	2.5	1076	837	239	22.2	2.4	47	20	27	57.4	4.5	2	2	0	0.0	1	0.5	0	0	0	0.0	0	0.0	
Fremri Laxá á Asum	50	44	6	109	2.5	49	5	44	89.8	2.5	1	1	0	0.0	3.5	4009	3775	234	5.8	1888	0.5	4	4	0	0.0	2	0.6	
Blanda	2445	110	2335	6567	2.8	2073	1988	85	4.1	2.4	372	347	25	6.7	5.1	51	48	3	5.9	77	1.6	19	19	0	0.0	17	0.9	
Svartá	420	152	268	679	2.5	380	244	136	35.8	2.3	40	24	16	40.0	4.8	32	32	0	0.0	45	1.4	36	30	6	16.7	33	1.1	
Langavatn á Refas *																												
Seyðisá *																												
Blöndulón *																												
Laxá á Refasveit	340	7	333	926	2.8	277	276	1	0.4	2.4	63	57	6	9.5	4.6	5	5	0	0.0	4	0.7	0	0	0	0.0	0	0.0	
Hallá	179	18	161	402	2.6	172	155	17	9.9	2.4	7	6	1	14.3	5.2	23	17	6	26.1	14	0.8	3	2	1	0.0	2	1.1	
Laxá í Nesjum	24	4	20	53	2.7	22	20	2	9.1	2.5	2	0	2	100.0	4.5	0	0	0	0.0	0	0.0	0	0	0	0.0	0	0.0	
Fossá á Skaga	30	0	30	93	3.1	23	23	0	0.0	2.4	7	7	0	0.0	5.5	0	0	0	0.0	0	0.0	0	0	0	0.0	0	0.0	
Laxá á Skaga #																												
Svartá ofan Reykjafoss																77	5	72	93.5	5	1.0	0	0	0	0.0	0	0.0	
Húseyjarkvísl	281	274	7	31	4.4	94	4	90	95.7	3.0	187	3	184	98.4	5.1	650	239	411	63.2	311	1.3	10	7	3	30.0	4	0.6	
Sæmundará	157	14	143	403	2.8	137	127	10	7.3	2.4	20	16	4	20.0	5.7	122	119	3	2.5	190	1.6	123	120	3	2.4	96	0.8	
Norðará í Skagafirði																2	2	0	0.0	2	1.0	174	174	0	0.0	174	1.0	
Héraðsvötn *																												
Höfsá Vesturdal			0					0	0.0				0	0.0				0	0.0	0					0	0.0	0	
Hjaltadalsá og Kolka	42	0	42	121	2.9	37	37	3	7.0	2.6	5	5	0	0.0	5.3	0	0	0	0.0	0	0.0	0	0	0	0.0	0	0.0	
Höfsá, Unadalsá *																												
Grafará *																												
Hrollleiðsdalsá	10	0	10	19	1.9	9	9	0	0.0	1.7	1	1	0	0.0	4.0	371	367	4	1.1	257	0.7	196	179	17	8.7	125	0.7	
Flókadalsá og vötn	1	0	1	3	3.0	1	1	0	0.0	3.0	0	0	0	0.0	0.0	0	0	0	0.0	0	0.0	283	283	0	0.0	226	0.8	
Fljótá	465	392	73	237	3.1	347	51	296	85.3	2.5	118	22	96	81.4	5.0	0	0	0	0.0	0	0.0	1255	1054	201	16.0	843	0.8	
Norðurland vestra Total	13940	6115	7825	21424	2.7	11843	6988	4858	41.0		2097	837	1260	60.1		8357	7427	930	11.1	5754	0.8	5824	4407	1417	24.3	3917	0.89	

* no records

% Recorded with River Vatnsdalsá

Table 13. Number and weight in the rod catch in Norðurlandi eystra 2009. Total catch, catch landed, mean weight, grilse/salmon ratio of Atlantic salmon, brown trout, and Arctic charr (MW = mean weight (kg)).

River	Salmon						Grilse (1SW)						Salmon (2SW)						Brown trout						Arctic charr					
	Catch	Released	Catch landed	Weight landed	MW		Catch	Landed	Released	Released	MW		Catch	Landed	Released	Released	MW		Catch	Landed	Released	Released	Weight Landed	MW	Catch	Landed	Released	Released	Weight Landed	MW
Olafsfjarðará	0	0	0	0	0.0	0	0	0	0.0	0.0	0	0	0	0.0	0.0	0	0	0	0	0	0.0	0	0.0	919	778	141	15.3	560	0.7	
Svarfáðardalsá	2	0	2	6	3.0	2	2	0	0.0	3.0	0	0	0	0.0	0.0	119	88	31	26.1	79	0.9	1104	1028	76	6.9	771	0.8			
Borvaldsdalsá			0					0	0.0				0	0.0				0	0.0				0	0	0	0.0		0		
Hörgá	1	0	1	3	3.0	1	1	0	0.0	3.0	0	0	0	0.0	0	259	259	0	0.0	259	1.0	794	794	0	0.0	794	1.0			
Eyjafjarðará	4	0	4	10	2.4	4	4	0	0.0	2.4	0	0	0	0.0	0.0	268	254	14	5.2	305	1.2	672	441	231	34.4	529	1.2			
Fnjöská	417	58	359	1159	3.2	303	256	47	15.5	2.4	114	103	11	9.6	5.4	119	119	0	0.0	119	1.0	474	472	2	0.4	566	1.2			
Bakkaá í Fnjóskadal			0					0	0.0				0	0.0		9	8	1	11.1	10	1.2	44	43	1	2.3	56	1.3			
Austurá í Hvalvatnsf.																						19	19	0	0.0	27	1.4			
Djúpá	68	2	66	187	2.8	56	55	1	1.8	2.4	12	11	1	8.3	4.9	0	0	0	0.0	0	0.0	0	0	0	0.0	0	0.0			
Skjálfaðalfjót A-deild	551	1	550	1489	2.7	452	452	0	0.0	2.2	99	98	1	1.0	5.0	115	115	0	0.0	104	0.9	402	402	0	0.0	281	0.7			
Skjálfaðalfjót B-deild	145	5	140	523	3.6	97	97	0	0.0	2.9	48	43	5	10.4	5.1	65	65	0	0.0	0	0.0	0	0	0	0.0	0	0.0			
Laxá í Aðaldal	1078	954	124	509	4.5	568	76	492	86.6	2.8	510	48	462	90.6	6.3	1329	756	573	43.1	907	1.2	15	13	2	0.0	12	0.9			
Laxá í Þing o. Brúa																2013	1019	994	49.4	1325	1.3	1	1	0	0.0	1	1.0			
Arnarvatnsá og Helluvaðsá																467	114	353	75.6	125	1.1	1	1	0	0.0	1	1.0			
Kraka																19	0	19	100.0	0	1.5	2	0	2	0.0	0	1.5			
Gautlandalækur																20	18	2	10.0	16	0.9	27	23	4	14.8	16	0.7			
Reykjadalsá	76	66	10	30	2.8	60	7	53	88.3	2.3	16	3	13	81.3	5.5	1678	1395	283	16.9	1256	0.9	8	7	1	12.5	7	1.0			
Mýrarkvisl	69	3	66	176	2.6	68	65	3	4.4	2.6	1	1	0	0.0	3.5	14	14	0	0.0	17	1.2	0	0	0	0.0	0	0.0			
Litlaá	2	0	2	5	2.5	2	2	0	0.0	2.5	0	0	0	0.0	0.0	829	257	572	69.0	488	1.9	77	27	50	0.0	46	1.7			
Skjálflavatn *			0																											
Brunná			0						0.0					0	0.0		48	10	38	79.2	11	1.1	283	54	229	80.9	65	1.2		
Deildará	252	39	213	538	2.8	195	184	11	5.6	2.2	57	29	28	49.1	4.6	78	78	0	0.0	140	1.8	13	13	0	0.0	23	1.8			
Órmarsá	282	45	237	651	3.1	197	194	3	1.5	2.3	85	43	42	49.4	4.9	53	53	0	0.0	53	1.0	52	49	3	5.8	49	1.0			
Svalbarðsá	434	316	118	365	4.0	185	82	103	55.7	2.5	249	36	213	85.5	5.2	15	7	8	53.3	10	1.4	7	4	3	42.9	9	2.2			
Sandá	411	293	118	348	3.7	247	91	156	63.2	2.4	164	27	137	83.5	5.5	0	0	0	0.0	0	0.0	1	1	0	0.0	1	1.0			
Hafralónsá	501	323	178	401	3.4	307	157	150	48.9	2.1	194	21	173	89.2	5.7	1	1	0	0.0	1	0.5	19	16	3	15.8	22	1.4			
Kverká #																														
Hölkna	171	111	60	181	3.7	101	46	55	54.5	2.6	70	14	56	80.0	5.3	0	0	0	0.0	0	0.0	0	0	0	0.0	0	0.0			
Bakkaá (v.f. Sandvíkur) *																														
Lónsá og Sauðanesá	2	0	2	5	2.5	1	1	0	0.0	1.5	1	1	0	0.0	3.5	49	39	10	20.4	59	1.5	68	51	17	25.0	51	1.0			
Norðurland eystra Total	4466	2216	2250	6586	2.9	2846	1772	1074	37.7		1620	478	1142	70.5		7567	4669	2898	38.3	5282	1.1	5002	4237	765	15.3	3888	0.9			

* no records

River closed for fishery

Table 14. Number and weight in the rod catch in Austurland 2009. Total catch, catch landed, mean weight, grilse/salmon ratio of Atlantic salmon, brown trout, and Arctic charr (MW = mean weight (kg)).

River	Salmon					Grilse (1SW)					Salmon (2SW)					Brown trout					Arctic charr							
	Catch	Released	Catch landed	Weight landed	MW	Catch	Landed	Released	Released	MW	Catch	Landed	Released	Released	MW	Catch	Land	Released	Released	Weight Landed	MW	Catch	Landed	Released	Released	Weight Landed	MW	
Miðfjarða og Kverká	236	163	73	169	3.0	166	69	97	58	2.3	70	4	66	94	4.5	0	0	0	0	0	0.0	0	0	0	0	0	0	0.0
Gæsagilaá og Bakkaá	15	2	13	28	2.7	11	11	0	0.0	1.9	4	2	2	50	5.5	0	0	0	0	0	0.0	0	0	0	0	0.0	0	0.0
Hölkna í Bakkaf	20	17	3	9	3.0	12	3	9	75.0	2.8	8	0	8	100		0	0	0	0	0.0	0	0	0	0	0.0	0	0.0	
Selá í Vopnafirði	1990	1436	554	1527	3.0	1366	428	938	68.7	2.2	624	126	498	80	5.2	4	3	1	25.0	5	1.6	32	23	9	28.1	30	1.3	
Vesturdalsá	206	74	132	273	2.5	169	122	47	27.8	2.0	37	10	27	73	4.5	3	3	0	0.0	5	1.5	370	347	23	6.2	174	0.5	
Hofsá	1070	681	389	1068	3.2	681	302	379	55.7	2.2	389	87	302	78	5.1	86	80	6	7.0	88	1.1	385	359	26	6.8	287	0.8	
Sunnudalsá	71	56	15	22	2.2	65	15	50	76.9	1.6	6	0	6	100	6.0	1	1	0	0.0	1	1.0	0	0	0	0.0	0	0.0	
Fögruhliðará	62	31	31	59	2.3	56	30	26	46.4	2.0	6	1	5	83	5.0	39	32	7	17.9	29	0.9	100	14	86	86.0	10	0.7	
Vatnasv. Jökulsár á Dal	256	122	134	297	2.3	227	122	105	46.3	2.1	29	12	17	59	4.3	24	20	4	16.7	28	1.4	197	156	41	20.8	140	0.9	
Gilsá og Selfjót	100	0	100	258	2.6	83	83	0	0.0	2.1	17	17	0	0	4.8	167	166	1	0.6	183	1.1	178	177	1	0.6	177	1.0	
Eyvindará	0	0	0	0	0.0	0	0	0	0.0	0.0	0	0	0	0.0	14	14	0	0.0	11	0.8	85	80	5	5.9	56	0.7		
Kelduá *								0											0									
Fjarðará, Borgarf.-Eystr	44	0	44	105	2.4	41	41	0	0.0	2.2	3	3	0	0	5.4	6	6	0	0.0	5	0.9	81	81	0	0.0	65	0.8	
Fjarðará, Seyðisfirði	3	0	3	10	3.3	2	2	0	0.0	2.0	1	1	0	0	6.0	0	0	0	0.0	0	0.0	40	39	1	2.5	31	0.8	
Norðfjarðará	29	0	29	90	3.1	21	21	0	0.0	2.6	8	8	0	0	4.5	0	0	0	0.0	0	0.0	645	584	61	9.5	467	0.8	
Fjarðará, Loðmundarf.*								0											0									
Sléttuá í Reyðarfirði #																												
Dalsá í Fáskrúðsfirði	5	0	5	10	2.0	5	5	0	0.0	2.0	0	0	0	0.0	0	0	0	0.0	0	0.0	513	483	30	5.8	290	0.6		
Breiðdalsá	782	301	481	1264	3.0	562	392	170	30.2	2.1	220	89	131	60	5.3	282	219	63	22.3	153	0.7	354	247	107	30.2	222	0.9	
Selá í Alftafirði	120	25	95	213	2.3	110	88	22	20.0	2	10	7	3	30	2.0	10	10	0	0.0	11	1.1	6	6	0	0.0	5	0.8	
Geithellnaá *			0					0											0									
Hoffellsá *			0					0											0									
Laxá í Nesjum	273	67	206	614	3.2	208	172	36	17.3	2.5	65	34	31	48	5.4	60	57	3	0	63	1.1	2	2	0	0.0	1	0.3	
Austurland Total:	5282	2975	2307	6016.3	2.6	3785	1906	1879	49.6		1497	401	1096	854		696	611	85	12.2	581	1.0	2988	2598	390	13.1	1955	0.8	

* no records

Table 15. Number and weight in the rod catch in Sudurland 2009. Total catch, catch landed, mean weight, grilse/salmon ratio of Atlantic salmon, brown trout, and Arctic charr (MW = mean weight (kg)).

River	Salmon					Grilse (1SW)					Salmon (2SW)					Brown trout					Arctic charr							
	Catch	Released	Catch landed	Weight landed	MW	Catch	Landed	Released	% Released	MW	Catch	Landed	Released	% Released	MW	Catch	Landed	Released	% Released	Weight Landed	MW	Catch	Landed	Released	% Released	Weight Landed	MW	
Brunná *																												
Laxá, Brúará, Djúpa	2	0	2	6	3.0	2	2	0	0.0	2.7	0	0	0	0	0.0	136	135	1	0.7	284	2.1	25	24	1	4	22	0.9	
Eldvatn á Brunas. *			0										0					0										
Fossálar	0	0	0	0	0.0	0	0	0	0.0	0.0	0	0	0	0	0.0	108	73	35	32.4	153	2.1	12	12	0	0.0	8	0.7	
Vatnamót	16	2	14	45	3.1	12	11	1	8.3	2.5	4	3	1	25	5.3	931	556	375	40.3	1056	1.9	13	12	1	7.7	8	0.7	
Hólmasvæði *																												
Geirlandsá	139	2	137	341	2.5	129	127	2	1.6	2.3	10	10	0	0	4.1	211	176	35	16.6	440	2.5	32	32	0	0.0	29	0.9	
Skaftá *			0																									
Hörgsá á Síðu *																												
Fjaðrá *																												
Víkurflóð	0	0	0	0	0.0	0	0	0	0.0	0.0	0	0	0	0	0.0	115	96	19	16.5	77	0.8	23	22	1	4.3	22	1.0	
Hæðargarðsvatn *																												
Holtsá *																												
Tungulækur	169	59	110	165	2.9	141	102	39	27.7	2.6	28	8	20	71.4	4.7	496	205	291	58.7	410	2.0	11	5	6	54.5	8	1.5	
Grenlækur	6	0	6	11	1.8	6	6	0	0.0	1.8	0	0	0	0	0.0	623	470	153	24.6	846	1.8	48	31	17	35.4	47	1.5	
Steinsmýrarvötn	0	0	0	0	0.0	0	0	0	0.0	0.0	0	0	0	0	0.0	1162	975	187	0.0	975	1.0	52	46	6	11.5	55	1.2	
Eldvatn í Meðallandi	22	1	21	65	3.1	16	15	1	6.3	2.6	6	6	0	0	4.5	192	89	103	53.6	205	2.3	42	41	1	2.4	70	1.7	
Tungufljót	42	1	41	120	2.9	33	32	1	3.0	2.6	9	9	0	0	4.1	271	124	147	54.2	384	3.1	18	18	0	0.0	21.6	1.2	
Kúðafliót *																												
Skálm *																												
Vatnsá og Kerlingadalsá	286	188	98	234	2.6	250	95	155	62.0	2.4	36	3	33	91.7	4.6	110	57	53	48.2	68	1.2	5	4	1	0.0	4	1.1	
Heiðarvatn *																												
Skógaá	820	50	770	1983	2.6	756	712	44	5.8	2.5	64	58	6	9.4	4.5	27	26	1	3.7	23	0.9	138	136	2	1.4	245	1.8	
Markarfljót, Álur	6	0	6	16	2.6	5	5	0	0.0	2.4	1	1	0	0	3.7	15	14	1	6.7	29	2.1	2	2	0	0.0	5	2.5	
Afall, A-Landeyjum	107	2	105	274	2.6	101	99	2	2.0	4.0	6	6	0	0	4.0	24	24	0	0.0	34	1.4	6	6	0	0.0	5	0.9	
Ytri-Rangá og Hólsá	10749	342	10407	24876	2.4	10296	9977	319	3.1	2.3	453	430	23	5.1	4.6	127	121	6	4.7	206	1.7	23	22	1	4.3	31	1.4	
Eystri-Rangá	4237	102	4135	10347	2.4	3844	3756	88	2.3	2.3	393	379	14	3.6	4.6	90	85	5	5.6	136	1.6	22	21	1	0.0	40	1.9	
Þverá	158	13	145	363	2.6	138	128	10	7.2	2.3	20	17	3	15.0	4.1	78	73	5	6.4	73	1.0	1	1	0	0.0	1	1.0	
Hólsá Austurbakki &	243	0	243	623	2.6	219	219	0	0.0	2.3	24	24	0	0	4.6	81	81	0	0.0	146	1.8	4	4	0	0.0	4	1.1	
Hróarslækur	392	0	392	987	2.5	371	371	0	0.0	2.4	21	21	0	0	4.3	8	8	0	0.0	12	1.5	2	2	0	0.0	5	2.6	
Minnivallarlækur	0	0	0	0	0.0	0	0	0	0.0	0.0	0	0	0	0	0.0	372	49	323	86.8	54	1.1	3	0	3	0.0	0	0.0	
Galtalækur	0	0	0	0	0.0	0	0	0	0.0	0.0	0	0	0	0	0.0	38	14	24	63.2	18	1.3	0	0	0	0.0	0	0.0	

Table 15. (continued). Number and weight in the rod catch in Sudurland 2009. Total catch, catch landed, mean weight, grilse/salmon ratio of Atlantic salmon, brown trout, and Arctic charr (MW = mean weight (kg)).

River	Salmon					Grilse (1SW)					Salmon (2SW)					Brown trout					Arctic charr							
	Catch	Released	Catch landed	Weight landed	MW	Catch	Landed	Released	%	MW	Catch	Landed	Released	%	MW	Catch	Landed	Released	%	Weight Landed	MW	Catch	Landed	Released	%	Weight Landed	MW	
Kálfiá	192	62	130	328	2.6	167	115	52	31.1	2.3	25	15	10	40.0	4.6	21	21	0	0.0	29	1.4	5	3	2	40.0	4	1.3	
Fossá í Þjórsárdal	55	22	33	124	3.8	27	17	10	37.0	2.9	28	16	12	0	4.7	24	16	8	0.0	29	1.8	10	10	0	0.0	14	1.4	
Þverá í Þjórsárdal	17	1	16	36	2.9	14	14	0	0.0	2.0	3	2	1	0	5.7	2	2	0	0.0	1	0.6	0	0	0	0.0	0	0.0	
Kaldakvísl																54	0	54	100.0	0	0.0	248	3	245	98.8	8	2.5	
Kvísilaveitur																189	189	0	0.0	227	1.2	0	0	0	0.0	0	0.0	
Botnsvatn *																												
Fellsendavatn																173	147	26	15.0	221	1.5	0	0	0	0.0	0	0.0	
Þórisvatn																584	580	4	0.7	522	0.9	0	0	0	0.0	0	0.0	
Veðivötn																20548	20548	0	0.0	21581	1.1	9673	9673	0	0.0	4837	0.5	
Þjórsá	75	1	74	199	2.7	69	68	1	1.4	2.5	6	6	0	0	4.8	64	53	11	17.2	90	1.7	7	7	0	0.0	8	1.2	
Laugarvatn *																												
Hólaá *																												
Apá *																												
Apavatn *																												
Ólfusá	494		494	1346	2.7	443	443	0	0.0	2.5	51	51	0	0	4.8	331	331	0	0.0	364	1.1	2	2	0	0.0	2	0.9	
Hvítá	801	11	790	2327	2.9	656	647	9	1.4	2.5	145	143	2	1.4	4.9	299	66	233	77.9	99	1.5	10	0	10	100.0	0	1.7	
Brúará	74	4	70	189	2.7	64	62	2	3.1	2.4	10	8	2	20.0	4.6	169	9	160	94.7	9	1.0	905	70	835	92.3	65	0.9	
Litla-Laxá	15	15	0	0	0.0	15	0	0	0.0	2.1	0	0	0	0.0	0.0	0	0	0	0.0	0	0.0	0	0	0	0.0	0	0.0	
Stóra-Laxá	638	290	348	925	2.9	549	313	236	43.0	1.7	89	35	54	60.7	5.3	44	40	4	9.1	60	1.5	12	11	1	8.3	13	1.2	
Tungufljót Biskupstungum	1512	231	1281	3746	3.0	1204	1064	140	11.6	2.5	308	217	91	29.5	4.7	1	1	0	0.0	2	2.0	6	6	0	0.0	10	1.7	
Sog	760	56	704	2008	3.1	630	593	37	5.9	2.5	130	111	19	14.6	4.5	79	70	9	11.4	105	1.5	279	245	34	12.2	343	1.4	
Ásgarðslækur *																												
Varmá/Þorleifslækur	4	3	1	6	4.0	2	0	2	100.0	3.0	2	1	1	50.0	6.0	371	155	216	58.2	124	0.8	22	7	15	68.2	18	2.5	
Volí	11	0	11	30	2.7	8	8	0	0.0	2.4	3	3	0	0.0	3.7	379	349	30	7.9	419	1.2	27	25	2	7.4	28	1.1	
Baugstaðaós	35	2	33	89	2.9	28	27	1	3.6	2.6	7	6	1	14.3	4.3	499	382	117	23.4	688	1.8	0	0	0	0.0	0	0.0	
Úlfjótavatn																												
Þingvallavatn																16	16	0	0.0	27	1.7	187	179	8	0.0	125	0.7	
Hlíðarvatn																1	1	0	0.0	1	0.8	3663	3515	148	4.0	1758	0.5	
Sudurland Total	22077	1460	20617	51809	2.5	20195	19028	1167	5.8		1882	1589	293	15.6		29063	26427	2636	9.1	30227	1.1	15592	14197	1395	8.9	7862	0.6	

* no records

& Recorded with Eystri-Rangá

Table 17 Catch of brown trout in some Icelandic rivers 1987 - 2009. Migratory and stationary stocks are included.

Ríver	Y E A R																							Average catch	Max catch	Min catch
	1987	1988	1989	1990	1991	1992	1993	1994	1995	1996	1997	1998	1999	2000	2001	2002	2003	2004	2005	2006	2007	2008	2009			
Laxá í Leirársveit	157	1448	194	219	221	223	180	183	153	157	116	189	239	176	209	406	179	241	97	104	75	46	92	231	1448	46
Andakilsá	4	6	1	5	0	2	1	0	3	1	7	3	4	8	4	2	67	9	3	3	6	11	2	7	67	0
Hvítá í Borgarfirði	152	190	99	192	0	149	155	364	305	722	264	583	358	924	663	486	662	729	992	617	495	530	673	448	992	0
Grímsá og Tunguá	71	49	49	74	4	216	108	357	188	30	136	213	189	250	291	313	175	339	119	171	174	143	74	162	357	4
Þverá og Kjarrá	35	80	36	99	0	121	98	109	152	247	101	247	263	463	266	258	299	375	147	180	89	62	69	165	463	0
Álftá	29	46	57	108	184	191	156	220	251	261	298	332	324	443	338	179	238	309	269	189	211	103	141	212	443	29
Hítará	5	17	14	30	23	23	39	0	34	61	33	25	30	29	28	38	36	42	43	27	13	41	33	29	61	0
Hörðudalsá	7	0	5	8	0	0	0	0	0	0	0	0	0	0	0	0	0	0	0	0	0	0	0	1	8	0
Miðá og Tunguá	0	0	0	1	0	4	0	1	0	0	0	0	0	2	2	0	0	0	0	0	0	0	0	0	4	0
Haukadalsá neðri	0	0	1	0	0	4	0	0	0	0	0	0	0	0	1	1	0	0	1	0	0	0	0	0	4	0
Haukadalsá efri	0	0	0	3	1	0	1	0	0	14	0	2	0	7	1	0	5	1	0	0	5	0	1	2	14	0
Staðarhólsá og Hvolsá	3	2	3	2	6	3	1	2	1	2	4	2	2	2	3	1	3	28	0	0	2	0	2	3	28	0
Fjarðarhornsa	0	2	1	0	0	0	0	0	0	0	0	0	0	0	0	0	0	0	1	3	6	1	1	1	6	0
Selá í Steingrímsfirði	0	0	0	0	0	0	0	0	0	0	0	0	0	0	0	0	0	1	0	0	0	0	0	0	1	0
Staðará í Steingrímsfirði	0	0	0	0	1	0	0	0	0	0	0	0	0	14	0	0	0	0	0	0	0	1	1	14	0	0
Hrútafjarðará og Siká	1	1	0	2	7	1	0	0	2	1	2	0	1	0	1	2	4	0	2	5	2	2	0	2	7	0
Miðfjarðará	20	16	7	58	41	6	10	7	9	3	2	2	15	6	9	6	22	37	12	26	41	50	42	19	58	2
Viðidalsá og Fitjá	0	3	26	13	41	34	23	14	16	42	52	316	80	151	143	198	60	307	364	166	291	27	597	129	597	0
Vatnsdalsá	366	685	245	667	571	506	335	388	450	318	300	617	520	695	807	670	729	729	684	1567	1509	1863	2021	750	2021	245
Fremri Laxá á Ásum	1069	2352	338	2965	4121	3911	2709	2744	2011	1301	2379	2567	2496	2980	3278	3666	3646	4602	3884	5279	4549	5456	4009	3144	5456	338
Húseyjarkvisl	60	7	12	426	476	483	369	540	373	349	407	373	349	397	277	559	587	427	330	397	597	644	650	395	650	7
Hrollleifsdalsá	0	13	7	34	102	59	53	113	32	126	86	73	81	87	75	173	137	326	170	181	371	109	371	109	371	0
Flókadalsá	87	27	93	111	109	54	82	0	81	29	36	169	244	263	249	419	401	398	311	181	237	0	163	419	0	
Fljótaá	0	3	0	10	0	0	0	0	0	1	0	0	0	0	0	1	0	1	0	0	1	0	0	1	10	0
Svarfaðardalsá	0	0	0	24	44	23	40	18	44	26	39	30	52	156	111	80	61	123	65	42	119	61	156	18	18	0
Hörgá	0	0	0	23	79	25	24	38	11	46	43	26	36	39	31	8	43	93	49	25	95	138	259	57	259	8
Eyjafjarðará	34	49	26	67	165	86	100	153	130	146	138	142	169	241	202	352	418	483	389	232	116	90	268	182	483	26
Fnjóská	20	8	14	14	31	25	12	45	27	31	53	25	44	22	28	40	73	79	111	49	42	63	119	42	119	8
Skjálafandaflljót	591	99	150	119	79	88	44	53	6	18	25	89	69	17	70	55	35	68	50	69	171	119	180	98	591	6
Laxá í Aðaldal	835	894	1079	1275	1465	1286	1307	705	900	594	929	1068	1232	1647	1796	1542	905	1386	1513	1149	1125	271	1329	1141	1796	271
Laxá ofan Brúa	0	3158	4861	4247	2792	2613	2316	1942	2281	2478	3700	7947	6313	6522	5863	4526	5091	6293	7915	7714	6909	4547	2013	4437	7947	0
Litlaá	0	710	610	422	784	684	730	583	464	416	269	427	466	512	1662	922	1022	1014	626	393	619	587	829	671	1662	269
Ormarsá	35	50	21	20	31	28	15	42	9	33	17	11	18	35	44	42	97	92	82	56	79	80	53	43	97	9
Selá í Vopnaf.	3	8	10	14	9	2	4	2	8	9	6	5	14	8	5	9	7	18	3	4	4	5	4	7	18	2
Vesturdalsá	3	1	9	5	4	4	0	6	1	1	0	0	19	2	0	0	0	0	0	2	0	2	3	3	19	0
Hofsá og Sunnudalsá	11	8	53	31	50	43	54	22	24	30	49	32	29	39	27	34	58	133	113	75	130	109	87	54	133	8
Gilsá og Selfljót	33	12	15	72	70	53	39	20	27	45	77	67	34	88	54	65	93	92	240	133	215	174	167	82	240	12
Breiðdalsá	197	31	15	148	169	245	117	307	242	306	375	214	146	143	315	285	517	549	657	517	309	306	282	278	657	15
Geirlandsá	362	303	356	193	88	109	108	118	251	235	389	274	151	237	159	193	140	404	231	187	205	357	211	229	404	88
Skaflá	977	715	725	221	436	366	464	612	388	813	969	407	456	550	836	1305	1152	1093	1038	1171	689	807	1039	749	1305	221
Eldvatn í Meðallandi	84	170	92	35	27	38	112	129	171	192	161	215	57	53	58	78	76	151	168	172	168	245	192	124	245	27
Grenlækur	0	700	894	1425	1648	2640	2338	3311	3638	2730	2493	1679	1293	1264	864	1331	1189	1700	1429	940	828	678	623	1620	3638	623
Tunguflljót	62	67	148	84	134	134	249	156	174	239	384	224	273	286	286	347	345	529	380	324	414	276	271	252	529	62
Heiðarvatn	0	0	215	399	301	373	284	255	116	102	212	269	277	326	609	378	410	0	0	0	0	0	0	302	609	102
Rangár og Fiská	0	0	179	163	527	359	337	230	393	635	468	477	494	547	216	772	934	594	398	470	80	306	429	934	80	
Ölfusá	0	60	29	44	70	52	58	366	53	103	161	513	399	301	911	741	1006	227	797	246	71	98	331	302	1006	29
Sog	2	6	8	6	10	7	6	11	15	29	23	37	40	28	27	43	22	34	104	63	55	66	31	29	104	2
Hróarholtslækur	403	550	465	322	391	449	301	580	374	326	492	1011	680	765	931	949	924	920	1266	914	980	833	878	683	1266	301

Table 18. Catch of Arctic charr in some Icelandic rivers 1987 - 2009. Migratory and stationary stocks are included.

River	Y E A R																					Avarage catch	Max catch	Min catch		
	1987	1988	1989	1990	1991	1992	1993	1994	1995	1996	1997	1998	1999	2000	2001	2002	2003	2004	2005	2006	2007				2008	2009
Laxá í Leirársveit	0	7	7	1	4	6	18	14	21	4	35	62	42	43	124	48	24	30	5	7	8	6	12	23	124	0
Andakilsá	10	231	284	479	3	341	0	3	218	189	238	116	84	131	294	194	203	282	147	49	28	21	47	156	479	0
Hvítá í Borgarfirði	27	9	15	19	613	88	106	14	12	4	4	78	11	2	886	653	601	664	342	312	26	253	287	219	886	2
Grímsá og Tunguá	1	2	2	24	250	12	3	6	1	1	0	4	4	1	7	4	1	2	1	1	6	1	4	15	250	0
Þverá og Kjarrá	3	9	111	76	113	14	35	25	9	7	63	2	5	8	19	13	15	10	3	5	1	2	0	24	113	0
Álftá	0	1	2	1	4	6	10	9	2	3	6	6	0	7	0	4	2	3	0	5	0	0	0	3	10	0
Hítará	193	134	132	234	518	396	184	0	259	131	426	7	344	146	136	129	126	80	57	23	58	34	47	165	518	0
Hörðudalsá	18	291	231	614	451	340		271	423	361	1021	1003	453		907		81	80	11		223	39	379	1021	11	
Miðá og Tunguá		73	70	470	478	650	530	411	674	350	396	825	925	591	1009	593	273	432	184	120	328	350	125	448	1009	70
Haukadalsá neðri	679	7	21	8	74	8	57	111	71	8	36	12	58	42	22	19	50	30	21	20	17	2	8	60	679	2
Haukadalsá efri		22	14	237	919	149	267		590	739	593	892	949	731	93	644	453	276	278	135	240	367	64	412	949	14
Staðarhólsá og Hvolsá	401	224	338	941	882	397	616	733	934	1490	1316	1469	1016	949	583	439	487	1000	375	323	549	283	379	701	1490	224
Fjarðarhornsá	20	107	306	562	536	233	73	80	135	165			47		93	129	116	179	100	273	184	185	53	179	562	20
Selá í Steingrímsfirði	261	12		229	334	259	77	404	145	356		171	246	529	0	90	68	640	217	81	81	195		220	640	0
Staðará í Steingrímsfirði	584	35	13	183	385	265	254	163	201	92	164	288	76	297	275									218	584	13
Hrútafjarðará og Síká	269	59	68	221	532	192	135	129	221	499	363	564	346	610	358	221	303	180	158	159	100	213	66	259	610	59
Miðfjarðará	236	167	89	221	273	152	97	123	144	47	267	304	277	97	316	148	225	235	180	216	61	256	299	193	316	47
Viðaldalsá og Fitjá	1325	366	26	377	547	467	676	1214	3485	2782	1551	5568	3824	3138	1903	1143	2144	3004	1118	1460	1725	213	986	1697	5568	26
Vatnsdalsá	727	1182	270	1642	1851	1112	1427	1058	812	2498	1861	1438	2755	2712	1919	1975	1430	1186	779	724	1000	1478	1340	1442	2755	270
Fremri Laxá á Ásum	137	236	15	34	52	35	6	26	41	61	52	64	27	153	53	23	8	12	0	3	3	0	4	45	236	0
Húseyjarkvísl	7	2	8	64	28	17	32	44	48	45	30	46	17	8	18	14	27	12	6	27	14	25	10	24	64	2
Hrollleifsdalsá		47	45	221	401	410	381	628		218	198	377	325	311	281	397	409	346	261	166	152	159	196	282	628	45
Flókadalsá	110	1028	280	2134	2198	1144	1040	1673	489	265	1135	655	2405	775	1539	1169	2279	2473	1084	499	380	528	283	1112	2473	110
Fljótaá		1	44	627	643	881	1242	7071	6928	6931	1648	893	792	944	298	164	288	508	215	357	208	438	1255	1472	7071	1
Svarfaðardalsá				873		1049	668	1691	358	417	475	526	704	560	842	378	310	407	311	567		400	1058	644	1691	310
Hörgá				1692	1394	1238	1783	1590	1063	1245	1293	1229	856	1216	1373	1110	935	964	896	670	860	843	794	1152	1783	670
Eyjafjarðará	1557	1467	127	2123	2836	3095	3080	3319	2151	2098	3625	3137	2900	2620	2931	1954	1678	2052	1516	916	610	723	672	2052	3625	127
Fnjóská	496	217	238	390	469	239	251	550	391	339	409	579	700	612	695	370	736	545	355	781	598	850	474	491	850	217
Skjálfandafjót	275	338	561	391	331	160	173	198	151	214	506	403	658	1034	356	357	338	239	116	218	292	397	402	353	1034	116
Laxá í Aðaldal	35	187	114	137	86	48	114	57	52	29	64	52	48	115	121	91	37	27	22	8	25	2	15	65	187	2
Laxá ofan Brúa	0	19	63	16	10	3	5	1	3	7	42	412	145	41	5	4	8	16	21	16	7	2	1	37	412	0
Litlaá		297	307	310	368	551	259	220	193	131	104	97	123	117	388	199	249	97	110	31	67	128	77	201	551	31
Ormarsá	245	114	141	181	175	127	131	126	103	101	68	93	129	128	56	62	53	30	109	60	69	54	52	105	245	30
Selá í Vopnaf.	249	56	52	211	105	103	51	106	84	164	115	37	55	72	53	49	63	60	50	18	33	12	32	80	249	12
Vesturdalsá	506	51	78	513	1402	726	321	383	474	872	1080	457	815	864	1079	502	1002	557	342	223	241	417	370	577	1402	51
Hofsá og Sunnudalsá	357	32	143	67	357	471	268	261	183	344	250	246	557	744	30	207	276	559	247	154	247	152	385	284	744	30
Gilsá og Selfjót	230	61	71	455	382	368	242	381	261	532	421	221	340	375	469	426	447	491	429	347	310	304	178	337	532	61
Breiðdalsá	453	74	70	600	22	23	410	369	977	396	197	235	415	601	1121	567	628	881	1193	405	263	412	354	464	1193	22
Geirlandsá	60	69	48	29	50	43	40	39	48	43	28	26	27	54	44	50	44	38	21	8	3	29	32	38	69	3
Skaftá	17	19	12	1	5	7	19	28	13	21	16	19	27	42	25	33	14	13	5	25	12	25	25	18	42	1
Eldvatn í Meðallandi	21	22	3	21	3	27	19	6	60	114	61	29	27	16	50	48	39	61	19	67	24	56	42	36	114	3
Grenlækur		78	12	151	247	177	288	273	403	290	294	223	114	128	212	283	209	267	252	145	84	99	48	194	403	12
Tungulfjót	63	37	28	107	65	46	43	85	67	60	53	52	52	40	66	130	62	79	74	23	6	6	18	55	130	6
Heiðarvatn			106	203	213	319	159	296	131	89	498	616	385	331	1021	188	433							333	1021	89
Rangár og Fiská				75	65	106	90	83	94	165	150	72	54	95	88	75	89	50	40	20	15	16	54	75	165	15
Ölfusá			8	7	12	17	12	10	72	40	20	30	21	11	16	26	26	21	16	7	6	4	2	18	72	2
Sog	255	312	227	426	558	173	130	209	316	914	754	860	455	451	765	752	529	508	449	102	177	198	149	420	914	102
Hróarholtslækur	13	134	110	144	84	172	92	136	169	360	80	113	96	55	52	84	38	65	21	13	4	12	27	90	360	4

Table 19. Catch, by region in netfisheries in 2009 in numer and weight (kg).

Area Area/River	Salmon		Brown trout		Arctic charr	
	number	weight	number	weight	number	weight
Reykjanes	0	0	0	0	0	0
Reykjanes Total	0	0	0	0	0	0
Borgarfjörður net catch, Estuary	0	0	14	7	52	32
Hvítá Borg. lower part	63	153	199	172	112	80
Hvítá upper and Norðurlingfl.	187	407	23	156	23	17
Vesturland Total	250	560	236	335	187	129
Vestfirðir Total	0	0	0	0	0	0
Arnarvatn-Stóra	0	0	684	684	120	120
Héraðsvötn	21	53	123	124	751	541
Miklavatn í Fljótum	4	12	5	9	1431	750
Norðurland vestra Total	25	65	812	817	2302	1411
Skjálfandaflljót	29	105	0	0	389	389
Vestmannsvatn	0	0	0	0	0	0
Mývatn	0	0	1933	1933	5348	4011
Norðurland eystra Total	29	105	1933	0	5737	4400
Lagarfljót	78	198	0	0	0	0
Austurland Total	78	198	0	0	0	0
Skaftá	47	115	200	363	4	8
Kúðaflljót	108	345	134	494	0	0
Mjóásvatn (Álftaveri) *						
Markarfljót *						
Veiðivötn			3637	5289	2211	1108
Kvíslaveitur			41	41		
Þjórsá	5034	14571	451	908	4	7
Laugarvatn *						
Apavatn	1	3	6147	3039	17492	5453
Villingavatnsá					11	16
Hvítá í Arnessýslu	2375	6788	196	479	67	84
Ölfusá	1660	4573	560	670	11	18
Suðurland Total	9225	26395	11366	11283	19800	6694
All areas Total	9607	27323	14347	12435	28026	12634