

DJÚPKARFI – DEMERSAL BEAKED REDFISH

Sebastes mentella

RÁÐGJÖF – ADVICE

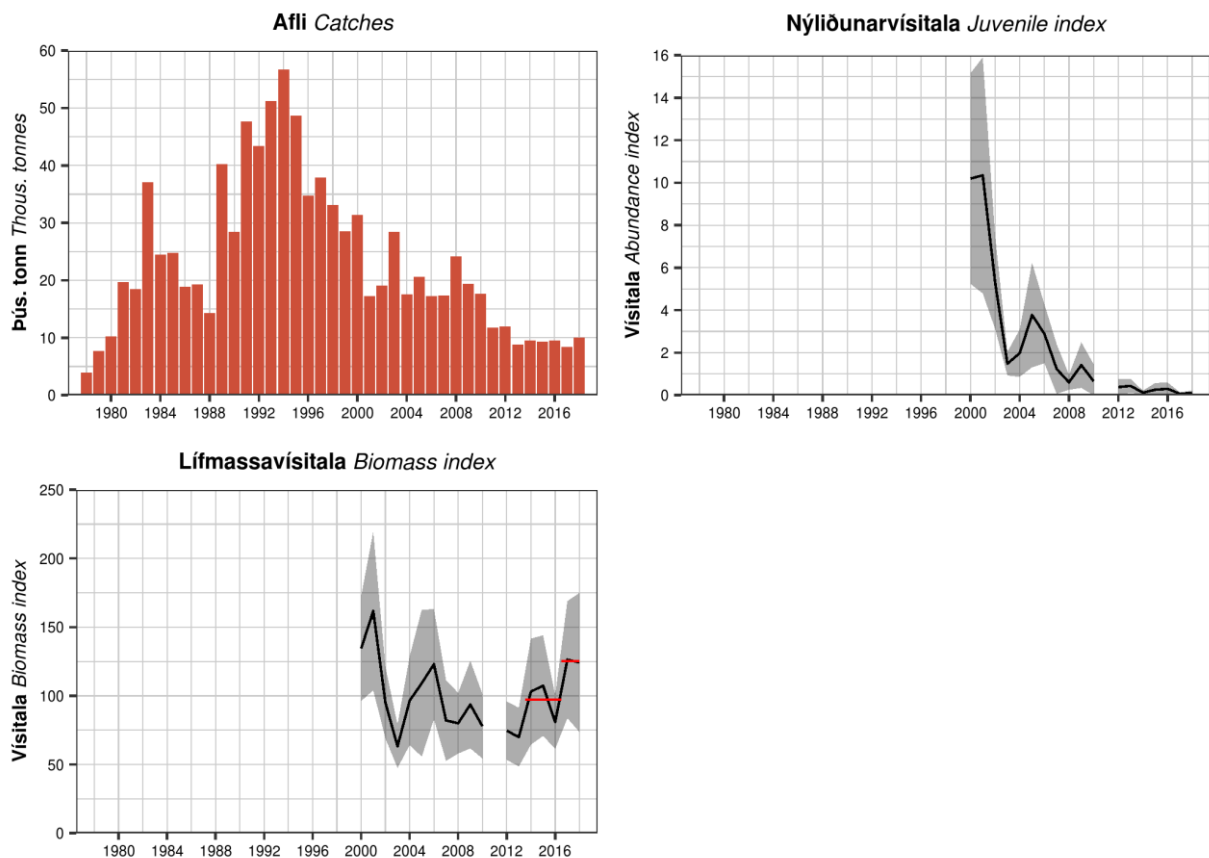
Hafrannsóknastofnun og Alþjóðahafrannsóknaráðið leggja til, í samræmi við varúðarsjónarmið, að afli fiskveiði-árið 2019/2020 verði ekki meiri en 12 492 tonn.

MFRI and ICES advise that when the precautionary approach is applied, catches in the fishing year 2019/2020 should be no more than 12 492 tonnes.

STOFNÞRÓUN – STOCK DEVELOPMENT

Heildarvísitala djúpkarfa í SMH hefur hækkað frá árinu 2014. Nýliðunarvísitala (≤ 30 cm) í SMH hefur verið mjög lág síðan 2007.

The IS-SMH biomass index shows an increasing trend after 2013. Since 2007, survey estimates have consistently shown very low estimates for juveniles (≤ 30 cm).



Djúpkarfi. Afli, nýliðunarvísitala (≤ 30 cm) og lífmassavísitala úr SMH. Grá svæði sýna 95% öryggismörk. Rauðar láréttar línur sýna meðallífmassavísitölur fyrir árin 2014–2016 og 2017–2018 sem eru notaðar við útreikninga ráðgjafar.

Demersal beaked redfish. Catches, and IS-SMH juvenile (≤ 30 cm) and biomass indices. Grey areas represent 95% CI. Red horizontal lines indicate average biomass indices for 2014–2016 and for 2017–2018 used in the advice calculations.

AÐRAR UPPLÝSINGAR – OTHER INFORMATION

Landgrunnið við Austur Grænland er talið vera uppvaxtarsvæði djúpkarfa í landgrunnshlíðum Íslands. Óvíst er hve stór hluti karfa frá þessu svæði skilar sér í veiðistofn djúpkarfa við Ísland. Í stofnmælingum Þjóðverja á landgrunninu við Austur Grænland mældist á árunum 2003–2005 mikið af smáum djúpkarfa (20–30 cm). Á árunum 2006–2010 fækkaði honum, en 30 cm og stærrri fjölgaði. Síðan þá hefur lítið mælst af smáum djúpkarfa og hefur ekki mælst minna af honum frá upphafi mælinga árið 1982.

The East Greenland shelf is most likely a common nursery area for demersal beaked redfish in Icelandic waters and the East Greenland shelf. Abundance indices from the German annual groundfish survey, conducted on the continental shelf and slope of West and East Greenland down to 400 m, show that small beaked redfish (20–30 cm) was abundant 2003–2005. The 2006–2010 survey results indicated low abundance of this size class, but higher for fish 30 cm and larger. Since 2008, the survey index for juveniles has been low and was in 2013–2017 the lowest since 1982.

RÁÐGJÖF, AFLAMARK OG AFLI – ADVICE, TAC AND CATCH

Djúpkarfi. Tillögur um hámarksafli, ákvörðun stjórnvalda um aflamark og afli (tonn).

Demersal beaked redfish. Recommended TAC, national TAC, and catches (tonnes).

Fiskveiðiár Fishing year	Tillaga Recommended TAC	Aflamark National TAC	Afli Catches
2010/11	10 000	12 500	12 085
2011/12	10 000	12 000	12 321
2012/13	10 000	10 000	10 396
2013/14	10 000	10 000	9 753
2014/15	10 000	10 000	9 037
2015/16	10 000	10 000	9 599
2016/17	12 922	12 922	8 556
2017/18	11 786	11 786	10 540
2018/19	13 012	13 012	
2019/20	12 492		

HEIMILDIR OG ÍTAREFNI – REFERENCES AND FURTHER READING

ICES. 2012. Implementation of Advice for Data-limited Stocks in 2012 in its 2012 Advice. ICES CM 2012/ACOM 68.

<http://www.ices.dk/sites/pub/Publication%20Reports/Expert%20Group%20Report/acom/2012/ADHOC/DLS%20Guidance%20Report%20012.pdf>

ICES. 2019. North Western Working Group (NWWG). ICES Scientific Reports. 1:14. XXXX pp. <http://doi.org/10.17895/ices.pub.5298>

MFRI Assessment Reports 2019. Demersal beaked redfish. Marine and Freshwater Research Institute, 13 June 2019.